

## Excellent Integrated System Limited

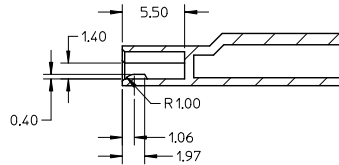
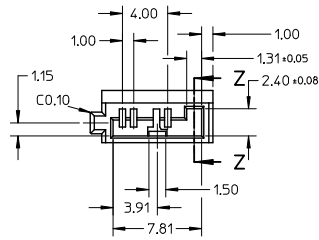
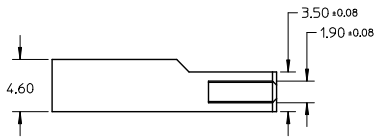
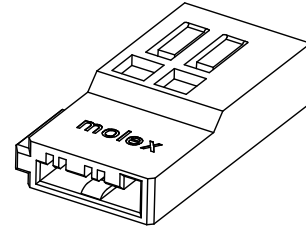
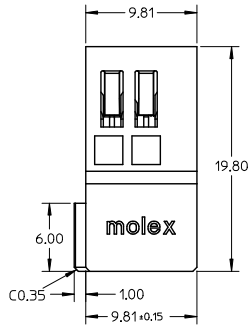
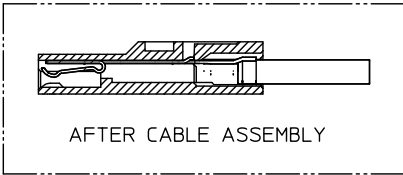
Stocking Distributor

Click to view price, real time Inventory, Delivery & Lifecycle Information:

[Molex Connector Corporation](#)  
[0476342000](#)

For any questions, you can email us directly:  
[sales@integrated-circuit.com](mailto:sales@integrated-circuit.com)

10 9 8 7 6 5 4 3 2 1



SECTION Z-Z

- NOTES:
1. MATERIAL: THERMALPLASTIC, UL94V-0, COLOR: BLACK
  2. TO BE USED WITH 47634-100\*, 2 SETS TERMINAL PER HOUSING
  3. PRODUCT SPECIFICATION REFER TO PS-47634-001
  4. PACKAGE SPECIFICATION REFER TO PK-47634-002

NEW RELEASE EC NO.: SH2009-0049 DRAWN: XZHWANG CHECKED: JSONG APPR: HWANG	QUALITY SYMBOLS ▽=0 ▽=0	GENERAL TOLERANCES (UNLESS SPECIFIED) 4 PLACES ± --- ± --- 3 PLACES ± --- ± --- 2 PLACES ± 0.25 ± --- 1 PLACE ± 0.25 ± --- ANGULAR ± 3°	DIMENSION STYLE MM ONLY	SCALE 4:1	DESIGN UNITS METRIC	THIRD ANGLE PROJECTION
	DRAWN BY HZHAO	DATE 2007/10/10	TITLE HSG FOR SATA POWER CABLE RECEPTACLE	MOLEX INCORPORATED		
	CHECKED BY JTIAN	DATE 2007/10/10	APPROVED BY HWANG			
	MATERIAL NO. 476342000	DOCUMENT NO. SD-47634-002	DRAFT WHERE APPLICABLE MUST REMAIN WITHIN DIMENSIONS	SIZE A3	THIS DRAWING CONTAINS INFORMATION THAT IS PROPRIETARY TO MOLEX INCORPORATED AND SHOULD NOT BE USED WITHOUT WRITTEN PERMISSION	SHEET NO. 1 OF 1

9 8 7 6 5 4 3 2 1