

Excellent Integrated System Limited

Stocking Distributor

Click to view price, real time Inventory, Delivery & Lifecycle Information:

[Molex Connector Corporation](#)
[0638138400](#)

For any questions, you can email us directly:
sales@integrated-circuit.com

This document was generated on 04/07/2016

PLEASE CHECK WWW.MOLEX.COM FOR LATEST PART INFORMATION

Part Number: [0638138400](#)
Status: **Active**
Description: Extractor Tool for MOX, 0.63mm Receptacle Crimp Terminals

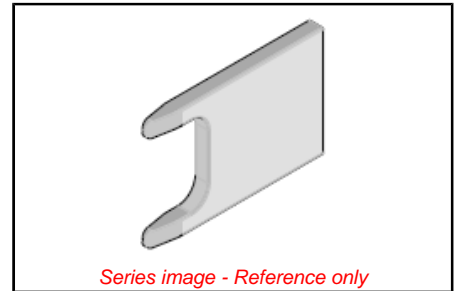
Documents:
[RoHS Certificate of Compliance \(PDF\)](#)

General	
Product Family	Application Tooling
Series	T9999
Function	Extraction
Geographic Area	Global
Level of Automation	Manual
More Detailed Tech Information	applicationtooling@molex.com
Product Name	N/A
Survey	www.molex.com/review/apptool_survey.html
Tool Type	Handtool
UPC	884982141339
Warranty Disclaimer	CAUTION: Molex tooling crimp specifications are valid only when used with Molex terminals and tooling manufactured by Molex and sold by Molex or authorized distributors ("Molex Tooling"). When using tooling other than Molex Tooling with Molex specific connector systems listed in our ATS documents, the Molex tooling qualification does not apply and the responsibility for full qualification of the connector system is that of the customer. Molex accepts no liability for connector performance or tooling support where tooling other than Molex Tooling is used or where Molex Tooling is modified.

Physical	
Net Weight	0.010/mg

Material Info

Reference - Drawing Numbers	
Application Tooling Documents	ATS-638138400



EU ELV Not Reviewed	China RoHS
EU RoHS Not Reviewed	
REACH SVHC Not Reviewed	
Halogen-Free Status Not Reviewed	
Need more information on product environmental compliance?	
Email productcompliance@molex.com Please visit the Contact Us section for any non-product compliance questions.	
China ROHS ELV	Not Reviewed Not Reviewed

Search Parts in this Series T9999 Series
Use With 98982 2.54mm Pitch MOX Receptacle Kit, 4 Rows, 40 Circuits

This document was generated on 04/07/2016

PLEASE CHECK WWW.MOLEX.COM FOR LATEST PART INFORMATION