

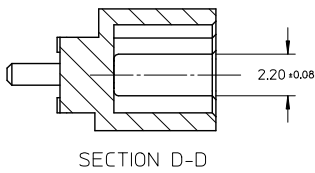
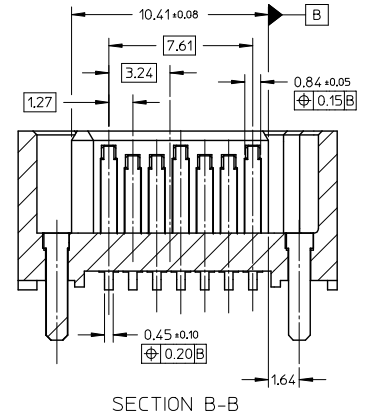
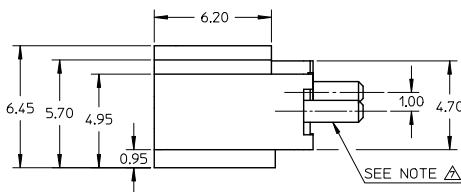
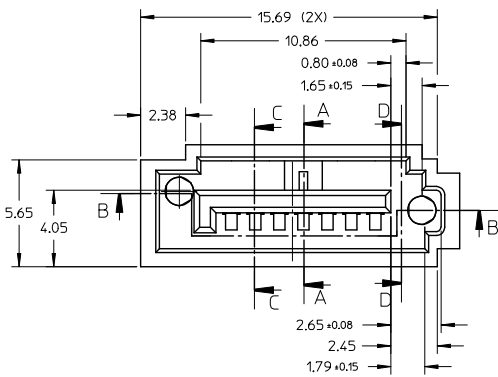
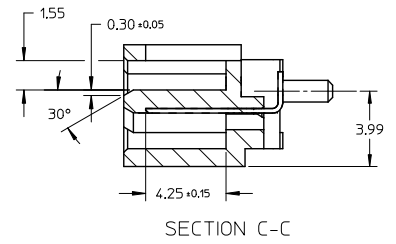
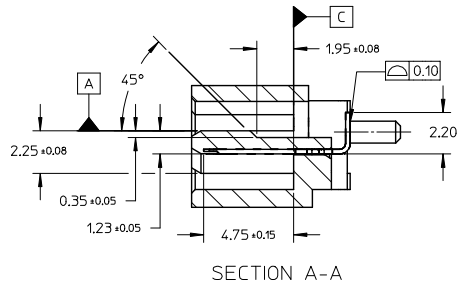
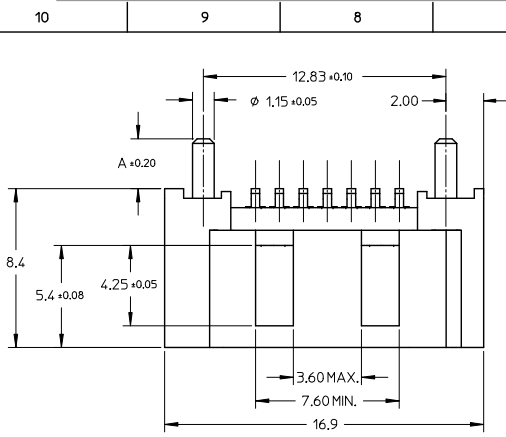
## Excellent Integrated System Limited

Stocking Distributor

Click to view price, real time Inventory, Delivery & Lifecycle Information:

[Molex Connector Corporation](#)  
[0678005022](#)

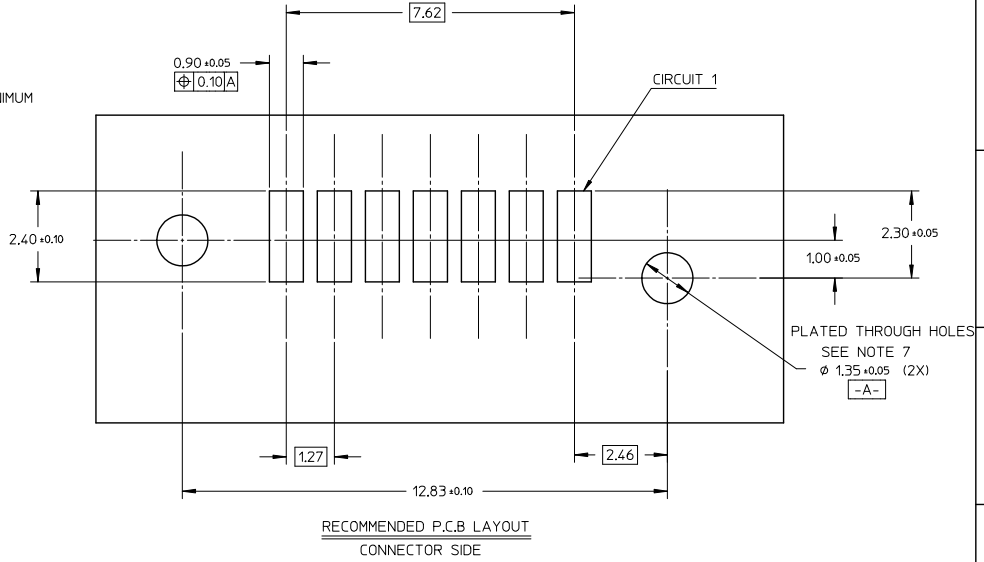
For any questions, you can email us directly:  
[sales@integrated-circuit.com](mailto:sales@integrated-circuit.com)



ADD PARTS EC NO: SH2014-0204 DRAWN BY: GRATE MA CHKD: YAJUN APPR: YAJUN REV: G	DESCRIPTION 2013/11/20 2014/01/20	QUALITY SYMBOLS	GENERAL TOLERANCES (UNLESS SPECIFIED)		DIMENSION STYLE MM ONLY		SCALE 5:1	DESIGN UNITS METRIC	THIRD ANGLE PROJECTION																																															
		<table border="1"> <tr><th></th><th>mm</th><th>INCH</th></tr> <tr><td>4 PLACES</td><td>± ---</td><td>± ---</td></tr> <tr><td>3 PLACES</td><td>± ---</td><td>± ---</td></tr> <tr><td>2 PLACES</td><td>± 0.15</td><td>± ---</td></tr> <tr><td>1 PLACE</td><td>± 0.25</td><td>± ---</td></tr> <tr><td>0 PLACE</td><td>±</td><td>±</td></tr> </table>		mm	INCH	4 PLACES	± ---	± ---	3 PLACES	± ---	± ---	2 PLACES	± 0.15	± ---	1 PLACE	± 0.25	± ---	0 PLACE	±	±	<table border="1"> <tr><th>mm</th><th>INCH</th></tr> <tr><td>± 0.10</td><td>± 0.004</td></tr> <tr><td>± 0.15</td><td>± 0.006</td></tr> <tr><td>± 0.25</td><td>± 0.010</td></tr> <tr><td>± 0.50</td><td>± 0.020</td></tr> <tr><td>± 1.00</td><td>± 0.040</td></tr> <tr><td>± 1.50</td><td>± 0.060</td></tr> <tr><td>± 2.00</td><td>± 0.080</td></tr> <tr><td>± 3.00</td><td>± 0.120</td></tr> <tr><td>± 4.00</td><td>± 0.160</td></tr> <tr><td>± 5.00</td><td>± 0.200</td></tr> <tr><td>± 6.00</td><td>± 0.240</td></tr> <tr><td>± 8.00</td><td>± 0.320</td></tr> <tr><td>± 10.00</td><td>± 0.400</td></tr> <tr><td>± 15.00</td><td>± 0.600</td></tr> <tr><td>± 20.00</td><td>± 0.800</td></tr> </table>		mm	INCH	± 0.10	± 0.004	± 0.15	± 0.006	± 0.25	± 0.010	± 0.50	± 0.020	± 1.00	± 0.040	± 1.50	± 0.060	± 2.00	± 0.080	± 3.00	± 0.120	± 4.00	± 0.160	± 5.00	± 0.200	± 6.00	± 0.240	± 8.00	± 0.320	± 10.00	± 0.400	± 15.00	± 0.600	± 20.00	± 0.800	DRAWN BY GRATE MA	DATE 2004/02/02
	mm	INCH																																																						
4 PLACES	± ---	± ---																																																						
3 PLACES	± ---	± ---																																																						
2 PLACES	± 0.15	± ---																																																						
1 PLACE	± 0.25	± ---																																																						
0 PLACE	±	±																																																						
mm	INCH																																																							
± 0.10	± 0.004																																																							
± 0.15	± 0.006																																																							
± 0.25	± 0.010																																																							
± 0.50	± 0.020																																																							
± 1.00	± 0.040																																																							
± 1.50	± 0.060																																																							
± 2.00	± 0.080																																																							
± 3.00	± 0.120																																																							
± 4.00	± 0.160																																																							
± 5.00	± 0.200																																																							
± 6.00	± 0.240																																																							
± 8.00	± 0.320																																																							
± 10.00	± 0.400																																																							
± 15.00	± 0.600																																																							
± 20.00	± 0.800																																																							
DRAFT WHERE APPLICABLE MUST REMAIN WITHIN DIMENSIONS		MATERIAL NO. SEE CHART IN SHEET 2		DOCUMENT NO. SD-67800-005		SHEET NO. 1 OF 2																																																		
THIS DRAWING CONTAINS INFORMATION THAT IS PROPRIETARY TO MOLEX INCORPORATED AND SHOULD NOT BE USED WITHOUT WRITTEN PERMISSION																																																								

10 9 8 7 6 5 4 3 2 1

- NOTES:
- MATERIAL:
    - HOUSING: HIGH TEMPERATURE THERMAL PLASTIC, GLASS FILLED, UL94V-0, COLOR: REFER TO CHART.
    - TERMINAL: BRASS
    - POST: BRASS
  - TERMINAL PLATING:
    - CONTACT AREA: (a) GOLD FLASH
      - (b) GOLD, THICKNESS=0.76 MICRON MINIMUM
      - (c) GOLD, THICKNESS=0.38 MICRON MINIMUM
    - SOLDER TAIL: TIN, THICKNESS=1.27 MICRON MINIMUM
    - UNDER PLATE: NICKEL PLATED, THICKNESS=1.27 MICRON MINIMUM
  - POST PLATING: UNDER PLATE: NICKEL, THICKNESS=1.25 MICRON MINIMUM  
TIN, THICKNESS=19 MICRON MINIMUM OVER ALL
  - PACKAGING: PK-67800-001
  - PRODUCT SPECIFICATION REFER TO PS-67491-001
  - RECOMMENDED SOLDERING PROCESS: IR PROCESS
- ⚠ METAL POSTS TO BE SOLDERED TO PCB



678005025	SEE NOTE2(c)	BLACK	3.45	PURE TIN
678005022	SEE NOTE2(b)			
678005021	SEE NOTE2(a)			
678005015	SEE NOTE2(c)	BLACK	3.05	
678005012	SEE NOTE2(b)			
678005011	SEE NOTE2(a)			
678005005	SEE NOTE2(c)	BLACK	2.65	
678005004	SEE NOTE2(c)	YELLOW		
678005003	SEE NOTE2(c)	BLUE		
678005013	SEE NOTE2(b)	WHITE(NATURE)		
678005002	SEE NOTE2(b)			
678005001	SEE NOTE2(a)	BLACK		
MATERIAL NO	PLATING TYPE	HOUSING COLOR	DIM A	REMARK

SEE SHEET 1 EC NO: SH2014-0204 DRAWING: G CHKD: JDRW:GGLI APPR: ATIN 2013/11/20 2014/01/20	QUALITY SYMBOLS √=0 ∇=0 ∇=0	GENERAL TOLERANCES (UNLESS SPECIFIED)		DIMENSION STYLE MM ONLY		SCALE 5:1	DESIGN UNITS METRIC	THIRD ANGLE PROJECTION		
		4 PLACES ± --- ± ---	3 PLACES ± --- ± ---	2 PLACES ± 0.15 ± ---	1 PLACE ± 0.25 ± ---	0 PLACE ± ±	DRAWN BY DATE GRATE MA 2004/02/02	TITLE HIGH SPEED CONNECTOR 1.27MM PITCH VERTICAL SMT SOLDER TAIL		
		ANGULAR ± 1 °					CHECKED BY DATE YAJUN 2004/02/02	molex		
		DRAFT WHERE APPLICABLE MUST REMAIN WITHIN DIMENSIONS					APPROVED BY DATE SAM 2004/02/02	MATERIAL NO. SEE CHART	DOCUMENT NO. SD-67800-005	SHEET NO. 2 OF 2

THIS DRAWING CONTAINS INFORMATION THAT IS PROPRIETARY TO MOLEX INCORPORATED AND SHOULD NOT BE USED WITHOUT WRITTEN PERMISSION

ib\_frame\_A3\_P\_AM\_T Rev. G 2012/01/11