

## Excellent Integrated System Limited

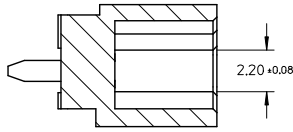
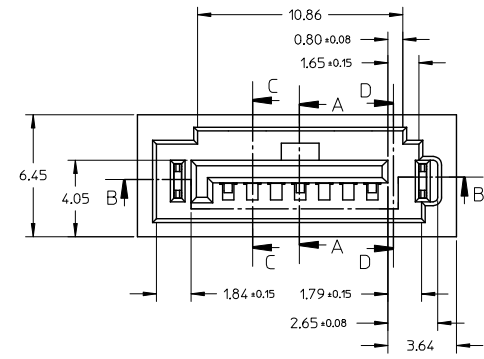
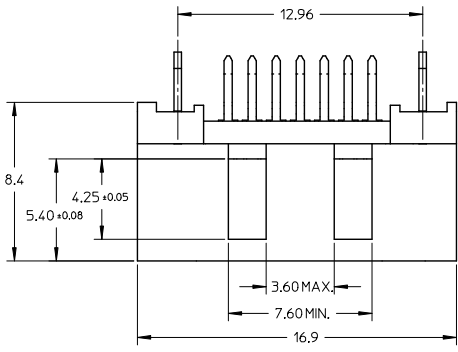
Stocking Distributor

Click to view price, real time Inventory, Delivery & Lifecycle Information:

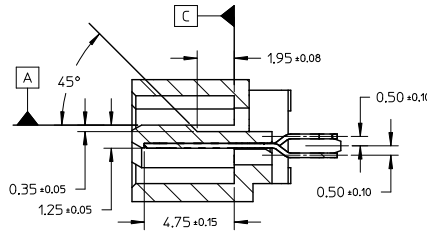
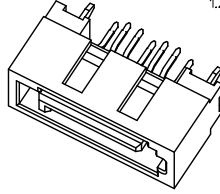
[Molex Connector Corporation](#)  
[0678008085](#)

For any questions, you can email us directly:

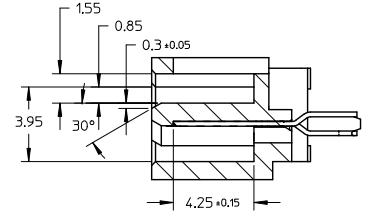
[sales@integrated-circuit.com](mailto:sales@integrated-circuit.com)



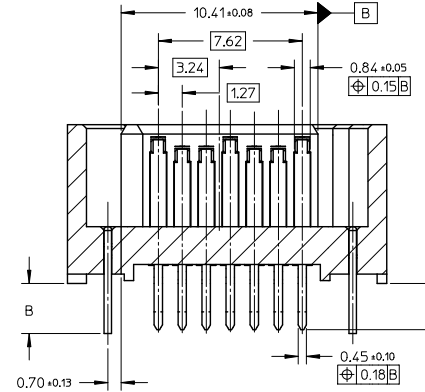
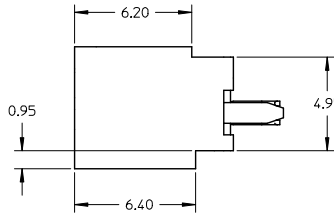
SECTION D-D



SECTION A-A



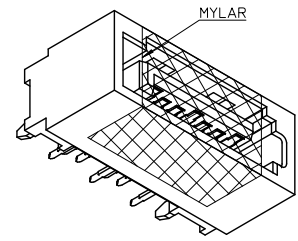
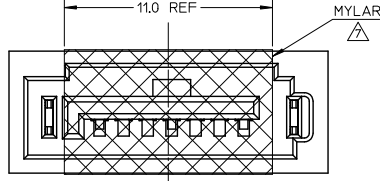
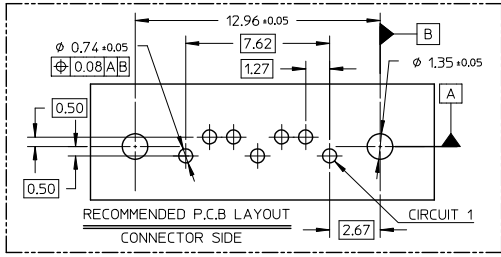
SECTION C-C



SECTION B-B

REMOVE PART NUMBER EC NO: SH2012-0062 DRAWN BY: XZHZHANG 2012/01/30 CHKD BY: XZHZHANG 2012/01/30 APPR: ATIN 2012/02/02	DESCRIPTION	QUALITY SYMBOLS	GENERAL TOLERANCES (UNLESS SPECIFIED)		DIMENSION STYLE		SCALE	DESIGN UNITS	THIRD ANGLE PROJECTION	
		$\nabla=0$ $\nabla=0$ $\nabla=0$	mm	INCH	MM ONLY	5:1	METRIC			
			4 PLACES	± ---	± ---	DRAWN BY	DATE	TITLE		
			3 PLACES	± ---	± ---	GRATE	2004/02/02	HIGH SPEED CONNECTOR		
			2 PLACES	± 0.15	± ---	CHECKED BY	DATE	1.27MM PITCH VERTICAL		
			1 PLACE	± 0.25	± ---	YAJUN	2004/02/02	DIP SOLDER TAIL		
			ANGULAR ± 1 °			APPROVED BY	DATE	MOLEX INCORPORATED		
			DRAFT WHERE APPLICABLE MUST REMAIN WITHIN DIMENSIONS			SAM	2004/02/02	MOLEX INCORPORATED		
						MATERIAL NO.	DOCUMENT NO.	SD-67800-008		SHEET NO.
						SEE SHEET 2				1 OF 2
						THIS DRAWING CONTAINS INFORMATION THAT IS PROPRIETARY TO MOLEX INCORPORATED AND SHOULD NOT BE USED WITHOUT WRITTEN PERMISSION				

10 9 8 7 6 5 4 3 2 1



SCHEMATIC DRAWING OF MYLAR  
ONLY FOR 678008205  
(SCALE 5:1)

**NOTES:**

1. MATERIAL:  
HOUSING/COLOR: SEE TABLE, GLASS FILLED, UL94V-0  
TERMINAL/PEG: BRASS
  2. TERMINAL PLATING:  
CONTACT AREA: (a) GOLD FLASH  
(b) GOLD, THICKNESS=0.76 MICRON MINIMUM  
(c) GOLD, THICKNESS=0.38 MICRON MINIMUM  
SOLDER TAIL: TIN PLATED 1.27 MICRON MINIMUM  
OVER NICKEL PLATED 1.27 MICRON MINIMUM
  3. PEG PLATING: TIN PLATED 1.27 MICRON MINIMUM  
OVER NICKEL PLATED 1.8 MICRON MINIMUM
  4. PACKAGING SPECIFICATION:  
FOR 67800-8205: TAPE & REEL, PK-67800-003  
FOR OTHER P/N: TRAY, PK-67800-001
  5. PRODUCT SPECIFICATION REFER TO PS-67491-001
  6. RECOMMENDED SOLDERING PROCESS:  
THERMAL PLASTIC FOR WAVE SOLDERING PROCESS  
HIGH TEMPERATURE THERMAL PLASTIC FOR IR SOLDERING PROCESS
- △ THE MYLAR STICKED ON THE HOUSING IS JUST USED FOR PICK-UP PLACE, PLEASE REMOVE IT AFTER REFLOW

PART NUMBER	PLATING TYPE	DIM A	DIM B	P.C.B THICKNESS	PLASTIC TYPE	PLASTIC COLOR	REMARK
67800-8245	SEE NOTE2(c)	2.10			THERMAL PLASTIC	NATURE	
67800-8041	SEE NOTE2(a)	2.45	2.65	1.60±0.05	THERMAL PLASTIC	NATURE	
67800-8085	SEE NOTE2(c)	3.25	3.45	2.40±0.05	THERMAL PLASTIC	NATURE	
67800-8082	SEE NOTE2(b)				THERMAL PLASTIC	PROCESS BLUE C ΔE<3	
67800-8075	SEE NOTE2(c)				THERMAL PLASTIC	PROCESS BLUE C ΔE<3	
67800-8072	SEE NOTE2(b)	2.85	3.05	2.00±0.05	THERMAL PLASTIC	PROCESS BLUE C ΔE<3	
67800-8071	SEE NOTE2(a)				THERMAL PLASTIC	PROCESS BLUE C ΔE<3	
67800-8235	SEE NOTE2(c)	2.10			THERMAL PLASTIC	BLACK	PURE TIN
67800-8035	SEE NOTE2(c)	2.45	2.65	1.60±0.05	THERMAL PLASTIC	BLACK	PURE TIN
67800-8032	SEE NOTE2(b)				THERMAL PLASTIC	BLACK	PURE TIN
67800-8025	SEE NOTE2(c)	3.25	3.45	2.40±0.05	THERMAL PLASTIC	BLACK	PURE TIN
67800-8021	SEE NOTE2(a)				THERMAL PLASTIC	BLACK	PURE TIN
67800-8305	SEE NOTE2(c)	2.10			THERMAL PLASTIC	BLACK	PURE TIN
67800-8005	SEE NOTE2(c)				THERMAL PLASTIC	BLACK	PURE TIN
67800-8002	SEE NOTE2(b)	2.45	2.65	1.60±0.05	THERMAL PLASTIC	BLACK	PURE TIN
67800-8001	SEE NOTE2(a)				THERMAL PLASTIC	BLACK	PURE TIN
67800-8125	SEE NOTE2(c)	3.25	3.45	2.40±0.05	THERMAL PLASTIC	BLACK	PURE TIN
67800-8122	SEE NOTE2(b)				THERMAL PLASTIC	BLACK	PURE TIN
67800-8115	SEE NOTE2(c)	2.85	3.05	2.00±0.05	HIGH TEMPERATURE THERMAL PLASTIC	BLACK	PURE TIN
67800-8205	SEE NOTE2(c)				HIGH TEMPERATURE THERMAL PLASTIC	BLACK	PURE TIN
67800-8102	SEE NOTE2(b)	2.45	2.65	1.60±0.05	HIGH TEMPERATURE THERMAL PLASTIC	BLACK	PURE TIN
67800-8101	SEE NOTE2(a)				HIGH TEMPERATURE THERMAL PLASTIC	BLACK	PURE TIN

SEE SHEET 1 EC NO: SH2012-0062 GJDRW: XZHANG 2012/01/30 CHKD: XZHANG 2012/01/30 APPR: ATIN 2012/02/02	QUALITY SYMBOLS	GENERAL TOLERANCES (UNLESS SPECIFIED)	DIMENSION STYLE	SCALE	DESIGN UNITS	THIRD ANGLE PROJECTION	
	$\nabla=0$ $\nabla=0$ $\nabla=0$	mm    INCH 4 PLACES ± --- ± --- 3 PLACES ± --- ± --- 2 PLACES ± 0.15 ± --- 1 PLACE ± 0.25 ± --- ANGULAR ± 1 °	MM ONLY	1:1	METRIC	DRAWN BY DATE GRATE 2004/02/02 CHECKED BY DATE YA JUN 2004/02/02 APPROVED BY DATE SAM 2004/02/02	TITLE HIGH SPEED CONNECTOR 1.27MM PITCH VERTICAL DIP SOLDER TAIL
		DRAFT WHERE APPLICABLE MUST REMAIN WITHIN DIMENSIONS	MATERIAL NO. SEE TABLE SIZE A3	MOLEX INCORPORATED DOCUMENT NO. SD-67800-008	SHEET NO. 2 OF 2		
			THIS DRAWING CONTAINS INFORMATION THAT IS PROPRIETARY TO MOLEX INCORPORATED AND SHOULD NOT BE USED WITHOUT WRITTEN PERMISSION				

9 8 7 6 5 4 3 2 1