

Excellent Integrated System Limited

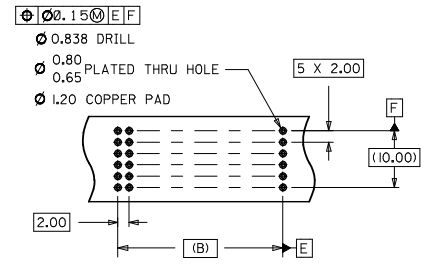
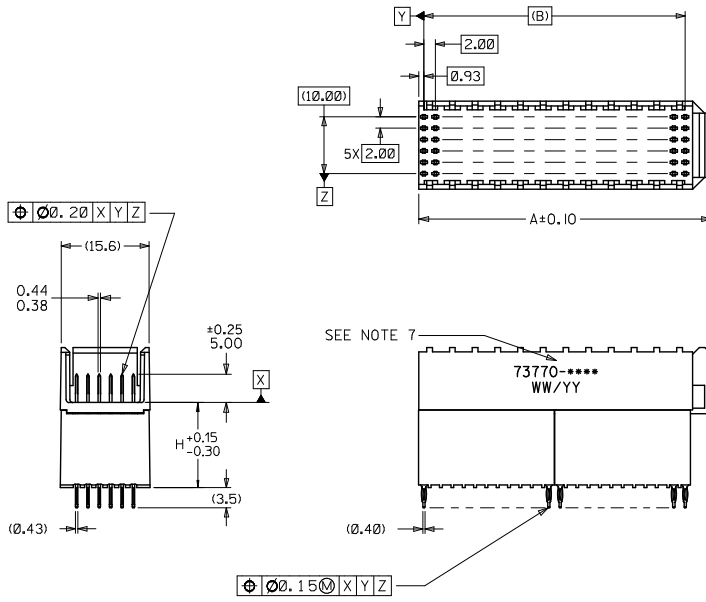
Stocking Distributor

Click to view price, real time Inventory, Delivery & Lifecycle Information:

[Molex Connector Corporation](#)
[0737700200](#)

For any questions, you can email us directly:
sales@integrated-circuit.com

ASSEMBLY P/N	TOTAL NUMBER OF SIGNAL CONTACTS	DIM "A"	DIM "B"	DIM "H"	PACKAGING SPECIFICATION
73770-0100	72	27.6	22.00	15.05	PK-70873-1873
73770-0200	72	27.6	22.00	6.05	PK-70873-0875
73770-0300	72	27.6	22.00	10.05	PK-70873-0871
73770-1100	144	51.6	46.00	15.05	PK-70873-1873
73770-1200	144	51.6	46.00	6.05	PK-70873-0875
73770-1300	144	51.6	46.00	10.05	PK-70873-0871



- NOTES:
1. MATERIALS: HOUSING-LIQUID CRYSTAL POLYMER (LCP), GLASS FILLED, UL94-0, COLOR: BLACK, TERMINAL - PHOSPHOR BRONZE
 2. FINISH: SELECTIVE GOLD (Au) IN CONTACT AREA, 0.00076 MINIMUM THICKNESS; SELECTIVE MATTE TIN (Sn) ON TAILS, NICKEL (Ni) OVERALL.
 3. THIS PART CONFORMS TO MOLEX PRODUCT SPECIFICATION PS-73780-999.
 4. THIS PART CONFORMS TO MOLEX COSMETIC SPECIFICATION PS-45499-002 CLASS C.
 5. RECOMMENDED PCB THICKNESS: 2.50 MINIMUM.
 6. SEE TABLE FOR PACKAGING SPECIFICATION.
 7. PARTS MARKED WITH PART NUMBER AND DATE CODE APPROXIMATELY WHERE SHOWN.

LEAD FREE CONVERSION EC NO: UCP2019-3253 DRAWN BY: DRW/WHITPLE CHECKED BY: CHK/MOLLE APPROVED BY: APPR/SMILLER	QUALITY SYMBOLS	GENERAL TOLERANCES (UNLESS SPECIFIED)		DIMENSION STYLE		SCALE	DESIGN UNITS	THIRD ANGLE PROJECTION	
		mm	INCH	MM ONLY	DATE	2:1	METRIC	TITLE	
REV	▽=0	4 PLACES	± ---	± ---	DRAWN BY	DATE	SALES ASSEMBLY HDM BACKPLANE STACKING MOD CLOSED END OPT PRESSFIT		molex SD-73770-001
	▽=0	3 PLACES	± ---	± ---	CHECKED BY	DATE			
	▽=0	2 PLACES	± 0.05	± ---	SREED	1997/03/07			
	▽=0	1 PLACE	± 0.10	± ---	APPROVED BY	DATE			
	▽=0	0 PLACE	± ---	± ---	C/BIXLER	1997/03/07			
		ANGULAR ±1/2°		MATERIAL NO.	DOCUMENT NO.	SHEET NO.			
		DRAFT WHERE APPLICABLE MUST REMAIN WITHIN DIMENSIONS		SEE TABLE		1 OF 1			
		THIS DRAWING CONTAINS INFORMATION THAT IS PROPRIETARY TO MOLEX INCORPORATED AND SHOULD NOT BE USED WITHOUT WRITTEN PERMISSION							