

Excellent Integrated System Limited

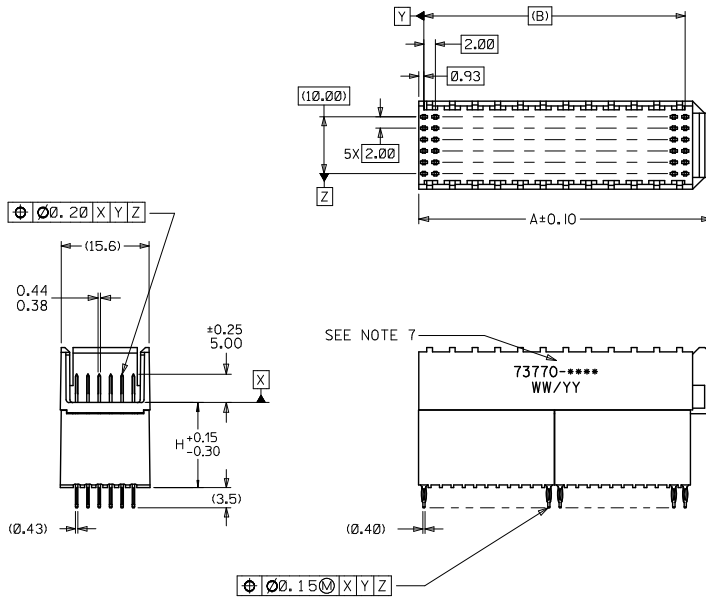
Stocking Distributor

Click to view price, real time Inventory, Delivery & Lifecycle Information:

[Molex Connector Corporation](#)
[0737701300](#)

For any questions, you can email us directly:
sales@integrated-circuit.com

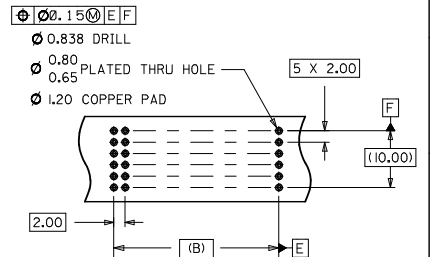
ASSEMBLY P/N	TOTAL NUMBER OF SIGNAL CONTACTS	DIM "A"	DIM "B"	DIM "H"	PACKAGING SPECIFICATION
73770-0100	72	27.6	22.00	15.05	PK-70873-1873
73770-0200	72	27.6	22.00	6.05	PK-70873-0875
73770-0300	72	27.6	22.00	10.05	PK-70873-0871
73770-1100	144	51.6	46.00	15.05	PK-70873-1873
73770-1200	144	51.6	46.00	6.05	PK-70873-0875
73770-1300	144	51.6	46.00	10.05	PK-70873-0871



NOTES:

1. MATERIALS: HOUSING-LIQUID CRYSTAL POLYMER (LCP), GLASS FILLED, UL94-0, COLOR: BLACK, TERMINAL - PHOSPHOR BRONZE
2. FINISH: SELECTIVE GOLD (Au) IN CONTACT AREA, 0.00076 MINIMUM THICKNESS; SELECTIVE MATTE TIN (Sn) ON TAILS, NICKEL (Ni) OVERALL.
3. THIS PART CONFORMS TO MOLEX PRODUCT SPECIFICATION PS-73780-999.
4. THIS PART CONFORMS TO MOLEX COSMETIC SPECIFICATION PS-45499-002 CLASS C.
5. RECOMMENDED PCB THICKNESS: 2.50 MINIMUM.
6. SEE TABLE FOR PACKAGING SPECIFICATION.
7. PARTS MARKED WITH PART NUMBER AND DATE CODE APPROXIMATELY WHERE SHOWN.

LEAD FREE CONVERSION	QUALITY SYMBOLS	GENERAL TOLERANCES (UNLESS SPECIFIED)		DIMENSION STYLE		SCALE	DESIGN UNITS	THIRD ANGLE PROJECTION
		mm	INCH	MM ONLY	DATE			
EC NO: UCP2019-3253	▽=0	4 PLACES	± ---	± ---	DRAWN BY	2:1	METRIC	☉
DRW:WHITPLE 2013/02/04	▽=0.05	3 PLACES	± ---	± ---	DATE			
CHK:MOULFE 2013/02/04	▽=0.10	2 PLACES	± 0.05	± ---	CHECKED BY			
APP:SMILLER 2013/06/05	▽=0	1 PLACE	± 0.10	± ---	DATE			
		0 PLACE	± ---	± ---	APPROVED BY			
		ANGULAR ±1/2°			DATE			
		DRAFT WHERE APPLICABLE MUST REMAIN WITHIN DIMENSIONS			C			
		SEE TABLE						
		MATERIAL NO.						
		DOCUMENT NO.						
		SHEET NO.						
		1 OF 1						



BACKPLANE HOLE PATTERN

SALES ASSEMBLY HDM
BACKPLANE STACKING MOD
CLOSED END OPT PRESSFIT



SD-73770-001