

Excellent Integrated System Limited

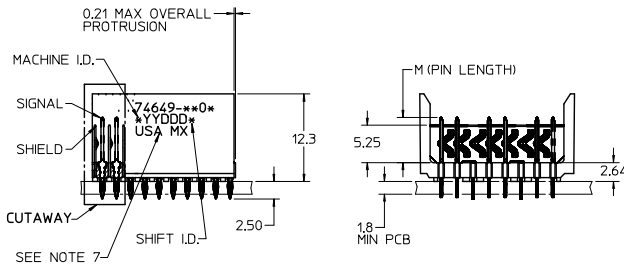
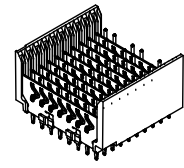
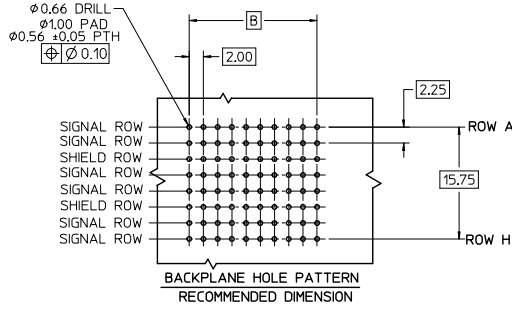
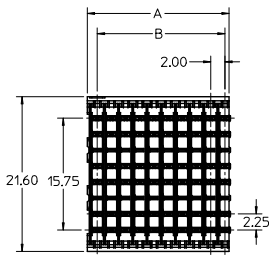
Stocking Distributor

Click to view price, real time Inventory, Delivery & Lifecycle Information:

[Molex Connector Corporation](#)
[0746498501](#)

For any questions, you can email us directly:

sales@integrated-circuit.com



NOTES:

- MATERIAL:**
HOUSING -LIQUID CRYSTAL POLYMER (LCP),
GLASS-FILLED, UL 94V-0, COLOR BLACK.
SIGNAL PIN & SHIELD -HIGH PERFORMANCE COPPER ALLOY.
- FINISHES:**
CONTACT AREA: SELECTIVE GOLD (Au)
PCB TAILS: SELECTIVE MATTE TIN (Sn)
NICKEL (Ni) OVERALL.
- THIS PART CONFORMS TO MOLEX PRODUCT SPECIFICATION PS-74031-999.
- FOR MIXED CONTACT MATING LENGTHS CONSULT MOLEX FOR AVAILABILITY.
- FOR SPECIFIC PART NUMBERS AND MATING INFORMATION REFER TO SHEET 2.
- PACKAGE PER PK-74060-003.
- EITHER MARK PART NUMBER AND DATE CODE APPROXIMATELY WHERE SHOWN OR PLACE LABEL ON THE TUBE.
- MAPS (MOLEX ADVANCED PLATING SYSTEM).

UPDATE TABLE EC NO: UCP2014-3396 DRWNSWANG01 2014/02/14 CHKD:MOLPE 2014/02/14 APPR:SMILLER 2014/02/25	QUALITY SYMBOLS ∇=0 ∇=0 ∇=0	GENERAL TOLERANCES (UNLESS SPECIFIED)		DIMENSION STYLE MM ONLY		SCALE 2.5:1	DESIGN UNITS METRIC	THIRD ANGLE PROJECTION	
		4 PLACES ± --- ± ---	mm INCH	DRAWN BY MOWANG	DATE 2001/01/22	TITLE HSD SALES ASSEMBLY 8 ROW OPEN END BACKPLANE			
		3 PLACES ± --- ± ---	2 PLACES ± 0.25 ± ---	CHECKED BY JLAURX	DATE 2001/01/23				
		1 PLACE ± 0.38 ± ---	0 PLACE ± ±	APPROVED BY CBIXLER	DATE 2001/01/24				
ANGULAR ±1/2°		MATERIAL NO. SEE SHEET 2		DOCUMENT NO. SD-74649-002		SHEET NO. 1 OF 2			
DRAFT WHERE APPLICABLE MUST REMAIN WITHIN DIMENSIONS		THIS DRAWING CONTAINS INFORMATION THAT IS PROPRIETARY TO MOLEX INCORPORATED AND SHOULD NOT BE USED WITHOUT WRITTEN PERMISSION							

MATERIAL NUMBER ASSIGNMENT

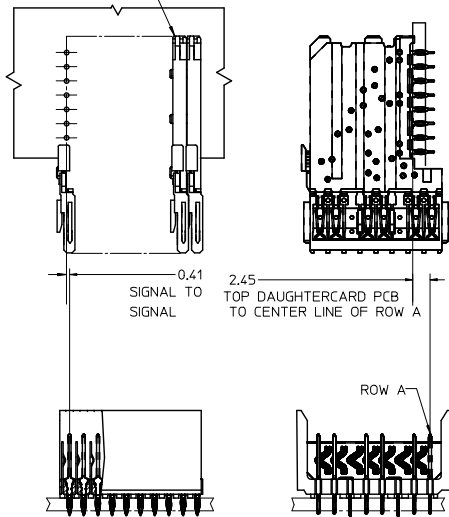
74649-**0*

- 10 = 10 COLUMN MATTE TIN (FORMERLY TIN/LEAD)
- 25 = 25 COLUMN MATTE TIN (FORMERLY TIN/LEAD)
- 60 = 10 COLUMN MATTE TIN (MAPS)
- 75 = 25 COLUMN MATTE TIN (MAPS)
- 90 = 10 COLUMN MATTE TIN
- 85 = 25 COLUMN MATTE TIN

PIN HEIGHT / PLATING
 1-4 = 0.25 or 0.76 GOLD
 6-9 = 1.27 GOLD

- 1 & 6 = 4.75
- 2 & 7 = 6.25
- 3 & 8 = 4.25
- 4 & 9 = 5.15

DAUGHTERCARD
 CONNECTOR SIDE



PART NUMBER	COLUMN	NUMBER OF SIGNAL PIN	NUMBER OF SHIELD	A	B	M	GOLD THICKNESS MICROMETER	TIN THICKNESS MICROMETER
74649-6001							0.25 MAPS	
74649-0001	10	60	10	20.00	18.00	4.75	0.76	0.76-1.52
74649-0006							1.27	
74649-7501							0.25 MAPS	
74649-0501	25	150	25	50.00	48.00	6.25	0.76	
74649-0506							1.27	
74649-6002							0.25 MAPS	
74649-0002	10	60	10	20.00	18.00	4.25	0.76	
74649-0007							1.27	
74649-7502							0.25 MAPS	
74649-0502	25	150	25	50.00	48.00	5.15	0.76	
74649-0507							1.27	
74649-6003							0.25 MAPS	
74649-0003	10	60	10	20.00	18.00	4.25	0.76	
74649-0008							1.27	
74649-7503							0.25 MAPS	
74649-0503	25	150	25	50.00	48.00	5.15	0.76	
74649-0508							1.27	
74649-6004							0.25 MAPS	
74649-0004	10	60	10	20.00	18.00	4.25	0.76	
74649-0009							1.27	
74649-7504							0.25 MAPS	
74649-0504	25	150	25	50.00	48.00	5.15	0.76	
74649-0509							1.27	

SEE SHEET 1 EC NO: UCP2014-3396 DRAWN BY: 2014/02/14 CHK: WANG01 APPR: MILLER DATE: 2014/02/14 DATE: 2014/02/14 DATE: 2014/02/14	QUALITY SYMBOLS	GENERAL TOLERANCES (UNLESS SPECIFIED)	DIMENSION STYLE	SCALE	DESIGN UNITS	THIRD ANGLE PROJECTION	
	▽=0	mm INCH	MM ONLY	2.5:1	METRIC		
	▽=0	4 PLACES ± --- ± ---	DRAWN BY: MOWANG DATE: 2001/01/22	TITLE: HSD SALES ASSEMBLY 8 ROW OPEN END BACKPLANE			
	▽=0	3 PLACES ± --- ± ---	CHECKED BY: JL AURX DATE: 2001/01/23	DOCUMENT NO. SD-74649-002 SHEET NO. 2 OF 2			
	▽=0	2 PLACES ± 0.25 ± ---	APPROVED BY: CBIXLER DATE: 2001/01/24				
	1 PLACE ± 0.38 ± ---		DRAFT WHERE APPLICABLE MUST REMAIN WITHIN DIMENSIONS				
	0 PLACE ± ±		SEE TABLE				
	ANGULAR ± 1/2°		THIS DRAWING CONTAINS INFORMATION THAT IS PROPRIETARY TO MOLEX INCORPORATED AND SHOULD NOT BE USED WITHOUT WRITTEN PERMISSION				