

## Excellent Integrated System Limited

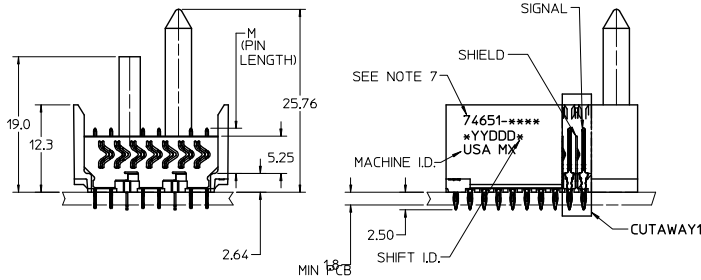
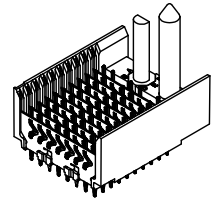
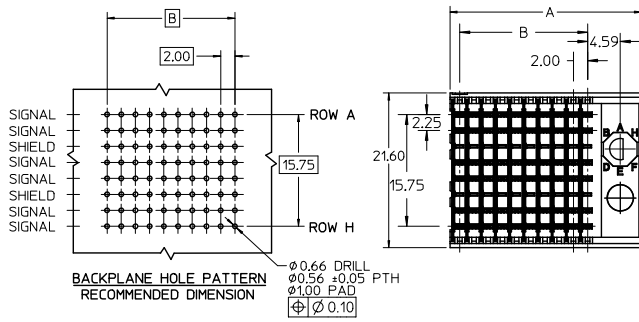
Stocking Distributor

Click to view price, real time Inventory, Delivery & Lifecycle Information:

[Molex Connector Corporation](#)  
[0746512511](#)

For any questions, you can email us directly:

[sales@integrated-circuit.com](mailto:sales@integrated-circuit.com)



NOTES:

- MATERIAL: HOUSING -LIQUID CRYSTAL POLYMER (LCP) GLASS-FILLED. UL 94-0. COLOR BLACK. SIGNAL & SHIELD -HIGH PERFORMANCE COPPER ALLOY.
- FINISHES:  
CONTACT AREA: SELECTIVE GOLD (Au)  
PCB TAILS: SELECTIVE MATTE TIN (Sn)  
NICKEL (Ni) OVERALL.
- THIS PART CONFORMS TO MOLEX PRODUCT SPECIFICATION PS-74031-999.
- FOR MIXED CONTACT MATING LENGTHS CONSULT MOLEX FOR AVAILABILITY.
- FOR SPECIFIC PART NUMBER AND MATING INFORMATION REFER TO SHEET 2.
- PACKAGE PER PK-74061-003.
- MARK PART NUMBER AND DATE CODE APPROXIMATELY WHERE SHOWN
- MAPS (MOLEX ADVANCED PLATING SYSTEM).

THE PRIMARY CARTON WITH A LABEL STATING "ELV AND RoHS COMPLIANT" IS LEAD FREE. CARTONS WITHOUT THIS LABEL MAY CONTAIN LEAD.

<b>LEAD FREE CONVERSION</b> EC NO: UCP2015-0687 DRAWINGS: 2012/08/24 CHK: MÖLLE: 2012/11/28 APPR: SMILLER: 2012/12/14	QUALITY SYMBOLS ∇=0 ∇=0 ∇=0	GENERAL TOLERANCES (UNLESS SPECIFIED)		DIMENSION STYLE		SCALE	DESIGN UNITS	THIRD ANGLE PROJECTION	
				MM ONLY		2.5:1	METRIC		
				DRAWN BY DATE		TITLE			
				CHECKED BY DATE		HSD SALES ASSEMBLY 8 ROW SHIELD END BACKPLANE			
		APPROVED BY DATE							
		MATERIAL NO.						DOCUMENT NO.	
		ANGULAR ±1/2°		SEE SHEET 2		SD-74651-002		SHEET NO.	
		DRAFT WHERE APPLICABLE MUST REMAIN WITHIN DIMENSIONS		SIZE C		THIS DRAWING CONTAINS INFORMATION THAT IS PROPRIETARY TO MOLEX INCORPORATED AND SHOULD NOT BE USED WITHOUT WRITTEN PERMISSION		1 OF 2	

M/N 74651-( )		-**1*	-**2*	-**3*	-**4*	-**5*	-**6*	-**7*	-**8*
KEYING PIN ORIENTATION	0	A	B	C	D	E	F	G	H

74651-\*\*\*\*

NUMBER OF COLUMNS/  
PLATING

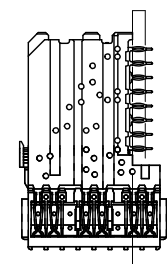
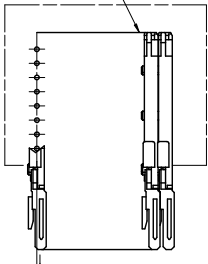
- 10 = 10 COLUMN MATTE TIN (FORMERLY TIN/LEAD)
- 25 = 25 COLUMN MATTE TIN (FORMERLY TIN/LEAD)
- 60 = 10 COLUMN MATTE TIN (MAPS)
- 75 = 25 COLUMN MATTE TIN (MAPS)
- 90 = 10 COLUMN MATTE TIN
- 85 = 25 COLUMN MATTE TIN

CONTACT LOAD  
(PIN LENGTH)

- 1 & 6 = 4.75
- 2 & 7 = 6.25
- 3 & 8 = 4.25
- 4 & 9 = 5.15

PART NUMBER	COLUMN	NUMBER OF SIGNAL PIN	NUMBER OF SHIELD	A	B	M	GOLD THICKNESS MICROMETER	TIN THICKNESS MICROMETER
74651-60*1							0.25 MAPS	
74651-90*1	10	60	10	27.00	18.00	4.75	0.76	0.76-1.52
74651-75*1							1.27	
74651-75*1	25	150	25	57.00	48.00		0.25 MAPS	
74651-75*1						6.25	0.76	
74651-90*2							1.27	
74651-90*2	10	60	10	27.00	18.00		0.25 MAPS	
74651-90*2						4.25	0.76	
74651-75*2							1.27	
74651-75*2	25	150	25	57.00	48.00		0.25 MAPS	
74651-90*3						5.15	0.76	
74651-90*3	10	60	10	27.00	18.00		1.27	
74651-90*3	25	150	25	57.00	48.00		0.25 MAPS	
74651-90*3						4.25	0.76	
74651-75*3							1.27	
74651-75*3	25	150	25	57.00	48.00		0.25 MAPS	
74651-90*4						6.25	0.76	
74651-90*4	10	60	10	27.00	18.00		1.27	
74651-90*4	25	150	25	57.00	48.00		0.25 MAPS	
74651-90*4						4.25	0.76	
74651-75*4							1.27	
74651-75*4	25	150	25	57.00	48.00		0.25 MAPS	
74651-90*4						5.15	0.76	
74651-90*4	10	60	10	27.00	18.00		1.27	
74651-90*4	25	150	25	57.00	48.00		0.25 MAPS	

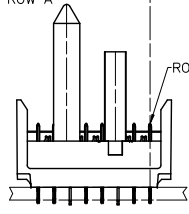
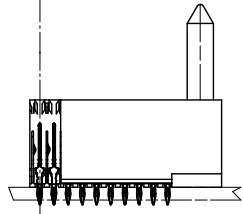
DAUGHTERCARD CONNECTOR SIDE



0.41  
SIGNAL TO SIGNAL

2.45  
TOP DAUGHTERCARD PCB TO CENTER OF ROW A

ROW A



SEE SHEET 1 EC NO: UCP 2013-0687 DRAWINGS: 2012/08/24 CHK: CHOMLIFE 2012/11/28 APPR: SMILLER 2012/12/14 REV: DESCRIPTION	QUALITY SYMBOLS	GENERAL TOLERANCES (UNLESS SPECIFIED)	DIMENSION STYLE MM ONLY	SCALE 2.5:1	DESIGN UNITS METRIC	THIRD ANGLE PROJECTION
	▽=0	4 PLACES ± --- ± ---	DRAWN BY MOWANG	DATE 2001/03/26	HSD SALES ASSEMBLY 8 ROW SHIELD END BACKPLANE <b>molex</b> SD-74651-002 SHEET NO. 2 OF 2	
	▽=0	3 PLACES ± --- ± ---	CHECKED BY JLAURX	DATE 2001/04/01		
	▽=0	2 PLACES ± --- ± ---	APPROVED BY CBIXLER	DATE 2001/04/01		
▽=0	1 PLACE ± --- ± ---	MATERIAL NO.	DOCUMENT NO.			
		0 PLACE ± --- ± ---	ANGULAR ± 1/2°			
			DRAFT WHERE APPLICABLE MUST REMAIN WITHIN DIMENSIONS			