

Excellent Integrated System Limited

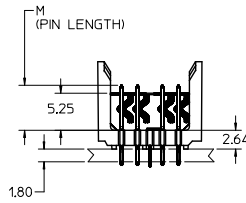
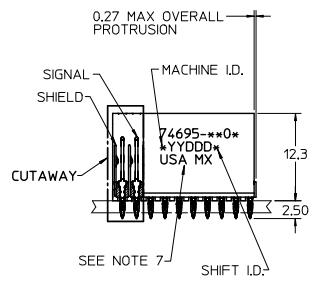
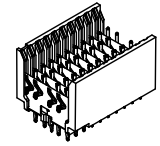
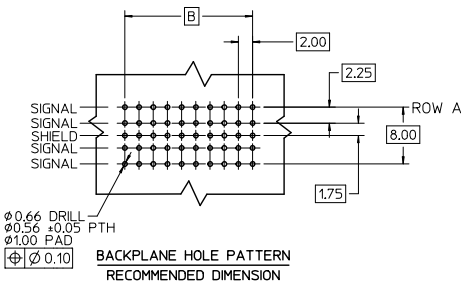
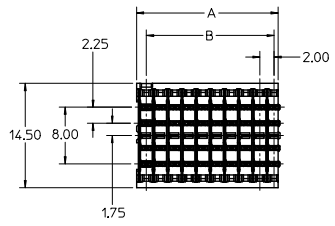
Stocking Distributor

Click to view price, real time Inventory, Delivery & Lifecycle Information:

[Molex Connector Corporation](#)
[0746952502](#)

For any questions, you can email us directly:

sales@integrated-circuit.com

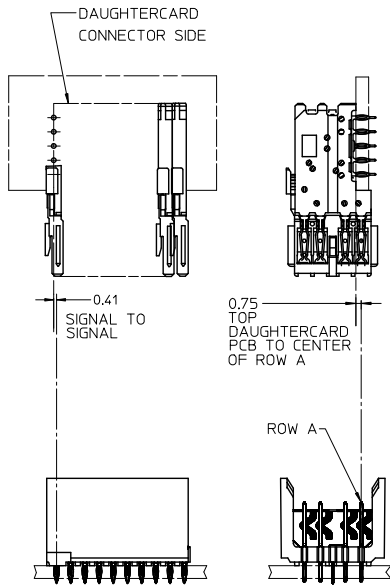


NOTES:

1. MATERIAL: HOUSING -LIQUID CRYSTAL POLYMER (LCP). GLASS-FILLED. UL 94 V-0. COLOR BLACK. SIGNAL & SHIELD -COPPER ALLOY.
2. FINISHES: SELECTIVE GOLD (Au) ON CONTACT AREA. SELECTIVE MATTE TIN (Sn) ON PCB TAILS. NICKEL (Ni) OVERALL.
3. THIS PART CONFORMS TO MOLEX PRODUCT SPECIFICATION PS-74031-999.
4. FOR MIXED CONTACT MATING LENGTHS CONSULT MOLEX FOR AVAILABILITY.
5. FOR SPECIFIC PART NUMBER AND MATING INFORMATION REFER TO SHEET 2.
6. PACKAGE PER PK-74695-003.
7. EITHER MARK PART NUMBER AND DATE CODE APPROXIMATELY WHERE SHOWN OR PLACE LABEL ON THE TUBE.
8. MAPS (MOLEX ADVANCED PLATING SYSTEM).

THE PRIMARY CARTON WITH A LABEL STATING "ELV AND RoHS COMPLIANT" IS LEAD FREE. CARTONS WITHOUT THIS LABEL MAY CONTAIN LEAD.

LEAD FREE CONVERSION EC NO: UCP-2015-0687 DRAWING NO: 2012/08/20 CHK: MULLER APPR: MILLER 2012/11/28 2012/12/14	QUALITY SYMBOLS ∇=0 ∇=0 ∇=0	GENERAL TOLERANCES (UNLESS SPECIFIED)		DIMENSION STYLE MM ONLY		SCALE 2.5:1	DESIGN UNITS METRIC	THIRD ANGLE PROJECTION	
		4 PLACES ± --- ± --- 3 PLACES ± --- ± --- 2 PLACES ± --- ± --- 1 PLACE ± --- ± --- 0 PLACE ± --- ± ---	mm INCH	DRAWN BY MOWANG	DATE 2001/04/11	TITLE HSD SALES ASSEMBLY 5 ROW OPEN END BACKPLANE			
		ANGULAR ±1/2°		CHECKED BY NMARTIN	DATE 2001/04/14	MATERIAL NO. SEE TABLES			
		DRAFT WHERE APPLICABLE MUST REMAIN WITHIN DIMENSIONS		APPROVED BY CBIXLER	DATE 2001/04/14	DOCUMENT NO. SD-74695-002		SHEET NO. 1 OF 3	



MATERIAL NUMBER ASSIGNMENT

74695-**0*

SEE TABLES PAGE 3.

NUMBER OF COLUMNS/PLATING

- 10 = 10 COLUMN MATTE TIN (FORMERLY TIN/LEAD)
- 12 = 12 COLUMN MATTE TIN (FORMERLY TIN/LEAD)
- 25 = 25 COLUMN MATTE TIN (FORMERLY TIN/LEAD)
- 60 = 10 COLUMN MATTE TIN (MAPS)
- 62 = 12 COLUMN MATTE TIN (MAPS)
- 75 = 25 COLUMN MATTE TIN (MAPS)
- 90 = 10 COLUMN MATTE TIN
- 92 = 12 COLUMN MATTE TIN
- 85 = 25 COLUMN MATTE TIN

SEE SHEET 1 EC NO: UCP2013-0687 2012/08/20 DRAWING: CHK:RMOULFE 2012/11/28 APPR:SMILLER 2012/12/14	QUALITY SYMBOLS ∇=0 ∇=0 ∇=0	GENERAL TOLERANCES (UNLESS SPECIFIED)		DIMENSION STYLE		SCALE	DESIGN UNITS	THIRD ANGLE PROJECTION			
				MM ONLY		2.5:1	METRIC	TITLE			
		4 PLACES ± --- ± ---		DRAWN BY		DATE		HSD SALES ASSEMBLY 5 ROW OPEN END BACKPLANE 			
		3 PLACES ± --- ± ---		MOWANG		2001/04/11					
2 PLACES ± --- ± ---		CHECKED BY		DATE							
1 PLACE ± --- ± ---		NMARTIN		2001/04/14							
0 PLACE ± --- ± ---		APPROVED BY		DATE		DOCUMENT NO.					
		CBIXLER		2001/04/14		SD-74695-002					
		ANGULAR ±1/2°		MATERIAL NO.		SHEET NO.					
DRAFT WHERE APPLICABLE MUST REMAIN WITHIN DIMENSIONS		SEE TABLES		SIZE		2 OF 3					
				C		THIS DRAWING CONTAINS INFORMATION THAT IS PROPRIETARY TO MOLEX INCORPORATED AND SHOULD NOT BE USED WITHOUT WRITTEN PERMISSION					

PART NUMBER	COLUMN	NUMBER OF SIGNAL PIN	NUMBER OF SHIELD	A	B	M	GOLD THICKNESS MICROMETER	TIN THICKNESS MICROMETER
74695-6001							0.25 MAPS	
74695-9001	10	40	10	20.00	18.00		0.76	
74695-9006							1.27	
74695-6201							0.25 MAPS	
74695-9201	12	48	12	24.00	22.00	4.75	0.76	
74695-9206							1.27	
74695-7501							0.25 MAPS	
74695-9501	25	100	25	50.00	18.00		0.76	
74695-8506							1.27	
74695-6002							0.25 MAPS	
74695-9002	10	40	10	20.00	18.00		0.76	
74695-9007							1.27	
74695-6202							0.25 MAPS	
74695-9202	12	48	12	24.00	22.00	6.25	0.76	
74695-9207							1.27	
74695-7502							0.25 MAPS	
74695-8502	25	100	25	50.00	18.00		0.76	
74695-8507							1.27	
74695-6003							0.25 MAPS	
74695-9003	10	40	10	20.00	18.00		0.76	
74695-9008							1.27	
74695-6203							0.25 MAPS	
74695-9203	12	48	12	24.00	22.00	4.25	0.76	
74695-9208							1.27	
74695-7503							0.25 MAPS	
74695-8503	25	100	25	50.00	18.00		0.76	
74695-8508							1.27	
74695-6004							0.25 MAPS	
74695-9004	10	40	10	20.00	18.00		0.76	
74695-9009							1.27	
74695-6204							0.25 MAPS	
74695-9204	12	48	12	24.00	22.00	5.15	0.76	
74695-9209							1.27	
74695-7504							0.25 MAPS	
74695-8504	25	100	25	50.00	18.00		0.76	
74695-8509							1.27	

PART NUMBER	COLUMN	NUMBER OF SIGNAL PIN	NUMBER OF SHIELD	A	B	M	GOLD THICKNESS MICROMETER	TIN THICKNESS MICROMETER
74695-1001							0.76	
74695-1006	10	40	10	20.00	18.00		1.27	
74695-1201							0.76	
74695-1206	12	48	12	24.00	22.00	4.75	1.27	
74695-2501							0.76	
74695-2506	25	100	25	50.00	48.00		1.27	
74695-1002							0.76	
74695-1007	10	40	10	20.00	18.00		1.27	
74695-1202							0.76	
74695-1207	12	48	12	24.00	22.00	6.25	1.27	
74695-2502							0.76	
74695-2507	25	100	25	50.00	48.00		1.27	
74695-1003							0.76	
74695-1008	10	40	10	20.00	18.00		1.27	
74695-1203							0.76	
74695-1208	12	48	12	24.00	22.00	4.25	1.27	
74695-2503							0.76	
74695-2508	25	100	25	50.00	48.00		1.27	
74695-1004							0.76	
74695-1009	10	40	10	20.00	18.00		1.27	
74695-1204							0.76	
74695-1209	12	48	12	24.00	22.00	5.15	1.27	
74695-2504							0.76	
74695-2509	25	100	25	50.00	48.00		1.27	

LEAD FREE
(FORMERLY TIN/LEAD)
CHART

LEAD FREE CHART

SEE SHEET 1 EC NO: UCP2013-0687 DRAWN BY: 2012/08/20 CHK: KIMOLFE 2012/11/28 APPR: SMILLER 2012/12/14 DESCRIPTION:	QUALITY SYMBOLS □=0 ▽=0 ○=0	GENERAL TOLERANCES (UNLESS SPECIFIED)		DIMENSION STYLE MM ONLY		SCALE 2.5:1	DESIGN UNITS METRIC	THIRD ANGLE PROJECTION	
		4 PLACES ± --- ± --- 3 PLACES ± --- ± --- 2 PLACES ± --- ± --- 1 PLACE ± --- ± --- 0 PLACE ± ±	mm INCH	DRAWN BY: MOWANG DATE: 2011/04/11	CHECKED BY: NMARTIN DATE: 2011/04/14	TITLE: HSD SALES ASSEMBLY 5 ROW OPEN END BACKPLANE			
		ANGULAR ±1/2°		MATERIAL NO. SEE TABLE	DOCUMENT NO. SD-74695-002	SHEET NO. 3 OF 3			
		DRAFT WHERE APPLICABLE MUST REMAIN WITHIN DIMENSIONS		THIS DRAWING CONTAINS INFORMATION THAT IS PROPRIETARY TO MOLEX INCORPORATED AND SHOULD NOT BE USED WITHOUT WRITTEN PERMISSION					