

Excellent Integrated System Limited

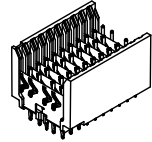
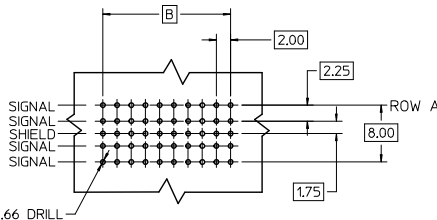
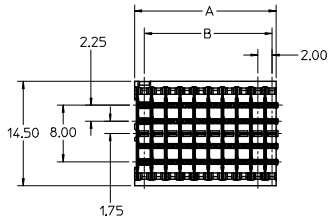
Stocking Distributor

Click to view price, real time Inventory, Delivery & Lifecycle Information:

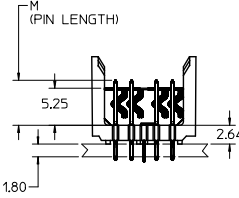
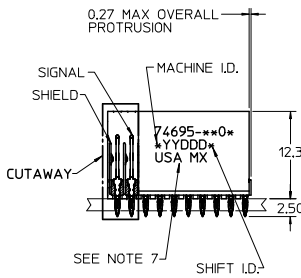
[Molex Connector Corporation](#)
[0746959001](#)

For any questions, you can email us directly:

sales@integrated-circuit.com



$\phi 0.66$ DRILL
 $\phi 0.56 \pm 0.05$ PTH
 $\phi 1.00$ PAD
 $\phi 0.10$
BACKPLANE HOLE PATTERN
 RECOMMENDED DIMENSION

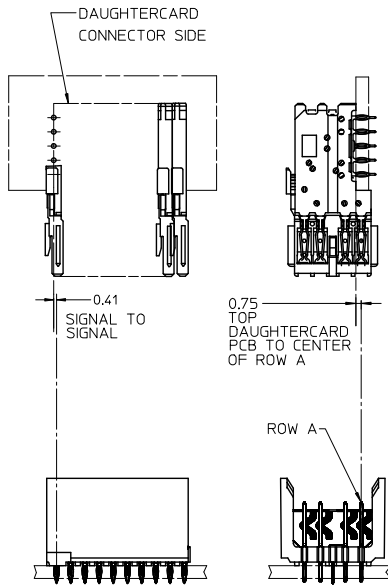


NOTES:

1. MATERIAL: HOUSING -LIQUID CRYSTAL POLYMER (LCP). GLASS-FILLED. UL 94 V-0. COLOR BLACK. SIGNAL & SHIELD -COPPER ALLOY.
2. FINISHES: SELECTIVE GOLD (Au) ON CONTACT AREA. SELECTIVE MATTE TIN (Sn) ON PCB TAILS. NICKEL (Ni) OVERALL.
3. THIS PART CONFORMS TO MOLEX PRODUCT SPECIFICATION PS-74031-999.
4. FOR MIXED CONTACT MATING LENGTHS CONSULT MOLEX FOR AVAILABILITY.
5. FOR SPECIFIC PART NUMBER AND MATING INFORMATION REFER TO SHEET 2.
6. PACKAGE PER PK-74695-003.
7. EITHER MARK PART NUMBER AND DATE CODE APPROXIMATELY WHERE SHOWN OR PLACE LABEL ON THE TUBE.
8. MAPS (MOLEX ADVANCED PLATING SYSTEM).

THE PRIMARY CARTON WITH A LABEL STATING "ELV AND RoHS COMPLIANT" IS LEAD FREE. CARTONS WITHOUT THIS LABEL MAY CONTAIN LEAD.

| | | | | | | | | | |
|---|---|---------------------------------------|--|---|--|------------------|--------------|------------------------|--|
| LEAD FREE CONVERSION EC NO: UCP-2015-0687 DRAWING NO: 2012/08/20 CHK: MULLER APPR: MILLER 2012/11/28 2012/12/14 | QUALITY SYMBOLS $\nabla \Rightarrow \emptyset$ $\nabla \Rightarrow \emptyset$ $\nabla \Rightarrow \emptyset$ | GENERAL TOLERANCES (UNLESS SPECIFIED) | | DIMENSION STYLE | | SCALE | DESIGN UNITS | THIRD ANGLE PROJECTION | |
| | | (mm) | | MM ONLY | | 2.5:1 | METRIC | | |
| | | 4 PLACES ± | | DRAWN BY | | DATE | | TITLE | |
| | | 3 PLACES ± | | MOWANG | | 2001/04/11 | | HSD SALES ASSEMBLY | |
| 2 PLACES ± | | CHECKED BY | | DATE | | 5 ROW OPEN END | | | |
| 1 PLACE ± | | NMARTIN | | 2001/04/14 | | BACKPLANE | | | |
| 0 PLACE ± | | APPROVED BY | | DATE | | molex | | | |
| ANGULAR ±1/2° | | CBI XLER | | 2001/04/14 | | DOCUMENT NO. | | | |
| DRAFT WHERE APPLICABLE MUST REMAIN WITHIN DIMENSIONS | | SEE TABLES | | MATERIAL NO. | | SD-74695-002 | | | |
| | | SIZE C | | THIS DRAWING CONTAINS INFORMATION THAT IS PROPRIETARY TO MOLEX INCORPORATED AND SHOULD NOT BE USED WITHOUT WRITTEN PERMISSION | | SHEET NO. 1 OF 3 | | | |



MATERIAL NUMBER ASSIGNMENT

74695-**0*

SEE TABLES PAGE 3.

NUMBER OF COLUMNS/PLATING

- 10 = 10 COLUMN MATTE TIN (FORMERLY TIN/LEAD)
- 12 = 12 COLUMN MATTE TIN (FORMERLY TIN/LEAD)
- 25 = 25 COLUMN MATTE TIN (FORMERLY TIN/LEAD)
- 60 = 10 COLUMN MATTE TIN (MAPS)
- 62 = 12 COLUMN MATTE TIN (MAPS)
- 75 = 25 COLUMN MATTE TIN (MAPS)
- 90 = 10 COLUMN MATTE TIN
- 92 = 12 COLUMN MATTE TIN
- 85 = 25 COLUMN MATTE TIN

| | | | | | | | | | | |
|---|--------------------------------------|--|--|--------------------------------------|--|---|--------------|------------------------|--|--|
| SEE SHEET 1 EC NO: UCP2013-0687 2012/08/20 DRAWING: CHK:DMULFE 2012/11/28 APPR:SMILLER 2012/12/14 | QUALITY SYMBOLS ∇=0 ∇=0 ∇=0 | GENERAL TOLERANCES (UNLESS SPECIFIED) | | DIMENSION STYLE | | SCALE | DESIGN UNITS | THIRD ANGLE PROJECTION | | |
| | | | | MM ONLY | | 2.5:1 | METRIC | | | |
| | | | | DRAWN BY: MOWANG DATE: 2001/04/11 | | TITLE: HSD SALES ASSEMBLY 5 ROW OPEN END BACKPLANE | | | | |
| | | | | CHECKED BY: NMARTIN DATE: 2001/04/14 | | molex | | | | |
| | | APPROVED BY: CBIXLER DATE: 2001/04/14 | | DOCUMENT NO. SD-74695-002 | | | | | | |
| | | ANGULAR ±1/2° | | MATERIAL NO. | | | | | | |
| | | DRAFT WHERE APPLICABLE MUST REMAIN WITHIN DIMENSIONS | | SEE TABLES | | THIS DRAWING CONTAINS INFORMATION THAT IS PROPRIETARY TO MOLEX INCORPORATED AND SHOULD NOT BE USED WITHOUT WRITTEN PERMISSION | | | | |

| PART NUMBER | COLUMN | NUMBER OF SIGNAL PIN | NUMBER OF SHIELD | A | B | M | GOLD THICKNESS MICROMETER | TIN THICKNESS MICROMETER |
|-------------|--------|----------------------|------------------|-------|-------|------|---------------------------|--------------------------|
| 74695-6001 | | | | | | | 0.25 MAPS | |
| 74695-9001 | 10 | 40 | 10 | 20.00 | 18.00 | | 0.76 | |
| 74695-9006 | | | | | | | 1.27 | |
| 74695-6201 | | | | | | | 0.25 MAPS | |
| 74695-9201 | 12 | 48 | 12 | 24.00 | 22.00 | 4.75 | 0.76 | |
| 74695-9206 | | | | | | | 1.27 | |
| 74695-7501 | | | | | | | 0.25 MAPS | |
| 74695-9501 | 25 | 100 | 25 | 50.00 | 18.00 | | 0.76 | |
| 74695-8506 | | | | | | | 1.27 | |
| 74695-6002 | | | | | | | 0.25 MAPS | |
| 74695-9002 | 10 | 40 | 10 | 20.00 | 18.00 | | 0.76 | |
| 74695-9007 | | | | | | | 1.27 | |
| 74695-6202 | | | | | | | 0.25 MAPS | |
| 74695-9202 | 12 | 48 | 12 | 24.00 | 22.00 | 6.25 | 0.76 | |
| 74695-9207 | | | | | | | 1.27 | |
| 74695-7502 | | | | | | | 0.25 MAPS | |
| 74695-8502 | 25 | 100 | 25 | 50.00 | 18.00 | | 0.76 | |
| 74695-8507 | | | | | | | 1.27 | |
| 74695-6003 | | | | | | | 0.25 MAPS | |
| 74695-9003 | 10 | 40 | 10 | 20.00 | 18.00 | | 0.76 | |
| 74695-9008 | | | | | | | 1.27 | |
| 74695-6203 | | | | | | | 0.25 MAPS | |
| 74695-9203 | 12 | 48 | 12 | 24.00 | 22.00 | 4.25 | 0.76 | |
| 74695-9208 | | | | | | | 1.27 | |
| 74695-7503 | | | | | | | 0.25 MAPS | |
| 74695-8503 | 25 | 100 | 25 | 50.00 | 18.00 | | 0.76 | |
| 74695-8508 | | | | | | | 1.27 | |
| 74695-6004 | | | | | | | 0.25 MAPS | |
| 74695-9004 | 10 | 40 | 10 | 20.00 | 18.00 | | 0.76 | |
| 74695-9009 | | | | | | | 1.27 | |
| 74695-6204 | | | | | | | 0.25 MAPS | |
| 74695-9204 | 12 | 48 | 12 | 24.00 | 22.00 | 5.15 | 0.76 | |
| 74695-9209 | | | | | | | 1.27 | |
| 74695-7504 | | | | | | | 0.25 MAPS | |
| 74695-8504 | 25 | 100 | 25 | 50.00 | 18.00 | | 0.76 | |
| 74695-8509 | | | | | | | 1.27 | |

| PART NUMBER | COLUMN | NUMBER OF SIGNAL PIN | NUMBER OF SHIELD | A | B | M | GOLD THICKNESS MICROMETER | TIN THICKNESS MICROMETER |
|-------------|--------|----------------------|------------------|-------|-------|------|---------------------------|--------------------------|
| 74695-1001 | | | | | | | 0.76 | |
| 74695-1006 | 10 | 40 | 10 | 20.00 | 18.00 | | 1.27 | |
| 74695-1201 | | | | | | | 0.76 | |
| 74695-1206 | 12 | 48 | 12 | 24.00 | 22.00 | 4.75 | 1.27 | |
| 74695-2501 | | | | | | | 0.76 | |
| 74695-2506 | 25 | 100 | 25 | 50.00 | 48.00 | | 1.27 | |
| 74695-1002 | | | | | | | 0.76 | |
| 74695-1007 | 10 | 40 | 10 | 20.00 | 18.00 | | 1.27 | |
| 74695-1202 | | | | | | | 0.76 | |
| 74695-1207 | 12 | 48 | 12 | 24.00 | 22.00 | 6.25 | 1.27 | |
| 74695-2502 | | | | | | | 0.76 | |
| 74695-2507 | 25 | 100 | 25 | 50.00 | 48.00 | | 1.27 | |
| 74695-1003 | | | | | | | 0.76 | |
| 74695-1008 | 10 | 40 | 10 | 20.00 | 18.00 | | 1.27 | |
| 74695-1203 | | | | | | | 0.76 | |
| 74695-1208 | 12 | 48 | 12 | 24.00 | 22.00 | 4.25 | 1.27 | |
| 74695-2503 | | | | | | | 0.76 | |
| 74695-2508 | 25 | 100 | 25 | 50.00 | 48.00 | | 1.27 | |
| 74695-1004 | | | | | | | 0.76 | |
| 74695-1009 | 10 | 40 | 10 | 20.00 | 18.00 | | 1.27 | |
| 74695-1204 | | | | | | | 0.76 | |
| 74695-1209 | 12 | 48 | 12 | 24.00 | 22.00 | 5.15 | 1.27 | |
| 74695-2504 | | | | | | | 0.76 | |
| 74695-2509 | 25 | 100 | 25 | 50.00 | 48.00 | | 1.27 | |

LEAD FREE
(FORMERLY TIN/LEAD)
CHART

LEAD FREE CHART

| | | | | | | | | | | |
|---|---------------------|--|----------------------|----------------------------|---------------------|---------------------|---|--|--|------------------|
| SEE SHEET 1 EC NO: UCP2013-0687 DRAWN BY: 2012/08/20 CHK: KIMOLFE 2012/11/28 APPR: SMILLER 2012/12/14 | QUALITY SYMBOLS | GENERAL TOLERANCES (UNLESS SPECIFIED) | | DIMENSION STYLE MM ONLY | | SCALE 2.5:1 | DESIGN UNITS METRIC | THIRD ANGLE PROJECTION | | |
| | | 4 PLACES ± --- ± --- | 3 PLACES ± --- ± --- | 2 PLACES ± --- ± --- | 1 PLACE ± --- ± --- | 0 PLACE ± --- ± --- | DRAWN BY: MOWANG DATE: 2001/04/11 | TITLE HSD SALES ASSEMBLY 5 ROW OPEN END BACKPLANE | | |
| | | ANGULAR ±1/2° | | | | | CHECKED BY: NMARTIN DATE: 2001/04/14 | APPROVED BY: CBIXLER DATE: 2001/04/14 | | |
| | | DRAFT WHERE APPLICABLE MUST REMAIN WITHIN DIMENSIONS | | SEE TABLE | | MATERIAL NO. | | DOCUMENT NO. SD-74695-002 | | SHEET NO. 3 OF 3 |