

## Excellent Integrated System Limited

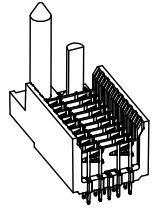
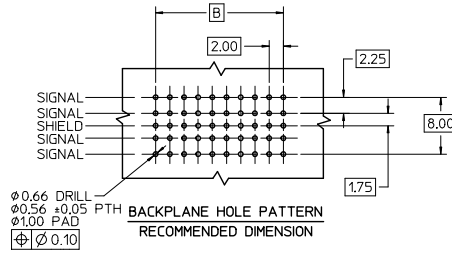
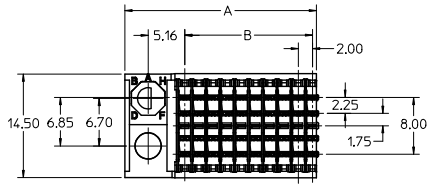
Stocking Distributor

Click to view price, real time Inventory, Delivery & Lifecycle Information:

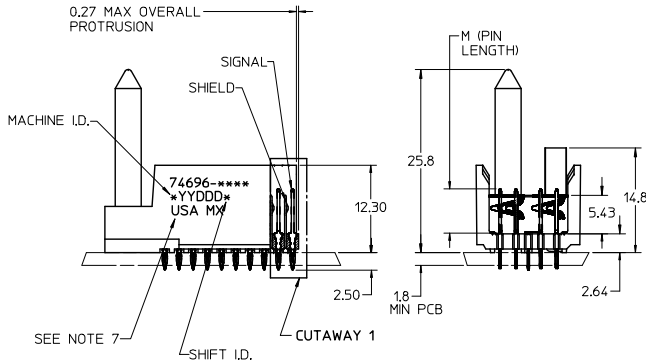
[Molex Connector Corporation](#)  
[0746961102](#)

For any questions, you can email us directly:

[sales@integrated-circuit.com](mailto:sales@integrated-circuit.com)



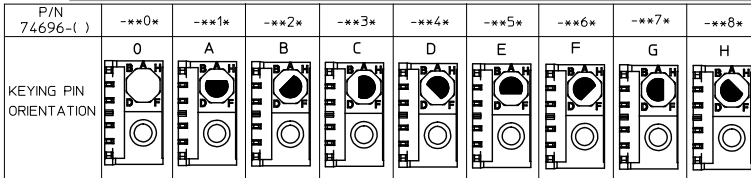
THE PRIMARY CARTON WITH A LABEL STATING "ELV AND RoHS COMPLIANT" IS LEAD FREE. CARTONS WITHOUT THIS LABEL MAY CONTAIN LEAD.



NOTES:

1. MATERIAL: HOUSING -LIQUID CRYSTAL POLYMER (LCP) GLASS-FILLED. UL 94 V-0. COLOR: BLACK. SIGNAL & SHIELD -COPPER ALLOY.
2. FINISHES: SELECTIVE GOLD (Au) ON CONTACT AREA. SELECTIVE MATTE TIN (Sn) ON PCB TAILS. NICKEL (Ni) OVERALL.
3. THIS PART CONFORMS TO MOLEX PRODUCT SPECIFICATION PS-74031-999.
4. FOR MIXED CONTACT MATING LENGTHS CONSULT MOLEX FOR AVAILABILITY.
5. FOR SPECIFIC PART NUMBER AND MATING INFORMATION REFER TO SHEET 2.
6. PACKAGE PER PK-74696-003.
7. EITHER MARK PART NUMBER AND DATE CODE APPROXIMATELY WHERE SHOWN OR PLACE LABEL ON THE TUBE.
8. THIS PART CONFORMS TO CLASS B REQUIREMENTS OF MOLEX COSMETIC SPECIFICATION PS-45499-002.
9. MAPS (MOLEX ADVANCED PLATING SYSTEM).

LEAD FREE CONVERSION EC NO: UCP2015-0687 DRAWN BY: 2012/08/24 CHKD/MO/LE: 2012/11/20 APPR:SM/LLR: 2012/12/14	QUALITY SYMBOLS ▽=0 ▽=0 ▽=0	GENERAL TOLERANCES (UNLESS SPECIFIED)		DIMENSION STYLE MM ONLY		SCALE 2.5:1	DESIGN UNITS METRIC	THIRD ANGLE PROJECTION
		4 PLACES ± --- ± ---		DRAWN BY: MOWANG DATE: 2001/07/23		TITLE HSD SALES ASSEMBLY ADVANCED MATE 5 ROW SIGNAL END BACKPLANE <b>molex</b> DOCUMENT NO. SD-74696-003 SHEET NO. 1 OF 2		
		3 PLACES ± --- ± ---		CHECKED BY: JLAURX DATE: 2001/10/12				
		2 PLACES ± --- ± ---		APPROVED BY: CBIXLER DATE: 2001/10/12				
1 PLACE ± --- ± ---		MATERIAL NO. SEE SHEET 2						
0 PLACE ± --- ± ---		ANGULAR ± 1/2°		DRAFT WHERE APPLICABLE MUST REMAIN WITHIN DIMENSIONS		THIS DRAWING CONTAINS INFORMATION THAT IS PROPRIETARY TO MOLEX INCORPORATED AND SHOULD NOT BE USED WITHOUT WRITTEN PERMISSION		



74696-\*\*\*

NUMBER OF COLUMNS/PLATING

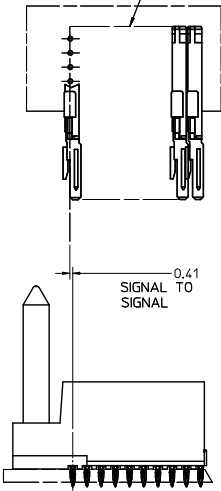
- 11 = 10 COLUMN MATTE TIN (FORMERLY TIN/LEAD)
- 26 = 25 COLUMN MATTE TIN (FORMERLY TIN/LEAD)
- 61 = 10 COLUMN MATTE TIN (MAPS)
- 76 = 25 COLUMN MATTE TIN (MAPS)
- 91 = 10 COLUMN MATTE TIN
- 86 = 25 COLUMN MATTE TIN

CONTACT LOAD (PIN LENGTH)

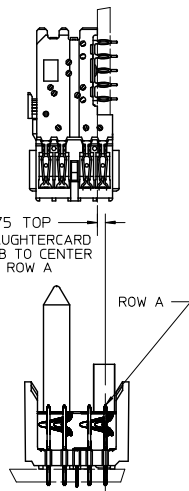
- 1 & 6 = 4.75
- 2 & 7 = 6.25
- 3 & 8 = 4.25
- 4 & 9 = 5.15

PART NUMBER	COLUMN	NUMBER OF SIGNAL PIN	NUMBER OF SHIELD	A	B	M	GOLD THICKNESS MICROMETER	TIN THICKNESS MICROMETER
74696-61*1	10	40	10	27.00	18.00	4.75	0.25 MAPS	0.76-152
74696-41*1							0.76	
74696-76*1							1.27	
74696-46*1	25	100	25	57.00	48.00	4.75	0.25 MAPS	
74696-66*1							0.76	
74696-61*2							1.27	
74696-41*2	10	40	10	27.00	18.00	6.25	0.25 MAPS	
74696-41*7							0.76	
74696-76*2							1.27	
74696-46*2	25	100	25	57.00	48.00	6.25	0.25 MAPS	
74696-66*2							0.76	
74696-66*7							1.27	
74696-61*3	10	40	10	27.00	18.00	4.25	0.25 MAPS	
74696-41*3							0.76	
74696-41*8							1.27	
74696-76*3	25	100	25	57.00	48.00	4.25	0.25 MAPS	
74696-46*3							0.76	
74696-46*8							1.27	
74696-61*4	10	40	10	27.00	18.00	5.15	0.25 MAPS	
74696-41*4							0.76	
74696-41*9							1.27	
74696-76*4	25	100	25	57.00	48.00	5.15	0.25 MAPS	
74696-46*4							0.76	
74696-46*9							1.27	

DAUGHTERCARD CONNECTOR SIDE



0.75 TOP DAUGHTERCARD PCB TO CENTER OF ROW A



SEE SHEET 1 EC NO: UCP2015-0687 2012/08/24 CHK: KIMOLFE 2012/11/20 APPR: SMILLER 2012/12/14	QUALITY SYMBOLS □=0 □=0 □=0	GENERAL TOLERANCES (UNLESS SPECIFIED)		DIMENSION STYLE		SCALE	DESIGN UNITS	THIRD ANGLE PROJECTION	
				MM ONLY		2.5:1	METRIC		
		4 PLACES ±	mm	INCH	DRAWN BY	DATE	TITLE HSD SALES ASSEMBLY ADVANCED MATE 5 ROW SIGNAL END BACKPLANE <b>molex</b> DOCUMENT NO. SD-74696-003 SHEET NO. 2 OF 2		
		3 PLACES ±			MOWANG	2001/07/23			
2 PLACES ±			CHECKED BY	DATE					
1 PLACE ±			JLAURX	2001/10/12					
0 PLACE ±			APPROVED BY	DATE					
			CIXLER	2001/10/12					
ANGULAR ±1/2°		MATERIAL NO.		DOCUMENT NO.					
DRAFT WHERE APPLICABLE MUST REMAIN WITHIN DIMENSIONS		SEE TABLE		SD-74696-003					
		SIZE		THIS DRAWING CONTAINS INFORMATION THAT IS PROPRIETARY TO MOLEX INCORPORATED AND SHOULD NOT BE USED WITHOUT WRITTEN PERMISSION					