

Excellent Integrated System Limited

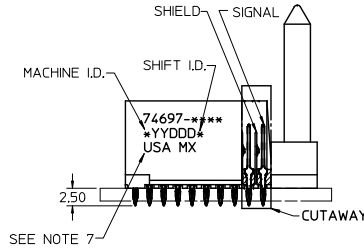
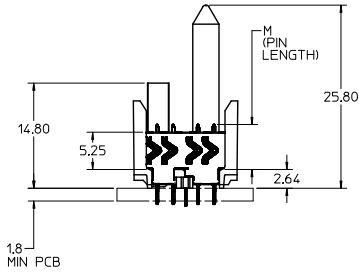
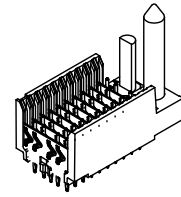
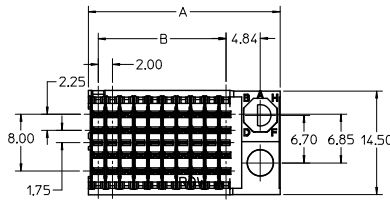
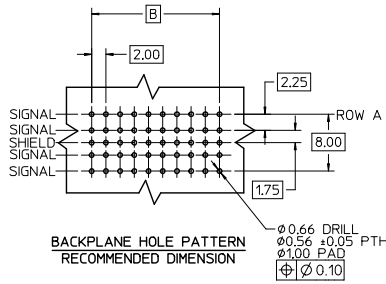
Stocking Distributor

Click to view price, real time Inventory, Delivery & Lifecycle Information:

[Molex Connector Corporation](#)
[0746971011](#)

For any questions, you can email us directly:

sales@integrated-circuit.com



NOTES:

1. MATERIAL: HOUSING -LIQUID CRYSTAL POLYMER (LCP) GLASS-FILLED, UL 94 V-0, COLOR BLACK. SIGNAL & SHIELD -COPPER ALLOY.
2. FINISHES: SELECTIVE GOLD (Au) ON CONTACT AREA. SELECTIVE MATTE TIN (Sn) ON PCB TAILS. NICKEL (Ni) OVERALL.
3. THIS PART CONFORMS TO MOLEX PRODUCT SPECIFICATION PS-74031-999.
4. FOR MIXED CONTACT MATING LENGTHS CONSULT MOLEX FOR AVAILABILITY.
5. FOR SPECIFIC PART NUMBER AND MATING INFORMATION REFER TO SHEET 2.
6. PACKAGE PER: PK-74696-003.
7. EITHER MARK PART NUMBER AND DATE CODE APPROXIMATELY WHERE SHOWN OR PLACE LABEL ON THE TUBE.
8. MAPS (MOLEX ADVANCED PLATING SYSTEM).

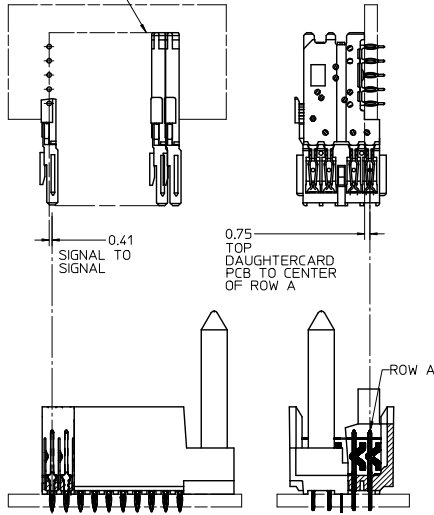
THE PRIMARY CARTON WITH A LABEL STATING "ELV AND RoHS COMPLIANT" IS LEAD FREE. CARTONS WITHOUT THIS LABEL MAY CONTAIN LEAD.

LEAD FREE CONVERSION EC NO: UCP-2015-0687 DRAWINGS: 2012/08/24 CHK: CHOMOLFE 2012/11/27 APPR: SMILLER 2012/12/14	QUALITY SYMBOLS ∇=0 ∇=0 ∇=0	GENERAL TOLERANCES (UNLESS SPECIFIED)		DIMENSION STYLE MM ONLY		SCALE 2.5:1	DESIGN UNITS METRIC	THIRD ANGLE PROJECTION			
		4 PLACES ± --- ± ---	3 PLACES ± --- ± ---	DRAWN BY MOWANG	DATE 2001/04/17	TITLE HSD SALES ASSEMBLY 5 ROW SHIELD END BACKPLANE					
		2 PLACES ± --- ± ---	1 PLACE ± --- ± ---	CHECKED BY NMARTIN	DATE 2001/04/20	molex					
		0 PLACE ± --- ± ---	ANGULAR ± 1/2°	APPROVED BY CBIXLER	DATE 2001/04/20	MATERIAL NO. SEE SHEET 3	DOCUMENT NO. SD-74697-002	SHEET NO. 1 OF 3			
DRAFT WHERE APPLICABLE MUST REMAIN WITHIN DIMENSIONS		THIS DRAWING CONTAINS INFORMATION THAT IS PROPRIETARY TO MOLEX INCORPORATED AND SHOULD NOT BE USED WITHOUT WRITTEN PERMISSION									

P/N 74697-()	---0-	---1-	---2-	---3-	---4-	---5-	---6-	---7-	---8-
KEYING PIN ORIENTATION									

74697-***

DAUGHTERCARD
CONNECTOR SIDE



NUMBER OF COLUMNS/PLATING

- 05 = 05 COLUMN MATTE TIN (FORMERLY TIN/LEAD)
- 10 = 10 COLUMN MATTE TIN (FORMERLY TIN/LEAD)
- 25 = 25 COLUMN MATTE TIN (FORMERLY TIN/LEAD)
- 55 = 05 COLUMN MATTE TIN (MAPS)
- 60 = 10 COLUMN MATTE TIN (MAPS)
- 75 = 25 COLUMN MATTE TIN (MAPS)
- 95 = 05 COLUMN MATTE TIN
- 90 = 10 COLUMN MATTE TIN
- 85 = 25 COLUMN MATTE TIN

CONTACT LOAD

- (PIN LENGTH)
- 1 & 6 = 4.75
- 2 & 7 = 6.25
- 3 & 8 = 4.25
- 4 & 9 = 5.15

LEAD FREE CONVERSION EC NO: UCP/2013-0687 DRAWING NO: 2012/08/24 CHK: KIMOLFE 2012/11/27 APPR: SMILLER 2012/12/14 DESCRIPTION REV	QUALITY SYMBOLS	GENERAL TOLERANCES (UNLESS SPECIFIED)	DIMENSION STYLE	SCALE	DESIGN UNITS	THIRD ANGLE PROJECTION																		
	∇=0 ∇=0 ∇=0	<table border="1"> <thead> <tr> <th></th> <th>mm</th> <th>INCH</th> </tr> </thead> <tbody> <tr> <td>4 PLACES</td> <td>±---</td> <td>±---</td> </tr> <tr> <td>3 PLACES</td> <td>±---</td> <td>±---</td> </tr> <tr> <td>2 PLACES</td> <td>±---</td> <td>±---</td> </tr> <tr> <td>1 PLACE</td> <td>±---</td> <td>±---</td> </tr> <tr> <td>0 PLACE</td> <td>±</td> <td>±</td> </tr> </tbody> </table>		mm	INCH	4 PLACES	±---	±---	3 PLACES	±---	±---	2 PLACES	±---	±---	1 PLACE	±---	±---	0 PLACE	±	±	MM ONLY	2.5:1	METRIC	DRAWN BY: MQWANG DATE: 2001/04/17 CHECKED BY: NMARTIN DATE: 2001/04/20 APPROVED BY: CBIXLER DATE: 2001/04/20
		mm	INCH																					
	4 PLACES	±---	±---																					
3 PLACES	±---	±---																						
2 PLACES	±---	±---																						
1 PLACE	±---	±---																						
0 PLACE	±	±																						
	ANGULAR ±1/2°	DRAFT WHERE APPLICABLE MUST REMAIN WITHIN DIMENSIONS	SEE SHEET 3	TITLE: HSD SALES ASSEMBLY 5 ROW SHIELD END BACKPLANE molex DOCUMENT NO. SD-74697-002		SHEET NO. 2 OF 3																		
			SIZE C	THIS DRAWING CONTAINS INFORMATION THAT IS PROPRIETARY TO MOLEX INCORPORATED AND SHOULD NOT BE USED WITHOUT WRITTEN PERMISSION																				

PART NUMBER	COLUMN	NUMBER OF SIGNAL PIN	NUMBER OF SHIELD	A	B	M	GOLD THICKNESS MICROMETER	TIN THICKNESS MICROMETER
74697-60*1	10	40	10	27.00	18.00	4.75	0.25 MAPS	0.76-1.52
74697-90*1							0.76	
74697-90*6							1.27	
74697-75*1	25	100	25	57.00	48.00		0.25 MAPS	
74697-85*1							0.76	
74697-85*6							1.27	
74697-55*2	5	20	5	17.00	8.00	6.25	0.25 MAPS	
74697-95*7							1.27	
74697-60*2	10	40	10	27.00	18.00		0.25 MAPS	
74697-90*2							0.76	
74697-90*7							1.27	
74697-75*2	25	100	25	57.00	48.00		0.25 MAPS	
74697-85*2						0.76		
74697-85*7						1.27		
74697-60*3	10	40	10	27.00	18.00	4.25	0.25 MAPS	
74697-90*3							0.76	
74697-90*8							1.27	
74697-75*3	25	100	25	57.00	48.00		0.25 MAPS	
74697-85*3							0.76	
74697-85*8							1.27	
74697-60*4	10	40	10	27.00	18.00	5.15	0.25 MAPS	
74697-90*4							0.76	
74697-90*9							1.27	
74697-75*4	25	100	25	57.00	48.00		0.25 MAPS	
74697-85*4							0.76	
74697-85*9							1.27	

LEAD FREE CHART

PART NUMBER	COLUMN	NUMBER OF SIGNAL PINS	NUMBER OF SHIELDS	A	B	M	Au (um) MIN THICKNESS	Sn (um) THICKNESS
74697-10*1	10	40	10	27.00	18.00	4.75	0.76	0.76-1.52
74697-10*6	25	100	25	57.00	48.00		1.27	
74697-25*1							0.76	
74697-25*6						1.27		
74697-05*7	5	20	5	17.00	8.00	6.25	1.27	
74697-10*2	10	40	10	27.00	18.00		0.76	
74697-10*7							1.27	
74697-25*2						0.76		
74697-25*7	25	100	25	57.00	48.00	4.25	1.27	
74697-10*3							0.76	
74697-10*8							1.27	
74697-25*3	25	100	25	57.00	48.00		0.76	
74697-25*8							1.27	
74697-10*4							0.76	
74697-10*9	10	40	10	27.00	18.00	5.15	1.27	
74697-25*4							0.76	
74697-25*9							1.27	

LEAD FREE (FORMERLY TIN/LEAD) CHART

SEE SHEET 1 EC NO: UCP2013-0687 2012/08/21 CHK:DWILFE 2012/11/27 APPR:SMILLER 2012/12/14 DESCRIPTION REV	QUALITY SYMBOLS	GENERAL TOLERANCES (UNLESS SPECIFIED)	DIMENSION STYLE	SCALE	DESIGN UNITS	THIRD ANGLE PROJECTION
	□=0 ▽=0 ▽=0	mm INCH 4 PLACES ± --- ± --- 3 PLACES ± --- ± --- 2 PLACES ± --- ± --- 1 PLACE ± --- ± --- 0 PLACE ± ±	MM ONLY	2.5:1	METRIC	DRAWN BY DATE MOWANG 2001/04/17 CHECKED BY DATE NMARTIN 2001/04/20 APPROVED BY DATE CBIXLER 2001/04/20
	ANGULAR ±1/2° DRAFT WHERE APPLICABLE MUST REMAIN WITHIN DIMENSIONS	MATERIAL NO. SEE TABLE	TITLE HSD SALES ASSEMBLY 5 ROW SHIELD END BACKPLANE molex DOCUMENT NO. SD-74697-002	SHEET NO. 3 OF 3		
	THIS DRAWING CONTAINS INFORMATION THAT IS PROPRIETARY TO MOLEX INCORPORATED AND SHOULD NOT BE USED WITHOUT WRITTEN PERMISSION					