

Excellent Integrated System Limited

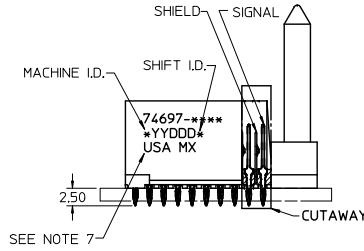
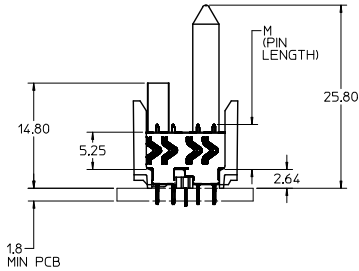
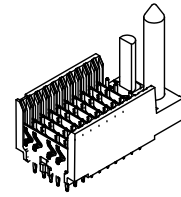
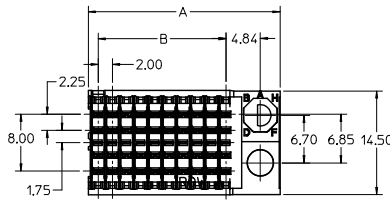
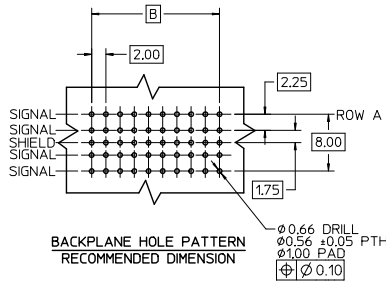
Stocking Distributor

Click to view price, real time Inventory, Delivery & Lifecycle Information:

[Molex Connector Corporation](#)
[0746971012](#)

For any questions, you can email us directly:

sales@integrated-circuit.com



NOTES:

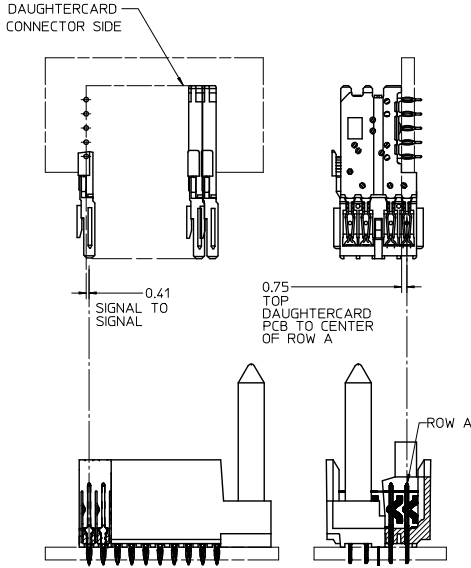
1. MATERIAL: HOUSING -LIQUID CRYSTAL POLYMER (LCP) GLASS-FILLED, UL 94 V-0, COLOR BLACK. SIGNAL & SHIELD -COPPER ALLOY.
2. FINISHES: SELECTIVE GOLD (Au) ON CONTACT AREA. SELECTIVE MATTE TIN (Sn) ON PCB TAILS. NICKEL (Ni) OVERALL.
3. THIS PART CONFORMS TO MOLEX PRODUCT SPECIFICATION PS-74031-999.
4. FOR MIXED CONTACT MATING LENGTHS CONSULT MOLEX FOR AVAILABILITY.
5. FOR SPECIFIC PART NUMBER AND MATING INFORMATION REFER TO SHEET 2.
6. PACKAGE PER: PK-74696-003.
7. EITHER MARK PART NUMBER AND DATE CODE APPROXIMATELY WHERE SHOWN OR PLACE LABEL ON THE TUBE.
8. MAPS (MOLEX ADVANCED PLATING SYSTEM).

THE PRIMARY CARTON WITH A LABEL STATING "ELV AND RoHS COMPLIANT" IS LEAD FREE. CARTONS WITHOUT THIS LABEL MAY CONTAIN LEAD.

LEAD FREE CONVERSION EC NO: UCP-2015-0687 DRAWINGS: 2012/08/24 CHK: CHOMOLFE 2012/11/27 APPR: SMILLER 2012/12/14	QUALITY SYMBOLS ∇=0 ∇=0 ∇=0	GENERAL TOLERANCES (UNLESS SPECIFIED)		DIMENSION STYLE MM ONLY		SCALE 2.5:1	DESIGN UNITS METRIC	THIRD ANGLE PROJECTION			
		4 PLACES ± --- ± ---	3 PLACES ± --- ± ---	2 PLACES ± --- ± ---	1 PLACE ± --- ± ---	0 PLACE ± --- ± ---	DRAWN BY MOWANG	DATE 2001/04/17	TITLE HSD SALES ASSEMBLY 5 ROW SHIELD END BACKPLANE		
		ANGULAR ±1/2°					CHECKED BY NMARTIN	DATE 2001/04/20	molex DOCUMENT NO. SD-74697-002		
		DRAFT WHERE APPLICABLE MUST REMAIN WITHIN DIMENSIONS					APPROVED BY CBIXLER	DATE 2001/04/20			

P/N 74697-()	---0-	---1-	---2-	---3-	---4-	---5-	---6-	---7-	---8-
KEYING PIN ORIENTATION									

74697-***



NUMBER OF COLUMNS/PLATING	CONTACT LOAD (PIN LENGTH)
05 = 05 COLUMN MATTE TIN (FORMERLY TIN/LEAD)	1 & 6 = 4.75
10 = 10 COLUMN MATTE TIN (FORMERLY TIN/LEAD)	2 & 7 = 6.25
25 = 25 COLUMN MATTE TIN (FORMERLY TIN/LEAD)	3 & 8 = 4.25
55 = 05 COLUMN MATTE TIN (MAPS)	4 & 9 = 5.15
60 = 10 COLUMN MATTE TIN (MAPS)	
75 = 25 COLUMN MATTE TIN (MAPS)	
95 = 05 COLUMN MATTE TIN	
90 = 10 COLUMN MATTE TIN	
85 = 25 COLUMN MATTE TIN	

LEAD FREE CONVERSION EC NO: UCP/2013-0687 DRAWING NO: 2012/08/24 CHKD: MOLFEE 2012/11/27 APPR: SMILLER 2012/12/14	QUALITY SYMBOLS ▽=0 ▽=0 ▽=0	GENERAL TOLERANCES (UNLESS SPECIFIED)		DIMENSION STYLE MM ONLY		SCALE 2.5:1	DESIGN UNITS METRIC	THIRD ANGLE PROJECTION	
		mm	INCH	DRAWN BY MQWANG	DATE 2001/04/17	TITLE HSD SALES ASSEMBLY 5 ROW SHIELD END BACKPLANE			
		4 PLACES ±	±	CHECKED BY NMARTIN	DATE 2001/04/20	molex			
		3 PLACES ±	±	APPROVED BY CBIXLER	DATE 2001/04/20				
2 PLACES ±	±	ANGULAR ±1/2°		MATERIAL NO.	DOCUMENT NO.	SHEET NO.			
1 PLACE ±	±	DRAFT WHERE APPLICABLE MUST REMAIN WITHIN DIMENSIONS		SEE SHEET 3	SD-74697-002	2 OF 3			
0 PLACE ±	±	THIS DRAWING CONTAINS INFORMATION THAT IS PROPRIETARY TO MOLEX INCORPORATED AND SHOULD NOT BE USED WITHOUT WRITTEN PERMISSION							

PART NUMBER	COLUMN	NUMBER OF SIGNAL PIN	NUMBER OF SHIELD	A	B	M	GOLD THICKNESS MICROMETER	TIN THICKNESS MICROMETER
74697-60*1	10	40	10	27.00	18.00	4.75	0.25 MAPS	0.76-1.52
74697-90*1							0.76	
74697-90*6							1.27	
74697-75*1	25	100	25	57.00	48.00	4.75	0.25 MAPS	0.76-1.52
74697-85*1							0.76	
74697-85*6							1.27	
74697-55*2	5	20	5	17.00	8.00	6.25	0.25 MAPS	0.76-1.52
74697-95*7							1.27	
74697-60*2							0.25 MAPS	
74697-90*2	10	40	10	27.00	18.00	6.25	0.76	0.76-1.52
74697-90*7							1.27	
74697-75*2							0.25 MAPS	
74697-85*2	25	100	25	57.00	48.00	6.25	0.76	0.76-1.52
74697-85*7							1.27	
74697-60*3							0.25 MAPS	
74697-90*3	10	40	10	27.00	18.00	4.25	0.76	0.76-1.52
74697-90*8							1.27	
74697-75*3							0.25 MAPS	
74697-85*3	25	100	25	57.00	48.00	4.25	0.76	0.76-1.52
74697-85*8							1.27	
74697-60*4							0.25 MAPS	
74697-90*4	10	40	10	27.00	18.00	5.15	0.76	0.76-1.52
74697-90*9							1.27	
74697-75*4							0.25 MAPS	
74697-85*4	25	100	25	57.00	48.00	5.15	0.76	0.76-1.52
74697-85*9							1.27	
74697-60*5							0.25 MAPS	

LEAD FREE CHART

PART NUMBER	COLUMN	NUMBER OF SIGNAL PINS	NUMBER OF SHIELDS	A	B	M	Au (um) MIN THICKNESS	Sn (um) THICKNESS
74697-10*1	10	40	10	27.00	18.00	4.75	0.76	0.76-1.52
74697-10*6	25	100	25	57.00	48.00		1.27	
74697-25*1							0.76	
74697-25*6						1.27		
74697-05*7	5	20	5	17.00	8.00	6.25	1.27	0.76-1.52
74697-10*2	10	40	10	27.00	18.00		0.76	
74697-10*7							1.27	
74697-25*2						0.76		
74697-25*7	25	100	25	57.00	48.00	6.25	1.27	0.76-1.52
74697-10*3							0.76	
74697-10*8							1.27	
74697-25*3	25	100	25	57.00	48.00	4.25	0.76	0.76-1.52
74697-25*8							1.27	
74697-10*4							0.76	
74697-10*9	10	40	10	27.00	18.00	5.15	1.27	0.76-1.52
74697-25*4							0.76	
74697-25*9							1.27	

LEAD FREE (FORMERLY TIN/LEAD) CHART

SEE SHEET 1 EC NO: UCP2013-0687 2012/08/21 CHK:DWILFE 2012/11/27 APPR:SMILLER 2012/12/14	QUALITY SYMBOLS 	GENERAL TOLERANCES (UNLESS SPECIFIED)		DIMENSION STYLE MM ONLY		SCALE 2.5:1	DESIGN UNITS METRIC	THIRD ANGLE PROJECTION
		4 PLACES ± --- ± ---	DRAWN BY MOWANG	DATE 2001/04/17	TITLE HSD SALES ASSEMBLY 5 ROW SHIELD END BACKPLANE			
		3 PLACES ± --- ± ---	CHECKED BY NMARTIN	DATE 2001/04/20				
		2 PLACES ± --- ± ---	APPROVED BY CBIXLER	DATE 2001/04/20	MATERIAL NO. SEE TABLE	DOCUMENT NO. SD-74697-002	SHEET NO. 3 OF 3	
1 PLACE ± --- ± ---	ANGULAR ± 1/2°		DRAFT WHERE APPLICABLE MUST REMAIN WITHIN DIMENSIONS					
0 PLACE ± --- ± ---	THIS DRAWING CONTAINS INFORMATION THAT IS PROPRIETARY TO MOLEX INCORPORATED AND SHOULD NOT BE USED WITHOUT WRITTEN PERMISSION							