

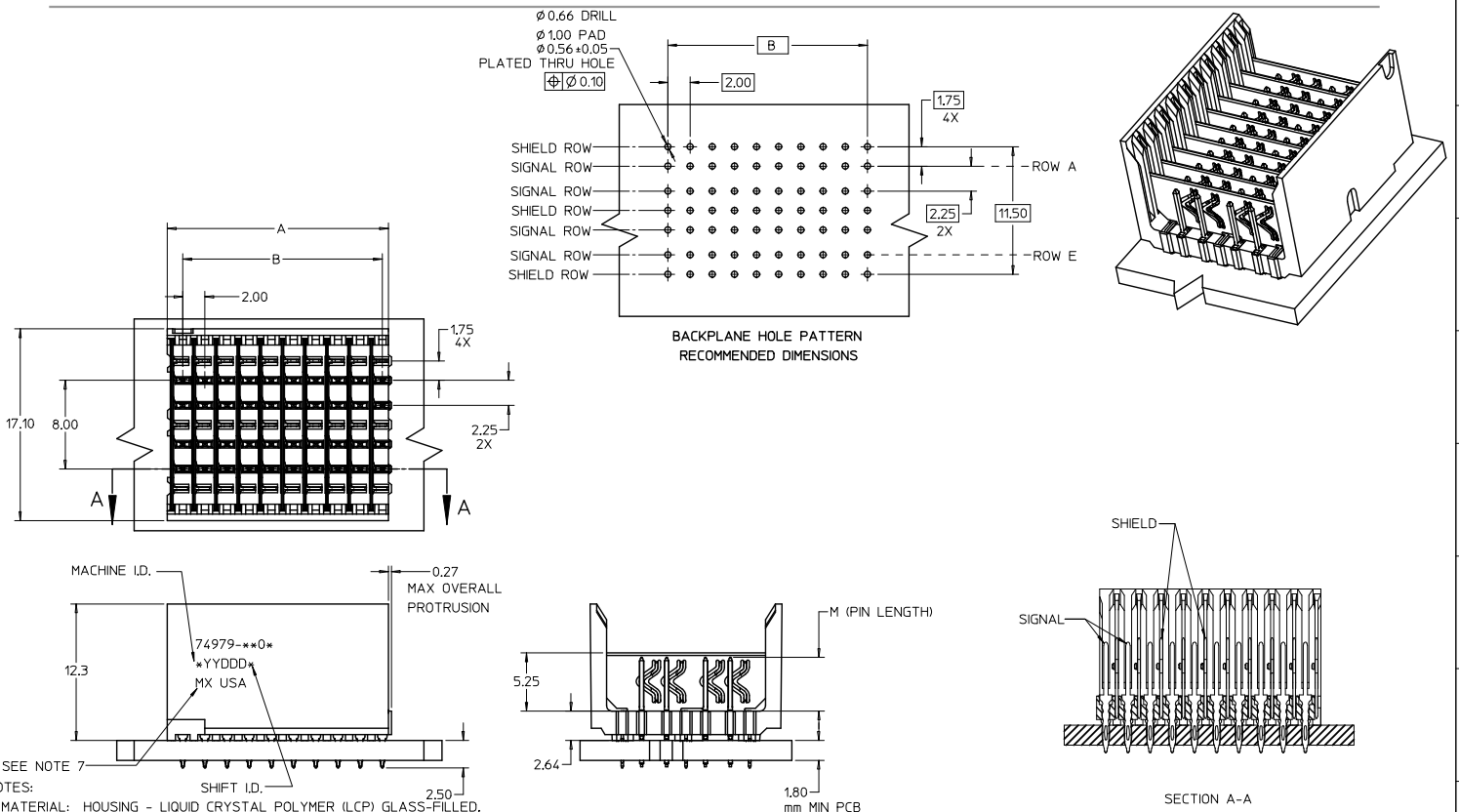
## Excellent Integrated System Limited

Stocking Distributor

Click to view price, real time Inventory, Delivery & Lifecycle Information:

[Molex Connector Corporation](#)  
[0749791006](#)

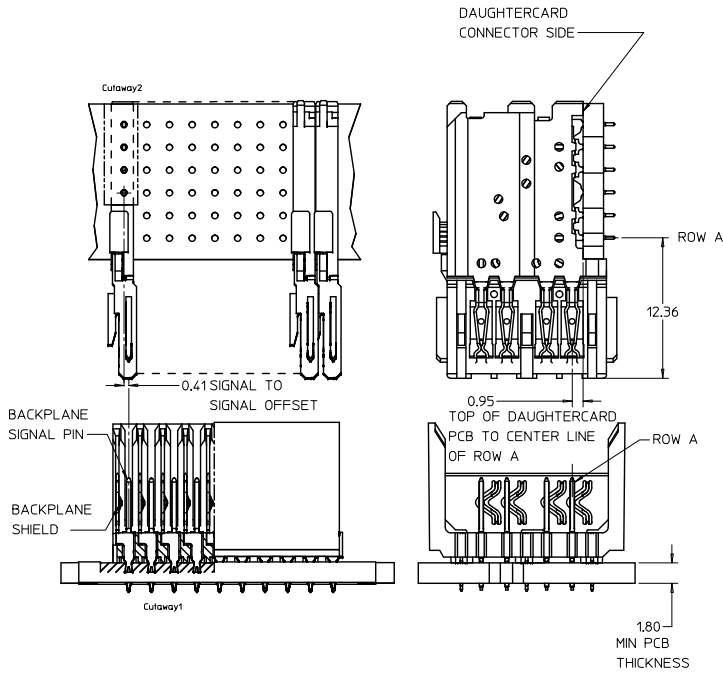
For any questions, you can email us directly:  
[sales@integrated-circuit.com](mailto:sales@integrated-circuit.com)



- NOTES:
- MATERIAL: HOUSING - LIQUID CRYSTAL POLYMER (LCP) GLASS-FILLED, UL 94V-0, COLOR - BLACK, SIGNAL AND SHIELD - HIGH PERFORMANCE COPPER ALLOY.
  - FINISHES:  
CONTACT AREA: SELECTIVE GOLD (Au)  
PCB TAILS: SELECTIVE TIN/LEAD (Sn/Pb) OR SELECTIVE MATTE TIN (Sn) NICKEL (Ni) OVERALL.
  - THIS PART CONFORMS TO MOLEX PRODUCT SPECIFICATION PS-74031-999.
  - FOR MIXED CONTACT MATING LENGTHS CONSULT MOLEX FOR AVAILABILITY.
  - FOR SPECIFIC PART NUMBER AND MATING INFORMATION REFER TO SHEET 2.
  - PACKAGE PER PK-74057-003 FOR 10 & 25 COLUMN, PACKAGE PER PK-70873-0934 FOR THE 9 COLUMN CONNECTOR.
  - EITHER MARK PART NUMBER AND DATE CODE APPROXIMATELY WHERE SHOWN OR PLACE LABEL ON TUBE.
  - MAPS (MOLEX ADVANCED PLATING SYSTEM).

THE PRIMARY CARTON WITH A LABEL STATING "ELV AND RoHS COMPLIANT" IS LEAD FREE. CARTONS WITHOUT THIS LABEL MAY CONTAIN LEAD.

<b>LEAD FREE CONVERSION</b> EC NO: UCP2015-0687 DRAWN BY: DRW/MOLFE CHECKED BY: CHK/SYANG APPROVED BY: APPR/SMLLR DATE: 2012/08/24 DATE: 2012/08/24 DATE: 2012/12/14	<b>QUALITY SYMBOLS</b> ∇=0 ∇=0 ∇=0	<b>GENERAL TOLERANCES (UNLESS SPECIFIED)</b>		<b>DIMENSION STYLE</b> MM ONLY		SCALE 4:1	DESIGN UNITS METRIC	THIRD ANGLE PROJECTION		
		4 PLACES ±	---	---	DRAWN BY	DATE	HSD 6 ROW OPEN END BACKPLANE SALES DRAWING SD-74979-010 SHEET NO. 1 OF 2			
		3 PLACES ±	---	---	CHECKED BY	DATE				
		2 PLACES ±	0.25	---	SREED	2002/05/03				
1 PLACE ±	0.38	---	APPROVED BY	DATE						
0 PLACE ±	---	---	CBIXLER	2002/05/03	MATERIAL NO.		DOCUMENT NO.		SIZE C	
ANGULAR ±---°		DRAFT WHERE APPLICABLE MUST REMAIN WITHIN DIMENSIONS		SEE TABLE		THIS DRAWING CONTAINS INFORMATION THAT IS PROPRIETARY TO MOLEX INCORPORATED AND SHOULD NOT BE USED WITHOUT WRITTEN PERMISSION				



PART NUMBER	COLUMN	NUMBER OF SIGNAL PIN	NUMBER OF SHIELD	A	B	M	GOLD THICKNESS MICROMETER	TIN THICKNESS MICROMETER
74979-6901	9	36	9	18.00	16.00	4.75	0.25 MAPS	0.76
74979-0901							1.27	
74979-0906							0.76	
74979-5906							1.27	
74979-6001	10	40	10	20.00	18.00	4.75	0.25 MAPS	0.76
74979-1001							1.27	
74979-1006							0.76	
74979-9001							1.27	
74979-9006	25	100	10	50.00	48.00	6.25	0.25 MAPS	0.76
74979-7001							1.27	
74979-2501							0.76	
74979-2506							1.27	
74979-8501	9	36	9	18.00	16.00	5.15	0.25 MAPS	0.76
74979-8506							1.27	
74979-6902							0.76	
74979-0902							1.27	
74979-0907	10	40	10	20.00	18.00	6.25	0.25 MAPS	0.76
74979-9902							1.27	
74979-9907							0.76	
74979-6002							1.27	
74979-1002	25	100	10	50.00	48.00	6.25	0.25 MAPS	0.76
74979-1007							1.27	
74979-9002							0.76	
74979-9007							1.27	
74979-7003	9	36	9	18.00	16.00	5.15	0.25 MAPS	0.76
74979-2503							1.27	
74979-2508							0.76	
74979-8503							1.27	
74979-8508	10	40	10	20.00	18.00	6.25	0.25 MAPS	0.76
74979-6903							1.27	
74979-0903							0.76	
74979-9903							1.27	
74979-9908	25	100	10	50.00	48.00	6.25	0.25 MAPS	0.76
74979-1004							1.27	
74979-1009							0.76	
74979-9004							1.27	
74979-9009	9	36	9	18.00	16.00	5.15	0.25 MAPS	0.76
74979-7004							1.27	
74979-2504							0.76	
74979-2509							1.27	
74979-8504	10	40	10	20.00	18.00	6.25	0.25 MAPS	0.76
74979-8509							1.27	
74979-6904							0.76	
74979-0904							1.27	
74979-9904	25	100	10	50.00	48.00	6.25	0.25 MAPS	0.76
74979-1004							1.27	
74979-1009							0.76	
74979-9004							1.27	
74979-9009	9	36	9	18.00	16.00	5.15	0.25 MAPS	0.76
74979-7004							1.27	
74979-2504							0.76	
74979-2509							1.27	
74979-8504	10	40	10	20.00	18.00	6.25	0.25 MAPS	0.76
74979-8509							1.27	
74979-6904							0.76	
74979-0904							1.27	

**MATERIAL NUMBER ASSIGNMENT**

74979-\*\*\* \*\*  
SEE TABLE

- NUMBER OF COLUMNS/PLATING
- 10 = 10 COLUMN TIN (FORMERLY TIN LEAD)
  - 25 = 25 COLUMN TIN (FORMERLY TIN LEAD)
  - 09 = 9 COLUMN TIN (FORMERLY TIN LEAD)
  - 90 = 10 COLUMN MATTE TIN
  - 85 = 25 COLUMN MATTE TIN
  - 99 = 9 COLUMN MATTE TIN
  - 60 = 10 COLUMN MATTE TIN (MAPS)
  - 70 = 25 COLUMN MATTE TIN (MAPS)
  - 69 = 9 COLUMN MATTE TIN (MAPS)

SEE SHEET 1 EC NO: UCF2013-0687 DRWINGMULFE 2012/08/24 CHKOSYANG 2012/08/24 APPRSMILLER 2012/7/14 REV	QUALITY SYMBOLS ∇=0 ∇=0 ∇=0	GENERAL TOLERANCES (UNLESS SPECIFIED) mm INCH 4 PLACES ± --- ± --- 3 PLACES ± --- ± --- 2 PLACES ± 0.25 ± --- 1 PLACE ± 0.38 ± --- 0 PLACE ± ±	DIMENSION STYLE MM ONLY	SCALE 4:1	DESIGN UNITS METRIC	THIRD ANGLE PROJECTION	
		DRAWN BY NMART IN DATE 2002/05/03	CHECKED BY SREED DATE 2002/05/03	APPROVED BY CBIXLER DATE 2002/05/03	MATERIAL NO. SEE TABLE	DOCUMENT NO. SD-74979-010	SHEET NO. 2 OF 2
		DRAFT WHERE APPLICABLE MUST REMAIN WITHIN DIMENSIONS					
		THIS DRAWING CONTAINS INFORMATION THAT IS PROPRIETARY TO MOLEX INCORPORATED AND SHOULD NOT BE USED WITHOUT WRITTEN PERMISSION					