

Excellent Integrated System Limited

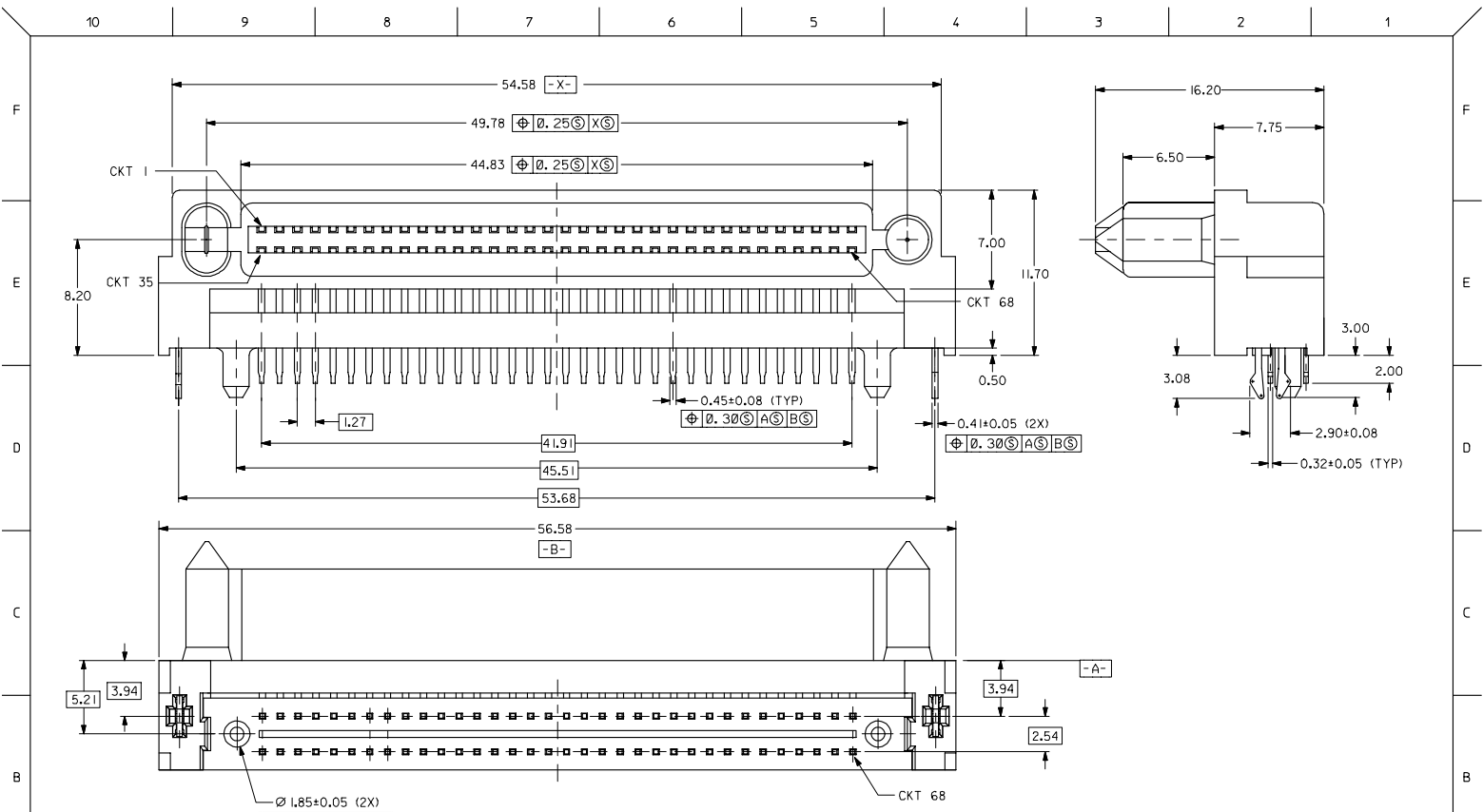
Stocking Distributor

Click to view price, real time Inventory, Delivery & Lifecycle Information:

[Molex Connector Corporation](#)
[0875378818](#)

For any questions, you can email us directly:

sales@integrated-circuit.com



PART NO. (PACKED IN CARTON)	PART NO. (PACKED IN BIN)	CKT SIZE	CONTACTS LUBRICATION
87537-8818 Δ	87537-8838	68	YES
87537-8811	87537-8831	68	NIL

OBS TIN/LEAD P/N
 EC NO: S2006-0729
 DRAWN BY: DRWMLONG
 CHKD BY: CHKSJONG
 APPR/KLING: 2006/07/28

QUALITY SYMBOLS	GENERAL TOLERANCES (UNLESS SPECIFIED)	
	mm	INCH
$\nabla=0$	4 PLACES \pm ---	\pm ---
$\nabla=0$	3 PLACES \pm ---	\pm ---
	2 PLACES ± 0.25	\pm ---
	1 PLACE \pm ---	\pm ---
	ANGULAR $\pm 3^\circ$	

DRAFT WHERE APPLICABLE MUST REMAIN WITHIN DIMENSIONS

DIMENSION STYLE		SCALE	DESIGN UNITS	THIRD ANGLE PROJECTION
MM ONLY		NTS	METRIC	
DRAWN BY: KCLING	DATE: 1995/04/07			
CHECKED BY: SKTOH	DATE: 1995/07/04			
APPROVED BY: GMS	DATE: 1995/07/04			
MATERIAL NO. SEE TABLE	DOCUMENT NO. SD-87537-6811			

TITLE: EBB1, RECEPTACLE, CONN. 1.27MM CTR, 68 CKTS, BTB BLIND-MATE, R/A
 MOLEX INCORPORATED
 SHEET NO. 1 OF 2
 THIS DRAWING CONTAINS INFORMATION THAT IS PROPRIETARY TO MOLEX INCORPORATED AND SHOULD NOT BE USED WITHOUT WRITTEN PERMISSION

10 9 8 7 6 5 4 3 2 1

F

E

D

C

B

A

F

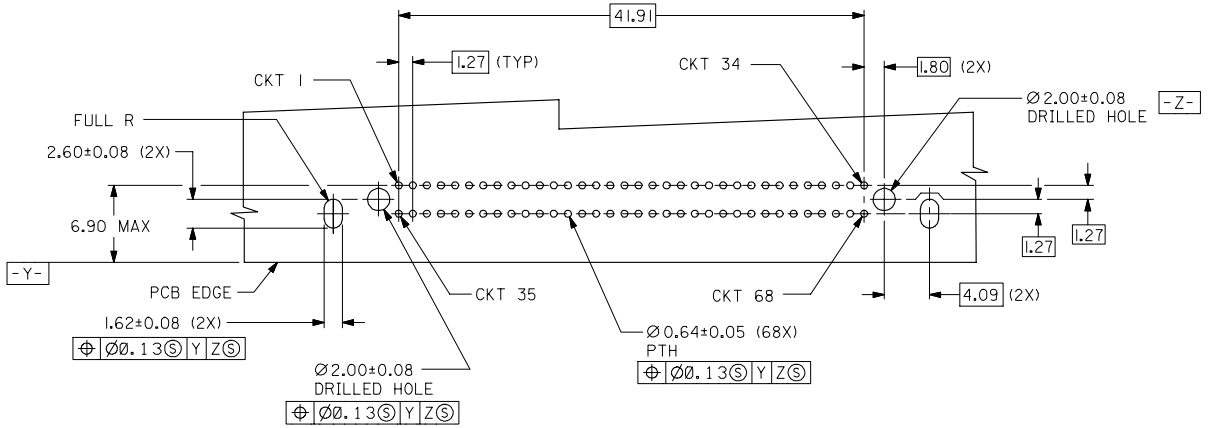
E

D

C

B

A



RECOMMENDED PC BOARD LAYOUT COMPONENT SIDE

NOTES:

- 1 MATERIALS:
HOUSING- LCP, 30% GLASS FILLED, UL94V-0, BLACK.
TERMINALS- PHOSPHOR BRONZE.
- 2 PLATING:
0.76µm MIN. GOLD IN SELECTIVE CONTACT AREA AND
2.54µm MIN. TIN IN SOLDER TAIL AREA, BOTH
OVER 1.27µm MIN. NICKEL.
- RECOMMENDED P.C. BOARD THICKNESS IS 1.57+/-0.13MM.
- 4 CIRCUIT #58 TO BE RECESSED 0.50mm BEHIND
ALL OTHER CONTACTS.
- PART IS LUBRICATED AT TERMINAL CONTACTS
TO MINIMISE UNMATE FORCE.

OBS TIN/LEAD P/N EC NO: S2006-0729 2006/07/27 DRAWN/CHKD/APP/REV M/MLONG C/KD/S/ONG A/P/P/K/C/L/I/N/G 2006/07/28	QUALITY SYMBOLS ▽=0 ▽=0	GENERAL TOLERANCES (UNLESS SPECIFIED)		DIMENSION STYLE MM ONLY		SCALE NTS	DESIGN UNITS METRIC	THIRD ANGLE PROJECTION	
		4 PLACES ± --- ± ---	3 PLACES ± --- ± ---	2 PLACES ± 0.25 ± ---	1 PLACE ± --- ± ---	DRAWN BY KCL/ING	DATE 1995/04/07		TITLE EBB1, RECEPTACLE, CONN. 1.27MM CTR, 68 CKTS, BTB BLIND-MATE, R/A
		ANGULAR ± 3 °				CHECKED BY SKT/0H	DATE 1995/07/04		MOLEX INCORPORATED
		DRAFT WHERE APPLICABLE MUST REMAIN WITHIN DIMENSIONS				APPROVED BY GMS	DATE 1995/07/04		
						DOCUMENT NO. SD-87537-6811	SHEET NO. 2 OF 2		
THIS DRAWING CONTAINS INFORMATION THAT IS PROPRIETARY TO MOLEX INCORPORATED AND SHOULD NOT BE USED WITHOUT WRITTEN PERMISSION									

9 8 7 6 5 4 3 2 1