



**Distributor of Molex Connector Corporation: Excellent Integrated System Limited**  
Datasheet of 0940304930 - Connector Quick Connect Receptacle 16-24 AWG 0.110"  
(2.79mm) Crimp

Contact us: [sales@integrated-circuit.com](mailto:sales@integrated-circuit.com) Website: [www.integrated-circuit.com](http://www.integrated-circuit.com)

---

## **Excellent Integrated System Limited**

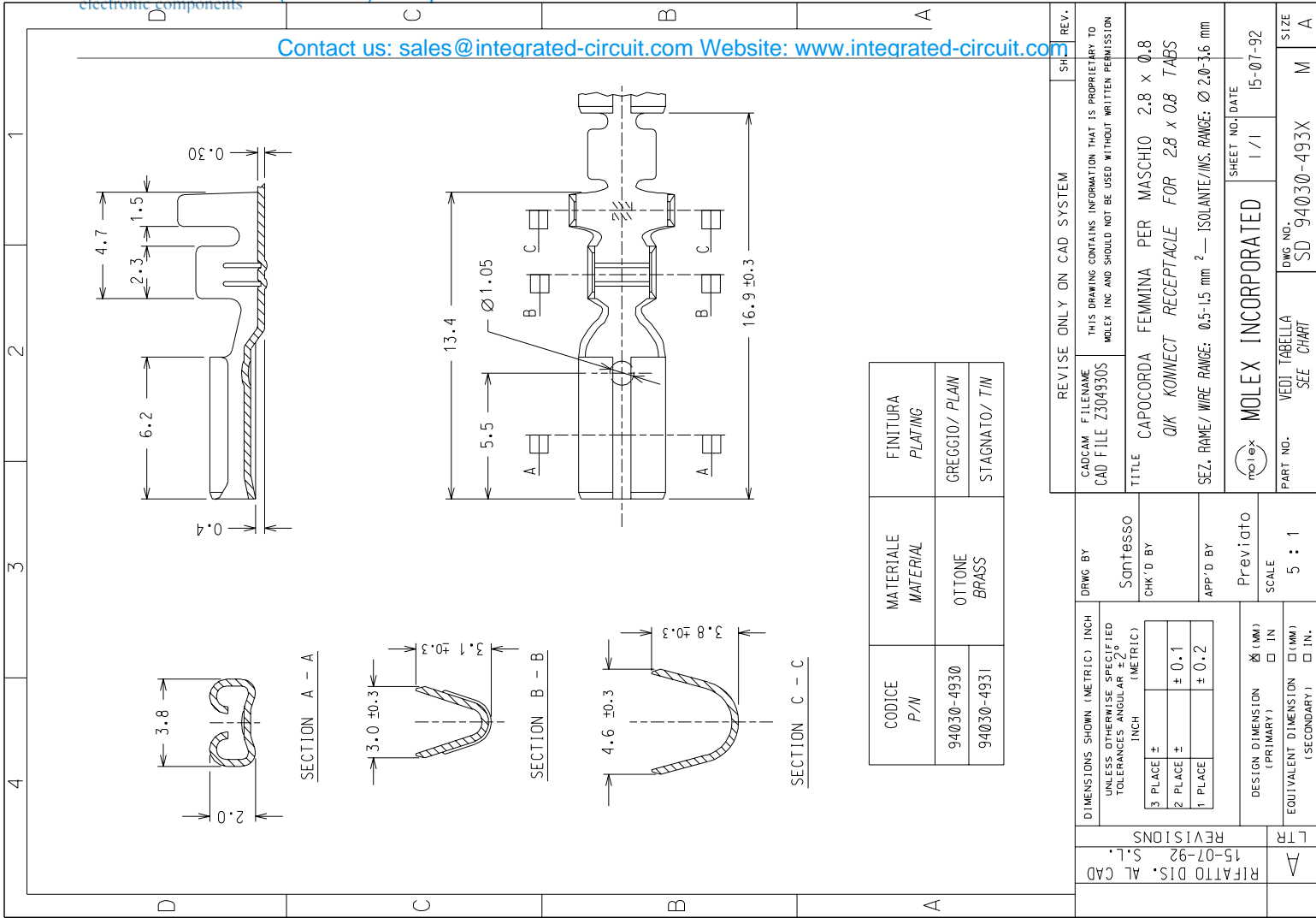
Stocking Distributor

Click to view price, real time Inventory, Delivery & Lifecycle Information:

[Molex Connector Corporation](#)  
[0940304930](#)

For any questions, you can email us directly:  
[sales@integrated-circuit.com](mailto:sales@integrated-circuit.com)

Contact us: [sales@integrated-circuit.com](mailto:sales@integrated-circuit.com) Website: [www.integrated-circuit.com](http://www.integrated-circuit.com)



CODICE P/N	MATERIALE MATERIAL	FINITURA PLATING
94030-4930	OTTONE BRASS	GREGGIO/ PLAIN
94030-4931		STAGNATO/ TIN

REVISIONS		REV.	SH.
1	15-07-92		
2			
3			
4			
5			

DRWG BY	Sontesso	CAD/CAM FILENAME	Z304930S
CHK'D BY		CAD FILE	Z304930S
APP'D BY	Previgto	THIS DRAWING CONTAINS INFORMATION THAT IS PROPRIETARY TO MOLEX INC AND SHOULD NOT BE USED WITHOUT WRITTEN PERMISSION	
SCALE	5 : 1	TITLE	CAPOCODA FEMMINA PER MASCHIO 2.8 x 0.8 QIK CONNECT RECEPTACLE FOR 2.8 x 0.8 TABS
DESIGN DIMENSION (PRIMARY)	<input checked="" type="checkbox"/> (MM) <input type="checkbox"/> IN	SEZ. RAME/ WIRE RANGE:	0.5-1.5 mm <sup>2</sup> — ISOLANTE/INS. RANGE: Ø 2.0-3.6 mm
EQUIVALENT DIMENSION (SECONDARY)	<input type="checkbox"/> (MM) <input type="checkbox"/> IN.	MOLEX INCORPORATED	
		PART NO.	VEDI TABELLA SEE CHART
		DWG NO.	SD 94030-493X
		SIZE	M
		SHEET NO./DATE	1 / 1 15-07-92