

Excellent Integrated System Limited

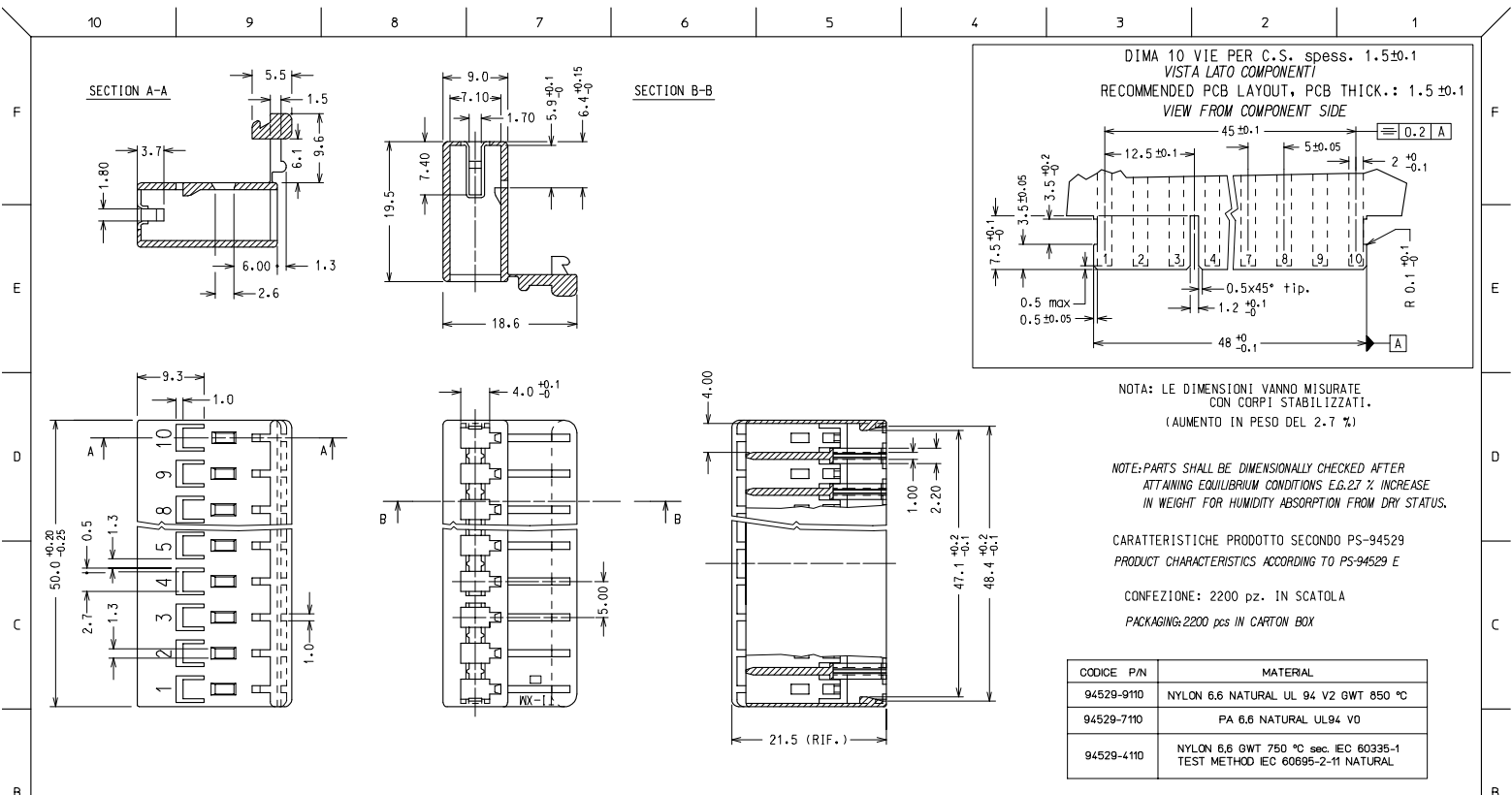
Stocking Distributor

Click to view price, real time Inventory, Delivery & Lifecycle Information:

[Molex Connector Corporation](#)
[0945294110](#)

For any questions, you can email us directly:

sales@integrated-circuit.com



NOTA: LE DIMENSIONI VANNO MISURATE CON CORPI STABILIZZATI. (AUMENTO IN PESO DEL 2.7 %)

NOTE: PARTS SHALL BE DIMENSIONALLY CHECKED AFTER ATTAINING EQUILIBRIUM CONDITIONS E.G. 27 % INCREASE IN WEIGHT FOR HUMIDITY ABSORPTION FROM DRY STATUS.

CARATTERISTICHE PRODOTTO SECONDO PS-94529 PRODUCT CHARACTERISTICS ACCORDING TO PS-94529 E

CONFEZIONE: 2200 pz. IN SCATOLA PACKAGING: 2200 pcs in CARTON BOX

CODICE P/N	MATERIAL
94529-9110	NYLON 6.6 NATURAL UL 94 V2 8WT 850 °C
94529-7110	PA 6.6 NATURAL UL94 V0
94529-4110	NYLON 6.6 GWT 750 °C sec. IEC 60335-1 TEST METHOD IEC 60695-2-11 NATURAL

EC NO: Z2007-0038 DRWN: SBARBER/2006/09/20 CHKD: RSANDANG/2006/09/20 APPR: FBISELLO/2006/09/25		SPQ: 2200 pz. Descr. Std: HSG FOR FORK TERMINAL 10 CKT.		SCALE: 2:1 DESIGN UNITS: METRIC DIMENSION STYLE: MM ONLY	FIRST ANGLE PROJECTION REVISE ON CAD ONLY
QUALITY SYMBOLS 0 0		GENERAL TOLERANCES (UNLESS SPECIFIED) 4 PLACES ± --- ± --- 3 PLACES ± --- ± --- 2 PLACES ± 0.10 ± --- 1 PLACE ± 0.2 ± --- ANGULAR ± 2 °		TITLE: 10 CKT HOUSING FOR STRAIGHT FORK TERMINAL MOLEX INCORPORATED	
DRAFT WHERE APPLICABLE MUST REMAIN WITHIN DIMENSIONS		APPROVED BY: RMARTUCC DATE: 1999/01/11 CHECKED BY: SSORATO DATE: 1999/01/11		MATERIAL NO.: SEE TABLE DOCUMENT NO.: SD-94529-021 SHEET NO.: 1 OF 1	
THIS DRAWING CONTAINS INFORMATION THAT IS PROPRIETARY TO MOLEX INCORPORATED AND SHOULD NOT BE USED WITHOUT WRITTEN PERMISSION		A3		A3	