



Distributor of Molex Connector Corporation: Excellent Integrated System Limited
Datasheet of 0945360100 - Connector Quick Connect Receptacle 16-24 AWG 0.187"
(4.75mm) Crimp

Contact us: sales@integrated-circuit.com Website: www.integrated-circuit.com

Excellent Integrated System Limited

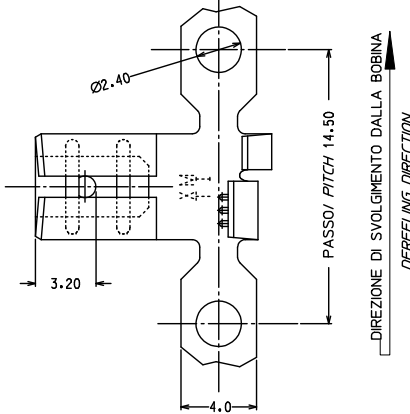
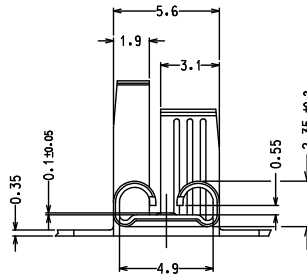
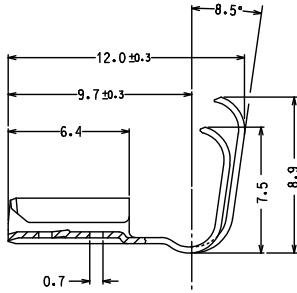
Stocking Distributor

Click to view price, real time Inventory, Delivery & Lifecycle Information:

[Molex Connector Corporation](#)
[0945360100](#)

For any questions, you can email us directly:
sales@integrated-circuit.com

Contact us: sales@integrated-circuit.com Website: www.integrated-circuit.com



CODICE	MATERIALE	FINITURA
P/N	MATERIAL	PLATING
94536-0100	OTTONE	GREGGIO / PLAIN
94536-0101	BRASS	STAGNATO / TIN PLATED

SEZ. DI AGGRAFFAGGIO : 0.5 ↔ 1.5 mm²
 Ø ISOLANTE : 2.0 ↔ 3.6 mm

WIRE RANGE : 0.5 ↔ 1.5 mm²
 Ø INSULATION : 2.0 ↔ 3.6 mm

IMBALLO: IN BOBINE CON CARTA INTERMEDIA,
 Nr. 3 BOBINE PER SCATOLA

PACKAGING: ON REELS WITH INTERLEAVING PAPER,
 Nr. 3 REELS PER BOX

S.P.Q. : 9000 pz.

S.P.Q. : 9000 pcs.

Std. Descr. : FEM TERM 4.8/0.8 RA BRS UNPL 0.5-1.5
 Std. Descr. : FEM TERM 4.8/0.8 RA BRS TIN 0.5-1.5

ADD MATERIAL NBR. IEC NO: Z2005-0074 DRMNLSANTISS 2004/11/18 CHIKDARSANDANO 2004/11/18 APPERLEZUIN 2004/11/19 B1	QUALITY SYMBOLS ▽=0 ▽=0	GENERAL TOLERANCES (UNLESS SPECIFIED)		DIMENSION STYLE		SCALE	DESIGN UNITS	FIRST ANGLE PROJECTION
		mm	INCH	MM ONLY		5:1	METRIC	
		4 PLACES ± ---	± ---	DRAWN BY	DATE	TITLE		
		3 PLACES ± ---	± ---	LSANTESS	1996/09/18	FLAG FEMALE TERMINAL FOR 4.8 X 0.8 TABS		
2 PLACES ± 0.10	± ---	CHECKED BY	DATE	APPROVED BY		DATE	MOLEX INCORPORATED	
1 PLACE ± 0.2	± ---	MPREVIAT	1996/09/18	MATERIAL NO.		DOCUMENT NO.		
ANGULAR ± 2 °		DRAFT WHERE APPLICABLE MUST REMAIN WITHIN DIMENSIONS		SEE TABLE	SD-94536-002	SHEET NO.		
				SIZE A3		THIS DRAWING CONTAINS INFORMATION THAT IS PROPRIETARY TO MOLEX INCORPORATED AND SHOULD NOT BE USED WITHOUT WRITTEN PERMISSION		