



Distributor of Molex Connector Corporation: Excellent Integrated System Limited
Datasheet of 0945361101 - Connector Quick Connect Receptacle 16-24 AWG 0.250"
(6.35mm) Crimp

Contact us: sales@integrated-circuit.com Website: www.integrated-circuit.com

Excellent Integrated System Limited

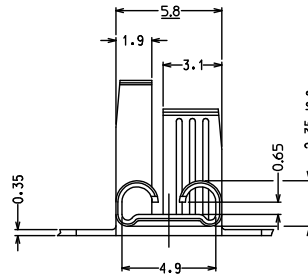
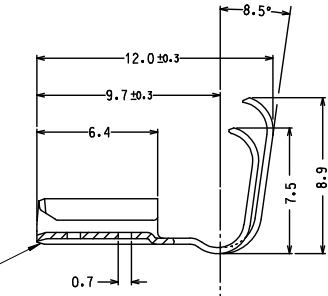
Stocking Distributor

Click to view price, real time Inventory, Delivery & Lifecycle Information:

[Molex Connector Corporation](#)
[0945361101](#)

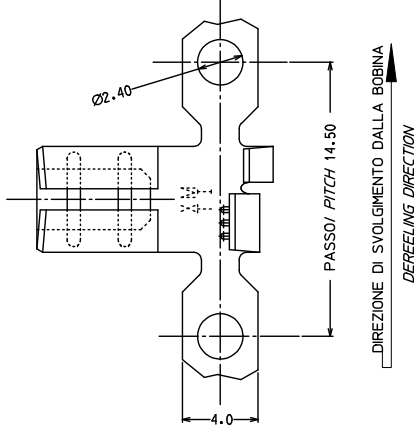
For any questions, you can email us directly:
sales@integrated-circuit.com

Contact us: sales@integrated-circuit.com Website: www.integrated-circuit.com



BORDO ARROTONDATO O SMUSSATO.
 L'INSERIMENTO NELL'HOUSING SERIE 94547
 DEVE AVVENIRE SENZA IMPUNTAMENTI.
ROUNDED EDGE

CODICE	MATERIALE	FINITURA
P/N	MATERIAL	PLATING
94536-1100	OTTONE	GREGGIO / PLAIN
94536-1101	BRASS	STAGNATO / TIN PLATED



FORZA INSERZIONE / ESTRAZIONE CON
 MASCHIO 4,8 x 0,8 NON PLACCATO :
 1° INS. : 25 N max.
 8° ESTR.: 8 N min.

INSERTION / EXTRACTION FORCE WITH
 UNPLATED TAB 4,8 x 0,8 :
 1st INS. : 25 N max.
 8th EXT. : 8 N min.

SEZ. DI AGGRAFFAGGIO : 0,5 ↔ 1,5 mm²
 Ø ISOLANTE : 2,0 ↔ 3,6 mm

WIRE RANGE : 0,5 ↔ 1,5 mm²
 Ø INSULATION : 2,0 ↔ 3,6 mm

IMBALLO: IN BOBINE CON CARTA INTERMEDIA,
 Nr. 3 BOBINE PER SCATOLA

PACKAGING: ON REELS WITH INTERLEAVING PAPER,
 Nr. 3 REELS PER BOX

S.P.Q. : 9000 pz.

S.P.Q. : 9000 pcs.

Std. Descr. : FEM TERM 4.8/08 RA NO DIMPLE UNPL 05-15
 Std. Descr. : FEM TERM 4.8/08 RA NO DIMPLE TIN 05-15

REVISED NOTES IEC NO: Z2017-0004 DRMNLSANTESS 2016/07/22 CHKDL SANTESS 2016/07/22 APPRPZANGIROLAMI 2016/07/22	QUALITY SYMBOLS ▽=0 ▽=0	GENERAL TOLERANCES (UNLESS SPECIFIED)		DIMENSION STYLE MM ONLY		SCALE 5:1	DESIGN UNITS METRIC	FIRST ANGLE PROJECTION	
		4 PLACES ± --- ± --- 3 PLACES ± --- ± --- 2 PLACES ± 0.10 ± --- 1 PLACE ± 0.2 ± ---	mm INCH	DRAWN BY LSANTESS	DATE 2002/07/23	TITLE NO DIMPLE FLAG FEMALE TERMINAL FOR 4.8 X 0.8 TABS			
		ANGULAR ± 2 °		CHECKED BY MTESTAGU	DATE 2002/07/23	MOLEX INCORPORATED			
		DRAFT WHERE APPLICABLE MUST REMAIN WITHIN DIMENSIONS		APPROVED BY GZUIN	DATE 2002/07/23	MATERIAL NO. SEE TABLE	DOCUMENT NO. SD-94536-004	SHEET NO. 1 OF 1	