

Excellent Integrated System Limited

Stocking Distributor

Click to view price, real time Inventory, Delivery & Lifecycle Information:

[Molex Connector Corporation](#)
[0472711004](#)

For any questions, you can email us directly:
sales@integrated-circuit.com

10 9 8 7 6 5 4 3 2 1

F

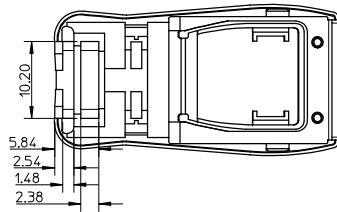
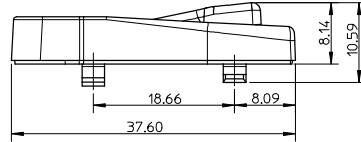
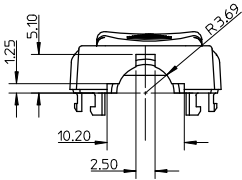
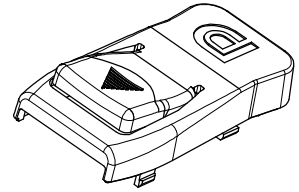
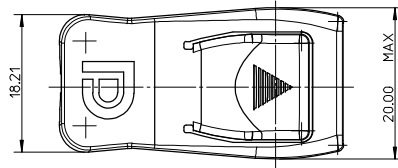
E

D

C

B

A



NOTES:

- 1.MATERIAL : HGHI TEMPERATURE THERMAL PLASTIC, UL94HB, BLACK.
- 2.PRODUCT COMPLANT TO ROHS DIERTIVE 2002/95/EC AND ELV DIRECTIVE 2000/53/EC

NEW RELEASE EC NO. SH2008-0288 DRAWN BY: CHYKORZHANG APPR: HWANG 2008/04/07 2008/04/08 2008/04/25	QUALITY SYMBOLS	GENERAL TOLERANCES (UNLESS SPECIFIED)		DIMENSION STYLE MM ONLY		SCALE 2:1	DESIGN UNITS METRIC	THIRD ANGLE PROJECTION
	▽=0	mm	INCH	DRAWN BY	DATE	TITLE		
	▽=0	4 PLACES ± ---	± ---	QWFANG	2006/09/05	COVER-UP FOR DISPLAYPORT		
		3 PLACES ± ---	± ---	CHECKED BY	DATE	MOLEX INCORPORATED		
	2 PLACES ± 0.2	± ---	IWANG	2006/09/05	APPROVED BY		DATE	MATERIAL NO.
	1 PLACE ± 0.2	± ---	JNCHEN	2006/09/05	47271-0004		2006/09/05	SD-47271-004
	ANGULAR ± 2 °	DRAFT WHERE APPLICABLE MUST REMAIN WITHIN DIMENSIONS		MATERIAL NO. 47271-0004		DOCUMENT NO. SD-47271-004		SHEET NO. 1 OF 2
		THIS DRAWING CONTAINS INFORMATION THAT IS PROPRIETARY TO MOLEX INCORPORATED AND SHOULD NOT BE USED WITHOUT WRITTEN PERMISSION						

9 8 7 6 5 4 3 2 1

10 9 8 7 6 5 4 3 2 1

F

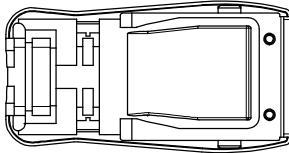
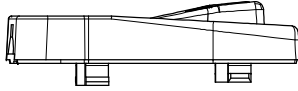
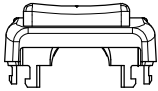
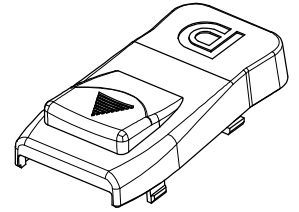
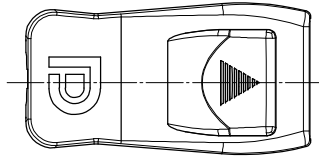
E

D

C

B

A



NOTES:

1. THIS COMPONENT'S BUTTON IS FIXED.
2. UNSPECIFIED DIMENSIONS ARE SAME AS 47271-0004.

SEE SHEET 1 EC NO: SH2008-0288 DRAWN BY: CHYKORZHANG APPR: HWANG 2008/04/07 2008/04/25	QUALITY SYMBOLS	GENERAL TOLERANCES (UNLESS SPECIFIED)		DIMENSION STYLE MM ONLY		SCALE 2:1	DESIGN UNITS METRIC	THIRD ANGLE PROJECTION
	▽=0	4 PLACES	± ---	± ---	DRAWN BY	DATE	TITLE	
	▽=0	3 PLACES	± ---	± ---	QWFANG	2006/09/05	COVER-UP FOR DISPLAYPORT	
		2 PLACES	± 0.2	± ---	CHECKED BY	DATE		
	1 PLACE	± 0.2	± ---	IWANG	2006/09/05			
		ANGULAR ± 2 °		APPROVED BY	DATE			
		DRAFT WHERE APPLICABLE MUST REMAIN WITHIN DIMENSIONS		JNCHEN	2006/09/05	MOLEX INCORPORATED		
				MATERIAL NO.	47271-1004	DOCUMENT NO.	SD-47271-004	SHEET NO. 2 OF 2
				SIZE	A3	THIS DRAWING CONTAINS INFORMATION THAT IS PROPRIETARY TO MOLEX INCORPORATED AND SHOULD NOT BE USED WITHOUT WRITTEN PERMISSION		

9 8 7 6 5 4 3 2 1