

## Excellent Integrated System Limited

Stocking Distributor

Click to view price, real time Inventory, Delivery & Lifecycle Information:

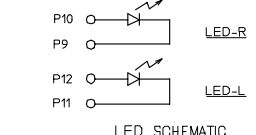
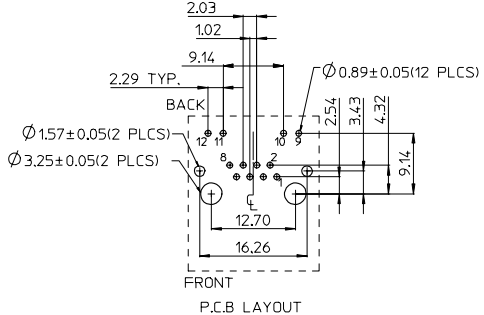
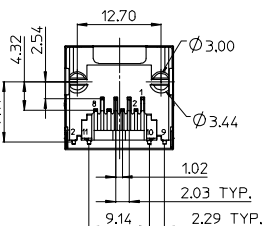
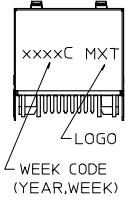
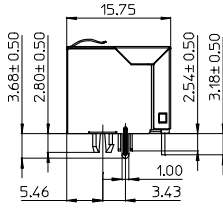
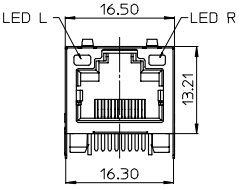
[Molex Connector Corporation](#)  
[0481460001](#)

For any questions, you can email us directly:

[sales@integrated-circuit.com](mailto:sales@integrated-circuit.com)

10 9 8 7 6 5 4 3 2 1

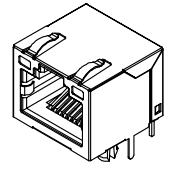
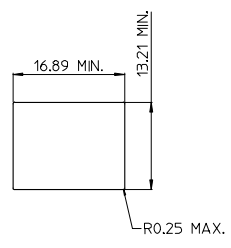
NOTES:  
 1.MATERIAL:  
 METAL SHELL: BRASS  
 HOUSING: HIGH TEMP THERMOPLASTIC,UL94V-0,COLOR:BLACK  
 INSERT: HIGH TEMP THERMOPLASTIC,UL94V-0,COLOR:BLACK  
 TERMINAL: PHOSPHOR BRONZE  
 2.PLATING:  
 TERMINAL:  
 CONTACT AREA: GOLD(Au),THICKNESS=50 MICROINCH/1.27 MICROMETER  
 SOLDER TAIL: TIN(Sn),THICKNESS=100 MICROINCH MINIMUM,  
 UNDER PLATE: NICKEL (Ni).  
 METAL SHELL:  
 SOLDER TAIL: TIN(Sn),THICKNESS=100 MICROINCH MINIMUM,  
 UNDER PLATE: NICKEL (Ni),(SOLDERING AVAILABLE)  
 SURFACE APPEARANCE: BRIGHT.  
 3.RECOMMENDED PCB THICKNESS: 1.60±0.05  
 4.PRODUCT SPECIFICATION REFER TO PS-48146-001  
 5.TEST SUMMARY REFER TO TS-48146-001  
 6.PACKAGING SPECIFICATION REFER TO PK-48146-001.  
 7.LEAD FREE AND ROHS COMPLIANT PRODUCT.



P/N	LED COLOR	
	LEFT	RIGHT
48146-0001	GREEN	GREEN
48146-0011	GREEN	AMBER
48146-0010	AMBER	GREEN

LED ELECTRICAL SPECIFICATION

PARAMETER	GREEN (TYP.)	AMBER (TYP.)	UNITS	TEST CONDITIONS
POWER DISSIPATION	105	100	mW	
REVERSE VOLTAGE	5	5	V	
PEAK WAVELENGTH	565	600	nm	IF=20mA
FORWARD VOLTAGE	2.2 MAX.=2.5	2.1 MAX.=2.5	V	IF=20mA



ADD NEW P/N EC NO: SH2007-0138 2006/09/12 DR: NALLIN 2006/09/13 CHKD: APPR: WWSCHANG 2006/09/13	QUALITY SYMBOLS	GENERAL TOLERANCES (UNLESS SPECIFIED) <table border="1"> <tr> <td></td> <td>mm</td> <td>INCH</td> </tr> <tr> <td>4 PLACES</td> <td>± 0.25</td> <td>± 0.010</td> </tr> <tr> <td>3 PLACES</td> <td>± 0.25</td> <td>± 0.010</td> </tr> <tr> <td>2 PLACES</td> <td>± 0.25</td> <td>± 0.010</td> </tr> <tr> <td>1 PLACE</td> <td>± 0.25</td> <td>± 0.010</td> </tr> </table> ANGULAR ± 3°		mm	INCH	4 PLACES	± 0.25	± 0.010	3 PLACES	± 0.25	± 0.010	2 PLACES	± 0.25	± 0.010	1 PLACE	± 0.25	± 0.010	DIMENSION STYLE MM ONLY DRAWN BY: LINDA DATE: 2004/07/27 CHECKED BY: ALL IN DATE: 2004/07/27 APPROVED BY: WWSCHANG DATE: 2004/07/27	SCALE: 1:1 DESIGN UNITS: METRIC THIRD ANGLE PROJECTION
			mm	INCH															
	4 PLACES		± 0.25	± 0.010															
	3 PLACES		± 0.25	± 0.010															
2 PLACES	± 0.25	± 0.010																	
1 PLACE	± 0.25	± 0.010																	
DRAFT WHERE APPLICABLE MUST REMAIN WITHIN DIMENSIONS	MATERIAL NO.: SEE TABLE DOCUMENT NO.: SD-48146-001	CATEGORY 5 MODULAR JACK 8 POSITION, 8 CONTACTS	MOLEX INCORPORATED																
SHEET NO.: 1 OF 1	THIS DRAWING CONTAINS INFORMATION THAT IS PROPRIETARY TO MOLEX INCORPORATED AND SHOULD NOT BE USED WITHOUT WRITTEN PERMISSION																		
REV:																			

9 8 7 6 5 4 3 2 1