

Excellent Integrated System Limited

Stocking Distributor

Click to view price, real time Inventory, Delivery & Lifecycle Information:

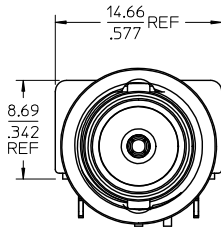
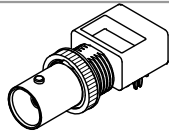
[Molex Connector Corporation](#)
[0731710700](#)

For any questions, you can email us directly:

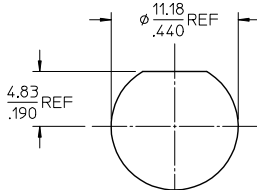
sales@integrated-circuit.com

MATERIALS AND FINISHES

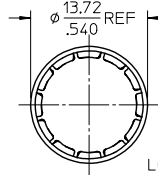
- BODY ZINC PLATED NICKEL
- CENTER CONTACT PHOSPHOR BRONZE PLATED GOLD
- INSULATOR POLYPROPYLENE (94-V0)
- BOARD CLIPS PHOSPHOR BRONZE PLATED SEE TABLE
- SOLDER TAIL(GROUND) COPPER COVERED STEEL WIRE PLATED SEE TABLE
- SOLDER TAIL(CONTACT) BRASS PLATED SEE TABLE
- WASHER PHOSPHOR BRONZE PLATED NICKEL
- NUT BRASS PLATED NICKEL



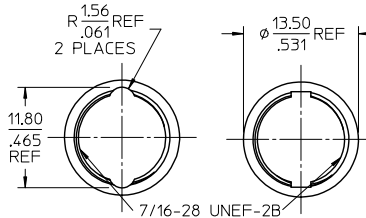
4.98±0.25
.196±0.010
CONTACT



RECOMMENDED MOUNTING HOLE
TORQUE: 0.56 N-m(5 INCH-LBS) MAX



LOCKWASHER



SLOT OPTION

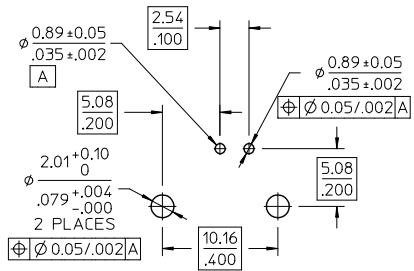
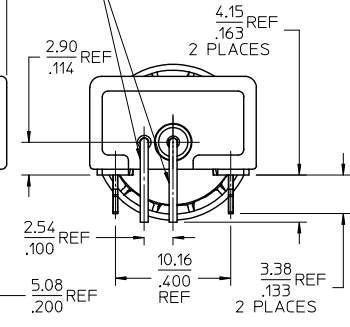
QUALITY SYMBOLS	GENERAL TOLERANCES (UNLESS SPECIFIED)	
	mm	INCH
▽=0	4 PLACES ±	±
▽=0	3 PLACES ±	±
▽=0	2 PLACES ±	±
▽=0	1 PLACE ±	±
	ANGULAR ± 2 °	

DRAFT WHERE APPLICABLE MUST REMAIN WITHIN DIMENSIONS

DIMENSION STYLE		SCALE	DESIGN UNITS	THIRD ANGLE PROJECTION
MM/IN	DATE	METRIC		
DRAWN BY	TEF	1999/02/21	TITLE	BNC JACK,R/A LOW PROFILE
CHECKED BY	DHG	1999/02/21	TITLE	75 OHMS, EWR-2320
APPROVED BY	GMH	1999/02/21	TITLE	BNC-J/PCB
MATERIAL NO.			Molex	MOLEX INCORPORATED
DOCUMENT NO.				SD-73171-070
SIZE	C			SHEET NO. 1 OF 1

THIS DRAWING CONTAINS INFORMATION THAT IS PROPRIETARY TO MOLEX INCORPORATED AND SHOULD NOT BE USED WITHOUT WRITTEN PERMISSION

LEADS ARE TO BE ADJUSTED TO FIT PCB PATTERN



RECOMMENDED PCB HOLE CONFIGURATION

- NOTES:
- PCB PLACEMENT: SUITABLE FOR MANUAL HAND PLACEMENT ONLY. MINOR SOLDER TAIL MANIPULATION MAY BE REQUIRED FOR PLACEMENT.
 - PCB PATTERN SHOWN IS FOR REFERENCE ONLY.

73171-0705	73171-0700 NO HARDWARE INCLUDED / TRAY PACK
73171-0704	73171-0701, TRAYS, HARDWARE IN SEPERATE BAG
73171-0703	73171-0700, TRAYS, HARDWARE IN SEPERATE BAG
73171-0702	73171-0700, ONE PER BAG/BRIGHT TIN
73171-0701	PLASTIC TRAYS/MATTE TIN
73171-0700	PLASTIC TRAYS/BRIGHT TIN
PART NO.	PACKAGING/PLATING

PS-89675-1030	ELECTRO/MECH PROFORM.
SPECIFICATION	DESCRIPTION