

Excellent Integrated System Limited

Stocking Distributor

Click to view price, real time Inventory, Delivery & Lifecycle Information:

[Comchip Technology](#)

[CDBT-54-HF](#)

For any questions, you can email us directly:

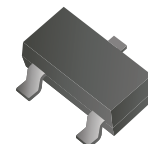
sales@integrated-circuit.com

Small Signal Schottky Diodes



CDBT-54/S/C/A-HF

Reverse Voltage: 30 Volts
Forward Current: 200 mA
RoHS Device
Halogen free



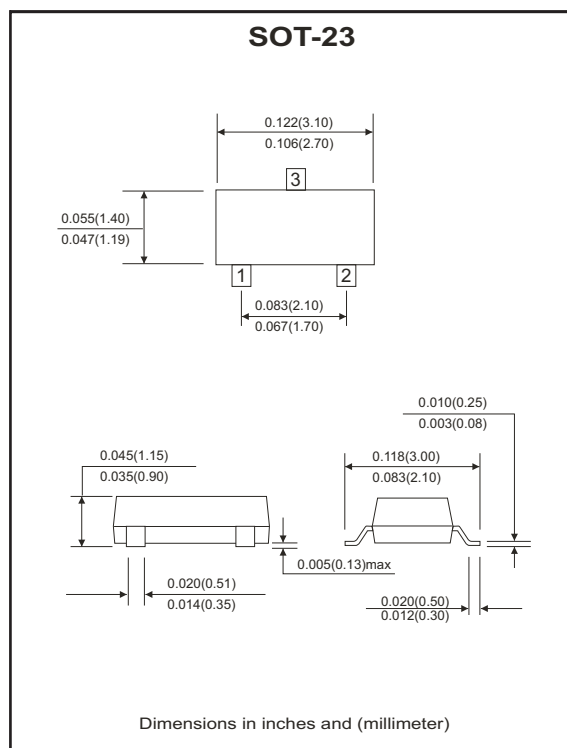
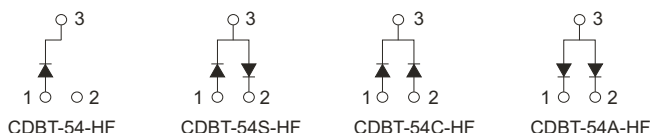
Features

- Design for mounting on small surface.
- High speed switching application, circuit protection.
- Low forward voltage drop.

Mechanical data

- Case: SOT-23, molded plastic.
- Terminals: solderable per MIL-STD-750, method 2026.
- Approx. weight: 0.008 grams
- Packing : 3,000 pieces per 7" reel.

Circuit diagram



Maximum Ratings and Electrical Characteristics

(at Ta=25°C unless otherwise noted)

Parameter	Symbol	Conditions	Value	Units
Repetitive peak reverse voltage	V _{RRM}		30	V
Reverse voltage	V _R		30	V
Forward current	I _F		200	mA
Peak surge forward current	I _{FSM}	T<1.0 sec	600	mA
Power dissipation	P _D		225	mW
Maximum forward voltage	V _F	@I _F =0.1mA @I _F =1mA @I _F =10mA @I _F =30mA @I _F =100mA	0.24 0.32 0.40 0.50 1.00	V
Maximum reverse current	I _R	@V _R =25V	2	μA
Maximum reverse recovery time	T _{rr}	I _F =I _R =10mA, R _L =100Ω	5	nS
Maximum diode capacitance	C _J	V _R =1V, f=1.0MHz	10	pF
Maximum junction temperature	T _J		125	°C
Storage temperature	T _{STG}		-55 to +125	°C

Small Signal Schottky Diodes



RATING AND CHARACTERISTIC CURVES (CDBT-54/S/C/A-HF)

Fig.1 - Forward Characteristics

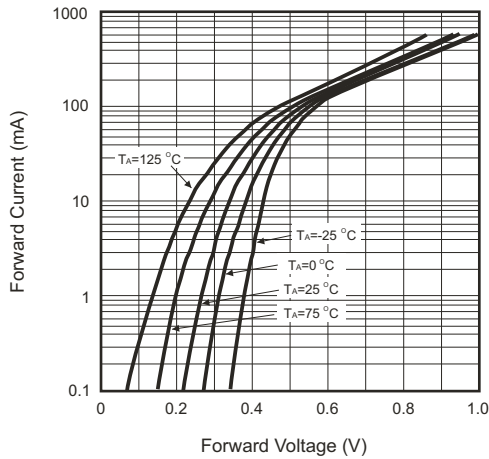


Fig.2 - Reverse Characteristics

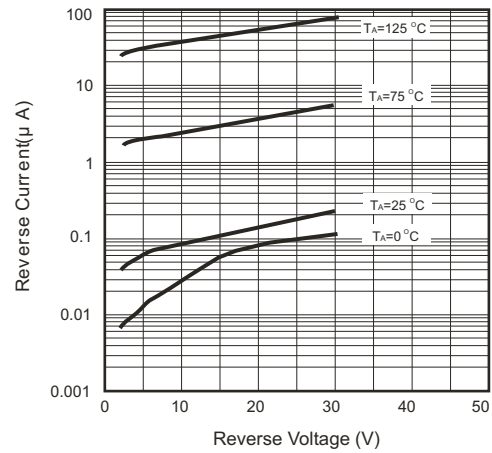


Fig.3- Capacitance between terminals characteristics

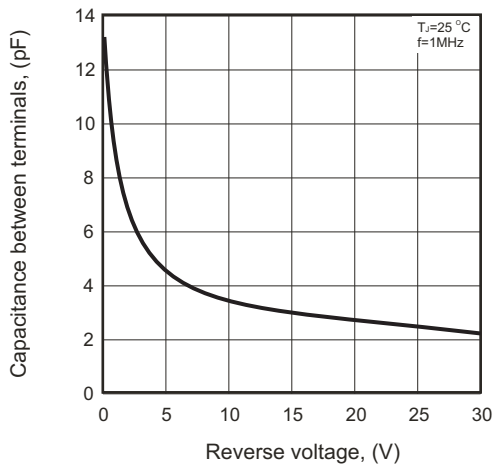
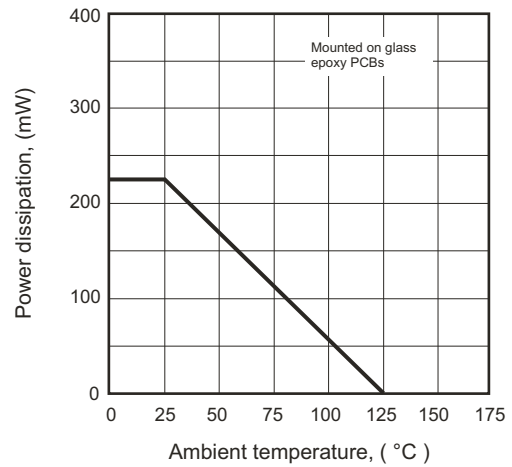


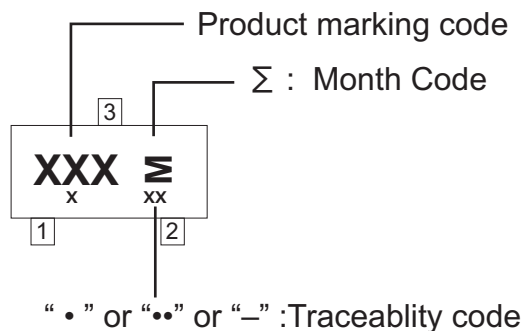
Fig.4- Power derating curve



Small Signal Schottky Diodes

Marking Code

Part Number	Marking Code	
CDBT-54-HF	KL1	JV3 ≍
CDBT-54A-HF	KL2	B6 ≍
CDBT-54C-HF	KL3	5C ≍
CDBT-54S-HF	KL4	LD3 ≍



Month Code:

Month	Odd Year (per A.D.)	Even Year (per A.D.)
Jan	1	E
Feb	2	F
Wer	3	H
Apr	4	J
May	5	K
Jun	6	L

Month	Odd Year (per A.D.)	Even Year (per A.D.)
Jul	7	N
Aug	8	P
Sep	9	U
Oct	T	X
Nov	V	Y
Dec	C	Z