

## Excellent Integrated System Limited

Stocking Distributor

Click to view price, real time Inventory, Delivery & Lifecycle Information:

[Molex Connector Corporation](#)  
[0022287033](#)

For any questions, you can email us directly:

[sales@integrated-circuit.com](mailto:sales@integrated-circuit.com)

| NO. CKTS | DIM. A | DIM. B |
|----------|--------|--------|
| 2        | 5.08   | 2.54   |
| 3        | 7.62   | 5.08   |
| 4        | 10.16  | 7.62   |
| 5        | 12.70  | 10.16  |
| 6        | 15.24  | 12.70  |
| 7        | 17.78  | 15.24  |
| 8        | 20.32  | 17.78  |
| 9        | 22.86  | 20.32  |
| 10       | 25.40  | 22.86  |
| 11       | 27.94  | 25.40  |
| 12       | 30.48  | 27.94  |
| 13       | 33.02  | 30.48  |
| 14       | 35.56  | 33.02  |
| 15       | 38.10  | 35.56  |
| 16       | 40.64  | 38.10  |
| 17       | 43.18  | 40.64  |
| 18       | 45.72  | 43.18  |
| 19       | 48.26  | 45.72  |
| 20       | 50.80  | 48.26  |
| 21       | 53.34  | 50.80  |
| 22       | 55.88  | 53.34  |
| 23       | 58.42  | 55.88  |
| 24       | 60.96  | 58.42  |
| 25       | 63.50  | 60.96  |
| 26       | 66.04  | 63.50  |
| 27       | 68.58  | 66.04  |
| 28       | 71.12  | 68.58  |
| 29       | 73.66  | 71.12  |
| 30       | 76.20  | 73.66  |
| 31       | 78.74  | 76.20  |
| 32       | 81.28  | 78.74  |
| 33       | 83.82  | 81.28  |
| 34       | 86.36  | 83.82  |
| 35       | 88.90  | 86.36  |
| 36       | 91.44  | 88.90  |
|          | 3.600  | 3.500  |



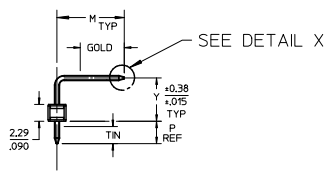
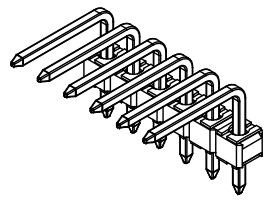
DETAIL X  
SCALE 5:1  
SEE NOTE 10



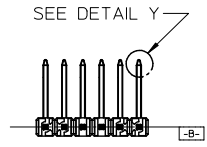
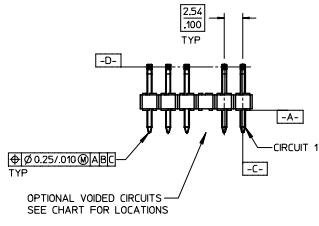
DETAIL Y  
SCALE 5:1  
SEE NOTE 10



DETAIL Z  
SCALE 5:1

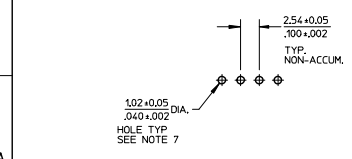


OPTIONAL KINK PIN  
SEE NOTE 7



- NOTES:
- MATERIAL: GLASS FILLED NYLON  
UL94V-0, COLOR: BLACK
  - FINISH:
    - OVERALL: 0.00127/0.000100 MIN. OVER NICKEL; 0.00127/0.00050 MIN.
    - OVERALL REFLOWED MATTE TIN: 0.00152/0.00060 MIN. OVER 0.00127/0.00050 MIN. NICKEL OVERALL.
    - SELECT GOLD: 0.00028/0.000015 MIN. SELECT TIN: 0.000254/0.000100 MIN. WITH OVERALL NICKEL UNDERPLATE: 0.00127/0.00050 MIN.
    - SELECT GOLD: 0.00076/0.000030 MIN. SELECT TIN: 0.000254/0.000100 MIN. WITH OVERALL NICKEL UNDERPLATE: 0.00127/0.00050 MIN.
  - PRODUCT SPECIFICATION: PS 10-07.
  - PACKAGING INFORMATION: SEE TABLES
  - SOLDERABILITY PER SMES-52.
  - PIN PUSH OUT FORCE: 3 LBS. MIN
  - KINK PIN OPTION NOT RECOMMENDED FOR 2 CIRCUIT PARTS. HOLE SIZE MAY NEED TO BE ADJUSTED FOR 2 CIRCUIT PARTS WITH KINK OPTION FOR PROPER INSERTION INTO THE PCB. SEE SMES-42003 FOR ADDITIONAL INFORMATION ON KINK PIN DIRECTION AND PLACEMENT.
  - HEADERS ARE NOT STACKABLE ON 2.54/100 CENTERS.
  - PARTS CONFORM TO CLASS B REQUIREMENTS OF COSMETIC SPECIFICATION PS-45499-002.
  - PIN TIP DIMENSIONS ARE SHOWN FOR REFERENCE ONLY. DIMENSIONS APPLY PRIOR TO PLATING OR ASSEMBLY.

|     |         |
|-----|---------|
| 2-* | K17     |
| 1   | K17     |
|     | SHT REV |



PCB LAYOUT: COMPONENT SIDE  
PCB THICKNESS: 1.57/0.062

|   |                                      |                                       |        |                 |  |                |  |                        |                  |
|---|--------------------------------------|---------------------------------------|--------|-----------------|--|----------------|--|------------------------|------------------|
| ADD: 42376-0894<br>EC. NO.: UCP2015-5379<br>DRAWN BY: DRINKY/PER<br>CHKD BY: CHKONGUEN<br>APPROV: SMITH   | QUALITY SYMBOLS<br>▽=0<br>▽=0<br>▽=0 | GENERAL TOLERANCES (UNLESS SPECIFIED) |        | DIMENSION STYLE |  | SCALE          | DESIGN UNITS   | THIRD ANGLE PROJECTION |                  |
|   |                                      | mm                                    | INCH   | MM/IN           | 2:1  | INCH           |  |                        |                  |
| REV: K17  | DESCRIPTION                          | 4 PLACES                              | ± .010 | ± .010          | DRAWN BY: JSCHAFFER                                  | DATE: 11/24/03 | TITLE: KK 100 HEADER ASSEMBLY<br>FLAT RIGHT ANGLE<br>BREAKAWAY<br><b>molex</b> |                        |                  |
|   |                                      | 3 PLACES                              | ± .010 | ± .010          | CHECKED BY: SAMIEC                                   | DATE: 11/26/03 |  |                        |                  |
|   |                                      | 2 PLACES                              | ± 0.25 | ± .015          | APPROVED BY: MARGULIS                                | DATE: 12/7/03  | DOCUMENT NO. SD-42376-001  |                        | SHEET NO. 1 OF * |
|   |                                      | 1 PLACE                               | ± 0.38 | ± .010          | MATERIAL NO. SEE CHART                               |                |  |                        |                  |
|   |                                      | 0 PLACE                               | ±      | ±               | DRAFT WHERE APPLICABLE MUST REMAIN WITHIN DIMENSIONS |                |  |                        |                  |
| <p>ANGULAR ±1/2°<br/>DRAWN BY: JSCHAFFER<br/>DATE: 11/24/03<br/>CHECKED BY: SAMIEC<br/>DATE: 11/26/03<br/>APPROVED BY: MARGULIS<br/>DATE: 12/7/03<br/>MATERIAL NO. SEE CHART<br/>DRAFT WHERE APPLICABLE MUST REMAIN WITHIN DIMENSIONS</p> |                                      |                                       |        |                 |  |                |  |                        |                  |