

Excellent Integrated System Limited

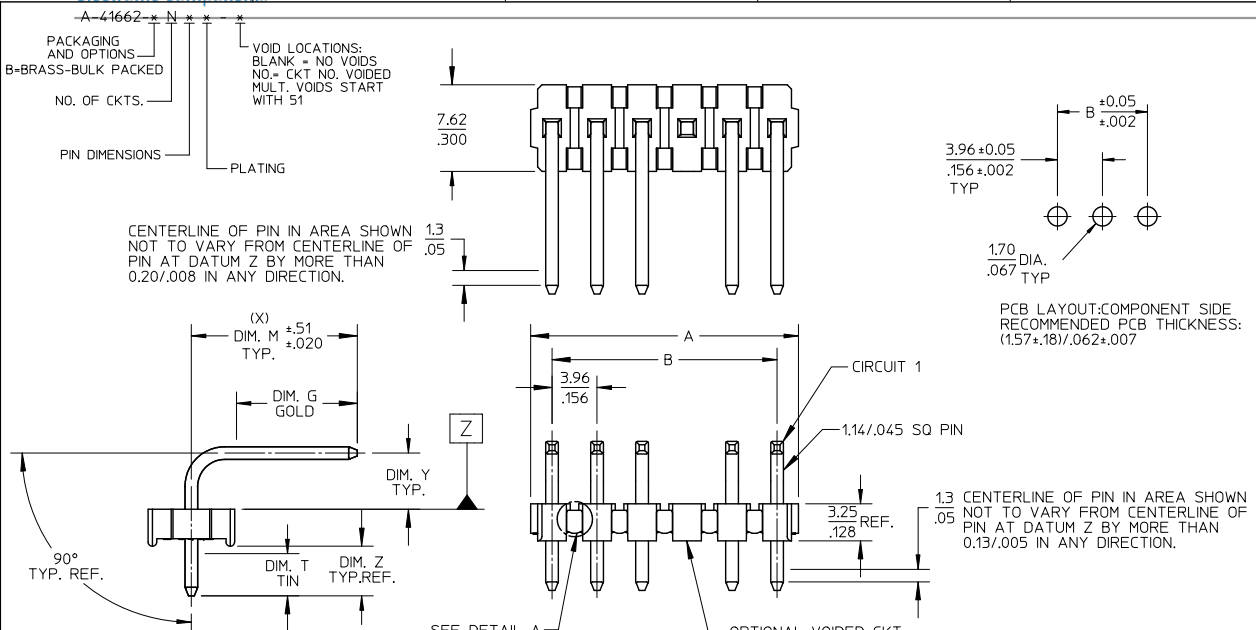
Stocking Distributor

Click to view price, real time Inventory, Delivery & Lifecycle Information:

[Molex Connector Corporation](#)
[0416620032](#)

For any questions, you can email us directly:

sales@integrated-circuit.com



CIRCUIT	B	A
2	3.96 .156	6.78/7.87 .267/3.10
3	7.92 .312	10.74/11.84 .423/4.66
4	11.89 .468	14.71/15.80 .579/6.22
5	15.85 .624	18.67/19.76 .735/7.78
6	19.81 .780	22.63/23.72 .891/9.34
7	23.77 .936	26.59/27.69 1.047/1.090
8	27.74 1.092	30.56/31.65 1.203/1.246
9	31.70 1.248	34.52/35.61 1.359/1.402
10	35.66 1.404	38.48/39.57 1.515/1.558
11	39.62 1.560	42.44/43.54 1.671/1.714
12	43.59 1.716	46.41/47.50 1.827/1.870
13	47.55 1.872	50.33/51.46 1.983/2.026
14	51.51 2.028	54.33/55.42 2.139/2.182
15	55.47 2.184	58.29/59.39 2.295/2.338
16	59.44 2.340	62.26/63.35 2.451/2.494
17	63.40 2.496	66.22/67.31 2.607/2.650
18	67.36 2.652	70.18/71.27 2.763/2.806
19	71.32 2.808	74.14/75.23 2.919/2.962
20	75.29 2.964	78.11/79.20 3.075/3.118
21	79.25 3.120	82.07/83.16 3.231/3.274
22	83.21 3.276	86.03/87.12 3.387/3.430
23	87.17 3.432	89.94/91.08 3.541/3.586
24	91.14 3.588	93.85/95.00 3.695/3.740

- NOTES:
- MATERIAL: GLASS FILLED POLYESTER, 94V-0, MOLDED BLACK
 - FINISH: PER SDES-88
 - (154) OVERALL TIN: 0.00254/0.00100 MIN.
 - OVERALL NICKEL UNDERPLATE: 0.00127/.000050 MIN.
 - (197) OVERALL REFLOWED MATTE TIN: 0.00152/0.000060 MIN.
 - OVER 0.00127/.000050 MIN. NICKEL OVERALL.
 - (208) SELECT GOLD: 0.00038/0.00015 MIN.
 - SELECT TIN: 0.00254/0.00100 MIN.
 - OVERALL NICKEL UNDERPLATE: 0.00127/.000050 MIN.
 - (228) SELECT GOLD: 0.00076/0.00030 MIN.
 - SELECT TIN: 0.00254/0.00100 MIN.
 - OVERALL NICKEL UNDERPLATE: 0.00127/.000050 MIN.
 - (241) SELECT GOLD: 0.00051/0.00020 MIN.
 - SELECT TIN: 0.00254/0.00100 MIN.
 - OVERALL NICKEL UNDERPLATE: 0.00127/.000050 MIN.
 - PRODUCT SPECIFICATION: PS-08-50.
 - PACKAGING INFORMATION: SEE CHARTS
 - SOLDERABILITY: PER SMES-152.
 - PIN PUSH-OUT FORCE: PRIOR TO SOLDERING, A 3 LB. MINIMUM FORCE (IN EITHER DIRECTION) SHALL BE REQUIRED TO PUSH THE PIN OUT OF THE HEADER.
 - PARTS ARE STACKABLE END TO END ON 3.96/.156 CENTERS. (SPACING TABS MUST BE REMOVED ON CIRCUIT SIZES 1-23 BEFORE PARTS ARE STACKABLE.)
 - THIS PART CONFORMS TO CLASS B REQUIREMENTS OF COSMETIC SPECIFICATION PS-45499-002.

- SEE DETAIL A
- OPTIONAL VOIDED CKT. SEE CHART FOR LOCATIONS
- PCB LAYOUT: COMPONENT SIDE RECOMMENDED PCB THICKNESS: (1.57±.18)/.062±.007
- 1.14/.045 SQ PIN
- 3.25 REF. .128
- 1.3 CENTERLINE OF PIN IN AREA SHOWN NOT TO VARY FROM CENTERLINE OF PIN AT DATUM Z BY MORE THAN 0.13/.005 IN ANY DIRECTION.

2-*	AJ1
1	
SHT.	REV.

ADD 26-50-5060	EC NO: UCP2012-3512	DRAWN: KIPER 2012/04/25	CHKD: BANDERSON 2012/04/25	APPR: F SMITH 2012/05/01	DESCRIPTION	QUALITY SYMBOLS	GENERAL TOLERANCES (UNLESS SPECIFIED)		DIMENSION STYLE		SCALE 4:1	DESIGN UNITS INCH	THIRD ANGLE PROJECTION	TITLE	DOCUMENT NO.	SHEET NO.		
							mm	INCH	MM/IN	DATE								
AJ1							4 PLACES ± --- ± ---	3 PLACES ± --- ± .010	2 PLACES ± 0.25 ± .014	1 PLACE ± 0.36 ± ---	0 PLACE ± ±			KK .156 HEADER ASSEMBLY FLAT BREAKAWAY 2-24 CKTS.		1 OF *		
							ANGULAR ±1/2°		DRAWN BY JSCHAFFER 2003/09/15				SEE CHART					
							DRAFT WHERE APPLICABLE MUST REMAIN WITHIN DIMENSIONS		CHECKED BY KSAMIEC 2003/09/15									
									APPROVED BY MARGULIS 2003/09/15									
									MATERIAL NO.									
									SIZE A									

tb_frame_A_P_AM_T
Rev. G 2012/01/11