



Distributor of Molex Connector Corporation: Excellent Integrated System Limited
Datasheet of 0418150582 - Connector Receptacle, Bottom Entry 6 Position 0.156" (3.96mm)
Tin Through Hole

Contact us: sales@integrated-circuit.com Website: www.integrated-circuit.com

Excellent Integrated System Limited

Stocking Distributor

Click to view price, real time Inventory, Delivery & Lifecycle Information:

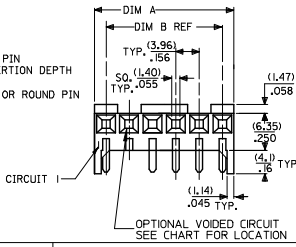
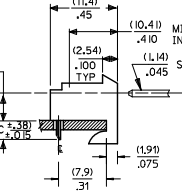
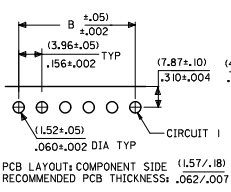
[Molex Connector Corporation](#)
[0418150582](#)

For any questions, you can email us directly:
sales@integrated-circuit.com

Contact us: sales@integrated-circuit.com Website: www.integrated-circuit.com

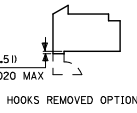
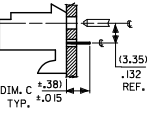
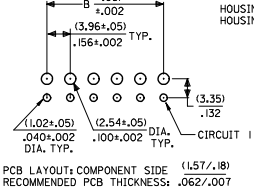
RIGHT ANGLE

HOUSING: 41815-N-AN-** (WITH RAMP)
 HOUSING: 41815-N-DN-** (WITHOUT RAMP)



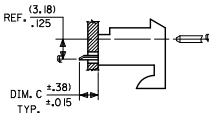
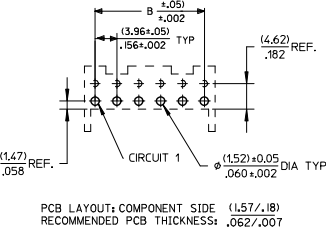
BOTTOM ENTRY

HOUSING: 41815-N-AN-** (WITH RAMP)
 HOUSING: 41815-N-DN-** (WITHOUT RAMP)



TOP ENTRY

HOUSING: 41815-N-AN-** (WITH RAMP)
 HOUSING: 41815-N-DN-** (WITHOUT RAMP)



DIM. B	DIM. A	NO. OF CKTS
(3.96)	(1.02±.25)	2
.156	.408±0.0	2
(7.92)	(1.179±.25)	3
.312	.464±0.0	3
(11.89)	(1.179±.25)	4
.468	.620±0.0	4
(15.85)	(1.171±.25)	5
.624	.776±0.0	5
(19.81)	(2.347±.25)	6
.780	.932±0.0	6
(23.77)	(2.764±.30)	7
.936	1.088±0.0	7
(27.74)	(3.169±.25)	8
1.092	1.244±0.0	8
(31.70)	(3.556±.30)	9
1.248	1.400±0.0	9
(35.66)	(3.952±.30)	10
1.404	1.556±0.0	10
(39.62)	(4.348±.30)	11
1.560	1.712±0.0	11
(43.59)	(4.745±.30)	12
1.716	1.868±0.0	12
(47.55)	(5.141±.30)	13
1.872	2.024±0.0	13
(51.51)	(5.537±.36)	14
2.028	2.180±0.0	14
(55.47)	(5.933±.36)	15
2.184	2.336±0.0	15

- NOTES:
 1. MATERIAL: HOUSING: POLYESTER, RATED UL 94V-0. COLOR: NATURAL (WHITE)
 2. FINISH:
 (197) = OVERALL REFLOWED MATTE TIN: 0.00152/.000060 MIN OVER 0.00127/.000050 MIN NICKEL.
 (208) = SELECT GOLD: 0.00038/.000015 MIN. SELECT TIN: 0.00254/.000100 MIN. OVERALL NICKEL UNDERPLATE: 0.00127/.000050 MIN.
 (228) = SELECT GOLD: 0.00076/.000030 MIN. SELECT TIN: 0.00254/.000100 MIN. OVERALL NICKEL UNDERPLATE: 0.00127/.000050 MIN.
 (909) = OVERALL TIN: 0.00254/.000100 MIN.
 3. PRODUCT SPECIFICATION: PS-08-50
 4. PACKAGING: SEE CHARTS
 5. FOR TOP ENTRY AND RIGHT ANGLE ASSEMBLIES WITH LOWER INSERTION FORCE USE SINGLE BEAM CONTACT, (TERMINAL NO. 4244)
 6. SOLDERABILITY: WHEN PARTS ARE SOLDERED AT A TEMPERATURE OF 230°C (446°F) FOR 5 SECONDS EACH SOLDERED SURFACE SHALL BE A MINIMUM OF 95% COVERED WITH A SMOOTH CONTINUOUS ADHERENT COATING. FOR ADDITIONAL INFORMATION SEE SMES-152.
 7. PARTS ARE STACKABLE END TO END ON (3.96)/.156 CENTERLINE.
 8. THIS PART CONFORMS TO CLASS B REQUIREMENTS OF COSMETIC SPEC PS-45499-002.

ADD: 41815-0687 EC NO: UCP2015-1957 DRW: MK/PPER CHK: KONGJUN APPR: SHTH AN3	QUALITY SYMBOLS 	GENERAL TOLERANCES (UNLESS SPECIFIED)		DIMENSIONAL STYLE		SCALE	DESIGN UNITS	THIRD ANGLE PROJECTION
		4 PLACES ± --- ± --- 3 PLACES ± --- ± .010 2 PLACES ± 0.25 ± .015 1 PLACE ± 0.38 ± --- 0 PLACE ± ±	mm INCH mm INCH	MM/IN				
				DRAWN BY DATE		MATERIAL NO.	DOCUMENT NO.	
		CHECKED BY DATE		SEE CHART	SHEET NO.			
		APPROVED BY DATE				THIS DRAWING CONTAINS INFORMATION THAT IS PROPRIETARY TO MOLEX INCORPORATED AND SHOULD NOT BE USED WITHOUT WRITTEN PERMISSION	1 OF *	
DRAFT WHERE APPLICABLE MUST REMAIN WITHIN DIMENSIONS								