

## Excellent Integrated System Limited

Stocking Distributor

Click to view price, real time Inventory, Delivery & Lifecycle Information:

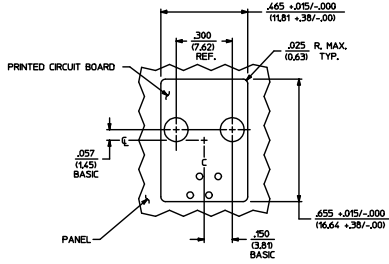
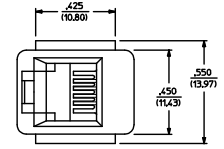
[Molex Connector Corporation](#)  
[0424104410](#)

For any questions, you can email us directly:

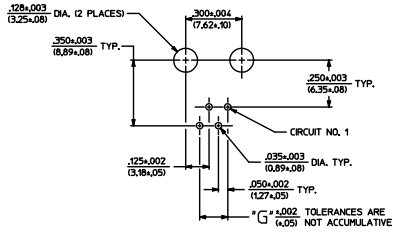
[sales@integrated-circuit.com](mailto:sales@integrated-circuit.com)

NOTES:  
 1) MATERIALS: HOUSING PARTS ARE MADE OF POLYESTER, RATED UL 94 V-0, COLOR IS BLACK; TERMINALS ARE .015(0.38) THICK PHOSPHOR BRONZE.  
 2) TERMINAL PLATING OPTIONS PER ES-88-\*\*\*\*:  
 A - SELECT GOLD IN CONTACT AREA: 50 MICRONS MIN.  
 SELECT MATTIE TN IN PC TAIL AREA: 100 MICRONS MIN.  
 WITH OVERALL NICKEL UNDERPLATE: 50 MICRONS MIN.  
 3) THESE MODULAR JACKS MEET THE PERFORMANCE REQUIREMENTS OF MOLEX PRODUCT SPECIFICATION PS-42410.  
 4) CONNECTORS ARE TO BE PACKED IN THERMOFORMED TRAYS, PER PACKAGING SPECIFICATION PK-42410-492.  
 5) ALL JACKS ARE DESIGNED TO BE USED WITH .062(1.57) OR .025(0.63) THICK P.C. BOARDS.  
 6) ALL JACKS CONFORM TO AND ACCEPT PLUGS WHICH CONFORM TO FCC RULES AND REGULATIONS PART 68, SUBPART F, WHEN PLATED WITH 50 MICRONS GOLD.  
 7) ALL JACKS MUST BE CAPABLE OF FITTING INTO MOLEX GAGE G-42410 (CONNECTOR SIZE 4).  
 8) SEE SHEETS 2 & 4 FOR CONNECTOR SIZE 6.  
 9) SEE SHEETS 3 & 4 FOR CONNECTOR SIZE 8.  
 10) SEE SHEET 4 FOR ASSEMBLY ITEM NUMBERS.  
 11) PART CONFORMS TO CLASS 'B' REQUIREMENTS OF COSMETIC SPECIFICATION PS-45499-002.  
 12) ENGRAVED NUMBERS ON HOUSING BODY ARE FOR MOLDING IDENTIFICATION ONLY. THEY ARE NOT INTENDED FOR ASSEMBLY IDENTIFICATION PURPOSES.  
 13) ALL UNTOLERANCED DIMENSIONS ARE SHOWN FOR REFERENCE ONLY.

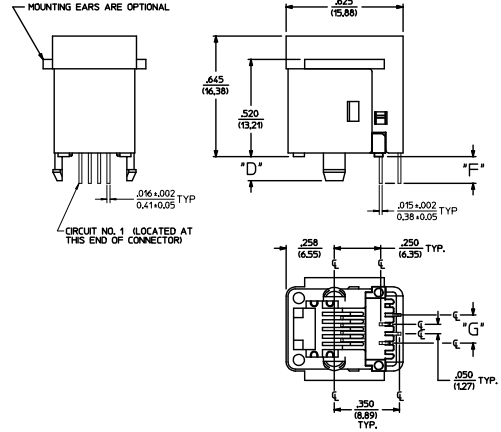
| P.C. BOARD THICKNESS | DIM. 'D' (MTG. PEGS) | DIM. 'F' (P.C. TAILS)                | CONNECTOR SIZE | CIRCUIT SIZE | DIM. 'G'       |
|----------------------|----------------------|--------------------------------------|----------------|--------------|----------------|
| 0.062"               | .128<br>(3.25)       | .120 +.015/-.025<br>(3.05 +.38/-.63) | 4              | 4            | .150<br>(3.81) |
| 0.125"               | .191<br>(4.85)       | .205 +.015/-.025<br>(5.21 +.38/-.63) | 4              | 2            | .090<br>(2.27) |



PANEL CUT-OUT FOR CONNECTOR SIZE 4



P.C. BOARD LAYOUT FOR CONNECTOR SIZE 4  
 VIEWED FROM COMPONENT SIDE



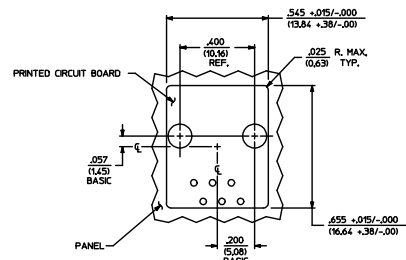
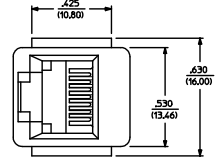
SIZE 4 MODULAR JACK LOADED WITH 4 TERMINALS SHOWN ABOVE  
 (SEE SHEET 4 FOR PART NUMBER AVAILABILITY)

| QUALITY SYMBOLS                                      | GENERAL TOLERANCES (UNLESS SPECIFIED) |               | DIMENSION STYLE |                | SCALE      | DESIGN UNITS     | THIRD ANGLE PROJECTION           |
|--|---------------------------------------|---------------|-----------------|----------------|------------|------------------|----------------------------------|
|  | mm                                    | INCH          | IN/MM           | INCH           |            |                  |                                  |
| ▽=0  | 4 PLACES ±.010                        | ±.010         | DRAWN BY        | DATE           | 4:1        | INCH             | ASSEMBLY, VERTICAL MODULAR JACKS |
| ▽=0  | 3 PLACES ±.025                        | ±.010         | CHECKED BY      | DATE           |            |                  |                                  |
| ▽=0  | 2 PLACES ±.025                        | ±.010         | DAP             | DATE           |            |                  |                                  |
| ▽=0  | 1 PLACE ±.025                         | ±.010         | APPROVED BY     | DATE           |            |                  |                                  |
| ▽=0  | 0 PLACE ±.025                         | ±.010         | FSM             | DATE           | 2012/02/14 |                  |                                  |
| DRAFT WHERE APPLICABLE MUST REMAIN WITHIN DIMENSIONS |                                       | ANGULAR ±1/2° |                 | MATERIAL NR.   |            | DOCUMENT NR.     |                                  |
| SEE SHEET 4  |                                       | SEE SHEET 4   |                 | SDA-42410-**** |            | SHEET NO. 1 OF 4 |                                  |

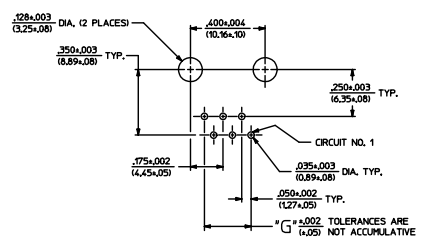
- NOTES:
- MATERIALS: HOUSING PARTS ARE MADE OF POLYESTER, RATED UL1, 94 V-0, COLOR IS BLACK, TERMINALS ARE .015(0.38) THICK PHOSPHOR BRONZE.
  - TERMINAL PLATING OPTIONS PER ES-88-\*\*\*\*:
    - A - SELECT GOLD IN CONTACT AREA: 50 MICRONS MIN. SELECT MATTE TIN IN PC TAIL AREA: 100 MICRONS MIN. WITH OVERALL NICKEL UNDERPLATE: 50 MICRONS MIN.
    - B - SELECT GOLD IN CONTACT AREA: 15 MICRONS MIN. SELECT MATTE TIN IN PC TAIL AREA: 100 MICRONS MIN. WITH OVERALL NICKEL UNDERPLATE: 50 MICRONS MIN.
  - THESE MODULAR JACKS MEET THE PERFORMANCE REQUIREMENTS OF MOLEX PRODUCT SPECIFICATION PS-42410.
  - CONNECTORS ARE TO BE PACKED IN THERMOFORMED TRAYS, PER PACKAGING SPECIFICATION PK-42410-49Z.
  - ALL JACKS ARE DESIGNED TO BE USED WITH .062(1.57) OR .025(0.63) THICK P.C. BOARDS.
  - ALL JACKS CONFORM TO AND ACCEPT PLUGS WHICH CONFORM TO FCC RULES AND REGULATIONS PART 68, SUBPART F, WHEN PLATED WITH 50 MICRONS GOLD.
  - ALL JACKS MUST BE CAPABLE OF FITTING INTO MOLEX GAGE G-42410 (CONNECTOR SIZE 4).
  - SEE SHEETS 1 & 4 FOR CONNECTOR SIZE 4.
  - SEE SHEETS 3 & 4 FOR CONNECTOR SIZE 8.
  - SEE SHEET 4 FOR ASSEMBLY ITEM NUMBERS.
  - PART CONFORMS TO CLASS "B" REQUIREMENTS OF COSMETIC SPECIFICATION PS-5499-002.
  - ENGRAVED NUMBERS ON HOUSING BODY ARE FOR HOLDING IDENTIFICATION ONLY. THEY ARE NOT INTENDED FOR ASSEMBLY IDENTIFICATION PURPOSES.
  - ALL UNTOLERANCED DIMENSIONS ARE SHOWN FOR REFERENCE ONLY.

| P.C. BOARD THICKNESS | DIM. "D" (MTG. PEGS) | DIM. "F" (P.C. TAILS)                 |
|----------------------|----------------------|---------------------------------------|
| 0.062(1.57)          | .128<br>(3.25)       | .120 +.015/-.025<br>(3.05 +.38/- .63) |
| 0.125(3.18)          | .191<br>(4.85)       | .205 +.015/-.025<br>(5.21 +.38/- .63) |

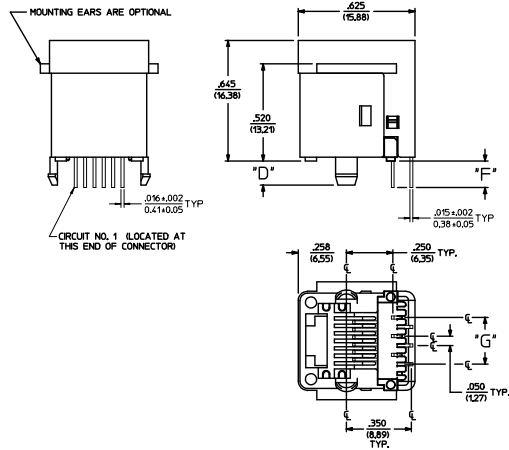
| CONNECTOR SIZE | CIRCUIT SIZE | DIM. "G"       |
|----------------|--------------|----------------|
| 6              | 6            | .250<br>(6.35) |
| 6              | 4            | .150<br>(3.81) |
| 6              | 2            | .050<br>(1.27) |



PANEL CUT-OUT FOR CONNECTOR SIZE 6



P.C. BOARD LAYOUT FOR CONNECTOR SIZE 6  
VIEWED FROM COMPONENT SIDE



SIZE 6 MODULAR JACK LOADED WITH 6 TERMINALS SHOWN ABOVE  
(SEE SHEET 4 FOR PART NUMBER AVAILABILITY)

|  |                 |  |                       |           |                   |                        |
|--|-----------------|--|-----------------------|-----------|-------------------|------------------------|
| SEE SHEET 1<br>EC NO. 042410-2536<br>DRAWING/REV 2015/07/24<br>CHK'D/BEL 2015/07/24<br>APPR'D/SM 2015/07/24<br>REV 1 | QUALITY SYMBOLS | GENERAL TOLERANCES (UNLESS SPECIFIED)                | DIMENSION STYLE IN/MM | SCALE 4:1 | DESIGN UNITS INCH | THIRD ANGLE PROJECTION |
|  | ▽=0             | 4 PLACES ± .010                                      | mm INCH               |           |                   |                        |
|  | ▽=0             | 3 PLACES ± .010                                      | DRAWN BY DATE         |           |                   |                        |
|  | ▽=0             | 2 PLACES ± .025                                      | CHECKED BY DATE       |           |                   |                        |
|  |                 | 1 PLACE ± .025                                       | DAP 1990/10/12        |           |                   |                        |
|  |                 | 0 PLACE ± .025                                       | APPROVED BY DATE      |           |                   |                        |
|  |                 | ANGULAR ±1/2°  | FSM 2012/02/14        |           |                   |                        |
|  |                 | DRAFT WHERE APPLICABLE MUST REMAIN WITHIN DIMENSIONS |                       |           |                   |                        |

ASSEMBLY: VERTICAL MODULAR JACKS

**molex**

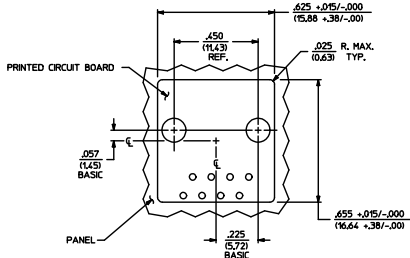
DOCUMENT NO. SDA-42410-\*\*\*\* SHEET NO. 2 OF 4

SIZE D THIS DRAWING CONTAINS INFORMATION THAT IS PROPRIETARY TO MOLEX INCORPORATED AND SHOULD NOT BE USED WITHOUT WRITTEN PERMISSION

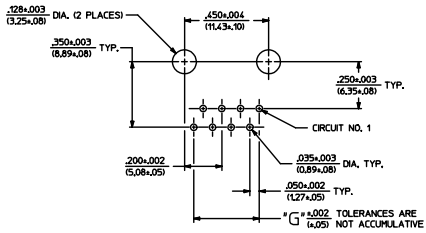
NOTES:  
 1) MATERIALS: HOUSING PARTS ARE MADE OF POLYESTER, RATED UL, 94 V-0, COLOR IS BLACK; TERMINALS ARE .015(0.38) THICK PHOSPHOR BRONZE.  
 2) TERMINAL PLATING OPTIONS PER ES-88-444-:  
 A - SELECT GOLD IN CONTACT AREA; 50 MICRONS MIN. SELECT MATTE TIN IN PC TAIL AREA; 100 MICRONS MIN. WITH OVERALL NICKEL UNDERPLATE; 50 MICRONS MIN.  
 3) THESE MODULAR JACKS MEET THE PERFORMANCE REQUIREMENTS OF MOLEX PRODUCT SPECIFICATION PS-42410.  
 4) CONNECTORS ARE TO BE PACKED IN THERMOFORMED TRAYS, PER PACKAGING SPECIFICATION PK-42410-492.  
 5) ALL JACKS ARE DESIGNED TO BE USED WITH .062(1.57) OR .125(3.18) THICK P.C. BOARDS.  
 6) ALL JACKS CONFORM TO AND ACCEPT PLUGS WHICH CONFORM TO FCC RULES AND REGULATIONS PART 68, SUBPART F, WHEN PLATED WITH 50 MICRONS OF GOLD.  
 7) ALL JACKS MUST BE CAPABLE OF FITTING INTO MOLEX GAGE G-42410 (CONNECTOR SIZE 4).  
 8) SEE SHEETS 1 & 4 FOR CONNECTOR SIZE 4.  
 9) SEE SHEETS 2 & 4 FOR CONNECTOR SIZE 6.  
 10) SEE SHEET 4 FOR ASSEMBLY ITEM NUMBERS.  
 11) PART CONFORMS TO CLASS "B" REQUIREMENTS OF COSMETIC SPECIFICATION PS-45499-002.  
 12) ENGRAVED NUMBERS ON HOUSING BODY ARE FOR MOLDING IDENTIFICATION ONLY. THEY ARE NOT INTENDED FOR ASSEMBLY IDENTIFICATION PURPOSES.  
 13) ALL UNTOLERANCED DIMENSIONS ARE SHOWN FOR REFERENCE ONLY.

| P.C. BOARD THICKNESS | DIM. "D" (MTG. PEGS) | DIM. "F" (P.C. TAILS)              |
|----------------------|----------------------|------------------------------------|
| .062(1.57)           | .128 (3.25)          | .120 +.015/-.025 (3.05 +.38/- .63) |
| .125(3.18)           | .191 (4.85)          | .205 +.015/-.025 (5.21 +.38/- .63) |

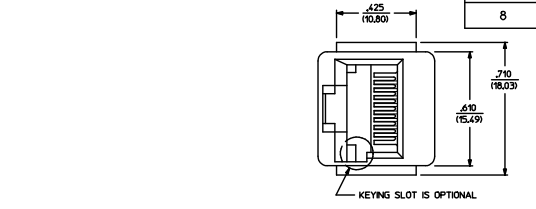
| CONNECTOR SIZE | CIRCUIT SIZE | DIM. "G"    |
|----------------|--------------|-------------|
| 8              | 8            | .350 (8.89) |
| 8              | 6            | .250 (6.35) |
| 8              | 4            | .150 (3.81) |
| 8              | 2            | .050 (1.27) |



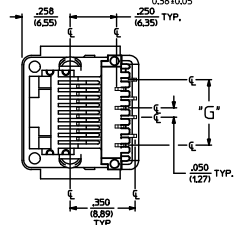
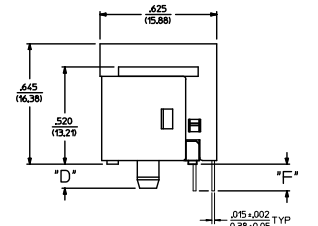
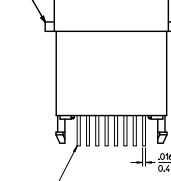
PANEL CUT-OUT FOR CONNECTOR SIZE 8



P.C. BOARD LAYOUT FOR CONNECTOR SIZE 8  
 VIEWED FROM COMPONENT SIDE



HOUSING EARS ARE OPTIONAL (SEE CHARACTERISTICS LEGEND)



SIZE 8 MODULAR JACK LOADED WITH 8 TERMINALS SHOWN ABOVE  
 (SEE SHEET 4 FOR PART NUMBER AVAILABILITY)

| QUALITY SYMBOLS   | GENERAL TOLERANCES (UNLESS SPECIFIED) |       | DIMENSION STYLE |            | SCALE                       | DESIGN UNITS | THIRD ANGLE PROJECTION           |
|---|---------------------------------------|-------|-----------------|------------|-----------------------------|--------------|----------------------------------|
|   | mm                                    | INCH  | IN/MM           | INCH       |                             |              |                                  |
| ∇=0   | 4 PLACES                              | ±.010 | DRAWN BY        | DATE       | 4:1                         | INCH         | ASSEMBLY; VERTICAL MODULAR JACKS |
| ∇=0   | 3 PLACES                              | ±.010 | DLT             | 1990/10/12 |                             |              |                                  |
| ∇=0   | 2 PLACES                              | ±.025 | CHECKED BY      | DATE       |                             |              |                                  |
| ∇=0   | 1 PLACE                               | ±.050 | DAP             | 1990/10/12 |                             |              |                                  |
| ∇=0   | 0 PLACE                               | ±.100 | APPROVED BY     | DATE       | molex                       |              | SHEET NO. 3 OF 4                 |
| ANGULAR ±1/2°   |                                       | ±     | FSMITH          | 2012/02/14 | DOCUMENT NO. SDA-42410-**** |              |                                  |
| DRAFT WHERE APPLICABLE MUST REMAIN WITHIN DIMENSIONS  |                                       |       |                 |            |                             |              |                                  |
| SEE SHEET 4 FOR PART NUMBER AVAILABILITY  |                                       |       |                 |            |                             |              |                                  |
| THIS DRAWING CONTAINS INFORMATION THAT IS PROPRIETARY TO MOLEX INCORPORATED AND SHOULD NOT BE USED WITHOUT WRITTEN PERMISSION |                                       |       |                 |            |                             |              |                                  |

| SIZE 4 VERTICAL MODJACK ASSEMBLIES |                         |                     |                      |                      |                         |
|------------------------------------|-------------------------|---------------------|----------------------|----------------------|-------------------------|
| PART CHARACTERISTICS               |                         |                     |                      |                      |                         |
| ASSEMBLY ITEM NUMBER               | EXTERNAL CONNECTOR SIZE | NUMBER OF POSITIONS | P.C. BOARD THICKNESS | MOUNTING EARS OPTION | TERMINAL PLATING OPTION |
| 42410-4168                         | 4 POS. BODY             | 4                   | .062(1.57)           | YES                  | A                       |
| 42410-4170                         | ↓                       | ↓                   | .062(1.57)           | NO                   | A                       |
| 42410-4264                         | ↓                       | ↓                   | .125(3.18)           | YES                  | A                       |
| 42410-4266                         | 4 POS. BODY             | 4                   | .125(3.18)           | NO                   | A                       |
| 42410-4312                         | 4 POS. BODY             | 2                   | .062(1.57)           | YES                  | A                       |
| 42410-4314                         | ↓                       | ↓                   | .062(1.57)           | NO                   | A                       |
| 42410-4408                         | ↓                       | ↓                   | .125(3.18)           | YES                  | A                       |
| 42410-4440                         | 4 POS. BODY             | 2                   | .125(3.18)           | NO                   | A                       |

| SIZE 6 VERTICAL MODJACK ASSEMBLIES |                         |                     |                      |                      |                         |
|------------------------------------|-------------------------|---------------------|----------------------|----------------------|-------------------------|
| PART CHARACTERISTICS               |                         |                     |                      |                      |                         |
| ASSEMBLY ITEM NUMBER               | EXTERNAL CONNECTOR SIZE | NUMBER OF POSITIONS | P.C. BOARD THICKNESS | MOUNTING EARS OPTION | TERMINAL PLATING OPTION |
| 42410-6168                         | 6 POS. BODY             | 6                   | .062(1.57)           | YES                  | A                       |
| 42410-6170                         | ↓                       | ↓                   | .062(1.57)           | NO                   | A                       |
| 42410-6264                         | ↓                       | ↓                   | .125(3.18)           | YES                  | A                       |
| 42410-6266                         | 6 POS. BODY             | 6                   | .125(3.18)           | NO                   | A                       |
| 42410-6312                         | 6 POS. BODY             | 4                   | .062(1.57)           | YES                  | A                       |
| 42410-6314                         | ↓                       | ↓                   | .062(1.57)           | NO                   | A                       |
| 42410-6320                         | ↓                       | ↓                   | .062(1.57)           | YES                  | B                       |
| 42410-6408                         | ↓                       | ↓                   | .125(3.18)           | YES                  | A                       |
| 42410-6440                         | 6 POS. BODY             | 4                   | .125(3.18)           | NO                   | A                       |
| 42410-6456                         | 6 POS. BODY             | 2                   | .062(1.57)           | YES                  | A                       |
| 42410-6458                         | ↓                       | ↓                   | .062(1.57)           | NO                   | A                       |
| 42410-6552                         | ↓                       | ↓                   | .125(3.18)           | YES                  | A                       |
| 42410-6554                         | 6 POS. BODY             | 2                   | .125(3.18)           | NO                   | A                       |

| SIZE 8 VERTICAL MODJACK ASSEMBLIES |                         |                     |                      |               |                      |                         |
|------------------------------------|-------------------------|---------------------|----------------------|---------------|----------------------|-------------------------|
| PART CHARACTERISTICS               |                         |                     |                      |               |                      |                         |
| ASSEMBLY ITEM NUMBER               | EXTERNAL CONNECTOR SIZE | NUMBER OF POSITIONS | P.C. BOARD THICKNESS | KEYING OPTION | MOUNTING EARS OPTION | TERMINAL PLATING OPTION |
| 42410-8312                         | 8 POS. BODY             | 8                   | .062(1.57)           | NO            | YES                  | A                       |
| 42410-8314                         | ↓                       | ↓                   | .062(1.57)           | NO            | NO                   | A                       |
| 42410-8360                         | ↓                       | ↓                   | .062(1.57)           | YES           | YES                  | A                       |
| 42410-8362                         | ↓                       | ↓                   | .062(1.57)           | YES           | NO                   | A                       |
| 42410-8504                         | ↓                       | ↓                   | .125(3.18)           | NO            | YES                  | A                       |
| 42410-8506                         | ↓                       | ↓                   | .125(3.18)           | NO            | NO                   | A                       |
| 42410-8552                         | ↓                       | ↓                   | .125(3.18)           | YES           | YES                  | A                       |
| 42410-8554                         | 8 POS. BODY             | 8                   | .125(3.18)           | YES           | NO                   | A                       |
| 42410-8600                         | 8 POS. BODY             | 6                   | .062(1.57)           | NO            | YES                  | A                       |
| 42410-8602                         | ↓                       | ↓                   | .062(1.57)           | NO            | NO                   | A                       |
| 42410-8648                         | ↓                       | ↓                   | .062(1.57)           | YES           | YES                  | A                       |
| 42410-8650                         | ↓                       | ↓                   | .062(1.57)           | YES           | NO                   | A                       |
| 42410-8792                         | ↓                       | ↓                   | .125(3.18)           | NO            | YES                  | A                       |
| 42410-8794                         | ↓                       | ↓                   | .125(3.18)           | NO            | NO                   | A                       |
| 42410-8840                         | ↓                       | ↓                   | .125(3.18)           | YES           | YES                  | A                       |
| 42410-8842                         | 8 POS. BODY             | 6                   | .125(3.18)           | YES           | NO                   | A                       |
| 42410-8888                         | 8 POS. BODY             | 4                   | .062(1.57)           | NO            | YES                  | A                       |
| 42410-8890                         | ↓                       | ↓                   | .062(1.57)           | NO            | NO                   | A                       |
| 42410-8936                         | ↓                       | ↓                   | .062(1.57)           | YES           | YES                  | A                       |
| 42410-8938                         | ↓                       | ↓                   | .062(1.57)           | YES           | NO                   | A                       |
| 42410-9080                         | ↓                       | ↓                   | .125(3.18)           | NO            | YES                  | A                       |
| 42410-9082                         | ↓                       | ↓                   | .125(3.18)           | NO            | NO                   | A                       |
| 42410-9128                         | ↓                       | ↓                   | .125(3.18)           | YES           | YES                  | A                       |
| 42410-9130                         | 8 POS. BODY             | 4                   | .125(3.18)           | YES           | NO                   | A                       |
| 42410-9176                         | 8 POS. BODY             | 2                   | .062(1.57)           | NO            | YES                  | A                       |
| 42410-9178                         | ↓                       | ↓                   | .062(1.57)           | NO            | NO                   | A                       |
| 42410-9224                         | ↓                       | ↓                   | .062(1.57)           | YES           | YES                  | A                       |
| 42410-9226                         | ↓                       | ↓                   | .062(1.57)           | YES           | NO                   | A                       |
| 42410-9368                         | ↓                       | ↓                   | .125(3.18)           | NO            | YES                  | A                       |
| 42410-9370                         | ↓                       | ↓                   | .125(3.18)           | NO            | NO                   | A                       |
| 42410-9416                         | ↓                       | ↓                   | .125(3.18)           | YES           | YES                  | A                       |
| 42410-9418                         | 8 POS. BODY             | 2                   | .125(3.18)           | YES           | NO                   | A                       |

|  |  |                                       |   |            |                |                                  |
|--|--|---------------------------------------|---|------------|----------------|----------------------------------|
| SEE SHEET 1<br>EC NO. 167205-2536<br>2015/07/24<br>ZDR/ANN/01EN<br>CHK/DBELL<br>2015/07/24<br>AP/RES/31<br>2015/07/24<br>BR/ | QUALITY SYMBOLS                                      | GENERAL TOLERANCES (UNLESS SPECIFIED) | DIMENSION STYLE   | SCALE      | DESIGN UNITS   | THIRD ANGLE PROJECTION           |
|  | ▽=0  | 4 PLACES +--- +---                    | IN/MM   | 1:1        | INCH           | ASSEMBLY, VERTICAL MODULAR JACKS |
|  | ▽=0  | 3 PLACES +--- +---                    |   |            |                |                                  |
|  | ▽=0  | 2 PLACES ±0.25 +---                   |   |            |                |                                  |
|  | ▽=0  | 1 PLACE ±--- +---                     |   |            |                |                                  |
|  | ANGULAR ±1/2°  |                                       |   |            |                |                                  |
|  | DRAFT WHERE APPLICABLE MUST REMAIN WITHIN DIMENSIONS |                                       |   |            |                |                                  |
|  |  |                                       | DRAWN BY  | DATE       |                |                                  |
|  |  |                                       | GLT   | 1990/10/12 |                |                                  |
|  |  |                                       | CHECKED BY  | DATE       |                |                                  |
|  |  |                                       | BAP   | 1990/10/12 |                |                                  |
|  |  |                                       | APPROVED BY   | DATE       |                |                                  |
|  |  |                                       | FSMITH  | 2012/02/14 |                |                                  |
|  |  |                                       | MATERIAL NO.  |            | DOCUMENT NO.   |                                  |
|  |  |                                       | SEE CHART   |            | SDA-42410-**** |                                  |
|  |  |                                       | THIS DRAWING CONTAINS INFORMATION THAT IS PROPRIETARY TO MOLEX INCORPORATED AND SHOULD NOT BE USED WITHOUT WRITTEN PERMISSION |            |                |                                  |
|  |  |                                       |   |            |                | SHEET NO. 4 OF 4                 |