

Excellent Integrated System Limited

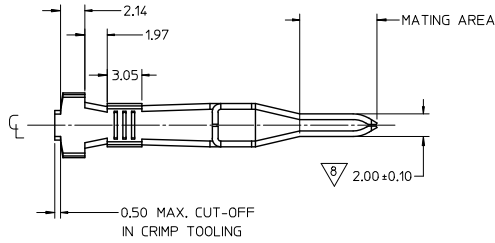
Stocking Distributor

Click to view price, real time Inventory, Delivery & Lifecycle Information:

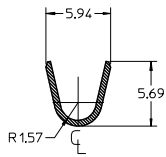
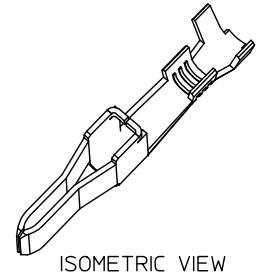
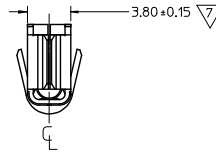
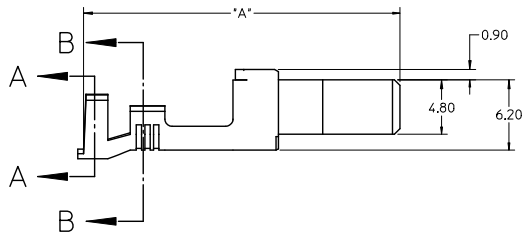
[Molex Connector Corporation](#)
[0428170142](#)

For any questions, you can email us directly:

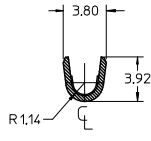
sales@integrated-circuit.com



- NOTES:
- MATERIAL: COPPER ALLOY 151, 0.50mm THICK.
 - PLATING:
 - SELECT GOLD: 0.00076 MIN. SELECT GOLD IN CONTACT AREA.
 - 0.00254 MIN. SELECT TIN IN CRIMP AREA OVER 0.00127 NICKEL.
 - SELECT SILVER: 0.00254 MIN. SELECT SILVER IN CONTACT AREA.
 - 0.00254 MIN. SELECT TIN IN CRIMP AREA OVER 0.00127 NICKEL.
 - OVERALL TIN: 0.00254 MIN. BRIGHT TIN OVER 0.00127 MIN. NICKEL
 - PRODUCT SPECIFICATION: PS-42815-001.
 - PACKAGING INFORMATION: PK-42815-001.
 - PART IS DESIGN IN METRIC.
 - TERMINALS FOR USE WITH STRANDED WIRE ONLY. STRANDED TINNED WIRE IS RECOMMENDED.
 - AFTER CRIMPING, THIS DIMENSION = 3.55mm MIN.
 - AFTER CRIMPING, THIS DIMENSION = 2.25mm MAX.
 - CRIMP SPECIFICATION: 638301000.
 - WHEN USING TIN-PLATED TERMINALS FOR APPLICATIONS INVOLVING VIBRATION AND/OR THERMAL CYCLING, MOLEX STRONGLY RECOMMENDS THE USE OF NYE LUBRICANT, NYOGEL 760G, ON THE MATING AREA OF THE TERMINAL. LUBRICANT SHOULD BE APPLIED AFTER THE TERMINALS ARE INSERTED INTO THE HOUSING.
 - PARTS CONFORM TO CLASS 'B' REQUIREMENT OF COSMETIC SPEC PS-45499-002.
 - REFER AS-42815-001 FOR TIN PLATED TERMINALS RECOMMENDED LUBRICATION PROCEDURE.



SECTION A-A
INSULATOR CRIMP



SECTION B-B
CONDUCTOR CRIMP

MATERIAL NO.	CONFIGURATION	DIM. "A"	PLATING	STATUS
42817-0041	STANDARD	27.60	TIN	PLANNED FOR
42817-0141	MAKE-FIRST/BREAK-LAST	29.60	TIN	OBSOLESCENCE
42817-0042	STANDARD	27.60	SELECT GOLD	ACTIVE
42817-0142	MAKE-FIRST/BREAK-LAST	29.60	SELECT GOLD	ACTIVE
42817-1044	STANDARD	27.60	SELECT SILVER	ACTIVE
42817-1144	MAKE-FIRST/BREAK-LAST	29.60	SELECT SILVER	ACTIVE

NEW SILVER PLATING PARTS ADDED EC NO: 00P2015-2752	QUALITY SYMBOLS	GENERAL TOLERANCES (UNLESS SPECIFIED)		DIMENSION STYLE		SCALE	DESIGN UNITS	THIRD ANGLE PROJECTION
		mm	INCH	MM ONLY	TITLE			
DRW: MBRO2 2015/12/24 CHKD: APPROX/PRASAD 2015/02/09 REV: B3	▽=0	4 PLACES	± --- ± ---	DRAWN BY	DATE	4:1	METRIC	MINIFIT SR. MALE CRIMP TERMINAL, 14-16 AWG
	▽=0	3 PLACES	± --- ± ---	CHECKED BY	DATE			
	▽=0	2 PLACES	± 0.25 ± ---	JCOMERC I	2002/05/15			
	▽=0	1 PLACE	± 0.40 ± ---	APPROVED BY	DATE			
	▽=0	0 PLACE	± ±	JCOMERC I	2002/05/15			
ANGULAR ±1/2°		DRAFT WHERE APPLICABLE MUST REMAIN WITHIN DIMENSIONS		SEE CHART		MATERIAL NO. DOCUMENT NO.		SHEET NO.
						SD-42817-020		1 OF 1

