

Excellent Integrated System Limited

Stocking Distributor

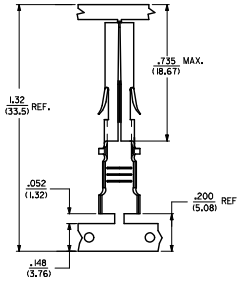
Click to view price, real time Inventory, Delivery & Lifecycle Information:

[Molex Connector Corporation](#)
[0428254003](#)

For any questions, you can email us directly:

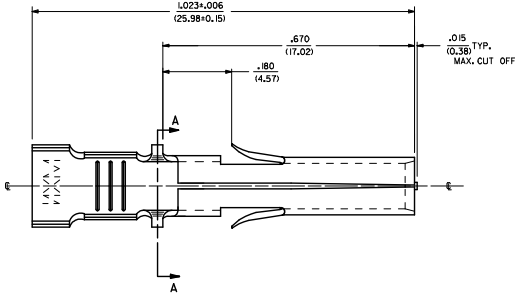
sales@integrated-circuit.com

| | | | | | |
|------------|------------|---------------------------|--------------------------------------|-----------------|-------------|
| ITEM NO. | CRIMP SIZE | MATERIAL | PLATING | PACKAGING | 'D' |
| 42825-4002 | 12 AWG | .0160(10.406) THICK BRASS | PRE-TINNED .000020 (0.0005) MIN. TIN | SHIPPED ON REEL | .225 (5.72) |

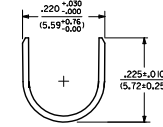
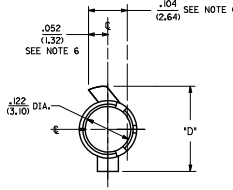


STRIP AND CARRIER LAYOUT
SCALE 4:1

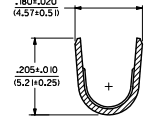
- NOTES:
1. MATERIAL: SEE CHART
 2. FINISH: SEE CHART
 3. PRODUCT SPECIFICATION: PS-40585
 4. PACKAGING: SEE CHART
 5. REELS OF THESE TERMINALS CANNOT HAVE MECHANICAL SPLICES. INDICATED FOR BOTH LOCK AND STOP TABS.
 6. USING SEAM LINE AS VERTICAL CENTERLINE INDICATOR-MAXIMUM EXCURSION FROM HORIZONTAL CENTERLINE IS
 7. THIS TERMINAL FOR USE IN HOUSING NO'S. 40585-1-5, 40585-3000, 43032-3300, 43032-3400, AND 43032-3500.
 8. TERMINALS FOR USE WITH STRANDED WIRE.
 9. PARTS CONFORM TO CLASS B REQUIREMENTS OF COSMETIC SPECIFICATION PS-45499-002.



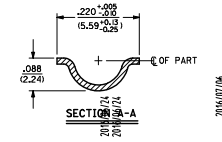
12 AWG TERMINAL SHOWN



INSULATION CRIMP DETAIL



SECTION B-B



SECTION A-A

2016/07/06

| | | | | | | |
|--|--|--|---|------------------|--------------|------------------------|
| REMOVE OBSOLETE EC NO. 1167204-4896 DRAWN BY: BAPPELDORN CHECKED BY: SBR APPROVED BY: FSM1TH | QUALITY SYMBOLS | GENERAL TOLERANCES (UNLESS SPECIFIED) | DIMENSION STYLE | SCALE | DESIGN UNITS | THIRD ANGLE PROJECTION |
| | $\nabla=0$ $\nabla=0$ $\nabla=0$ | mm INCH 4 PLACES ±.005 3 PLACES ±.01 2 PLACES ±.025 1 PLACE ±.05 0 PLACE ±.125 ANGULAR ±1/2° | IN/MM DRAWN BY: BAPPELDORN DATE: 2016/06/24 CHECKED BY: SBR DATE: 91/03/08 APPROVED BY: FSM1TH DATE: 2016/07/06 | 8:1 | INCH | |
| | DRAFT WHERE APPLICABLE MUST REMAIN WITHIN DIMENSIONS | SEE CHART | TITLE: TERMINAL SOCKET .125 (3.18) DIA. | | | |
| | | | DOCUMENT NO. SD-42825-40** | SHEET NO. 1 OF 1 | | |