

Excellent Integrated System Limited

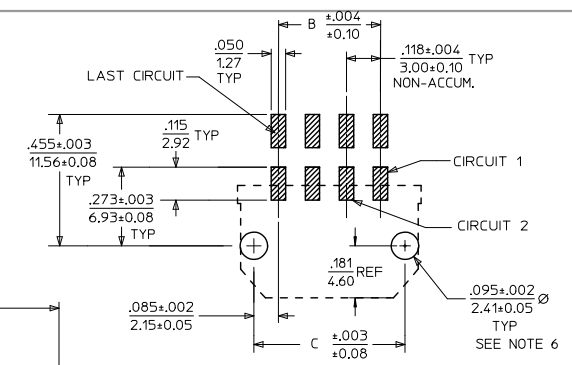
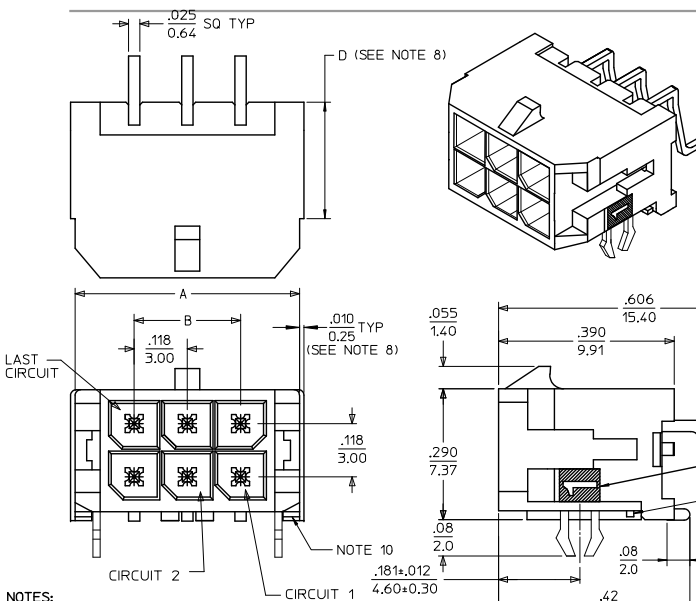
Stocking Distributor

Click to view price, real time Inventory, Delivery & Lifecycle Information:

[Molex Connector Corporation](#)
[0430451808](#)

For any questions, you can email us directly:

sales@integrated-circuit.com

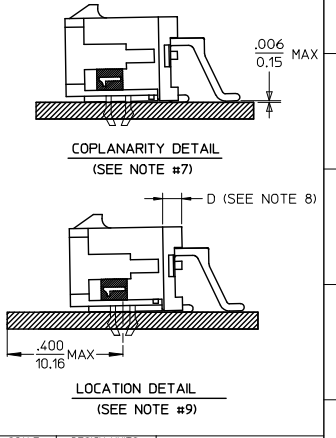


CKTS	A			B			C		
02	.262		.169	6.65	NA	4.30			
04	.380	.118	.287	9.65	3.00	7.30			
06	.498	.236	.405	12.65	6.00	10.30			
08	.616	.354	.524	15.65	9.00	13.30			
10	.734	.472	.642	18.65	12.00	16.30			
12	.852	.591	.760	21.65	15.00	19.30			
14	.970	.709	.878	24.65	18.00	22.30			
16	1.088	.827	.996	27.65	21.00	25.30			
18	1.206	.945	1.114	30.65	24.00	28.30			
20	1.325	1.063	1.232	33.65	27.00	31.30			
22	1.443	1.181	1.350	36.65	30.00	34.30			
24	1.561	1.299	1.469	39.65	33.00	37.30			

NOTES:

- HOUSING MATERIAL: GLASS FILLED LIQUID CRYSTAL POLYMER, UL94V-0. COLOR: BLACK
TERMINAL MATERIAL: BRASS ALLOY
- FINISH: A = .000060/(0.00152) MIN. REFLOWED MATTE TIN OVER .000050/(0.00127) MIN. NICKEL PLATE. (FINISH IS BRIGHT IN APPEARANCE. THICKNESS AS APPLIED PRIOR TO REFLOW).
B = .000015/(0.00038) MIN. SELECT GOLD IN CONTACT AREA, .000100/(0.00254) MIN. SELECT MATTE TIN ON SOLDER TAILS, BOTH OVER .000050/(0.00127) MIN. NICKEL PLATE.
C = .000030/(0.00076) MIN. SELECT GOLD IN CONTACT AREA, .000100/(0.00254) MIN. SELECT MATTE TIN ON SOLDER TAILS, BOTH OVER .000050/(0.00127) MIN. NICKEL PLATE.
D = .000100/(0.00254) MIN. MATTE TIN OVER .000050/(0.00127) MIN. NICKEL PLATE.
- PRODUCT SPECIFICATION: PS-43045
- TAPE AND REEL PACK: SEE MOLEX DRAWING PK-70873-05**
- MATES WITH MICRO FIT (3.0) RECEPTACLE SERIES 43025
- TO MINIMIZE INSERTION FORCE OF MOUNTING CLIPS DURING ROBOTIC PLACEMENT THE HOLE DIAMETER SHOULD BE INCREASED TO .108±.002 / 2.74±0.05 AND THEN EVALUATED PER PLACEMENT EQUIPMENT.
- THE COPLANARITY DIMENSION IS ESTABLISHED BY PLACING THE ASSEMBLY ON A FLAT SURFACE. THE DISTANCE FROM THAT SURFACE TO THE BOTTOM OF ANY TERMINAL MUST NOT EXCEED .006/0.15
- CIRCUIT SIZES 2-6: 'D' IS .265/6.74 FOR .010/0.25 STEP.
CIRCUIT SIZES 8-24: 'D' IS .063/1.60 FOR .010/0.25 STEP.
- TO AVOID INTERFERENCE BETWEEN RECEPTACLE AND PCB, HEADER MUST BE PLACED WITHIN .400/(10.16) MAX. FROM EDGE OF PCB, AS SHOWN IN LOCATION DETAIL.
- METAL TAB MAY BE FLUSH WITH PCB.
- THIS PART CONFORMS TO CLASS B REQUIREMENTS OF COSMETIC SPECIFICATION PS-45499-002.

CKTS	MATERIAL NO.	VOID CKT	FINISH A	FINISH B	FINISH C	FINISH D
			MATERIAL NO.	MATERIAL NO.	MATERIAL NO.	MATERIAL NO.
02	43045-0206		43045-0207	43045-0208	43045-0300	
04	43045-0406		43045-0407	43045-0408	43045-0503	
06	43045-0606		43045-0607	43045-0608	43045-0703	
08	43045-0806		43045-0807	43045-0808	43045-0903	
10	43045-1006		43045-1007	43045-1008	43045-1103	
12	43045-1206		43045-1207	43045-1208	43045-1303	
14	43045-1406		43045-1407	43045-1408	43045-1503	
16	43045-1606		43045-1607	43045-1608	43045-1703	
18	43045-1806		43045-1807	43045-1808	43045-1903	
20	43045-2006		43045-2007	43045-2008	43045-2103	
22	43045-2206		43045-2207	43045-2208	43045-2303	
24	43045-2406		43045-2407	43045-2408	43045-2503	
12	43045-9206	3.4 9.10				
16	43045-9606	4.5 12.13				



REVISE FINISH A REC NO: UCP2016-2797 DRAWN: SLAFTER 2016/01/15 CHKD: JDOX 2016/01/15 APPR: SMITH 2016/02/26 G5	QUALITY SYMBOLS ∇=0 ∇=0 ∇=0	GENERAL TOLERANCES (UNLESS SPECIFIED) DIMENSION STYLE IN/MM SCALE --- DESIGN UNITS METRIC THIRD ANGLE PROJECTION	DRAWN BY: SAMIEC DATE: 2000/03/15 CHECKED BY: MUELLER DATE: 2000/03/15 APPROVED BY: F SMITH DATE: 2016/02/26	TITLE: MICRO FIT (3.0) DUAL ROW RIGHT ANGLE SMT HEADER W/CLIPS ASS'Y molex	MATERIAL NO. SD-43045-003 DOCUMENT NO. SD-43045-003	SHEET NO. 1 OF 1				
							ANGLUAR ±1/2° DRAFT WHERE APPLICABLE MUST REMAIN WITHIN DIMENSIONS		SEE CHART	THIS DRAWING CONTAINS INFORMATION THAT IS PROPRIETARY TO MOLEX INCORPORATED AND SHOULD NOT BE USED WITHOUT WRITTEN PERMISSION