

Excellent Integrated System Limited

Stocking Distributor

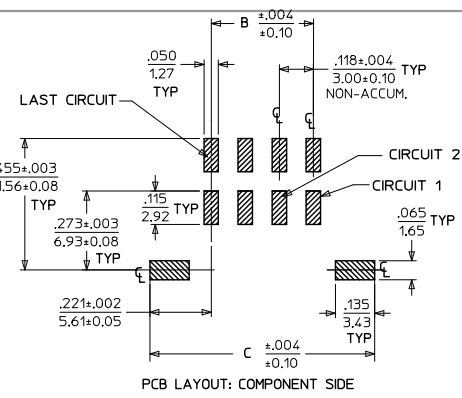
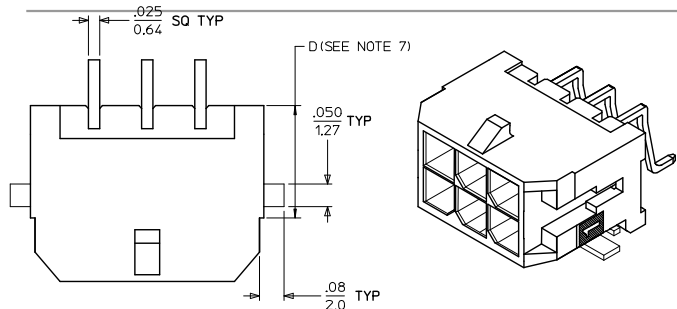
Click to view price, real time Inventory, Delivery & Lifecycle Information:

[Molex Connector Corporation](#)
[0430452209](#)

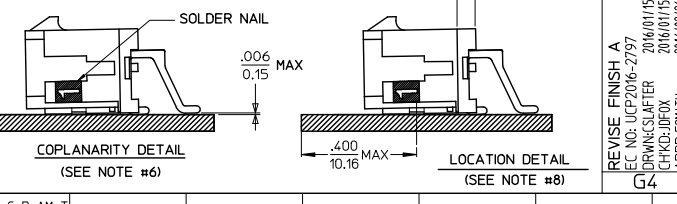
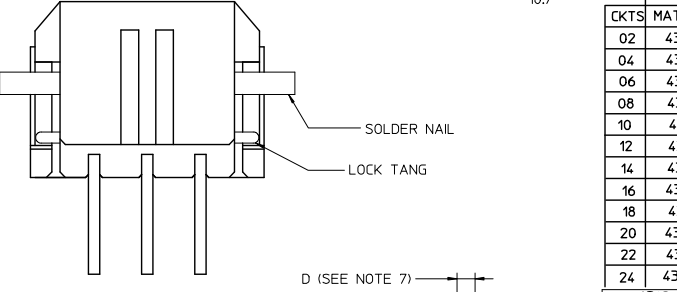
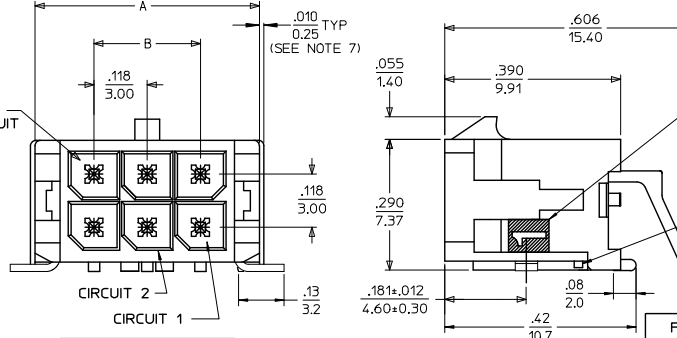
For any questions, you can email us directly:

sales@integrated-circuit.com

13 12 11 10 9 8 7 6 5 4 3 2 1



| CKTS | A | B | C |
|------|-------|-------|-------|
| 02 | .262 | | .441 |
| | 6.65 | NA | 11.20 |
| 04 | .380 | .118 | .559 |
| | 9.65 | 3.00 | 14.20 |
| 06 | .498 | .236 | .677 |
| | 12.65 | 6.00 | 17.20 |
| 08 | .616 | .354 | .795 |
| | 15.65 | 9.00 | 20.20 |
| 10 | .734 | .472 | .913 |
| | 18.65 | 12.00 | 23.20 |
| 12 | .852 | .591 | 1.031 |
| | 21.65 | 15.00 | 26.20 |
| 14 | .970 | .709 | 1.150 |
| | 24.65 | 18.00 | 29.20 |
| 16 | 1.088 | .827 | 1.268 |
| | 27.65 | 21.00 | 32.20 |
| 18 | 1.206 | .945 | 1.386 |
| | 30.65 | 24.00 | 35.20 |
| 20 | 1.325 | 1.063 | 1.504 |
| | 33.65 | 27.00 | 38.20 |
| 22 | 1.443 | 1.181 | 1.622 |
| | 36.65 | 30.00 | 41.20 |
| 24 | 1.561 | 1.299 | 1.740 |
| | 39.65 | 33.00 | 44.20 |



NOTES:

- HOUSING MATERIAL: GLASS FILLED LIQUID CRYSTAL POLYMER UL94V-0. COLOR: BLACK. TERMINAL MATERIAL: BRASS ALLOY
- FINISH: A = .000060/(0.00152) MIN. REFLOWED MATTE TIN OVER .000050/(0.00127) MIN. NICKLE PLATE. (FINISH IS BRIGHT IN APPEARANCE, THICKNESS AS APPLIED PRIOR TO REFLOW). B = .000015/(0.00038) MIN. GOLD IN SELECTIVE AREA, .000100/(0.00254) MIN. MATTE TIN ON SOLDER TAILS, BOTH OVER .000050/(0.00127) MIN. NICKLE PLATE. C = .000030/(0.00076) MIN. GOLD IN SELECTIVE AREA, .000100/(0.00254) MIN. MATTE TIN ON SOLDER TAILS, BOTH OVER .000050/(0.00127) MIN. NICKLE PLATE.
- PRODUCT SPECIFICATION: PS-43045
- TAPE AND REEL PACK: SEE MOLEX DRAWING PK-70873-05**
- MATES WITH MOLEX RECEPTACLE SERIES 43025
- THE COPLANARITY DIMENSION IS ESTABLISHED BY PLACING THE ASSEMBLY ON A FLAT SURFACE. THE DISTANCE FROM THAT SURFACE TO THE BOTTOM OF ANY TERMINAL OR NAIL MUST NOT EXCEED .006/0.15.
- CIRCUIT SIZES 2-6: 'D' IS 0.265/6.74 FOR .010/0.25 STEP. CIRCUIT SIZES 8-24: 'D' IS .063/1.60 FOR .010/0.25 STEP.
- TO AVOID INTERFERENCE BETWEEN RECEPTACLE AND PCB, HEADER MUST BE PLACED WITHIN .400/(10.16) MAX. FROM EDGE OF PCB, AS SHOWN IN LOCATION DETAIL.
- METAL TAB MAY BE FLUSH WITH PCB.
- THIS PART CONFORMS TO CLASS B REQUIREMENTS OF COSMETIC SPECIFICATION PS-45499-002.

| CKTS | FINISH A MATERIAL NO: | FINISH B MATERIAL NO: | FINISH C MATERIAL NO: |
|------|-----------------------|-----------------------|-----------------------|
| 02 | 43045-0209 | 43045-0210 | 43045-0211 |
| 04 | 43045-0409 | 43045-0410 | 43045-0411 |
| 06 | 43045-0609 | 43045-0610 | 43045-0611 |
| 08 | 43045-0809 | 43045-0810 | 43045-0811 |
| 10 | 43045-1009 | 43045-1010 | 43045-1011 |
| 12 | 43045-1209 | 43045-1210 | 43045-1211 |
| 14 | 43045-1409 | 43045-1410 | 43045-1411 |
| 16 | 43045-1609 | 43045-1610 | 43045-1611 |
| 18 | 43045-1809 | 43045-1810 | 43045-1811 |
| 20 | 43045-2009 | 43045-2010 | 43045-2011 |
| 22 | 43045-2209 | 43045-2210 | 43045-2211 |
| 24 | 43045-2409 | 43045-2410 | 43045-2411 |

| REVISE FINISH A | DESCRIPTION | QUALITY SYMBOLS | GENERAL TOLERANCES (UNLESS SPECIFIED) | | DIMENSION STYLE | | SCALE | DESIGN UNITS | THIRD ANGLE PROJECTION |
|---|-------------|-----------------|---------------------------------------|-------|-----------------|------------|--------------------------|--------------|------------------------|
| | | | mm | INCH | IN/MM | --- | METRIC | ☐ | |
| 4 PLACES | | ▽=0 | ±.010 | ±.010 | DRAWN BY | DATE | TITLE | | |
| 3 PLACES | | ▽=0 | ±.010 | ±.010 | SAMIEC | 2000/03/15 | MICRO FIT (3.0) | | |
| 2 PLACES | | ▽=0 | ±.010 | ±.010 | MUELLER | 2000/03/15 | DUAL ROW RIGHT ANGLE SMT | | |
| 1 PLACE | | ▽=0 | ±.010 | ±.010 | APPROVED BY | DATE | HEADER W/NAILS ASS'Y | | |
| 0 PLACE | | ▽=0 | ±.010 | ±.010 | FSMITH | 2016/02/26 | molex | | |
| ANGULAR ±1/2° | | | MATERIAL NO. | | DOCUMENT NO. | | SHEET NO. | | |
| DRAFT WHERE APPLICABLE MUST REMAIN WITHIN DIMENSIONS | | | SEE CHART | | SD-43045-004 | | 1 OF 1 | | |
| THIS DRAWING CONTAINS INFORMATION THAT IS PROPRIETARY TO MOLEX INCORPORATED AND SHOULD NOT BE USED WITHOUT WRITTEN PERMISSION | | | | | | | | | |

12 11 10 9 8 7 6 5 4 3 2 1