

Excellent Integrated System Limited

Stocking Distributor

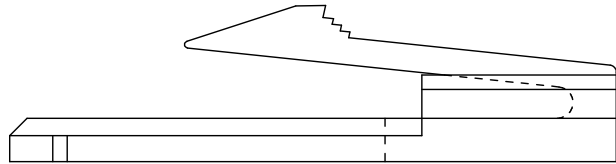
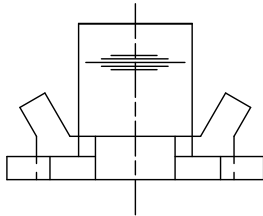
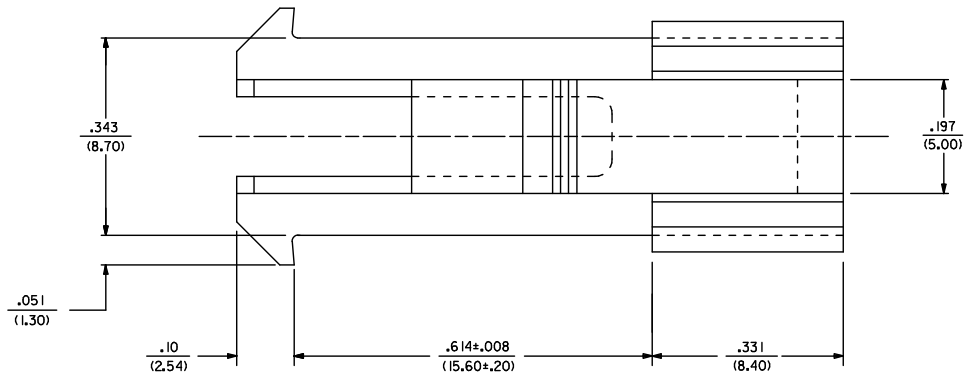
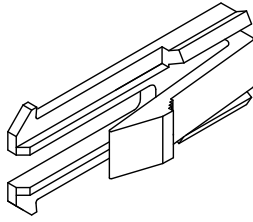
Click to view price, real time Inventory, Delivery & Lifecycle Information:

[Molex Connector Corporation](#)
[0431300001](#)

For any questions, you can email us directly:

sales@integrated-circuit.com

13 12 11 10 9 8 7 6 5 4 3 2 1



NOTES:

- 1) MATERIAL: UNFILLED POLYESTER, U.L. 94V-0, COLOR: BLACK.
- 2) PART IS FOR USE WITH PLUG HOUSING 30068.
- 3) PRODUCT SPECIFICATION: PS-5556-003.
- 4) PACKAGING SPECIFICATION: PK-43130-001.

CORRECT DIMENSION DEC NO: UCP2015-1224 DRAWN: JFOX 2014/09/23 CHKD: BELL 2014/09/23 APPR: SMITH 2016/04/11	QUALITY SYMBOLS ∇=0 ∇=0 ∇=0	GENERAL TOLERANCES (UNLESS SPECIFIED)		DIMENSION STYLE		SCALE	DESIGN UNITS	THIRD ANGLE PROJECTION		
			mm	INCH	IN/MM		8:1	METRIC		
		4 PLACES	±---	±---	DRAWN BY	DATE	TITLE MOUNTING EAR FOR PLUG HOUSING. (MINI-FIT T.P.A. SERIES)			
		3 PLACES	±---	±.010	RJF	10/13/1992				
2 PLACES	±0.25	±.015	CHECKED BY	DATE	MOLEX INCORPORATED					
1 PLACE	±0.38	±---	RJF	10/13/1992						
ANGULAR ±1/2°		APPROVED BY		DATE	MATERIAL NO.		DOCUMENT NO.		SHEET NO.	
DRAFT WHERE APPLICABLE MUST REMAIN WITHIN DIMENSIONS		RAS		10/13/1992	43130-0001		SD-43130-0001		1 OF 1	
SIZE C THIS DRAWING CONTAINS INFORMATION THAT IS PROPRIETARY TO MOLEX INCORPORATED AND SHOULD NOT BE USED WITHOUT WRITTEN PERMISSION										

1b_frame_C_P_ME_T Rev. F. 2009/06/18 12 11 10 9 8 7 6 5 4 3 2 1