

Excellent Integrated System Limited

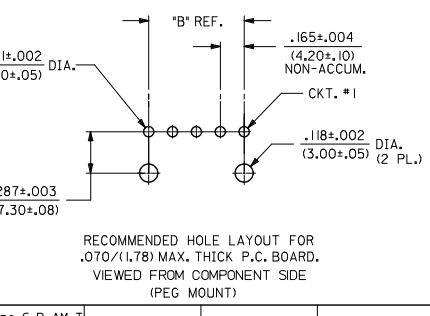
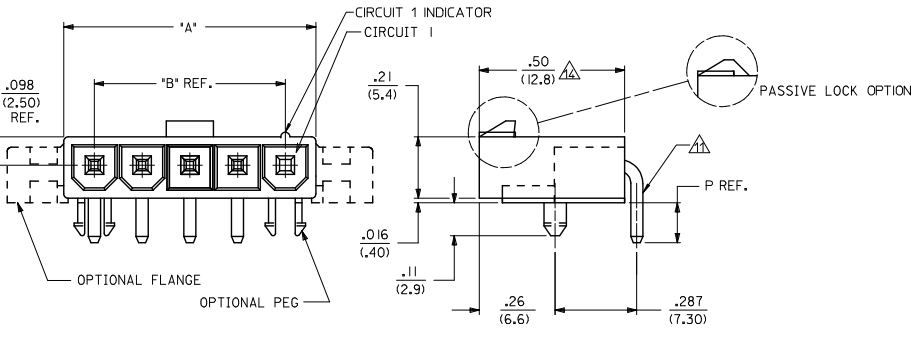
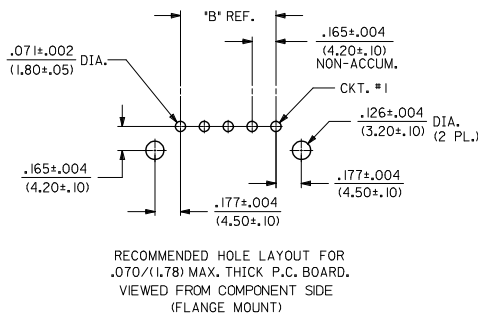
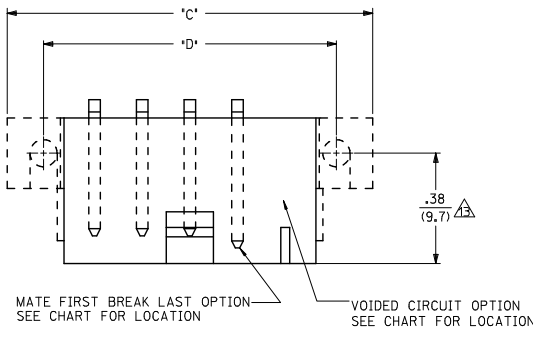
Stocking Distributor

Click to view price, real time Inventory, Delivery & Lifecycle Information:

[Molex Connector Corporation](#)
[0432320006](#)

For any questions, you can email us directly:

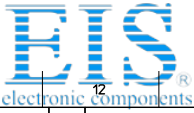
sales@integrated-circuit.com



CIRCUIT SIZE	DIM. 'A'	DIM. 'B'	DIM. 'C'	DIM. 'D'
2	.378 (9.60)	.165 (4.20)	.772 (19.60)	.520 (13.20)
3	.543 (13.80)	.331 (8.40)	.937 (23.80)	.685 (17.40)
4	.709 (18.00)	.496 (12.60)	1.102 (28.00)	.850 (21.60)
5	.874 (22.20)	.661 (16.80)	1.268 (32.20)	1.016 (25.80)
6	1.039 (26.40)	.827 (21.00)	1.433 (36.40)	1.181 (30.00)
7	1.205 (30.60)	.992 (25.20)	1.598 (40.60)	1.346 (34.20)
8	1.370 (34.80)	1.157 (29.40)	1.764 (44.80)	1.512 (38.40)
9	1.535 (39.00)	1.323 (33.60)	1.929 (49.00)	1.677 (42.60)
10	1.701 (43.20)	1.488 (37.80)	2.094 (53.20)	1.843 (46.80)
11	1.866 (47.40)	1.654 (42.00)	2.260 (57.40)	2.008 (51.00)
12	2.031 (51.60)	1.819 (46.20)	2.425 (61.60)	2.173 (55.20)

- NOTES:
- MATERIAL: HOUSING: A - NYLON 6/6, UL 94V-2, LOW HALOGEN, COLOR: NATURAL B - NYLON 6/6, UL 94V-0, LOW HALOGEN, COLOR: NATURAL D - NYLON 6/6, UL 94V-0, LOW HALOGEN, COLOR: BLACK TERMINALS: BRASS
 - FINISH (TERMINAL PLATING): A - .000100/(0.00254) MIN. MATTE TIN OVER .000050/(0.0127) MIN. NICKEL OVERALL. B - .000030/(0.00076) MIN. SELECT GOLD AND .000100/(0.00254) MIN. SELECT MATTE TIN OVER .000050/(0.00127) MIN. NICKEL OVERALL
 - PRODUCT SPECIFICATION: PS-5556-001
 - PACKAGING: BULK PACKAGED PER PK-5569-002 TRAY PACKAGED PER PK-5569-005
 - PART MATES WITH MINI-FIT JR. RECEPTACLE #5557.
 - MOUNTING OPTIONS: 1 - PEGS 2 - FLANGES
 - LOCK RAMP STYLES: 1 - POSITIVE LOCK 2 - PASSIVE LOCK
 - PARTS ARE NOT TO BE MATED OR UNMATED WHILE CIRCUITS ARE LIVE.
 - PART IS NOT DESIGNED FOR CURRENT SHARING.
 - PART CONFORMS TO CLASS 'B' REQUIREMENTS OF COSMETIC SPECIFICATION PS-45499-002.
 - FORMING MARKS ARE ACCEPTABLE
 - DISCOLORATION IN THE BANDOLIER CARRIER AREA OF THE PIN IS INHERENT TO THE PLATING PROCESS AND IS DUE TO THE MASKING EFFECT OF THE CARRIER. THIS DISCOLORATION IS IN A NON-FUNCTIONAL AREA OF THE PIN AND WILL NOT AFFECT THE PERFORMANCE OF THE HEADER ASSEMBLY.
 - FOR 3 CKT PART NUMBERS, THIS DIMENSION IS .37/9.35 FOR 3 CKT PART NUMBERS, THIS DIMENSION IS .49/12.45

ADD TRAY PKGING EC NO: UCP2016-0235 DRWNG: JOMIT 2015/10/27 CHKD: BELL 2015/10/27 APPR: SMITH 2015/12/14 DESCRIPTION:	QUALITY SYMBOLS 	GENERAL TOLERANCES (UNLESS SPECIFIED)		DIMENSION STYLE		SCALE	DESIGN UNITS	THIRD ANGLE PROJECTION
		4 PLACES ± --- ± ---	3 PLACES ± --- ± .015	IN/MM		4:1	METRIC	
		2 PLACES ± 0.38 ± ---	1 PLACE ± --- ± ---	DRAWN BY: POLGAR DATE: 1993/02/01	TITLE: MINI-FIT JR. SINGLE ROW HEADER WITH MF/BL AND VOIDED CIRCUITS OPTION			
		ANGULAR ± 1/2°		CHECKED BY: FRY DATE: 1993/02/01	MOLEX INCORPORATED			
DRAFT WHERE APPLICABLE MUST REMAIN WITHIN DIMENSIONS	MATERIAL NO. SEE SHEET 2	APPROVED BY: SMITH DATE: 2011/06/21	MOLEX INCORPORATED	DOCUMENT NO. SDA-43232-*	SHEET NO. 1 OF 2			



Distributor of Molex Connector Corporation: Excellent Integrated System Limited

Datasheet of 0432320006 - MINIFIT HDR 5CKT TIN MF/BL

Contact us: sales@integrated-circuit.com Website: www.integrated-circuit.com

ITEM NO.	CKT. SIZE	CHARACTERISTIC DESCRIPTION	HOUSING OPTION	PLATING	LETTER INDICATES PIN OPTION AT EACH CKT. SEE NOTE 2												DIM. P. REF.	PACKAGING
					1	2	3	4	5	6	7	8	9	10	11	12		
432320001	05	05A IA I	PEG	A	SA	SA	V	SA	SA	-	-	-	-	-	-	.138/3.50	BULK	
432320002	05	05A IA I	PEG	A	MA	SA	SA	SA	SA	-	-	-	-	-	-	.138/3.50	BULK	
432320003	05	05B IA I	PEG	A	MA	SA	SA	SA	SA	-	-	-	-	-	-	.138/3.50	BULK	
432320004	05	05B IA I	PEG	A	SA	V	SA	V	MA	-	-	-	-	-	-	.138/3.50	BULK	
432320005	05	05A IA I	PEG	A	SA	V	SA	SA	SA	-	-	-	-	-	-	.138/3.50	BULK	
432320006	05	05B IA I	PEG	A	SA	SA	SA	V	MA	-	-	-	-	-	-	.138/3.50	BULK	
432320007	04	04B1A1	PEG	A	SA	MA	MA	SA	-	-	-	-	-	-	-	.138/3.50	BULK	
432320008	04	04B1A1	PEG	A	MA	SA	SA	MA	-	-	-	-	-	-	-	.138/3.50	BULK	
432320009	03	03B1A1	PEG	A	SA	V	SA	-	-	-	-	-	-	-	-	.138/3.50	BULK	
432320010	03	03B1B1	PEG	B	SB	V	SB	-	-	-	-	-	-	-	-	.138/3.50	BULK	
432320011	05	05B1B1	PEG	B	SB	SB	V	SB	SB	-	-	-	-	-	-	.138/3.50	BULK	
432320012	05	05A1A1	PEG	A	SA	SA	SA	V	SA	-	-	-	-	-	-	.138/3.50	BULK	
432320013	03	03B1A1	PEG	A	SA	SA	SA	-	-	-	-	-	-	-	-	.31/8.0	TRAY	
432320014	05	05B1A1	PEG	A	SA	SA	SA	SA	SA	-	-	-	-	-	-	.31/8.0	TRAY	
432320016	05	05A1A1	PEG	A	SA	V	V	SA	-	-	-	-	-	-	-	.138/3.50	BULK	
432320017	04	04B1A1	PEG	A	SA	V	V	SA	-	-	-	-	-	-	-	.138/3.50	BULK	
432320018	04	04B1B1	PEG	B	SB	V	V	SB	-	-	-	-	-	-	-	.138/3.50	BULK	
432320019	05	05B1A1	PEG	A	SA	V	SA	V	SA	-	-	-	-	-	-	.138/3.50	BULK	
432320020	03	03D1A1	PEG	A	SA	V	SA	-	-	-	-	-	-	-	-	.138/3.50	BULK	
432320021	05	05B1A1	PEG	A	SA	V	V	SA	V	-	-	-	-	-	-	.138/3.50	BULK	
432320022	03	03B1A1	PEG	A	SA	SA	SA	-	-	-	-	-	-	-	-	.18/4.5	BULK	

PIN OPTION LEGEND		
CODE	PIN TYPE	PLATING
SA	STANDARD	MATTE TIN
MA	MF/BL	MATTE TIN
SB	STANDARD	SELECT GOLD
MB	MF/BL	SELECT GOLD
V	VOID	

CHARACTERISTICS LEGEND:

CIRCUIT SIZE (02-12) _____

HOUSING MATERIAL _____

A = NYLON 6/6, U.L. 94V-2, COLOR: NATURAL
 B = NYLON 6/6, U.L. 94V-0, COLOR: NATURAL
 D = NYLON 6/6, U.L. 94V-0, COLOR: BLACK

MOUNTING OPTION _____

1 = PEGS
 2 = FLANGES

PLATING COMBINATION _____

A = MATTE TIN OVER NICKEL
 B = SELECT GOLD AND SELECT MATTE TIN OVER NICKEL OVERALL

LOCK RAMP STYLE _____

1 = POSITIVE LOCK
 2 = PASSIVE LOCK

SEE SHEET 1 EC NO: UCP2016-0295 DRAWN: JONTI 2015/10/27 CHKD: BELL 2015/10/27 APPR: SMITH 2015/12/14	QUALITY SYMBOLS 	GENERAL TOLERANCES (UNLESS SPECIFIED)		DIMENSION STYLE		SCALE	DESIGN UNITS	THIRD ANGLE PROJECTION	
				IN/MM		1:1	METRIC		
		4 PLACES ±---	±---	DRAWN BY	DATE	TITLE			
		3 PLACES ±---	±.015	POLGAR	1993/02/01	MINI-FIT JR. SINGLE ROW HEADER WITH MF/BL AND VOIDED CIRCUITS OPTION			
2 PLACES ±0.38	±---	CHECKED BY	DATE	MOLEX INCORPORATED					
1 PLACE ±---	±---	FRY	1993/02/01						
ANGULAR ±1/2°		APPROVED BY	DATE						
		FSMITH	2011/06/21						
DRAFT WHERE APPLICABLE MUST REMAIN WITHIN DIMENSIONS		MATERIAL NO.	DOCUMENT NO.	SHEET NO.					
		SEE CHART	SDA-43232-*	2 OF 2					
		THIS DRAWING CONTAINS INFORMATION THAT IS PROPRIETARY TO MOLEX INCORPORATED AND SHOULD NOT BE USED WITHOUT WRITTEN PERMISSION							