

## Excellent Integrated System Limited

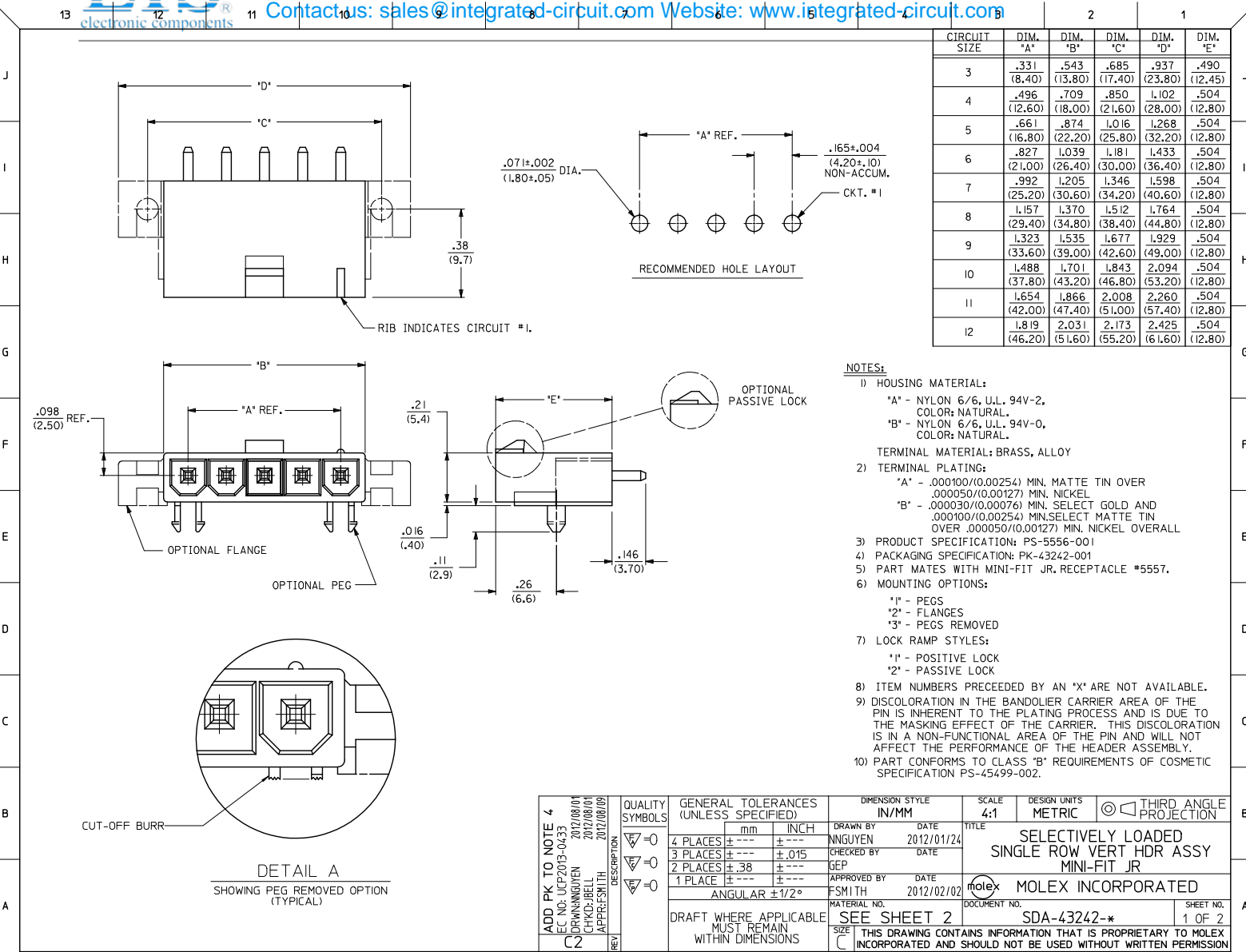
Stocking Distributor

Click to view price, real time Inventory, Delivery & Lifecycle Information:

[Molex Connector Corporation](#)  
[0432420005](#)

For any questions, you can email us directly:

[sales@integrated-circuit.com](mailto:sales@integrated-circuit.com)



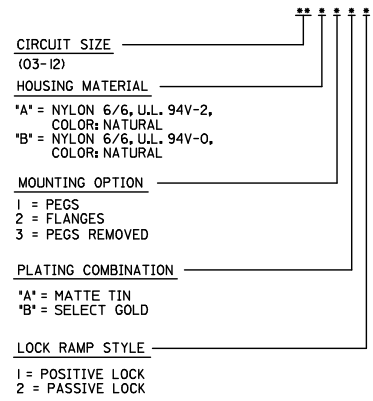
CIRCUIT SIZE	DIM. 'A'	DIM. 'B'	DIM. 'C'	DIM. 'D'	DIM. 'E'
3	.331 (8.40)	.543 (13.80)	.685 (17.40)	.937 (23.80)	.490 (12.45)
4	.496 (12.60)	.709 (18.00)	.850 (21.60)	1.102 (28.00)	.504 (12.80)
5	.661 (16.80)	.874 (22.20)	1.016 (25.80)	1.268 (32.20)	.504 (12.80)
6	.827 (21.00)	1.039 (26.40)	1.181 (30.00)	1.433 (36.40)	.504 (12.80)
7	.992 (25.20)	1.205 (30.60)	1.346 (34.20)	1.598 (40.60)	.504 (12.80)
8	1.157 (29.40)	1.370 (34.80)	1.512 (38.40)	1.764 (44.80)	.504 (12.80)
9	1.323 (33.60)	1.535 (39.00)	1.677 (42.60)	1.929 (49.00)	.504 (12.80)
10	1.488 (37.80)	1.701 (43.20)	1.843 (46.80)	2.094 (53.20)	.504 (12.80)
11	1.654 (42.00)	1.866 (47.40)	2.008 (51.00)	2.260 (57.40)	.504 (12.80)
12	1.819 (46.20)	2.031 (51.60)	2.173 (55.20)	2.425 (61.60)	.504 (12.80)

- NOTES:**
- HOUSING MATERIAL:  
 \*A\* - NYLON 6/6, U.L. 94V-2, COLOR: NATURAL.  
 \*B\* - NYLON 6/6, U.L. 94V-0, COLOR: NATURAL.  
 TERMINAL MATERIAL: BRASS, ALLOY
  - TERMINAL PLATING:  
 \*A\* - .000100/(0.00254) MIN. MATTE TIN OVER .000050/(0.00127) MIN. NICKEL  
 \*B\* - .000030/(0.00076) MIN. SELECT GOLD AND .000100/(0.00254) MIN. SELECT MATTE TIN OVER .000050/(0.00127) MIN. NICKEL OVERALL
  - PRODUCT SPECIFICATION: PS-5556-001
  - PACKAGING SPECIFICATION: PK-43242-001
  - PART MATES WITH MINI-FIT JR. RECEPTACLE #5557.
  - MOUNTING OPTIONS:  
 \*1\* - PEGS  
 \*2\* - FLANGES  
 \*3\* - PEGS REMOVED
  - LOCK RAMP STYLES:  
 \*1\* - POSITIVE LOCK  
 \*2\* - PASSIVE LOCK
  - ITEM NUMBERS PRECEDED BY AN 'X' ARE NOT AVAILABLE.
  - DISCOLORATION IN THE BANDOLIER CARRIER AREA OF THE PIN IS INHERENT TO THE PLATING PROCESS AND IS DUE TO THE MASKING EFFECT OF THE CARRIER. THIS DISCOLORATION IS IN A NON-FUNCTIONAL AREA OF THE PIN AND WILL NOT AFFECT THE PERFORMANCE OF THE HEADER ASSEMBLY.
  - PART CONFORMS TO CLASS 'B' REQUIREMENTS OF COSMETIC SPECIFICATION PS-45499-002.

ADD PK TO NOTE 4 EC NO: UCP2013-0433 DRW: NGUYEN 2012/08/01 CHKD: BELL 2012/08/01 APPR: SMITH 2012/08/09	QUALITY SYMBOLS □=0 □=0 □=0	GENERAL TOLERANCES (UNLESS SPECIFIED)		DIMENSION STYLE		SCALE	DESIGN UNITS	THIRD ANGLE PROJECTION	
				IN/MM		4:1	METRIC		
				DRAWN BY DATE		TITLE			
				CHECKED BY DATE		SELECTIVELY LOADED SINGLE ROW VERT HDR ASSY MINI-FIT JR			
		APPROVED BY DATE		MATERIAL NO.		DOCUMENT NO.		SHEET NO.	
		ANGULAR ±1/2°		SEE SHEET 2		SDA-43242-*		1 OF 2	
		DRAFT WHERE APPLICABLE MUST REMAIN WITHIN DIMENSIONS		THIS DRAWING CONTAINS INFORMATION THAT IS PROPRIETARY TO MOLEX INCORPORATED AND SHOULD NOT BE USED WITHOUT WRITTEN PERMISSION					

ITEM NO.	CKT. SIZE	CHARACTERISTIC DESCRIPTION	MOUNTING OPTION	PLATING	LETTER INDICATES PLATING AT EACH CKT., SEE NOTE 5											
					1	2	3	4	5	6	7	8	9	10	11	12
43242-0001	03	03BIAI	PEG	A	A	A	A	-	-	-	-	-	-	-	-	-
43242-0002	04	04BIAI	PEG	A	A	A	A	A	-	-	-	-	-	-	-	-
43242-0003	05	05BIAI	PEG	A	A	A	A	A	A	-	-	-	-	-	-	-
43242-0004	04	04AIAI	PEG	A	A	A	A	A	-	-	-	-	-	-	-	-
43242-0005	03	03B3AI	PEGS REMOVED	A	A	A	A	-	-	-	-	-	-	-	-	-
43242-0006	04	04B3AI	PEGS REMOVED	A	A	A	A	A	-	-	-	-	-	-	-	-

**CHARACTERISTICS LEGEND:**



SEE SHEET 1 EC NO: UCP2013-0433 DRAWN BY: 2012/08/01 CHKD: BELL APPR: SMITH 2012/08/09	QUALITY SYMBOLS 	GENERAL TOLERANCES (UNLESS SPECIFIED)		DIMENSION STYLE		SCALE	DESIGN UNITS	THIRD ANGLE PROJECTION	
				IN/MM		1:1	METRIC		
		4 PLACES ± --- ± ---		DRAWN BY: NGUYEN DATE: 2012/01/24		TITLE: SELECTIVELY LOADED SINGLE ROW VERT HDR ASSY MINI-FIT JR			
		3 PLACES ± --- ± .015		CHECKED BY: GEP DATE: ---		MOLEX INCORPORATED			
2 PLACES ± .38 ± ---		APPROVED BY: F SMITH DATE: 2012/02/02		MATERIAL NO.		DOCUMENT NO.		SHEET NO.	
1 PLACE ± --- ± ---		ANGULAR ± 1/2°		SEE CHART		SDA-43242-*		2 OF 2	
DRAFT WHERE APPLICABLE MUST REMAIN WITHIN DIMENSIONS		THIS DRAWING CONTAINS INFORMATION THAT IS PROPRIETARY TO MOLEX INCORPORATED AND SHOULD NOT BE USED WITHOUT WRITTEN PERMISSION							