

Excellent Integrated System Limited

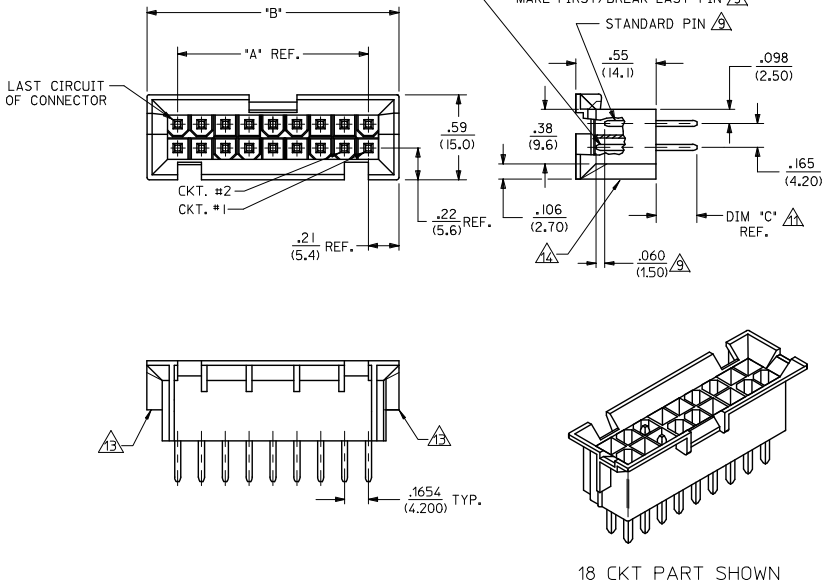
Stocking Distributor

Click to view price, real time Inventory, Delivery & Lifecycle Information:

[Molex Connector Corporation](#)
[0436930020](#)

For any questions, you can email us directly:

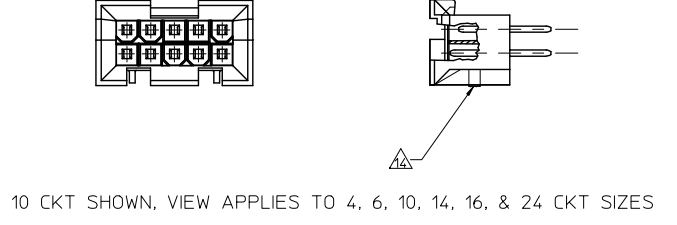
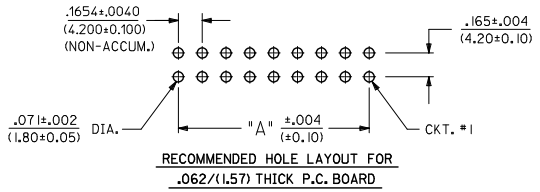
sales@integrated-circuit.com



- NOTES:**
- HOUSING MATERIAL: A = NYLON 6/6, U.L. 94V-2, COLOR: NATURAL.
B = NYLON 6/6, U.L. 94V-0, COLOR: NATURAL.
C = PBT POLYESTER 94V-0 COLOR: BLACK
 - TERMINAL MATERIAL: BRASS ALLOY
 - TERMINAL PLATING
A = .000100/(0.00254) MIN. MATTE TIN OVER
.000050/(0.00127) MIN. NICKEL.
C = .000030/(0.00076) MIN. SELECT GOLD AND
.000100/(0.00254) MIN. SELECT MATTE TIN
OVER .000050/(0.00127) MIN. NICKEL OVERALL.
D = .000060/(0.00152) MIN REFLOWED MATTE TIN OVER
.000050/(0.00127) MIN. NICKEL OVERALL.
 - PRODUCT SPECIFICATION: PS-5556-002
 - PACKAGING IN TRAYS PER PK-42404-002 EXCEPT 43693-0024 PACKAGED BULK
 - PART MATES WITH MINI-FIT JR. RECEPTACLES 5557, 42385, 42474 AND 44516.
 - PART ALLOWS FOR UP TO .001(0.254) MISALIGNMENT WITH MATING RECEPTACLE IN ANY DIRECTION. SEE MATING CONNECTOR DRAWINGS FOR SPECIFIC ALLOWANCE.
 - PARTS ARE NOT DESIGNED FOR CURRENT SHARING.
 - CONNECTORS ASSEMBLIES ARE NOT TO BE MATED OR UNMATED WHILE CIRCUITS ARE LIVE.
 - SEE CHART ON SHEET 2 FOR STANDARD, MAKE-FIRST/BREAK-LAST AND PLATING LOCATIONS.
 - ITEM NUMBERS PRECEDED BY AN "X" IN THE CHART ARE NOT AVAILABLE.
 - REFERENCE DIMENSION "C" NOT TO EXCEED .283(7.20) NOMINAL.
 - DISCOLORATION IN THE BANDOLIER CARRIER AREA OF THE PIN IS INHERENT TO THE PLATING PROCESS AND IS DUE TO THE MASKING EFFECT OF THE CARRIER. THIS DISCOLORATION IS IN A NON-FUNCTIONAL AREA OF THE PIN AND WILL NOT AFFECT THE PERFORMANCE OF THE HEADER ASSEMBLY.
 - PART CONFORMS TO CLASS "B" REQUIREMENTS OF COSMETIC SPECIFICATION PS-45499-002, EXCEPT CLASS "C" ON BOTH SIDE RIBS.
 - CUT OFF PEGS NOT TO PROTRUDE MORE THAN .030(0.76) ON ALL CIRCUIT SIZES EXCEPT 18 CIRCUIT PARTS WILL NOT HAVE CUT OFF PEGS.

18 CKT PART SHOWN

36	2.811 (71.40)	3.236 (82.20)
24	1.819 (46.20)	2.244 (57.00)
22	1.654 (42.00)	2.079 (52.80)
20	1.488 (37.80)	1.913 (48.60)
18	1.323 (33.60)	1.748 (44.40)
16	1.157 (29.40)	1.583 (40.20)
14	.992 (25.20)	1.417 (36.00)
12	.827 (21.00)	1.252 (31.80)
10	.661 (16.80)	1.087 (27.60)
8	.496 (12.60)	.921 (23.40)
6	.331 (8.40)	.756 (19.20)
4	.165 (4.20)	.590 (15.00)
2		.425 (10.80)
CKT. SIZE	DIM. "A"	DIM. "B"



UPDATE NOTE 14 EC NO: UCP2015-4258 DRWNG: JOMIT 2015/06/25 CHKCD: BELL 2015/06/25 APPRFSM: TH 2015/07/10	QUALITY SYMBOLS ∇=0 ∇=0 ∇=0	GENERAL TOLERANCES (UNLESS SPECIFIED) mm INCH 4 PLACES ± --- ± --- 3 PLACES ± --- ± .015 2 PLACES ± 0.38 ± --- 1 PLACE ± --- ± --- ANGULAR ±1/2°	DIMENSION STYLE IN/MM	SCALE 2:1	DESIGN UNITS METRIC	THIRD ANGLE PROJECTION		
		DRAWN BY GEP DATE 3/11/96	CHECKED BY RFJ DATE 3/11/96	APPROVED BY RFJ DATE 3/11/96	TITLE VERT. HEADER ASSY WITH MAKE-FIRST/BREAK-LAST MINI-FIT B.M.I. SERIES	MOLEX INCORPORATED	MATERIAL NO. SEE CHART	DOCUMENT NO. SDA-43693-****
		DRAFT WHERE APPLICABLE MUST REMAIN WITHIN DIMENSIONS	SIZE C	THIS DRAWING CONTAINS INFORMATION THAT IS PROPRIETARY TO MOLEX INCORPORATED AND SHOULD NOT BE USED WITHOUT WRITTEN PERMISSION	SHEET NO. 1 OF 2			
		D2	REV					



ITEM NO.	CHARACTERISTIC DESCRIPTION	CKT. SIZE	TERMINAL	VERSION	REQUIRED AT	EACH	CIRCUIT	LOCATION	*S* = STD. LENGTH	*M* = MAKE-FIRST/BREAK-LAST	*V* = VOIDED CIRCUIT	DIM °C	REF.
43693-0001	10AC	10	CS	CS	CM	CS	CS	CS	CS	CS	CS	28.3	(7.20)
43693-0002	24BA	24	AM	AM	AM	AM	AM	AM	AM	AM	AM	15.2	(3.91)
43693-0005	16BA	16	AS	AS	AS	AS	AS	AS	AS	AS	AS	15.0	(3.81)
43693-0020	18BA	18	AS	AS	AS	AS	AS	AS	AS	AS	AS	15.2	(3.91)
43693-0022	10BA	10	AS	AM	AM	AM	AM	AM	AM	AM	AM	15.2	(3.91)
43693-0024	10BC	10	CS	CS	CM	CS	CM	CM	CM	CS	CS	15.2	(3.91)
43693-0027	18BA	18	AS	AM	AM	AM	AM	AM	AM	AM	AM	15.2	(3.91)
43693-0030	18BA	18	AS	AS	AS	AS	AS	AS	AS	AS	AS	15.2	(3.91)
43693-0031	18BA	18	AM	AM	AM	AM	AM	AM	AM	AM	AM	15.2	(3.91)
43693-0037	18BD	18	DS	DM	DM	DM	DM	DM	DM	DM	DM	15.2	(3.91)

X = NOT AVAILABLE SEE NOTE 10

CHARACTERISTICS LEGEND:

CIRCUIT SIZE (02-24 & 36)

HOUSING MAT'L. (SEE NOTE 1)
 A = NYLON 6/6, U.L. 94V-2, COLOR: NATURAL
 B = NYLON 6/6, U.L. 94V-0, COLOR: NATURAL
 C = PBT POLYESTER 94V-0, COLOR: BLACK

TERMINAL PLATING (SEE NOTE 2)
 A = MATTE TIN
 C = SELECT GOLD
 D = REFLOW MATTE TIN

SEE SHEET 1 EC NO: UCP2015-4258 2015/06/25 DRAWN: JIMMY 2015/06/25 CHKD: BELL 2015/07/10 APPR: SMTH	QUALITY SYMBOLS 	GENERAL TOLERANCES (UNLESS SPECIFIED) <table border="1"> <tr> <th></th> <th>mm</th> <th>INCH</th> </tr> <tr> <td>4 PLACES</td> <td>±---</td> <td>±---</td> </tr> <tr> <td>3 PLACES</td> <td>±---</td> <td>±.015</td> </tr> <tr> <td>2 PLACES</td> <td>±0.38</td> <td>±---</td> </tr> <tr> <td>1 PLACE</td> <td>±---</td> <td>±---</td> </tr> </table>		mm	INCH	4 PLACES	±---	±---	3 PLACES	±---	±.015	2 PLACES	±0.38	±---	1 PLACE	±---	±---	DIMENSION STYLE IN/MM	SCALE METRIC	DESIGN UNITS METRIC	THIRD ANGLE PROJECTION
		mm	INCH																		
	4 PLACES	±---	±---																		
	3 PLACES	±---	±.015																		
2 PLACES	±0.38	±---																			
1 PLACE	±---	±---																			
DESCRIPTION SEE CHART	DRAFT WHERE APPLICABLE MUST REMAIN WITHIN DIMENSIONS	DRAWN BY GEP DATE 3/11/96 CHECKED BY RFJ DATE 3/11/96 APPROVED BY RFJ DATE 3/11/96	TITLE VERT. HEADER ASSY WITH MAKE-FIRST/BREAK-LAST MINI-FIT B.M.I. SERIES		MATERIAL NO. SEE CHART	DOCUMENT NO. SDA-43693-****															
REV D2	SIZE C	THIS DRAWING CONTAINS INFORMATION THAT IS PROPRIETARY TO MOLEX INCORPORATED AND SHOULD NOT BE USED WITHOUT WRITTEN PERMISSION																			
		SHEET NO. 2 OF 2																			