

Excellent Integrated System Limited

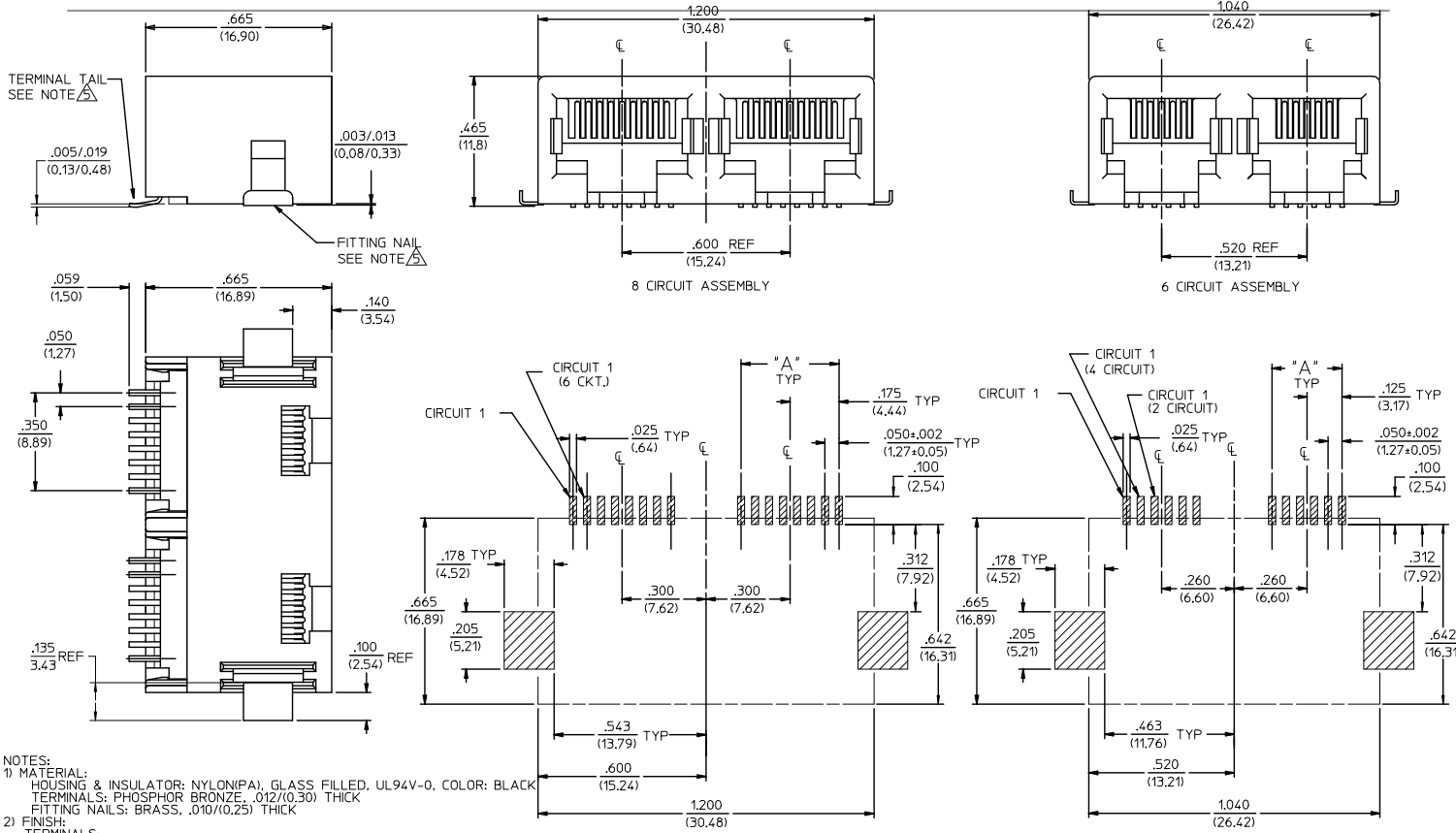
Stocking Distributor

Click to view price, real time Inventory, Delivery & Lifecycle Information:

[Molex Connector Corporation](#)
[0438410010](#)

For any questions, you can email us directly:

sales@integrated-circuit.com



- NOTES:
- MATERIAL: HOUSING & INSULATOR: NYLON(PA), GLASS FILLED, UL94V-0, COLOR: BLACK
TERMINALS: PHOSPHOR BRONZE, .012/(0.30) THICK
FITTING NAILS: BRASS, .010/(0.25) THICK
 - FINISH: TERMINALS:
A - SELECT GOLD IN CONTACT AREA: .000050/(0.00127) MIN, SELECT MATTE TIN IN PC TAIL AREA: .000100/(0.00254) MIN, WITH OVERALL NICKEL UNDERPLATE: .000050/(0.00127) MIN.
B - SELECT GOLD IN CONTACT AREA: .000030/(0.00076) MIN, SELECT MATTE TIN IN PC TAIL AREA: .000100/(0.00254) MIN, WITH OVERALL NICKEL UNDERPLATE: .000050/(0.00127) MIN.
C - SELECT GOLD IN CONTACT AREA: .000015/(0.00038) MIN, SELECT MATTE TIN IN PC TAIL AREA: .000100/(0.00254) MIN, WITH OVERALL NICKEL UNDERPLATE: .000050/(0.00127) MIN.
 - FITTING NAIL: 100 MICROINCHES MATTE TIN OVER 50 MICROINCHES NICKEL UNDERPLATE
 - PRODUCT SPECIFICATION AND PROCESSING PARAMETERS: PS-43743-0001
 - PACKAGING SPECIFICATION: CONNECTOR ASSEMBLIES TO BE PACKAGED USING TAPE & REEL SYSTEM.
 - COPLANARITY SPECIFICATION: WHEN AN ASSEMBLY IS PLACED UPON A LEVEL SURFACE, THE MAXIMUM GAP BETWEEN THE LEVEL SURFACE AND ALL TERMINAL TAILS AND BOTH FITTING NAILS IS .006/(0.15).
 - FOR ASSEMBLIES HAVING VOIDED CIRCUITS, THE TAIL PORTION IS CUT AND REMOVED, THE MATING PORTION OF THE TERMINAL REMAINS INTACT. VOIDED CIRCUITS MUST BE THE SAME FOR BOTH PARTS.
 - CONFORMS TO FCC REGULATION PART 68.5 FOR MODULAR JACKS.

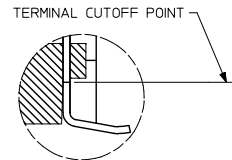
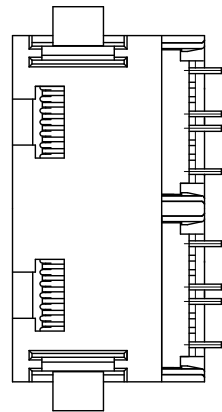
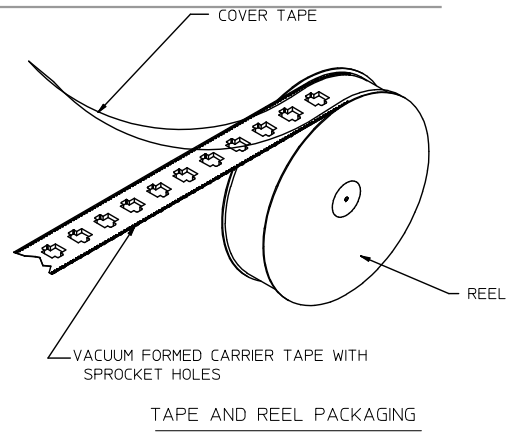
PC BOARD LAYOUT FOR 8 POSITION HOUSING (COMPONENT SIDE OF BOARD)

PC BOARD LAYOUT FOR 6 POSITION HOUSING (COMPONENT SIDE OF BOARD)

CORRECT NOTE # EC NO: UCP2015-4879 DRAWING NO: 2013/05/31 CHKD: BELL APPR: SMITH 2013/06/07	QUALITY SYMBOLS ∇=0 ∇=0 ∇=0	GENERAL TOLERANCES (UNLESS SPECIFIED)		DIMENSION STYLE IN/MM		SCALE 2:1	DESIGN UNITS INCH	THIRD ANGLE PROJECTION			
		4 PLACES ± .010 ± .010	3 PLACES ± .010 ± .010	2 PLACES ± 0.25 ± .015	1 PLACE ± .38 ± .015	0 PLACE ± .010 ± .010	DRAWN BY PEARSON DATE 01/07/197	CHECKED BY MUELLER DATE 01/07/197	TITLE 4, 6 & 8 CIRCUIT DUAL PORT SMT MODJACK		
		ANGULAR ± 1/2°		DRAFT WHERE APPLICABLE MUST REMAIN WITHIN DIMENSIONS		SEE CHART		MATERIAL NO. DOCUMENT NO. SD-43841-001			
		SHEET NO. 1 OF 2		THIS DRAWING CONTAINS INFORMATION THAT IS PROPRIETARY TO MOLEX INCORPORATED AND SHOULD NOT BE USED WITHOUT WRITTEN PERMISSION							

ASSEMBLY ITEM NO.	CONNECTOR SIZE	CIRCUIT SIZE	TERMINAL PLATING	TAPE & REEL PACKAGING NO.	VOIDED CIRCUITS
43841-0001	8	4	A	PK-70873-7004	NA
43841-0002	8	6	A	PK-70873-7004	
43841-0003	8	8	A	PK-70873-7004	
43841-0004	6	4	A	PK-70873-7003	
43841-0005	6	6	A	PK-70873-7003	
43841-0006	8	4	B	PK-70873-7004	
43841-0007	8	6	B	PK-70873-7004	
43841-0008	8	8	B	PK-70873-7004	
43841-0009	6	4	B	PK-70873-7003	
43841-0010	6	6	B	PK-70873-7003	
43841-0011	8	4	C	PK-70873-7004	
43841-0012	8	6	C	PK-70873-7004	
43841-0013	8	8	C	PK-70873-7004	
43841-0014	6	4	C	PK-70873-7003	
43841-0015	6	6	C	PK-70873-7003	
43841-0016	6	2	A	PK-70873-7003	
43841-0017	6	2	B	PK-70873-7003	
43841-0018	6	2	C	PK-70873-7003	NA

HOUSING SIZE	CIRCUIT SIZE	DIM. A
6	6	.250 (6.35)
6	4	.150 (3.81)
6	2	.050 (1.27)
8	8	.350 (8.89)
8	6	.250 (6.35)
8	4	.150 (3.81)



TYPICAL VIEW SHOWING VOIDED CIRCUIT (CIRCUITS 2,3,6,7 SHOWN VOIDED)

VIEW SHOWING TYPICAL TERMINAL CUTOFF OF TAIL (SEE NOTE 6) FOR VOIDED CIRCUITS.

SEE SHEET ONE IEC NO: UCP2013-4679 DRAWING/EN 2013/05/31 CHKD: BELL 2013/05/31 APPR: SMITH 2013/06/07 G4 REV	QUALITY SYMBOLS ∇=0 ∇=0 ∇=0	GENERAL TOLERANCES (UNLESS SPECIFIED)		DIMENSION STYLE IN/MM		SCALE 2:1	DESIGN UNITS INCH	THIRD ANGLE PROJECTION	
		4 PLACES ± --- ± ---	mm	INCH	DRAWN BY	DATE	TITLE 4, 6 & 8 CIRCUIT DUAL PORT SMT MODJACK molex DOCUMENT NO. SD-43841-001 SHEET NO. 2 OF 2		
		3 PLACES ± --- ± .010			PEARSON	01/07/97			
		2 PLACES ± 0.25 ± .015			CHECKED BY	DATE			
1 PLACE ± .38 ± ---			MUELLER	01/07/97					
			0 PLACE ± --- ± ---			APPROVED BY	DATE		
						FSMITH	2012/10/12		
			ANGULAR ±1/2°			MATERIAL NO.			
DRAFT WHERE APPLICABLE MUST REMAIN WITHIN DIMENSIONS		SEE CHART		THIS DRAWING CONTAINS INFORMATION THAT IS PROPRIETARY TO MOLEX INCORPORATED AND SHOULD NOT BE USED WITHOUT WRITTEN PERMISSION					