

## Excellent Integrated System Limited

Stocking Distributor

Click to view price, real time Inventory, Delivery & Lifecycle Information:

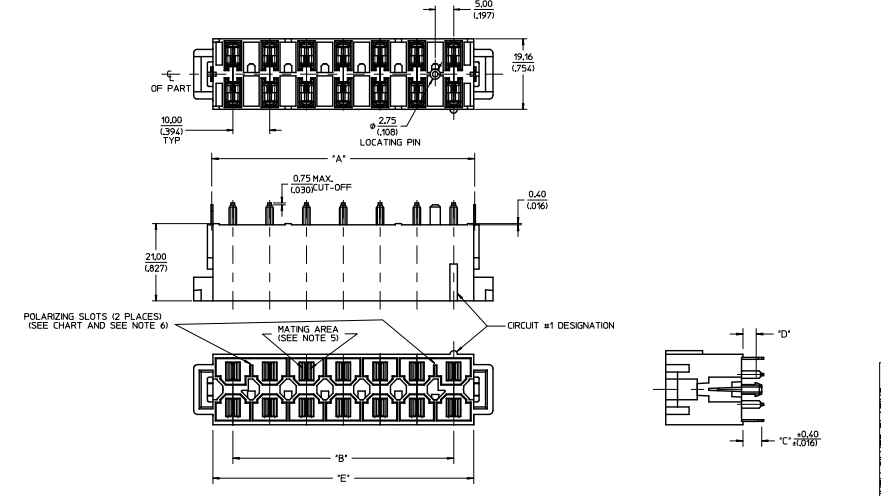
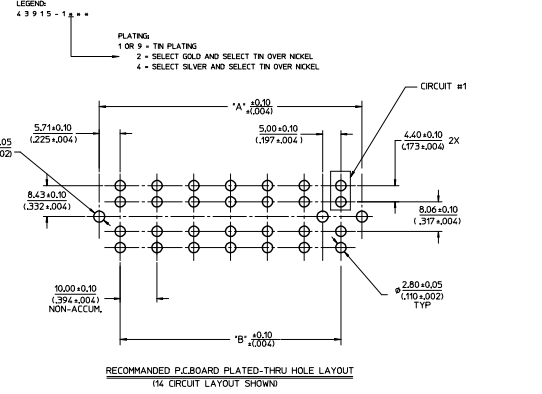
[Molex Connector Corporation](#)  
[0439151108](#)

For any questions, you can email us directly:

[sales@integrated-circuit.com](mailto:sales@integrated-circuit.com)

MATERIAL NUMBER	CIRCUITS	DM'A'	DM'B'	DM'C'	DM'D'	DM'E'	PCB THICKNESS	QUANTITY OF POLARIZING SLOTS	TERMINAL PLATING	STATUS
4395-1201	6	3141/2371	2000/1781	3501/1371	1801/079	3000/1217		1		
4395-1202	8	4141/1630	3000/1181	3501/1371	1801/079	4090/1640		2		
4395-1203	10	5141/2024	4000/1575	3501/1371	1801/079	5090/2004	157/1062	2		
4395-1204	12	6141/2418	5000/1969	3501/1371	1801/079	6090/2398		2		
4395-1205	14	7141/2811	6000/2362	3501/1371	1801/079	7090/2791		2		
4395-1206	6	3141/2371	2000/1781	5101/209	2401/102	3000/1217		1		
4395-1207	8	4141/1630	3000/1181	5101/209	2401/102	4090/1640		2		
4395-1208	10	5141/2024	4000/1575	5101/209	2401/102	5090/2004	236/1093	2		
4395-1209	12	6141/2418	5000/1969	5101/209	2401/102	6090/2398		2		
4395-1210	14	7141/2811	6000/2362	5101/209	2401/102	7090/2791		2	SELECT GOLD (SEE LEGEND)	ACTIVE
4395-1211	6	3141/2371	2000/1781	3501/1371	3401/134	3000/1217		1		
4395-1212	8	4141/1630	3000/1181	3501/1371	3401/134	4090/1640		2		
4395-1213	10	5141/2024	4000/1575	3501/1371	3401/134	5090/2004	318/1125	2		
4395-1214	12	6141/2418	5000/1969	3501/1371	3401/134	6090/2398		2		
4395-1215	14	7141/2811	6000/2362	3501/1371	3401/134	7090/2791		2		
4395-1216	6	3141/2371	2000/1781	8301/327	658/259	3000/1217		1		
4395-1217	8	4141/1630	3000/1181	8301/327	658/259	4090/1640		2		
4395-1218	10	5141/2024	4000/1575	8301/327	658/259	5090/2004	635/1250	2		
4395-1219	12	6141/2418	5000/1969	8301/327	658/259	6090/2398		2		
4395-1220	14	7141/2811	6000/2362	8301/327	658/259	7090/2791		2		
4395-1221	10	5141/2024	4000/1575	3501/1371	2401/102	5090/2004	236/1093	2		
4395-1401	6	3141/2371	2000/1781	3501/1371	1801/079	3000/1217		2		
4395-1402	8	4141/1630	3000/1181	3501/1371	1801/079	4090/1640	157/1062	2		
4395-1403	10	5141/2024	4000/1575	3501/1371	1801/079	5090/2004		2		
4395-1404	12	6141/2418	5000/1969	3501/1371	1801/079	6090/2398		2		
4395-1405	14	7141/2811	6000/2362	3501/1371	1801/079	7090/2791		2		
4395-1406	6	3141/2371	2000/1781	5101/209	2401/102	3000/1217		2		
4395-1407	8	4141/1630	3000/1181	5101/209	2401/102	4090/1640		2		
4395-1408	10	5141/2024	4000/1575	5101/209	2401/102	5090/2004	236/1093	2		
4395-1409	12	6141/2418	5000/1969	5101/209	2401/102	6090/2398		2		
4395-1410	14	7141/2811	6000/2362	5101/209	2401/102	7090/2791		2	SELECT SILVER (SEE LEGEND)	ACTIVE
4395-1411	6	3141/2371	2000/1781	5101/209	3401/134	3000/1217		2		
4395-1412	8	4141/1630	3000/1181	5101/209	3401/134	4090/1640		2		
4395-1413	10	5141/2024	4000/1575	5101/209	3401/134	5090/2004	318/1125	2		
4395-1414	12	6141/2418	5000/1969	5101/209	3401/134	6090/2398		2		
4395-1415	14	7141/2811	6000/2362	5101/209	3401/134	7090/2791		2		
4395-1416	6	3141/2371	2000/1781	8301/327	658/259	3000/1217		2		
4395-1417	8	4141/1630	3000/1181	8301/327	658/259	4090/1640		2		
4395-1418	10	5141/2024	4000/1575	8301/327	658/259	5090/2004	635/1250	2		
4395-1419	12	6141/2418	5000/1969	8301/327	658/259	6090/2398		2		
4395-1420	14	7141/2811	6000/2362	8301/327	658/259	7090/2791		2		
4395-1421	10	5141/2024	4000/1575	3501/1371	2401/102	5090/2004	236/1093	2		

- NOTES:**
- MATERIALS:**  
HOUSING: 30% GLASS FILLED NYLON 4/6, UL94V-0, COLOR: BLACK.  
  
TERMINAL: ALLOY '51'  
PLATING: \*TIN OVER NICKEL  
OR SELECT GOLD AND SELECT TIN OVER NICKEL  
OR SELECT SILVER AND SELECT TIN OVER NICKEL  
(SEE CHART)  
\* THE PRIMARY SHIPPING CARTON WILL BE LABELED  
COMPLIANT TO RHS DIRECTIVE 2002/95/EC  
AND ELV ANNEX II OF DIRECTIVE 2000/53/EC.  
CARTONS WITHOUT THIS LABEL MAY CONTAIN  
PRODUCT WITH TIN-LEAD.
  - PRODUCT SPEC:** PS-42815-001
  - PARTS ARE NOT TO BE MATED OR UNMATED WHILE CIRCUITS ARE LIVE.
  - PART MATES WITH MOLEX RECEPTACLE 4394.
  - WHEN USING OVERALL TIN PLATED TERMINALS:  
FOR APPLICATIONS INVOLVING VIBRATION AND/OR THERMAL CYCLING, MOLEX STRONGLY  
RECOMMENDS THE USE OF NYE LUBRICANT INVOGEL 76001 ON THE MATING  
SURFACES OF THE TERMINAL.
  - POLARIZING SLOTS TO BE LOCATED BETWEEN CIRCUITS ON EITHER END  
OF HOUSING OF THE CIRCUIT 1 ROW, AS SHOWN.  
EXCEPTION: THE 6 CIRCUIT HOUSING WILL HAVE A SINGLE SLOT ON THE CIRCUIT 1 END ONLY.
  - PARTS CONFORMS TO CLASS 'B' REQUIREMENTS OF COSMETIC SPEC-PS-45499-002.
  - REFER AS-42815-001 FOR TIN PLATED TERMINALS RECOMMENDED LUBRICATION PROCEDURE.



<b>NEW SILVER PLATING</b> REPAIR (MATERIAL) 2752 (DOWN) BRO2 (CHECK) APPROVED 2015/02/09 (DATE)	<b>QUALITY SYMBOLS</b> $\nabla=0$ $\nabla=0$ $\nabla=0$	<b>GENERAL TOLERANCES (UNLESS SPECIFIED)</b> mm INCH 4 PLACES $\pm 0.25$ $\pm 0.010$ 3 PLACES $\pm 0.20$ $\pm 0.008$ 2 PLACES $\pm 0.2$ $\pm 0.008$ 1 PLACE $\pm 0.2$ $\pm 0.008$ 0 PLACE $\pm 0.2$ $\pm 0.008$	<b>DIMENSION STYLE</b> MM/IN DRAWN BY: COMERC1 CHECKED BY: BRO2 APPROVED BY: KPRASAD DATE: 8/21/19 DATE: 2014/02/13 DATE: 2015/02/09	<b>SCALE</b> 2:1 <b>DESIGN UNITS</b> METRIC <b>THIRD ANGLE PROJECTION</b>	<b>TITLE</b> VERTICAL HEADER DUAL ROW, 6-14 CIRCUIT MINI-FIT SR.	<b>MATERIAL NO.</b> SEE CHART	<b>DOCUMENT NO.</b> SD-43915-002	<b>SHEET NO.</b> 1 OF 2
	<b>DRAFT WHERE APPLICABLE MUST REMAIN WITHIN DIMENSIONS</b>							
	<b>SIZE D THIS DRAWING CONTAINS INFORMATION THAT IS PROPRIETARY TO MOLEX INCORPORATED AND SHOULD NOT BE USED WITHOUT WRITTEN PERMISSION</b>							
	<b>REVISIONS</b>							

