

## Excellent Integrated System Limited

Stocking Distributor

Click to view price, real time Inventory, Delivery & Lifecycle Information:

[Molex Connector Corporation](#)  
[0439151113](#)

For any questions, you can email us directly:

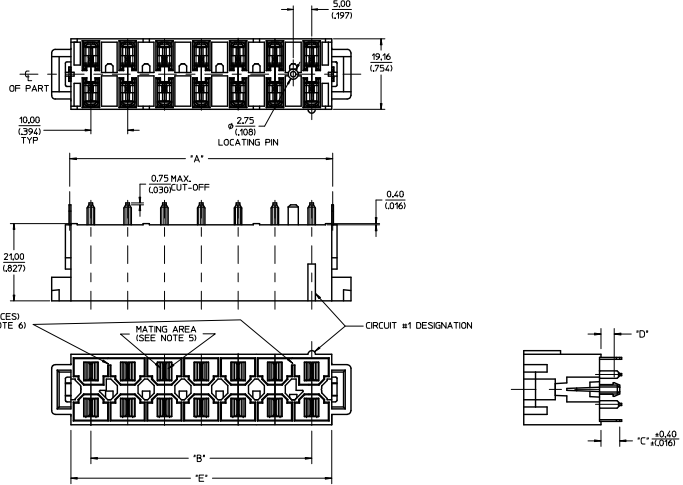
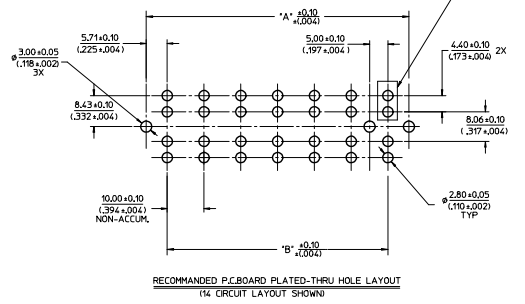
[sales@integrated-circuit.com](mailto:sales@integrated-circuit.com)

MATERIAL NUMBER	CIRCUITS	DM'A'	DM'B'	DM'C'	DM'D'	DM'E'	PCB THICKNESS	QUANTITY OF POLARIZING SLOTS	TERMINAL PLATING	STATUS
4395-1201	6	3141/2371	2000/1781	3501/1371	1801/079	3000/1217		1		
4395-1202	8	4141/1630	3000/1181	3501/1371	1801/079	4000/1650		2		
4395-1203	10	5141/2024	4000/1575	3501/1371	1801/079	5000/2004	157/1062	2		
4395-1204	12	6141/2418	5000/1969	3501/1371	1801/079	6000/2398		2		
4395-1205	14	7141/2811	6000/2362	3501/1371	1801/079	7000/2791		2		
4395-1206	8	3141/2371	2000/1781	5101/209	2401/102	3000/1217		1		
4395-1207	8	4141/1630	3000/1181	5101/209	2401/102	4000/1650		2		
4395-1208	10	5141/2024	4000/1575	5101/209	2401/102	5000/2004	236/1093	2		
4395-1209	12	6141/2418	5000/1969	5101/209	2401/102	6000/2398		2		
4395-1210	14	7141/2811	6000/2362	5101/209	2401/102	7000/2791		2	SELECT GOLD (SEE LEGEND)	ACTIVE
4395-1211	6	3141/2371	2000/1781	3501/1371	3401/134	3000/1217		1		
4395-1212	8	4141/1630	3000/1181	3501/1371	3401/134	4000/1650		2		
4395-1213	10	5141/2024	4000/1575	3501/1371	3401/134	5000/2004	318/1125	2		
4395-1214	12	6141/2418	5000/1969	3501/1371	3401/134	6000/2398		2		
4395-1215	14	7141/2811	6000/2362	3501/1371	3401/134	7000/2791		2		
4395-1216	6	3141/2371	2000/1781	8301/327	658/259	3000/1217		1		
4395-1217	8	4141/1630	3000/1181	8301/327	658/259	4000/1650		2		
4395-1218	10	5141/2024	4000/1575	8301/327	658/259	5000/2004	635/1250	2		
4395-1219	12	6141/2418	5000/1969	8301/327	658/259	6000/2398		2		
4395-1220	14	7141/2811	6000/2362	8301/327	658/259	7000/2791		2		
4395-1221	10	5141/2024	4000/1575	3501/1371	2401/102	5000/2004	236/1093	2		
4395-1401	6	3141/2371	2000/1781	3501/1371	1801/079	3000/1217		1		
4395-1402	8	4141/1630	3000/1181	3501/1371	1801/079	4000/1650	157/1062	2		
4395-1403	10	5141/2024	4000/1575	3501/1371	1801/079	5000/2004		2		
4395-1404	12	6141/2418	5000/1969	3501/1371	1801/079	6000/2398		2		
4395-1405	14	7141/2811	6000/2362	3501/1371	1801/079	7000/2791		2		
4395-1406	8	3141/2371	2000/1781	5101/209	2401/102	3000/1217		1		
4395-1407	8	4141/1630	3000/1181	5101/209	2401/102	4000/1650		2		
4395-1408	10	5141/2024	4000/1575	5101/209	2401/102	5000/2004	236/1093	2		
4395-1409	12	6141/2418	5000/1969	5101/209	2401/102	6000/2398		2		
4395-1410	14	7141/2811	6000/2362	5101/209	2401/102	7000/2791		2	SELECT SILVER (SEE LEGEND)	ACTIVE
4395-1411	6	3141/2371	2000/1781	3501/1371	3401/134	3000/1217		1		
4395-1412	8	4141/1630	3000/1181	3501/1371	3401/134	4000/1650		2		
4395-1413	10	5141/2024	4000/1575	3501/1371	3401/134	5000/2004	318/1125	2		
4395-1414	12	6141/2418	5000/1969	3501/1371	3401/134	6000/2398		2		
4395-1415	14	7141/2811	6000/2362	3501/1371	3401/134	7000/2791		2		
4395-1416	6	3141/2371	2000/1781	8301/327	658/259	3000/1217		1		
4395-1417	8	4141/1630	3000/1181	8301/327	658/259	4000/1650		2		
4395-1418	10	5141/2024	4000/1575	8301/327	658/259	5000/2004	635/1250	2		
4395-1419	12	6141/2418	5000/1969	8301/327	658/259	6000/2398		2		
4395-1420	14	7141/2811	6000/2362	8301/327	658/259	7000/2791		2		
4395-1421	10	5141/2024	4000/1575	3501/1371	2401/102	5000/2004	236/1093	2		

- NOTES:**
- MATERIALS:**  
HOUSING: 30% GLASS FILLED NYLON 4/6, UL94V-0, COLOR: BLACK.  
  
TERMINAL: ALLOY '51'  
PLATING: \*TIN OVER NICKEL  
OR SELECT GOLD AND SELECT TIN OVER NICKEL  
OR SELECT SILVER AND SELECT TIN OVER NICKEL  
(SEE CHART)  
\* THE PRIMARY SHIPPING CARTON WILL BE LABELED  
COMPLIANT TO RHS DIRECTIVE 2002/95/EC  
AND ELV ANNEX II OF DIRECTIVE 2000/53/EC.  
CARTONS WITHOUT THIS LABEL MAY CONTAIN  
PRODUCT WITH TIN-LEAD.
  - PRODUCT SPEC:** PS-42815-001
  - PARTS ARE NOT TO BE MATED OR UNMATED WHILE CIRCUITS ARE LIVE.
  - PART MATES WITH MOLEX RECEPTACLE 4394.
  - WHEN USING OVERALL TIN PLATED TERMINALS:  
FOR APPLICATIONS INVOLVING VIBRATION AND/OR THERMAL CYCLING, MOLEX STRONGLY  
RECOMMENDS THE USE OF NYE LUBRICANT (NYOGEL 7600) ON THE MATING  
SURFACES OF THE TERMINAL.
  - POLARIZING SLOTS TO BE LOCATED BETWEEN CIRCUITS ON EITHER END  
OF HOUSING OF THE CIRCUIT 1 ROW, AS SHOWN.  
EXCEPTION: THE 6 CIRCUIT HOUSING WILL HAVE A SINGLE SLOT ON THE CIRCUIT 1 END ONLY.
  - PARTS CONFORMS TO CLASS 'B' REQUIREMENTS OF COSMETIC SPEC-PS-45499-002.
  - REFER AS-42815-001 FOR TIN PLATED TERMINALS RECOMMENDED LUBRICATION PROCEDURE.

**LEGEND:**  
4 3 9 1 5 - 1 - \* - \* - \*

**PLATING:**  
1 OR \* - TIN PLATING  
2 = SELECT GOLD AND SELECT TIN OVER NICKEL  
4 = SELECT SILVER AND SELECT TIN OVER NICKEL



QUALITY SYMBOLS	GENERAL TOLERANCES (UNLESS SPECIFIED)	DIMENSION STYLE		SCALE	DESIGN UNITS	THIRD ANGLE PROJECTION
		MM	INCH			
▽=0	4 PLACES ±0.008	COMERC1	8/21/197	2:1	METRIC	VERTICAL HEADER DUAL ROW, 6-14 CIRCUIT MINI-FIT SR.
▽=0	3 PLACES ±0.008	CHECKED BY	DATE			
▽=0	2 PLACES ±0.2	APPROVED BY	DATE			
▽=0	1 PLACE ±0.2	KPRASAD	2015/02/09			
DRAFT WHERE APPLICABLE MUST REMAIN WITHIN DIMENSIONS		ANGULAR ±1/2°		MATERIAL NO.		DOCUMENT NO.
		SEE CHART		SD-43915-002		SHEET NO. 1 OF 2



20 19 18 17 16 15 14 13 12 11 10 9 8 7 6 5 4 3 2 1

MATERIAL NUMBER	CIRCUITS	DMC'A'	DMC'B'	DMC'C'	DMC'D'	DMC'E'	PCB THICKNESS	QUANTITY OF POLARIZMS SLOTS	TERMINAL PLATING	STATUS
4395-1101	8	3141(1237)	30.00(1181)	3.50(137)	1.80(1078)	20.90(1271)	1.57(062)	1		
4395-1102	8	4141(1630)	30.00(1181)	3.50(137)	1.80(1078)	40.90(1650)	1.57(062)	2		
4395-1103	10	5141(1724)	40.00(1575)	3.50(137)	1.80(1078)	50.90(2044)	1.57(062)	2		
4395-1104	12	6141(1949)	50.00(1949)	3.50(137)	1.80(1078)	60.90(2398)	1.57(062)	2		
4395-1105	14	7141(2181)	60.00(2362)	3.50(137)	1.80(1078)	70.90(2799)	1.57(062)	2		
4395-1106	6	3141(1237)	30.00(1181)	5.00(201)	2.60(1102)	30.90(1271)	2.36(093)	1		
4395-1107	8	4141(1630)	30.00(1181)	5.00(201)	2.60(1102)	40.90(1650)	2.36(093)	2		
4395-1108	10	5141(1724)	40.00(1575)	5.00(201)	2.60(1102)	50.90(2044)	2.36(093)	2		
4395-1109	12	6141(1949)	50.00(1949)	5.00(201)	2.60(1102)	60.90(2398)	2.36(093)	2		
4395-1110	14	7141(2181)	60.00(2362)	5.00(201)	2.60(1102)	70.90(2799)	2.36(093)	2		
4395-1111	6	3141(1237)	30.00(1181)	5.00(201)	3.40(134)	30.90(1271)	3.18(125)	1		
4395-1112	8	4141(1630)	30.00(1181)	5.00(201)	3.40(134)	40.90(1650)	3.18(125)	2		
4395-1113	10	5141(1724)	40.00(1575)	5.00(201)	3.40(134)	50.90(2044)	3.18(125)	2		
4395-1114	12	6141(1949)	50.00(1949)	5.00(201)	3.40(134)	60.90(2398)	3.18(125)	2		
4395-1115	14	7141(2181)	60.00(2362)	5.00(201)	3.40(134)	70.90(2799)	3.18(125)	2		
4395-1116	6	3141(1237)	30.00(1181)	8.30(327)	6.58(259)	30.90(1271)	6.35(250)	1		
4395-1117	8	4141(1630)	30.00(1181)	8.30(327)	6.58(259)	40.90(1650)	6.35(250)	2		
4395-1118	10	5141(1724)	40.00(1575)	8.30(327)	6.58(259)	50.90(2044)	6.35(250)	2		
4395-1119	12	6141(1949)	50.00(1949)	8.30(327)	6.58(259)	60.90(2398)	6.35(250)	2		
4395-1120	14	7141(2181)	60.00(2362)	8.30(327)	6.58(259)	70.90(2799)	6.35(250)	2		
4395-1121	10	5141(1724)	40.00(1575)	3.50(137)	2.60(1102)	50.90(2044)	2.36(093)	2		
4395-1122	14	7141(2181)	60.00(2362)	3.50(137)	1.80(1078)	70.90(2799)	1.57(062)	2		

OVERALL TN PLANNED FOR OBSOLETE

SEE SHEET 1  
 EC No. 043915-2752  
 DWN:BR02 2013/10/25  
 CHK: [ ]  
 APP:KPRASAD 2015/02/09  
 REV: 1

QUALITY SYMBOLS	GENERAL TOLERANCES (UNLESS SPECIFIED)		DIMENSION STYLE		SCALE	DESIGN UNITS	THIRD ANGLE PROJECTION
	mm	INCH	MM/IN	DATE			
▽=0	4 PLACES ± .008	± .0008	DRAWN BY COMERC I	8/21/97	1:2	METRIC	VERTICAL HEADER DUAL ROW, 6-14 CIRCUIT MINI-FIT SR.
▽=0	3 PLACES ± 0.2	± .008	CHECKED BY BR02	2014/02/13			<b>molex</b>
▽=0	1 PLACE ± .008	± .0008	APPROVED BY KPRASAD	2015/02/09			

ANGULAR ±1/2°  
 DRAFT WHERE APPLICABLE MUST REMAIN WITHIN DIMENSIONS  
 SEE CHART  
 THIS DRAWING CONTAINS INFORMATION THAT IS PROPRIETARY TO MOLEX INCORPORATED AND SHOULD NOT BE USED WITHOUT WRITTEN PERMISSION

MATERIAL NO. SD-43915-002  
 DOCUMENT NO. SD-43915-002  
 SHEET NO. 2 OF 2

IS: Home\_D.P.-Att.1 Rev. 5 2015/02/09 19 18 17 16 15 14 13 12 11 10 9 8 7 6 5 4 3 2 1