

Excellent Integrated System Limited

Stocking Distributor

Click to view price, real time Inventory, Delivery & Lifecycle Information:

[Molex Connector Corporation](#)
[0439151117](#)

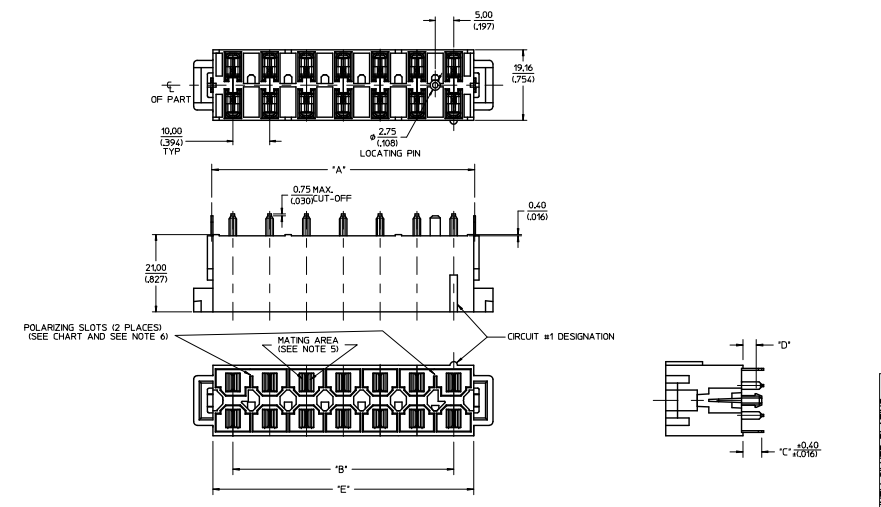
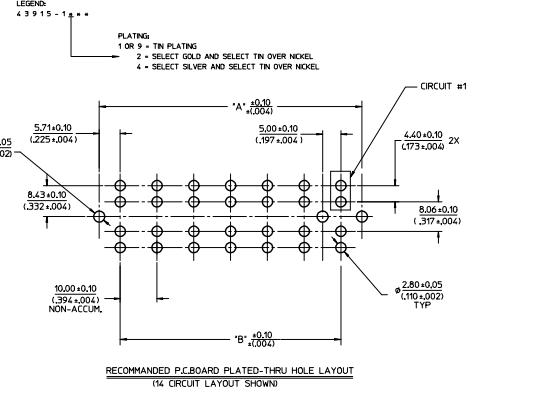
For any questions, you can email us directly:

sales@integrated-circuit.com

MATERIAL NUMBER	CIRCUITS	DM'A'	DM'B'	DM'C'	DM'D'	DM'E'	PCB THICKNESS	QUANTITY OF POLARIZING SLOTS	TERMINAL PLATING	STATUS
4395-0201	6	3141/1237	2000/1781	3501/1371	1801/079	3000/1217		1		
4395-0202	8	4141/1630	3000/1181	3501/1371	1801/079	4000/1600		2		
4395-0203	10	5141/2024	4000/1575	3501/1371	1801/079	5000/2004	1.57(1.062)	2		
4395-0204	12	6141/2418	5000/1969	3501/1371	1801/079	6000/2398		2		
4395-0205	14	7141/2811	6000/2362	3501/1371	1801/079	7000/2791		2		
4395-0206	6	3141/1237	2000/1781	3501/1371	2401/1021	3000/1217		1		
4395-0207	8	4141/1630	3000/1181	3501/1371	2401/1021	4000/1600		2		
4395-0208	10	5141/2024	4000/1575	3501/1371	2401/1021	5000/2004	2.36(1.093)	2		
4395-0209	12	6141/2418	5000/1969	3501/1371	2401/1021	6000/2398		2		
4395-0210	14	7141/2811	6000/2362	3501/1371	2401/1021	7000/2791		2	SELECT GOLD (SEE LEGEND)	ACTIVE
4395-0211	6	3141/1237	2000/1781	3501/1371	3401/1341	3000/1217		1		
4395-0212	8	4141/1630	3000/1181	3501/1371	3401/1341	4000/1600		2		
4395-0213	10	5141/2024	4000/1575	3501/1371	3401/1341	5000/2004	3.18(1.252)	2		
4395-0214	12	6141/2418	5000/1969	3501/1371	3401/1341	6000/2398		2		
4395-0215	14	7141/2811	6000/2362	3501/1371	3401/1341	7000/2791		2		
4395-0216	6	3141/1237	2000/1781	8301/3271	6581/2591	3000/1217		1		
4395-0217	8	4141/1630	3000/1181	8301/3271	6581/2591	4000/1600		2		
4395-0218	10	5141/2024	4000/1575	8301/3271	6581/2591	5000/2004	6.35(1.250)	2		
4395-0219	12	6141/2418	5000/1969	8301/3271	6581/2591	6000/2398		2		
4395-0220	14	7141/2811	6000/2362	8301/3271	6581/2591	7000/2791		2		
4395-0221	10	5141/2024	4000/1575	3501/1371	2401/1021	5000/2004	2.36(1.093)	2		
4395-0222	6	3141/1237	2000/1781	3501/1371	1801/079	3000/1217		2		
4395-0223	8	4141/1630	3000/1181	3501/1371	1801/079	4000/1600	1.57(1.062)	2		
4395-0224	10	5141/2024	4000/1575	3501/1371	1801/079	5000/2004		2		
4395-0225	12	6141/2418	5000/1969	3501/1371	1801/079	6000/2398		2		
4395-0226	14	7141/2811	6000/2362	3501/1371	1801/079	7000/2791		2		
4395-0227	8	4141/1630	3000/1181	5101/209	2401/1021	4000/1600	2.36(1.093)	2		
4395-0228	10	5141/2024	4000/1575	5101/209	2401/1021	5000/2004		2		
4395-0229	12	6141/2418	5000/1969	5101/209	2401/1021	6000/2398		2		
4395-0230	14	7141/2811	6000/2362	5101/209	2401/1021	7000/2791		2		
4395-0231	10	5141/2024	4000/1575	5101/209	3401/1341	5000/2004	3.18(1.252)	2		
4395-0232	12	6141/2418	5000/1969	5101/209	3401/1341	6000/2398		2		
4395-0233	14	7141/2811	6000/2362	5101/209	3401/1341	7000/2791		2		
4395-0234	10	5141/2024	4000/1575	8301/3271	6581/2591	5000/2004	6.35(1.250)	2		
4395-0235	12	6141/2418	5000/1969	8301/3271	6581/2591	6000/2398		2		
4395-0236	14	7141/2811	6000/2362	8301/3271	6581/2591	7000/2791		2		
4395-0237	8	4141/1630	3000/1181	8301/3271	6581/2591	4000/1600		2		
4395-0238	10	5141/2024	4000/1575	8301/3271	6581/2591	5000/2004		2		
4395-0239	12	6141/2418	5000/1969	8301/3271	6581/2591	6000/2398		2		
4395-0240	14	7141/2811	6000/2362	8301/3271	6581/2591	7000/2791		2		
4395-0241	10	5141/2024	4000/1575	3501/1371	2401/1021	5000/2004	2.36(1.093)	2		

- NOTES:**
- MATERIALS:**
HOUSING: 30% GLASS FILLED NYLON 4/6, UL94V-0, COLOR: BLACK.

TERMINAL: ALLOY '51'
PLATING: *TIN OVER NICKEL
OR SELECT GOLD AND SELECT TIN OVER NICKEL
OR SELECT SILVER AND SELECT TIN OVER NICKEL
(SEE CHART)
* THE PRIMARY SHIPPING CARTON WILL BE LABELED
COMPLIANT TO RHS DIRECTIVE 2002/95/EC
AND ELV ANNEX II OF DIRECTIVE 2000/53/EC.
CARTONS WITHOUT THIS LABEL MAY CONTAIN
PRODUCT WITH TIN-LEAD.
 - PRODUCT SPEC:** PS-42815-001
 - PARTS ARE NOT TO BE MATED OR UNMATED WHILE CIRCUITS ARE LIVE.
 - PART MATES WITH MOLEX RECEPTACLE 4394.
 - WHEN USING OVERALL TIN PLATED TERMINALS:
FOR APPLICATIONS INVOLVING VIBRATION AND/OR THERMAL CYCLING, MOLEX STRONGLY
RECOMMENDS THE USE OF NYE LUBRICANT (NYOGEL 7600) ON THE MATING
SURFACES OF THE TERMINAL.
 - POLARIZING SLOTS TO BE LOCATED BETWEEN CIRCUITS ON EITHER END
OF HOUSING OF THE CIRCUIT 1 ROW, AS SHOWN.
EXCEPTION: THE 6 CIRCUIT HOUSING WILL HAVE A SINGLE SLOT ON THE CIRCUIT 1 END ONLY.
 - PARTS CONFORMS TO CLASS 'B' REQUIREMENTS OF COSMETIC SPEC-PS-45499-002.
 - REFER AS-42815-001 FOR TIN PLATED TERMINALS RECOMMENDED LUBRICATION PROCEDURE.



NEW SILVER PLATING REPAIR (MATERIAL) 2752 APPROVED 2015/02/09 CHECKED BY: [Signature] DATE: 2015/02/09	QUALITY SYMBOLS 4 PLACES ±0.008 3 PLACES ±0.008 2 PLACES ±0.2 1 PLACE ±0.2 0 PLACE ±0.2	GENERAL TOLERANCES (UNLESS SPECIFIED) mm INCH ±0.15 ±0.006 ±0.25 ±0.010 ±0.50 ±0.020 ±1.00 ±0.040 ±1.50 ±0.060 ±2.00 ±0.080 ±3.00 ±0.120 ±4.00 ±0.160 ±5.00 ±0.200 ±6.00 ±0.240 ±8.00 ±0.320 ±10.00 ±0.400 ±15.00 ±0.600 ±20.00 ±0.800 ±30.00 ±1.200 ±40.00 ±1.600 ±50.00 ±2.000 ±60.00 ±2.400 ±80.00 ±3.200 ±100.00 ±4.000	DIMENSION STYLE MM/IN DRAWN BY: COMERC1 CHECKED BY: BRO2 APPROVED BY: KPRASAD DATE: 8/21/19 DATE: 2014/02/13 DATE: 2015/02/09	SCALE 2:1 DESIGN UNITS METRIC THIRD ANGLE PROJECTION	TITLE VERTICAL HEADER DUAL ROW, 6-14 CIRCUIT MINI-FIT SR. molex MATERIAL NO: SEE CHART DOCUMENT NO: SD-43915-002 SHEET NO: 1 OF 2
	DRAFT WHERE APPLICABLE MUST REMAIN WITHIN DIMENSIONS				
	SIZE D THIS DRAWING CONTAINS INFORMATION THAT IS PROPRIETARY TO MOLEX INCORPORATED AND SHOULD NOT BE USED WITHOUT WRITTEN PERMISSION				
	INCORPORATED AND SHOULD NOT BE USED WITHOUT WRITTEN PERMISSION				

20 19 18 17 16 15 14 13 12 11 10 9 8 7 6 5 4 3 2 1

MATERIAL NUMBER	CIRCUITS	DMX'A	DMX'B	DMX'C	DMX'D	DMX'E	PCB THICKNESS	QUANTITY OF POLARIZING SLOTS	TERMINAL PLATING	STATUS
4395-1101	6	314/112371	30,00/119691	3,50/11937	1,80/10718	20,90/112371		1		
4395-1102	8	414/114301	30,00/11811	3,50/11937	1,80/10718	40,90/116101		2		
4395-1103	10	514/112341	40,00/115751	3,50/11937	1,80/10718	50,90/120041	157/0621	2		
4395-1104	12	614/112481	50,00/119691	3,50/11937	1,80/10718	60,90/123981		2		
4395-1105	14	714/112811	60,00/123621	3,50/11937	1,80/10718	70,90/127921		2		
4395-1106	6	314/112371	30,00/119691	5,10/12011	2,60/11021	30,90/112371		1		
4395-1107	8	414/114301	30,00/11811	5,10/12011	2,60/11021	40,90/116101		2		
4395-1108	10	514/112341	40,00/115751	5,10/12011	2,60/11021	50,90/120041	236/10931	2		
4395-1109	12	614/112481	50,00/119691	5,10/12011	2,60/11021	60,90/123981		2		
4395-1110	14	714/112811	60,00/123621	5,10/12011	2,60/11021	70,90/127921		2		
4395-1111	6	314/112371	30,00/119691	5,10/12011	3,40/11341	30,90/112371		1		
4395-1112	8	414/114301	30,00/11811	5,10/12011	3,40/11341	40,90/116101		2		
4395-1113	10	514/112341	40,00/115751	5,10/12011	3,40/11341	50,90/120041	318/11251	2		
4395-1114	12	614/112481	50,00/119691	5,10/12011	3,40/11341	60,90/123981		2		
4395-1115	14	714/112811	60,00/123621	5,10/12011	3,40/11341	70,90/127921		2		
4395-1116	6	314/112371	30,00/119691	8,30/13271	6,58/12591	30,90/112371		1		
4395-1117	8	414/114301	30,00/11811	8,30/13271	6,58/12591	40,90/116101		2		
4395-1118	10	514/112341	40,00/115751	8,30/13271	6,58/12591	50,90/120041	635/12501	2		
4395-1119	12	614/112481	50,00/119691	8,30/13271	6,58/12591	60,90/123981		2		
4395-1120	14	714/112811	60,00/123621	8,30/13271	6,58/12591	70,90/127921		2		
4395-1121	10	514/112341	40,00/115751	3,50/11937	2,60/11021	50,90/120041	236/10931	2		
4395-1122	14	714/112811	60,00/123621	3,50/11937	1,80/10718	70,90/127921	157/0621	2		

OVERALL T/N PLANNED FOR OBSOLETE

SEE SHEET 1 DEC. NO. 043915-2752 DWN:BR02 2013/10/25 CHK: N APP:KPRASAD 2015/02/09 REV: 1	QUALITY SYMBOLS ∇=0 ∇=0 ∇=0	GENERAL TOLERANCES (UNLESS SPECIFIED) 4 PLACES ±.008 3 PLACES ±.008 2 PLACES ±0.2 1 PLACE ±.008 0 PLACE ±.008	DIMENSION STYLE MM/IN DRAWN BY COMERC I DATE 8/21/1971 CHECKED BY BRO2 DATE 2014/02/13 APPROVED BY KPRASAD DATE 2015/02/09	SCALE 1:2 DESIGN UNITS METRIC THIRD ANGLE PROJECTION	TITLE VERTICAL HEADER DUAL ROW, 6-14 CIRCUIT MINI-FIT SR.	MATERIAL NO. SEE CHART DOCUMENT NO. SD-43915-002	SHEET NO. 2 OF 2	
	DRAFT WHERE APPLICABLE MUST REMAIN WITHIN DIMENSIONS			INCORPORATED AND SHOULD NOT BE USED WITHOUT WRITTEN PERMISSION	molex			
	THIS DRAWING CONTAINS INFORMATION THAT IS PROPRIETARY TO MOLEX							
	INCORPORATED AND SHOULD NOT BE USED WITHOUT WRITTEN PERMISSION							

IS: Home_D.P.-Act.1 Rev. 5 2016/01/11