

Excellent Integrated System Limited

Stocking Distributor

Click to view price, real time Inventory, Delivery & Lifecycle Information:

[Molex Connector Corporation](#)
[0439151219](#)

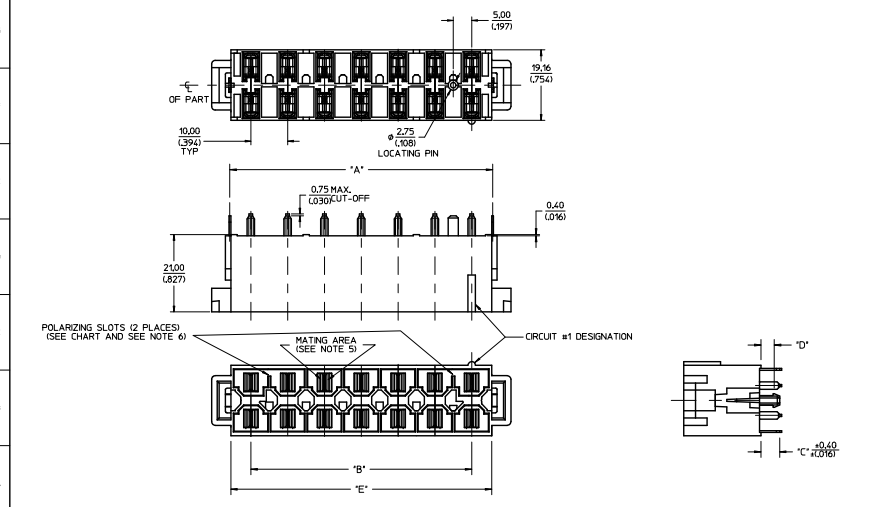
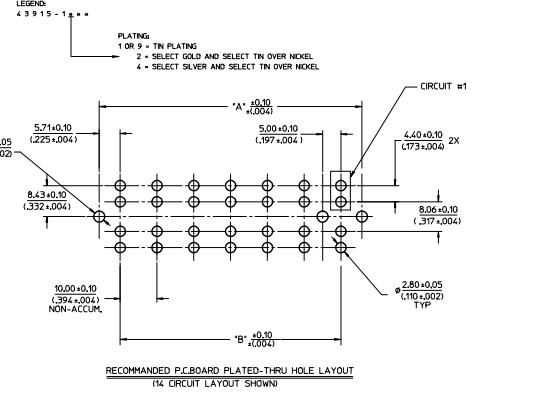
For any questions, you can email us directly:

sales@integrated-circuit.com

MATERIAL NUMBER	CIRCUITS	DM'A'	DM'B'	DM'C'	DM'D'	DM'E'	PCB THICKNESS	QUANTITY OF POLARIZING SLOTS	TERMINAL PLATING	STATUS
4395-1201	6	3141/2371	2000/1781	3501/1371	1801/079	3000/1217		1		
4395-1202	8	4141/1630	3000/1181	3501/1371	1801/079	4000/1650		2		
4395-1203	10	5141/2024	4000/1575	3501/1371	1801/079	5000/2004	1.57(1.062)	2		
4395-1204	12	6141/2418	5000/1969	3501/1371	1801/079	6000/2398		2		
4395-1205	14	7141/2811	6000/2362	3501/1371	1801/079	7000/2791		2		
4395-1206	6	3141/2371	2000/1781	3501/1371	2401/1021	3000/1217		1		
4395-1207	8	4141/1630	3000/1181	3501/1371	2401/1021	4000/1650		2		
4395-1208	10	5141/2024	4000/1575	3501/1371	2401/1021	5000/2004	2.36(1.093)	2		
4395-1209	12	6141/2418	5000/1969	3501/1371	2401/1021	6000/2398		2		
4395-1210	14	7141/2811	6000/2362	3501/1371	2401/1021	7000/2791		2	SELECT GOLD (SEE LEGEND)	ACTIVE
4395-1211	6	3141/2371	2000/1781	3501/1371	3401/1341	3000/1217		1		
4395-1212	8	4141/1630	3000/1181	3501/1371	3401/1341	4000/1650		2		
4395-1213	10	5141/2024	4000/1575	3501/1371	3401/1341	5000/2004	3.18(1.252)	2		
4395-1214	12	6141/2418	5000/1969	3501/1371	3401/1341	6000/2398		2		
4395-1215	14	7141/2811	6000/2362	3501/1371	3401/1341	7000/2791		2		
4395-1216	6	3141/2371	2000/1781	3501/1371	6581/2591	3000/1217		1		
4395-1217	8	4141/1630	3000/1181	3501/1371	6581/2591	4000/1650		2		
4395-1218	10	5141/2024	4000/1575	3501/1371	6581/2591	5000/2004	6.35(1.250)	2		
4395-1219	12	6141/2418	5000/1969	3501/1371	6581/2591	6000/2398		2		
4395-1220	14	7141/2811	6000/2362	3501/1371	6581/2591	7000/2791		2		
4395-1221	10	5141/2024	4000/1575	3501/1371	2401/1021	5000/2004	2.36(1.093)	2		
4395-1401	6	3141/2371	2000/1781	3501/1371	1801/079	3000/1217		2		
4395-1402	8	4141/1630	3000/1181	3501/1371	1801/079	4000/1650	1.57(1.062)	2		
4395-1403	10	5141/2024	4000/1575	3501/1371	1801/079	5000/2004		2		
4395-1404	12	6141/2418	5000/1969	3501/1371	1801/079	6000/2398		2		
4395-1405	14	7141/2811	6000/2362	3501/1371	1801/079	7000/2791		2		
4395-1406	6	3141/2371	2000/1781	3501/1371	2401/1021	3000/1217		2		
4395-1407	8	4141/1630	3000/1181	3501/1371	2401/1021	4000/1650		2		
4395-1408	10	5141/2024	4000/1575	3501/1371	2401/1021	5000/2004	2.36(1.093)	2		
4395-1409	12	6141/2418	5000/1969	3501/1371	2401/1021	6000/2398		2		
4395-1410	14	7141/2811	6000/2362	3501/1371	2401/1021	7000/2791		2	SELECT SILVER (SEE LEGEND)	ACTIVE
4395-1411	6	3141/2371	2000/1781	3501/1371	3401/1341	3000/1217		2		
4395-1412	8	4141/1630	3000/1181	3501/1371	3401/1341	4000/1650		2		
4395-1413	10	5141/2024	4000/1575	3501/1371	3401/1341	5000/2004	3.18(1.252)	2		
4395-1414	12	6141/2418	5000/1969	3501/1371	3401/1341	6000/2398		2		
4395-1415	14	7141/2811	6000/2362	3501/1371	3401/1341	7000/2791		2		
4395-1416	6	3141/2371	2000/1781	3501/1371	6581/2591	3000/1217		2		
4395-1417	8	4141/1630	3000/1181	3501/1371	6581/2591	4000/1650		2		
4395-1418	10	5141/2024	4000/1575	3501/1371	6581/2591	5000/2004	6.35(1.250)	2		
4395-1419	12	6141/2418	5000/1969	3501/1371	6581/2591	6000/2398		2		
4395-1420	14	7141/2811	6000/2362	3501/1371	6581/2591	7000/2791		2		
4395-1421	10	5141/2024	4000/1575	3501/1371	2401/1021	5000/2004	2.36(1.093)	2		

- NOTES:**
- MATERIALS:**
HOUSING: 30% GLASS FILLED NYLON 4/6, UL94V-0, COLOR: BLACK.

TERMINAL: ALLOY '51'
PLATING: *TIN OVER NICKEL
OR SELECT GOLD AND SELECT TIN OVER NICKEL
OR SELECT SILVER AND SELECT TIN OVER NICKEL
(SEE CHART)
* THE PRIMARY SHIPPING CARTON WILL BE LABELED
COMPLIANT TO RHS DIRECTIVE 2002/95/EC
AND ELV ANNEX II OF DIRECTIVE 2000/53/EC.
CARTONS WITHOUT THIS LABEL MAY CONTAIN
PRODUCT WITH TIN-LEAD.
 - PRODUCT SPEC:** PS-42815-001
 - PARTS ARE NOT TO BE MATED OR UNMATED WHILE CIRCUITS ARE LIVE.
 - PART MATES WITH MOLEX RECEPTACLE 4394.
 - WHEN USING OVERALL TIN PLATED TERMINALS:
FOR APPLICATIONS INVOLVING VIBRATION AND/OR THERMAL CYCLING, MOLEX STRONGLY
RECOMMENDS THE USE OF NYE LUBRICANT (NYOGEL 7600) ON THE MATING
SURFACES OF THE TERMINAL.
 - POLARIZING SLOTS TO BE LOCATED BETWEEN CIRCUITS ON EITHER END
OF HOUSING OF THE CIRCUIT 1 ROW, AS SHOWN.
EXCEPTION: THE 6 CIRCUIT HOUSING WILL HAVE A SINGLE SLOT ON THE CIRCUIT 1 END ONLY.
 - PARTS CONFORMS TO CLASS 'B' REQUIREMENTS OF COSMETIC SPEC-PS-45499-002.
 - REFER AS-42815-001 FOR TIN PLATED TERMINALS RECOMMENDED LUBRICATION PROCEDURE.



QUALITY SYMBOLS	GENERAL TOLERANCES (UNLESS SPECIFIED)	DIMENSION STYLE		SCALE	DESIGN UNITS	THIRD ANGLE PROJECTION
		MM	INCH			
▽=0	4 PLACES ±0.008	mm	INCH	2:1	METRIC	VERTICAL HEADER DUAL ROW, 6-14 CIRCUIT MINI-FIT SR.
▽=0	3 PLACES ±0.008	mm	INCH	2:1	METRIC	
▽=0	2 PLACES ±0.2	mm	INCH	2:1	METRIC	
▽=0	1 PLACE ±0.2	mm	INCH	2:1	METRIC	
DRAFT WHERE APPLICABLE MUST REMAIN WITHIN DIMENSIONS		ANGULAR ±1/2°		MATERIAL NO.		DOCUMENT NO.
NEW SILVER PLATING		SEE CHART		SD-43915-002		SHEET NO. 1 OF 2

