

Excellent Integrated System Limited

Stocking Distributor

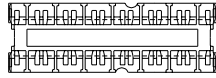
Click to view price, real time Inventory, Delivery & Lifecycle Information:

[Molex Connector Corporation](#)
[0439801004](#)

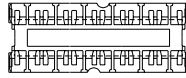
For any questions, you can email us directly:

sales@integrated-circuit.com

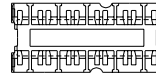
MATERIAL-NUMBER	CIRCUITS	DIM. "A"
43980-1001	6	31.30/(1,232)
43980-1002	8	41.30/(1,626)
43980-1003	10	51.30/(2,020)
43980-1004	12	61.30/(2,413)
43980-1005	14	71.30/(2,807)



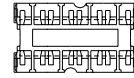
14 CIRCUIT



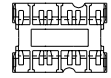
12 CIRCUIT



10 CIRCUIT



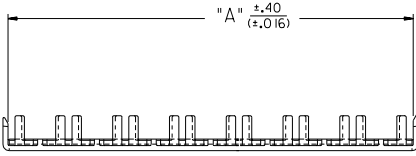
8 CIRCUIT



6 CIRCUIT

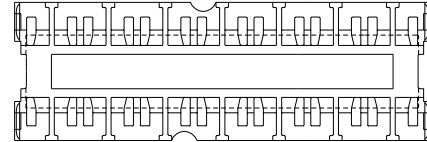
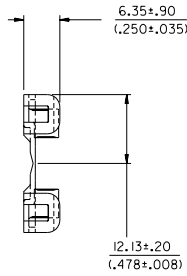
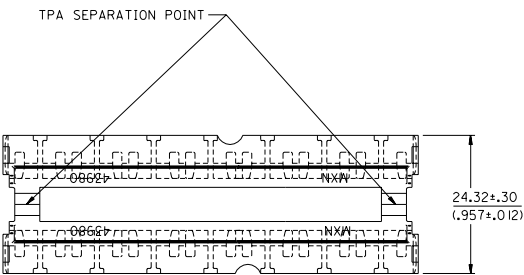
CIRCUIT SIZES

SCALE: 1:1



NOTES:

1. MATERIAL: POLYESTER, U.L. 94V-0. COLOR: NATURAL (WHITE)
2. PRODUCT SPEC.: NONE
3. USED ON 43914 RECEPTACLE HOUSING AND 43938 PLUG HOUSING.



ADDED TOLERANCES EC NO. UCR 1999-0808 DRAWN: COMERC 99/05/21 CHK: COMERC 99/05/21 APPR: COMERC 99/05/21	QUALITY SYMBOLS MAJOR $\nabla=0$ CRITICAL $\nabla=0$	GENERAL TOLERANCES: (UNLESS SPECIFIED) 4 PLACES $\pm 0.---$ $\pm.---$ 3 PLACES $\pm 0.---$ $\pm.---$ 2 PLACES $\pm 0.---$ $\pm.---$ 1 PLACE $\pm 0.---$ $\pm.---$ ANGULAR: \neq	SCALE 2: 1 DESIGN UNITS <input checked="" type="checkbox"/> mm <input type="checkbox"/> INCH	DRAWN BY & DATE COMERC 97/08/21 CHECKED BY & DATE COMERC 97/08/25 APPROVED BY & DATE FRY 97/08/26	DIMENSIONS: <input checked="" type="checkbox"/> mm <input type="checkbox"/> INCH <input type="checkbox"/> mm ONLY <input type="checkbox"/> INCH <input type="checkbox"/> mm	SHT 1 REV REVISE ON CAD ONLY	
	TITLE: TWIN TPA'S DUAL ROW 6-14 CIRCUIT (MINI-FIT SR.)	MOLEX INCORPORATED		CAD FILENAME S4398002.DGN	MATERIAL NO. SEE CHART	DRAWING NO. SD-43980-002	SHEET NO. 1 OF 1
	DRAFT WHERE APPLICABLE MUST REMAIN WITHIN DIMENSIONS	THIS DRAWING CONTAINS INFORMATION THAT IS PROPRIETARY TO MOLEX INCORPORATED AND SHOULD NOT BE USED WITHOUT WRITTEN PERMISSION.					
	REV B I	6	5	4	3	2	1