

Excellent Integrated System Limited

Stocking Distributor

Click to view price, real time Inventory, Delivery & Lifecycle Information:

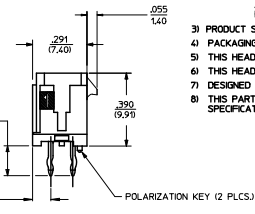
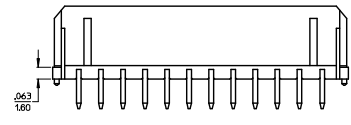
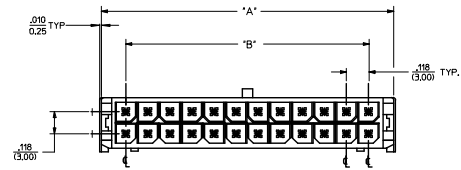
[Molex Connector Corporation](#)
[0440670802](#)

For any questions, you can email us directly:

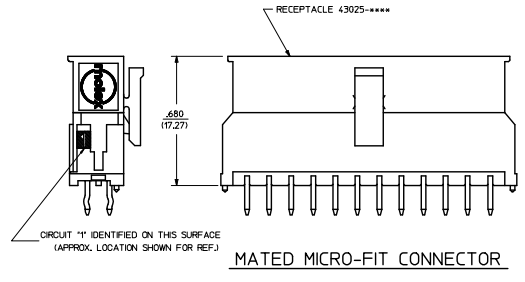
sales@integrated-circuit.com

ASSEMBLY ITEM NUMBER	PART CHARACTERISTICS FOR VERTICAL	
	NUMBER OF POSITION	PLATING OPTION
44067-0201	02	A
44067-0202	02	B
44067-0203	02	C
44067-0401	04	A
44067-0402	04	B
44067-0403	04	C
44067-0601	06	A
44067-0602	06	B
44067-0603	06	C
44067-0801	08	A
44067-0802	08	B
44067-0803	08	C
44067-1001	10	A
44067-1002	10	B
44067-1003	10	C
44067-1201	12	A
44067-1202	12	B
44067-1203	12	C
44067-1401	14	A
44067-1402	14	B
44067-1403	14	C
44067-1601	16	A
44067-1602	16	B
44067-1603	16	C
44067-1801	18	A
44067-1802	18	B
44067-1803	18	C
44067-2001	20	A
44067-2002	20	B
44067-2003	20	C
44067-2201	22	A
44067-2202	22	B
44067-2203	22	C
44067-2401	24	A
44067-2402	24	B
44067-2403	24	C

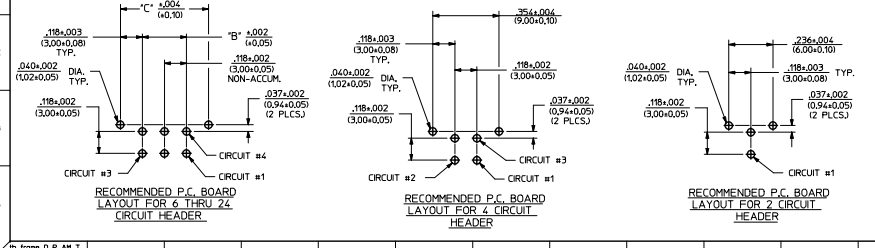
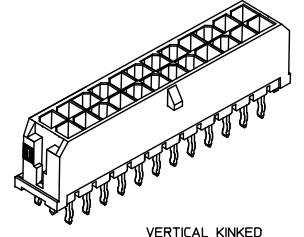
QTY. NO.	DIM. 'A'	DIM. 'B'	DIM. 'C'
2	.262(6.65)	NA	SEE LAYOUT
4	.380(9.65)	.118(3.00)	SEE LAYOUT
6	.498(12.65)	.236(6.00)	.472(12.00)
8	.616(15.65)	.354(9.00)	.590(15.00)
10	.734(18.65)	.472(12.00)	.708(18.00)
12	.852(21.65)	.591(15.00)	.827(21.00)
14	.970(24.65)	.709(18.00)	.945(24.00)
16	1.088(27.65)	.827(21.00)	1.063(27.00)
18	1.206(30.65)	.945(24.00)	1.181(30.00)
20	1.325(33.65)	1.063(27.00)	1.299(33.00)
22	1.443(36.65)	1.181(30.00)	1.417(36.00)
24	1.561(39.65)	1.299(33.00)	1.535(39.00)



- NOTES**
- 1) MATERIAL:
HOUSING - LIQUID CRYSTAL POLYMER (LCP), GLASS-FILLED UL94V-0, COLOR - BLACK
TERMINAL - BRASS ALLOY
 - 2) FINISHES:
A - .000060(0.00152) MIN. REFLOWED MATTE TIN OVER .000050(0.00127) MIN. NICKEL PLATE. FINISH IS BRIGHT IN APPEARANCE. THICKNESS AS APPLIED PRIOR TO REFLOW.
B - .000015(0.00038) MIN. SELECT GOLD IN CONTACT AREA, .000100(0.00254) MIN. SELECT MATTE TIN ON SOLDER TAILS, BOTH OVER .000050(0.00127) MIN. NICKEL PLATE.
C - .000030(0.00076) MIN. SELECT GOLD IN CONTACT AREA, .000100(0.00254) MIN. SELECT MATTE TIN ON SOLDER TAILS, BOTH OVER .000050(0.00127) MIN. NICKEL PLATE.
 - 3) PRODUCT SPECIFICATION: PS-43045.
 - 4) PACKAGING SPECIFICATIONS ARE SHOWN ON DRAWING PK-70873-0314.
 - 5) THIS HEADER MATES WITH MICRO-FIT RECEPTACLE 43025-****.
 - 6) THIS HEADER IS DESIGNED IN METRIC.
 - 7) DESIGNED FOR .140(3.56) MAX. THICK P.C. BOARDS.
 - 8) THIS PART CONFORMS TO CLASS B REQUIREMENTS OF COSMETIC SPECIFICATION PS-45499-002.



VERTICAL O.T.R. THRU HOLE
(LONGER P.C. TAIL LENGTH)



QUALITY SYMBOLS	GENERAL TOLERANCES (UNLESS SPECIFIED)		DIMENSION STYLE		SCALE	DESIGN UNITS	THIRD ANGLE PROJECTION
	mm	INCH	IN/MM	DATE			
▽=0	4 PLACES ±.010	±.010	DRAWN BY	1997/12/25	4:1	METRIC	MICRO-FIT(3.0) 2-24 CKT. VERTICAL
▽=0	3 PLACES ±.025	±.014	CHECKED BY	DATE			
▽=0	1 PLACE ±.036	±.014	APPROVED BY	DATE			
	0 PLACE ±.036	±.014	APPROVED BY	DATE			
			MATERIAL NO.				
			ANGULAR ±1/2°				
			DRAFT WHERE APPLICABLE MUST REMAIN WITHIN DIMENSIONS				
			SEE CHART				
			THIS DRAWING CONTAINS INFORMATION THAT IS PROPRIETARY TO MOLEX INCORPORATED AND SHOULD NOT BE USED WITHOUT WRITTEN PERMISSION				