

## Excellent Integrated System Limited

Stocking Distributor

Click to view price, real time Inventory, Delivery & Lifecycle Information:

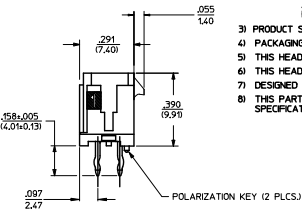
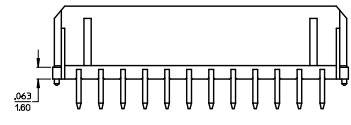
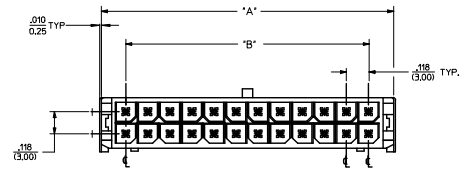
[Molex Connector Corporation](#)  
[0440671603](#)

For any questions, you can email us directly:

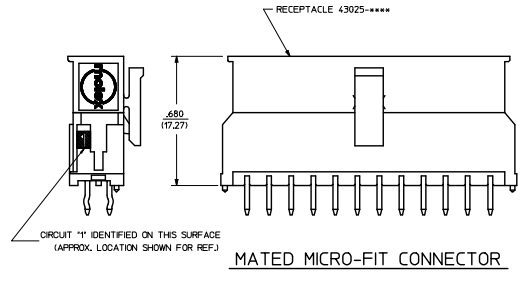
[sales@integrated-circuit.com](mailto:sales@integrated-circuit.com)

ASSEMBLY ITEM NUMBER	PART CHARACTERISTICS FOR VERTICAL	
	NUMBER OF POSITION	PLATING OPTION
44067-0201	02	A
44067-0202	02	B
44067-0203	02	C
44067-0401	04	A
44067-0402	04	B
44067-0403	04	C
44067-0601	06	A
44067-0602	06	B
44067-0603	06	C
44067-0801	08	A
44067-0802	08	B
44067-0803	08	C
44067-1001	10	A
44067-1002	10	B
44067-1003	10	C
44067-1201	12	A
44067-1202	12	B
44067-1203	12	C
44067-1401	14	A
44067-1402	14	B
44067-1403	14	C
44067-1601	16	A
44067-1602	16	B
44067-1603	16	C
44067-1801	18	A
44067-1802	18	B
44067-1803	18	C
44067-2001	20	A
44067-2002	20	B
44067-2003	20	C
44067-2201	22	A
44067-2202	22	B
44067-2203	22	C
44067-2401	24	A
44067-2402	24	B
44067-2403	24	C

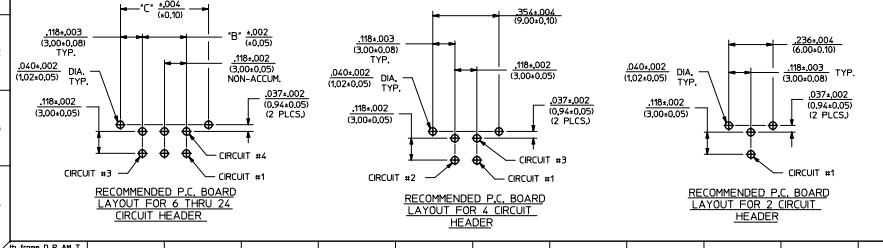
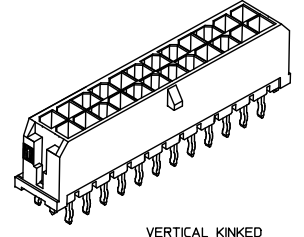
OKT. NO.	DIM. "A"	DIM. "B"	DIM. "C"
2	.262(6.65)	NA	SEE LAYOUT
4	.380(9.65)	.118(3.00)	SEE LAYOUT
6	.498(12.65)	.236(6.00)	.472(12.00)
8	.616(15.65)	.354(9.00)	.590(15.00)
10	.734(18.65)	.472(12.00)	.708(18.00)
12	.852(21.65)	.591(15.00)	.827(21.00)
14	.970(24.65)	.709(18.00)	.945(24.00)
16	1.088(27.65)	.827(21.00)	1.063(27.00)
18	1.206(30.65)	.945(24.00)	1.181(30.00)
20	1.325(33.65)	1.063(27.00)	1.299(33.00)
22	1.443(36.65)	1.181(30.00)	1.417(36.00)
24	1.561(39.65)	1.299(33.00)	1.535(39.00)



- NOTES**
- MATERIAL:**  
HOUSING - LIQUID CRYSTAL POLYMER (LCP), GLASS-FILLED UL94V-0, COLOR - BLACK  
TERMINAL - BRASS ALLOY
  - FINISHES:**  
"A" - .000060(0.00152) MIN. REFLOWED MATTE TIN OVER .000050(0.00127) MIN. NICKEL PLATE. FINISH IS BRIGHT IN APPEARANCE. THICKNESS AS APPLIED PRIOR TO REFLOW)  
"B" - .000015(0.00038) MIN. SELECT GOLD IN CONTACT AREA, .000100(0.00254) MIN. SELECT MATTE TIN ON SOLDER TAILS, BOTH OVER .000050(0.00127) MIN. NICKEL PLATE.  
"C" - .000030(0.00076) MIN. SELECT GOLD IN CONTACT AREA, .000100(0.00254) MIN. SELECT MATTE TIN ON SOLDER TAILS, BOTH OVER .000050(0.00127) MIN. NICKEL PLATE.
  - PRODUCT SPECIFICATION: PS-43045.
  - PACKAGING SPECIFICATIONS ARE SHOWN ON DRAWING PK-70873-0314.
  - THIS HEADER MATES WITH MICRO-FIT RECEPTACLE 43025-\*\*\*\*.
  - THIS HEADER IS DESIGNED IN METRIC.
  - DESIGNED FOR .140(3.56) MAX. THICK P.C. BOARDS.
  - THIS PART CONFORMS TO CLASS B REQUIREMENTS OF COSMETIC SPECIFICATION PS-45499-002.



VERTICAL O.T.R. THRU HOLE  
(LONGER P.C. TAIL LENGTH)



QUALITY SYMBOLS	GENERAL TOLERANCES (UNLESS SPECIFIED)		DIMENSION STYLE		SCALE	DESIGN UNITS	THIRD ANGLE PROJECTION
	mm	INCH	IN/MM	DATE			
∇=0	4 PLACES	±.010	INCH	1997/12/25	4:1	METRIC	MICRO-FIT(3.0) 2-24 CKT. VERTICAL
∇=0	3 PLACES	±.014	INCH	1997/12/25			
∇=0	1 PLACE	±.036	INCH	2016/01/06			
∇=0	0 PLACE	±.076	INCH	2016/01/06			

REVISION FINISH A  
EC MOL LCP 2016-2260  
TDRN:JGFX 2016/01/04  
CHK:SSUSEK 2015/10/16  
APP:SMITH 2016/01/06  
DESIGNER:SMITH

QUALITY SYMBOLS: ∇=0

GENERAL TOLERANCES (UNLESS SPECIFIED):  
4 PLACES ±.010 INCH  
3 PLACES ±.014 INCH  
1 PLACE ±.036 INCH  
0 PLACE ±.076 INCH

DIMENSION STYLE: IN/MM

SCALE: 4:1

DESIGN UNITS: METRIC

THIRD ANGLE PROJECTION

DRAWN BY: A.GUZIK DATE: 1997/12/25  
CHECKED BY: A.GUZIK DATE: 1997/12/25  
APPROVED BY: FSM TH DATE: 2016/01/06

ANGULAR ±1/2°

DRAFT WHERE APPLICABLE MUST REMAIN WITHIN DIMENSIONS

SEE CHART

THIS DRAWING CONTAINS INFORMATION THAT IS PROPRIETARY TO MOLEX INCORPORATED AND SHOULD NOT BE USED WITHOUT WRITTEN PERMISSION

DOCUMENT NO. SD-44067-001

SHEET NO. 1 OF 1