

Excellent Integrated System Limited

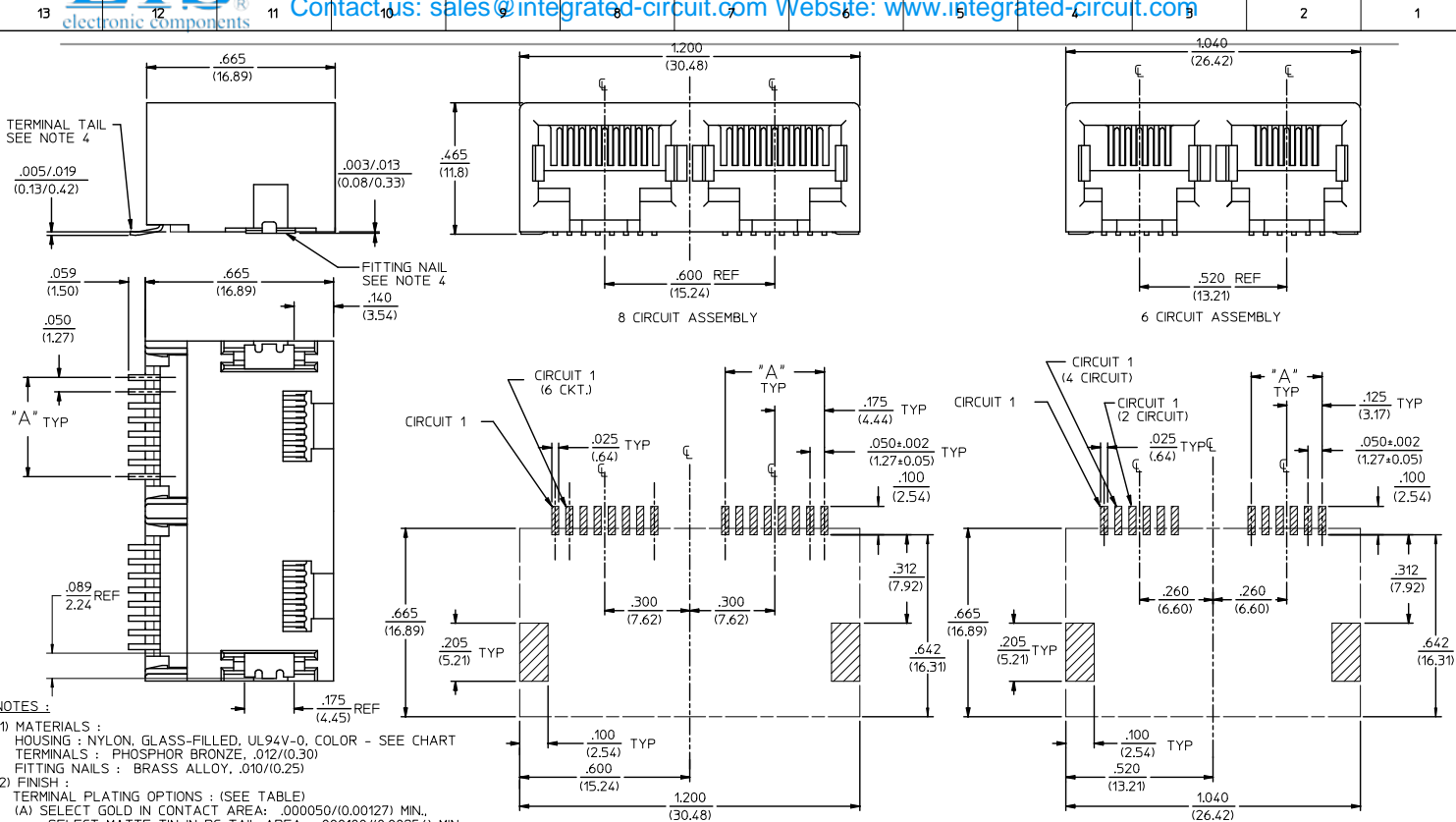
Stocking Distributor

Click to view price, real time Inventory, Delivery & Lifecycle Information:

[Molex Connector Corporation](#)
[0441930015](#)

For any questions, you can email us directly:

sales@integrated-circuit.com



- NOTES:**
- MATERIALS:**
HOUSING: NYLON, GLASS-FILLED, UL94V-0, COLOR - SEE CHART
TERMINALS: PHOSPHOR BRONZE, .012/(0.30)
FITTING NAILS: BRASS ALLOY, .010/(0.25)
 - FINISH:**
TERMINAL PLATING OPTIONS: (SEE TABLE)
(A) SELECT GOLD IN CONTACT AREA: .000050/(0.00127) MIN.
*SELECT MATTE TIN IN PC TAIL AREA: .000100/(0.00254) MIN.
WITH OVERALL NICKEL UNDERPLATE: .000050/(0.00127) MIN.
(B) SELECT GOLD IN CONTACT AREA: .000030/(0.00076) MIN.
*SELECT MATTE TIN IN PC TAIL AREA: .000100/(0.00254) MIN.
WITH OVERALL NICKEL UNDERPLATE: .000050/(0.00127) MIN.
(C) SELECT GOLD IN CONTACT AREA: .000015/(0.00038) MIN.
*SELECT MATTE TIN IN PC TAIL AREA: .000100/(0.00254) MIN.
WITH OVERALL NICKEL UNDERPLATE: .000050/(0.00127) MIN.
FITTING NAILS:
*100 MICRONS MATTE TIN OVER 50 MICRONS NICKEL UNDERPLATE
*THE PRIMARY SHIPPING CARTON WILL BE LABELED "ELV AND RoHS COMPLIANT". CARTONS WITHOUT THIS LABEL MAY CONTAIN PRODUCT WITH TIN-LEAD IN THE PC TAIL AREA.
 - PRODUCT SPECIFICATION:** PS-43743-001
 - COPLANARITY SPECIFICATIONS:**
WITH THE MODULAR JACK SITTING ON A LEVEL SURFACE, THE MAXIMUM GAP BETWEEN THE LEVEL SURFACE AND ALL TERMINAL TAILS AND BOTH FITTING NAILS IS .006/(0.15).
 - FOR ASSEMBLIES HAVING VOIDED CIRCUITS, THE TAIL PORTION IS CUT AND REMOVED. THE MATING PORTION OF THE TERMINAL REMAINS INTACT. VOIDED CIRCUITS MUST BE THE SAME FOR BOTH PORTS.
 - CONVECTION SOLDERING TECHNOLOGY SHOULD BE USED WHEN GANGING MODULAR JACKS WITH INBOARD NAILS SIDE-BY-SIDE.
 - THIS PART CONFORMS TO CLASS B REQUIREMENTS OF COSMETIC SPECIFICATION PS-45499-002.

PC BOARD LAYOUT FOR 8 POSITION HOUSING (COMPONENT SIDE OF BOARD)

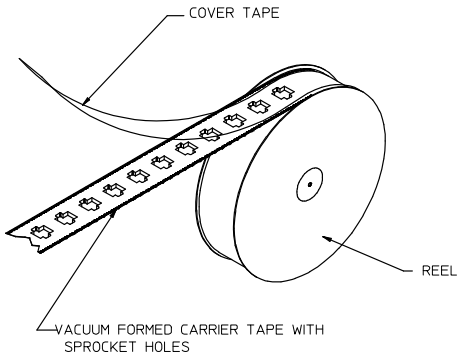
PC BOARD LAYOUT FOR 6 POSITION HOUSING (COMPONENT SIDE OF BOARD)

| | | | | | | | | |
|--|--------------------------------------|--|--|---------------------------------|--|---|----------------------|--|
| REVISED NOTES REC NO: UCP2009-1244 DRAWN: JACUSTE/EK/2008/12/10 CHKD: J.BELL APPR: PSMITH 2008/07/20 | QUALITY SYMBOLS ▽=0 ▽=0 | GENERAL TOLERANCES (UNLESS SPECIFIED) | | DIMENSION STYLE IN/MM | | SCALE 1:1 | DESIGN UNITS INCH | THIRD ANGLE PROJECTION |
| | | 4 PLACES ± --- ± --- | | DRAWN BY MUELLER | | DATE 98/06/11 | | TITLE 4, 6, & 8 CIRCUIT DUAL PORT SMT MODULAR JACK W/ FLUSH MOUNT NAILS MOLEX INCORPORATED |
| | | 3 PLACES ± --- ± .010 | | CHECKED BY ROBERTS | | DATE 98/06/16 | | |
| | | 2 PLACES ± 0.25 ± .015 | | APPROVED BY EDGLEY | | DATE 98/06/17 | | |
| 1 PLACE ± 0.38 ± --- | | ANGULAR ± 1/2° | | MATERIAL NO. SEE SHT 2 | | DOCUMENT NO. SD-44193-001 | | |
| DRAFT WHERE APPLICABLE MUST REMAIN WITHIN DIMENSIONS | | | | SIZE C | | THIS DRAWING CONTAINS INFORMATION THAT IS PROPRIETARY TO MOLEX INCORPORATED AND SHOULD NOT BE USED WITHOUT WRITTEN PERMISSION | | |

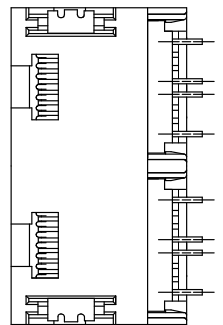
| ASSEMBLY ITEM NO. | CONNECTOR SIZE | CIRCUIT SIZE | TERMINAL PLATING | TAPE & REEL PACKAGING NO. | VOIDED CIRCUITS | HOUSING COLOR |
|-------------------|----------------|--------------|------------------|---------------------------|-----------------|---------------|
| J | 44193-0001 | 8 | 4 | A | PK-70873-7004 | NA |
| | 44193-0002 | 8 | 6 | A | PK-70873-7004 | |
| | 44193-0003 | 8 | 8 | A | PK-70873-7004 | |
| I | 44193-0004 | 6 | 4 | A | PK-70873-7003 | |
| | 44193-0005 | 6 | 6 | A | PK-70873-7003 | |
| | 44193-0006 | 8 | 4 | B | PK-70873-7004 | |
| | 44193-0007 | 8 | 6 | B | PK-70873-7004 | |
| H | 44193-0008 | 8 | 8 | B | PK-70873-7004 | |
| | 44193-0009 | 6 | 4 | B | PK-70873-7003 | |
| | 44193-0010 | 6 | 6 | B | PK-70873-7003 | |
| | 44193-0011 | 8 | 4 | C | PK-70873-7004 | |
| G | 44193-0012 | 8 | 6 | C | PK-70873-7004 | |
| | 44193-0013 | 8 | 8 | C | PK-70873-7004 | |
| | 44193-0014 | 6 | 4 | C | PK-70873-7003 | |
| F | 44193-0015 | 6 | 6 | C | PK-70873-7003 | |
| | 44193-0016 | 6 | 2 | A | PK-70873-7003 | |
| | 44193-0017 | 6 | 2 | B | PK-70873-7003 | |
| | 44193-0018 | 6 | 2 | C | PK-70873-7003 | |

BLACK

| HOUSING SIZE | CIRCUIT SIZE | DIM. A |
|--------------|--------------|-------------|
| 6 | 6 | .250 (6.35) |
| 6 | 4 | .150 (3.81) |
| 6 | 2 | .050 (1.27) |
| 8 | 8 | .350 (8.89) |
| 8 | 6 | .250 (6.35) |
| 8 | 4 | .150 (3.81) |



TAPE AND REEL PACKAGING



TYPICAL VIEW SHOWING VOIDED CIRCUIT (CIRCUITS 2,3,6,7 SHOWN VOIDED)

| | | | | | | | | |
|--|--|---------------------------------------|--------------|-------------------------------------|--------------|-------------------------------------|------------------------|--|
| <p>OBSOLETE 441930019 EC NO: UCP2008-1189 DRAWN: JHELL 2007/11/30 CHECKED: SCHMIDT 2008/02/20 APPROVED: SMITH 2008/02/04</p> | <p>QUALITY SYMBOLS ▽=0 ▽=0</p> | GENERAL TOLERANCES (UNLESS SPECIFIED) | | DIMENSION STYLE | SCALE | DESIGN UNITS | THIRD ANGLE PROJECTION | |
| | | | | IN/MM | 4:1 | INCH | | |
| | | 4 PLACES ±--- | ±--- | | | DRAWN BY DATE MUELLER 98/06/11 | | |
| | | 3 PLACES ±--- | ±.010 | | | CHECKED BY DATE ROBERTS 98/06/16 | | |
| 2 PLACES ±0.25 | ±.015 | | | APPROVED BY DATE EDGLEY 98/06/17 | | | | |
| 1 PLACE ±0.38 | ±--- | | | ANGULAR ±1/2° | | | | |
| DRAFT WHERE APPLICABLE MUST REMAIN WITHIN DIMENSIONS | | SEE CHART | MATERIAL NO. | | DOCUMENT NO. | SHEET NO. | | |
| | | | | | | 2 OF 2 | | |

2 PORT SMT. JACK ASSY W/FLUSH MOUNT NAILS

MOLEX INCORPORATED

SD-44193-001