

Excellent Integrated System Limited

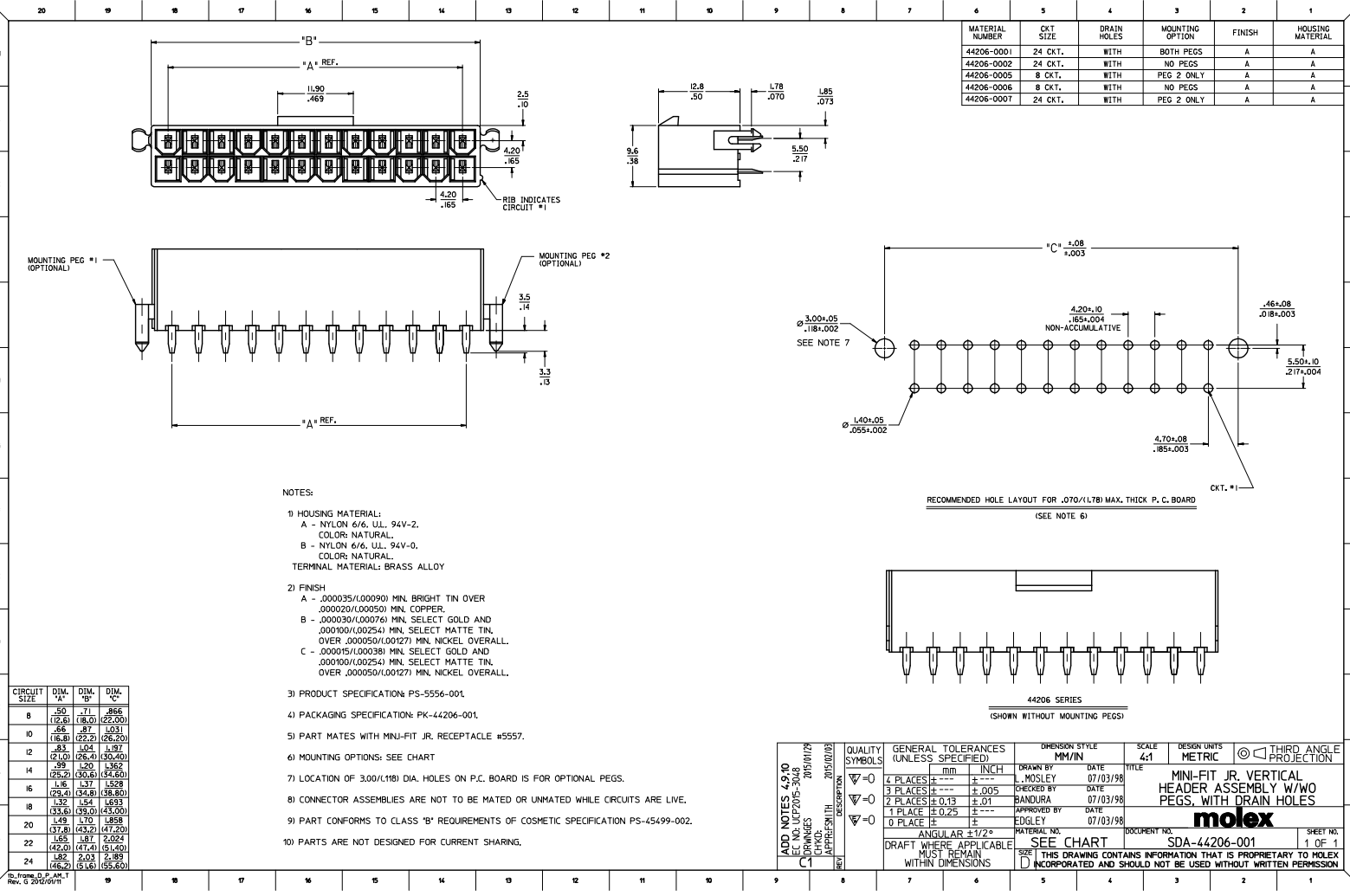
Stocking Distributor

Click to view price, real time Inventory, Delivery & Lifecycle Information:

[Molex Connector Corporation](#)
[0442060005](#)

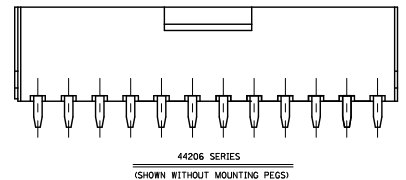
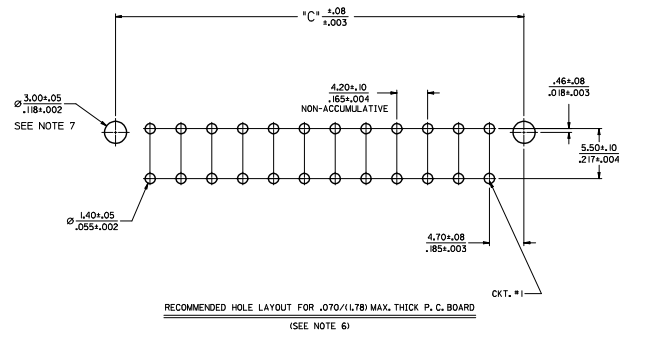
For any questions, you can email us directly:

sales@integrated-circuit.com



MATERIAL NUMBER	CKT SIZE	DRAIN HOLES	MOUNTING OPTION	FINISH	HOUSING MATERIAL
44206-0001	24 CKT.	WITH	BOTH PEGS	A	A
44206-0002	24 CKT.	WITH	NO PEGS	A	A
44206-0005	8 CKT.	WITH	PEG 2 ONLY	A	A
44206-0006	8 CKT.	WITH	NO PEGS	A	A
44206-0007	24 CKT.	WITH	PEG 2 ONLY	A	A

- NOTES:**
- HOUSING MATERIAL:
 - A - NYLON 6/6, U.L., 94V-2, COLOR: NATURAL.
 - B - NYLON 6/6, U.L., 94V-0, COLOR: NATURAL.
 - TERMINAL MATERIAL: BRASS ALLOY
 - FINISH
 - A - .000025/(.00090) MIN. BRIGHT TIN OVER .000020/(.00050) MIN. COPPER
 - B - .000030/(.00076) MIN. SELECT GOLD AND .000100/(.00254) MIN. SELECT MATTE TIN, OVER .000050/(.00127) MIN. NICKEL OVERALL.
 - C - .000015/(.00038) MIN. SELECT GOLD AND .000100/(.00254) MIN. SELECT MATTE TIN, OVER .000050/(.00127) MIN. NICKEL OVERALL.
 - PRODUCT SPECIFICATION: PS-5556-001
 - PACKAGING SPECIFICATION: PK-44206-001
 - PART MATES WITH MINI-FIT JR. RECEPTACLE #5557.
 - MOUNTING OPTIONS: SEE CHART
 - LOCATION OF 3.00/(.118) DIA. HOLES ON P.C. BOARD IS FOR OPTIONAL PEGS.
 - CONNECTOR ASSEMBLIES ARE NOT TO BE MATED OR UNMATED WHILE CIRCUITS ARE LIVE.
 - PART CONFORMS TO CLASS "B" REQUIREMENTS OF COSMETIC SPECIFICATION PS-45499-002.
 - PARTS ARE NOT DESIGNED FOR CURRENT SHARING.



CIRCUIT SIZE	DIM. "A"	DIM. "B"	DIM. "C"
8	.50	.71	.866
10	.66	.87	1.031
12	.83	1.04	1.197
14	.99	1.20	1.362
16	1.16	1.37	1.528
18	1.32	1.54	1.693
20	1.49	1.70	1.858
22	1.65	1.87	2.024
24	1.82	2.03	2.189

QUALITY SYMBOLS	GENERAL TOLERANCES (UNLESS SPECIFIED)		DIMENSION STYLE		SCALE	DESIGN UNITS	THIRD ANGLE PROJECTION
	mm	INCH	MM/IN	DATE			
∇=0	4 PLACES	±.005	±.005	L. MOSLEY	07/03/98		
∇=0	3 PLACES	±.005	±.005	CHECKED BY	DATE		
∇=0	2 PLACES	±0.13	±.01	BANDURA	07/03/98		
∇=0	1 PLACE	±0.25	±.01	APPROVED BY	DATE		
∇=0	0 PLACE	±	±	EDGLEY	07/03/98		

ADD NOTES 7, 9, 10
EC NO. LCP205-3048
DRAWINGS: 205/01/79
CHKD: 205/02/02
APPROVED: 205/02/02

GENERAL TOLERANCES (UNLESS SPECIFIED):
ANGULAR ±1/2°
DRAFT WHERE APPLICABLE
MUST REMAIN WITHIN DIMENSIONS

QUALITY SYMBOLS: ∇=0

GENERAL TOLERANCES (UNLESS SPECIFIED):
mm INCH
4 PLACES ±.005 ±.005
3 PLACES ±.005 ±.005
2 PLACES ±0.13 ±.01
1 PLACE ±0.25 ±.01
0 PLACE ± ±

DIMENSION STYLE: MM/IN

SCALE: 4:1

DESIGN UNITS: METRIC

THIRD ANGLE PROJECTION

DRAWN BY: L. MOSLEY
CHECKED BY: BANDURA
APPROVED BY: EDGLEY
DATE: 07/03/98

MATERIAL NO. SEE CHART

DOCUMENT NO. SDA-44206-001

SHEET NO. 1 OF 1

THIS DRAWING CONTAINS INFORMATION THAT IS PROPRIETARY TO MOLEX AND SHOULD NOT BE USED WITHOUT WRITTEN PERMISSION