

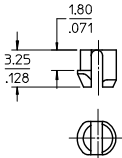
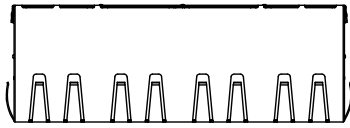
## Excellent Integrated System Limited

Stocking Distributor

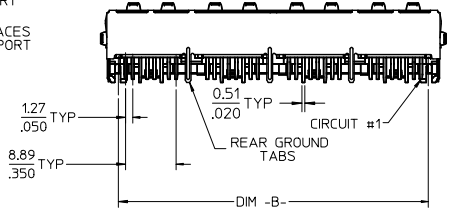
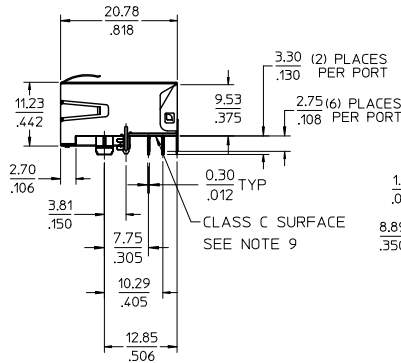
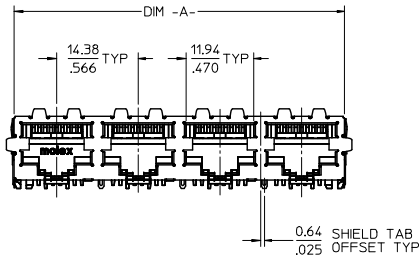
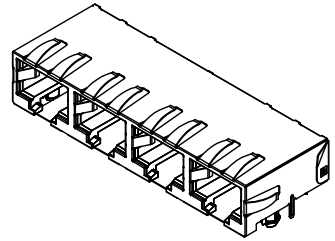
Click to view price, real time Inventory, Delivery & Lifecycle Information:

[Molex Connector Corporation](#)  
[0445605012](#)

For any questions, you can email us directly:  
[sales@integrated-circuit.com](mailto:sales@integrated-circuit.com)



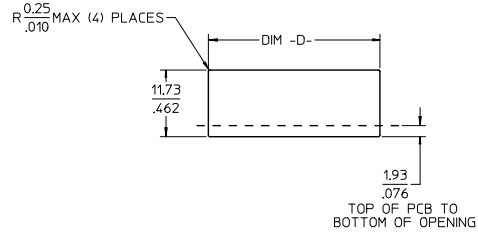
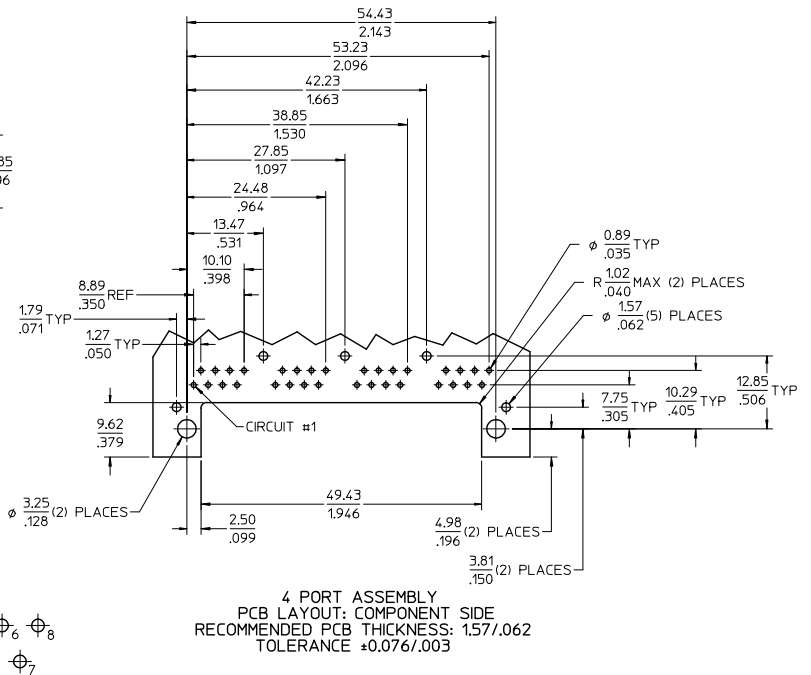
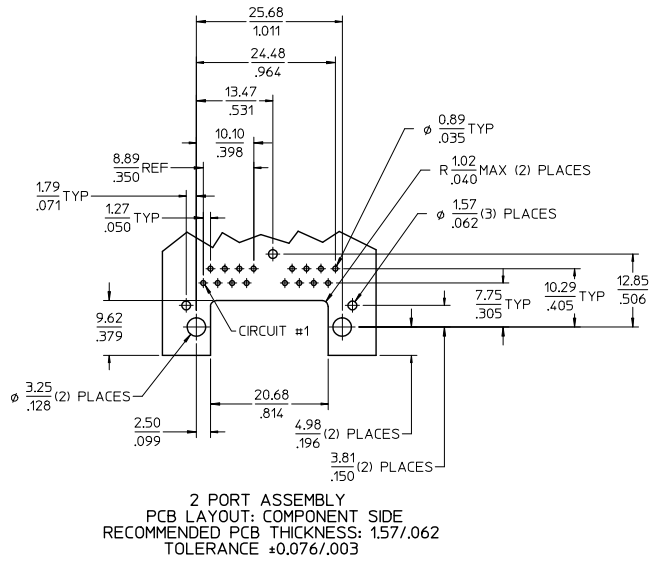
PEG DETAIL  
SCALE 4:1



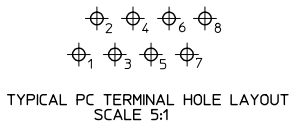
- NOTES:
- MATERIAL:  
HOUSING: NYLON(PIA), GLASS FILLED, UL94V-0, COLOR: BLACK  
TERMINALS: PHOSPHOR BRONZE  
SHIELD: BRASS, 0.181/007 THICK
  - FINISH:  
TERMINALS:  
SELECT GOLD IN CONTACT AREA: 1.27 MICROMETERS / 50 MICROINCHES MIN.  
SELECT MATTE TIN IN PC TAIL AREA: 2.54 MICROMETERS / 100 MICROINCHES MIN.  
WITH OVERALL NICKEL UNDERPLATE: 1.27 MICROMETERS / 50 MICROINCHES MIN.  
SHIELD:  
2.54 MICROMETERS / 100 MICROINCHES NICKEL OVER 1.27 MICROMETERS / 50 MICROINCHES COPPER UNDERPLATE, PCB GROUND TABS DIPPED IN TIN.
  - PRODUCT SPECIFICATION AND PROCESSING PARAMETERS: PS-44560-003.
  - PACKAGING SPECIFICATION:  
2 PORT: CONNECTOR PACKAGED IN TRAYS PER MOLEX PACKAGING SPECIFICATION PK-44560-004  
4 PORT: CONNECTOR PACKAGED IN TRAYS PER MOLEX PACKAGING SPECIFICATION PK-44560-005
  - CONFORMS TO FCC REGULATION PART 68.5 FOR MODULAR JACKS.
  - SEE SHEET (2) OF (2) FOR RECOMMENDED PANEL OPENING AND PCB LAYOUT.
  - TERMINAL LENGTHS MAY BE DIFFERENT FROM TERMINAL TO TERMINAL.
  - THE PRIMARY SHIPPING CARTON WILL BE LABELED "COMPLIANT TO RoHS DIRECTIVE 2002/95/EC AND ELV ANNEX II OF DIRECTIVE 2000/53/EC". ASSEMBLIES WILL BE COMPLIANT TO THE RoHS AND ELV (LEAD-FREE) DIRECTIVES.
  - THIS PART CONFORMS TO CLASS B REQUIREMENTS OF COSMETIC SPECIFICATION PS-43499-002 WITH THE EXCEPTION OF THE SURFACE INDICATED WHICH IS A CLASS C SURFACE.

ASSEMBLY MATERIAL NUMBER	NUMBER OF REAR GROUND TABS	NUMBER OF PORTS	DIM -A-	DIM -B-
445605012	1	2	29.44/1.159	25.68/1.011

REMOVE 5014 EC NO: UCP2009-2791 2009/07/06 DRAWN: JELL CHKD: KIPER APPROV: SMITH 2009/07/22 2009/07/23	QUALITY SYMBOLS ▽=0 ▽=0	GENERAL TOLERANCES (UNLESS SPECIFIED)		DIMENSION STYLE		SCALE	DESIGN UNITS	THIRD ANGLE PROJECTION	
		mm	INCH	MM/IN	DATE	2:1	INCH	COMPACT GANGED CATEGORY 5E MODJACK (LEAD-FREE)	
B1	DESCRIPTION	4 PLACES ± --- ± ---	DRAWN BY	LSCHMIDT	DATE	2005/02/02	MOLEX INCORPORATED		
		3 PLACES ± --- ± .012	CHECKED BY	LSCHMIDT	DATE	2005/02/02			
REV	DESCRIPTION	2 PLACES ± 0.30 ± ---	APPROVED BY	FSMITH	DATE	2005/02/02	SD-44560-002		
		1 PLACE ± --- ± ---	MATERIAL NO.	SEE CHART	DOCUMENT NO.	SHEET NO.			
		ANGULAR ± 1/2°	DRAFT WHERE APPLICABLE MUST REMAIN WITHIN DIMENSIONS		SIZE C		THIS DRAWING CONTAINS INFORMATION THAT IS PROPRIETARY TO MOLEX INCORPORATED AND SHOULD NOT BE USED WITHOUT WRITTEN PERMISSION		



NUMBER OF PORTS	DIM -D-
2	30.20/1.189
4	58.95/2.321



EC NO.: UCP2009-2791 DRAWN BY: J.BELL CHKD BY: J.PETER APPROVED BY: J.SMITH	QUALITY SYMBOLS ▽=0 ▽=0	GENERAL TOLERANCES (UNLESS SPECIFIED)		DIMENSION STYLE		SCALE	DESIGN UNITS	THIRD ANGLE PROJECTION	
		mm	INCH	MM/IN	DATE	2:1	INCH		
REV: B1	DESCRIPTION	4 PLACES	±---	±---	DRAWN BY: LSCHMIDT	DATE: 2005/02/02	TITLE: COMPACT GANGED CATEGORY 5E MODJACK (LEAD-FREE)		
		3 PLACES	±---	±.012	CHECKED BY: LSCHMIDT	DATE: 2005/02/02			
		2 PLACES	±0.30	±---	APPROVED BY: F.SMITH	DATE: 2005/02/02	MOLEX INCORPORATED		
		1 PLACE	±---	±---	MATERIAL NO. N/A	DOCUMENT NO. SD-44560-002			
DRAFT WHERE APPLICABLE MUST REMAIN WITHIN DIMENSIONS		ANGULAR ±1/2°		SIZE C		THIS DRAWING CONTAINS INFORMATION THAT IS PROPRIETARY TO MOLEX INCORPORATED AND SHOULD NOT BE USED WITHOUT WRITTEN PERMISSION			