

## Excellent Integrated System Limited

Stocking Distributor

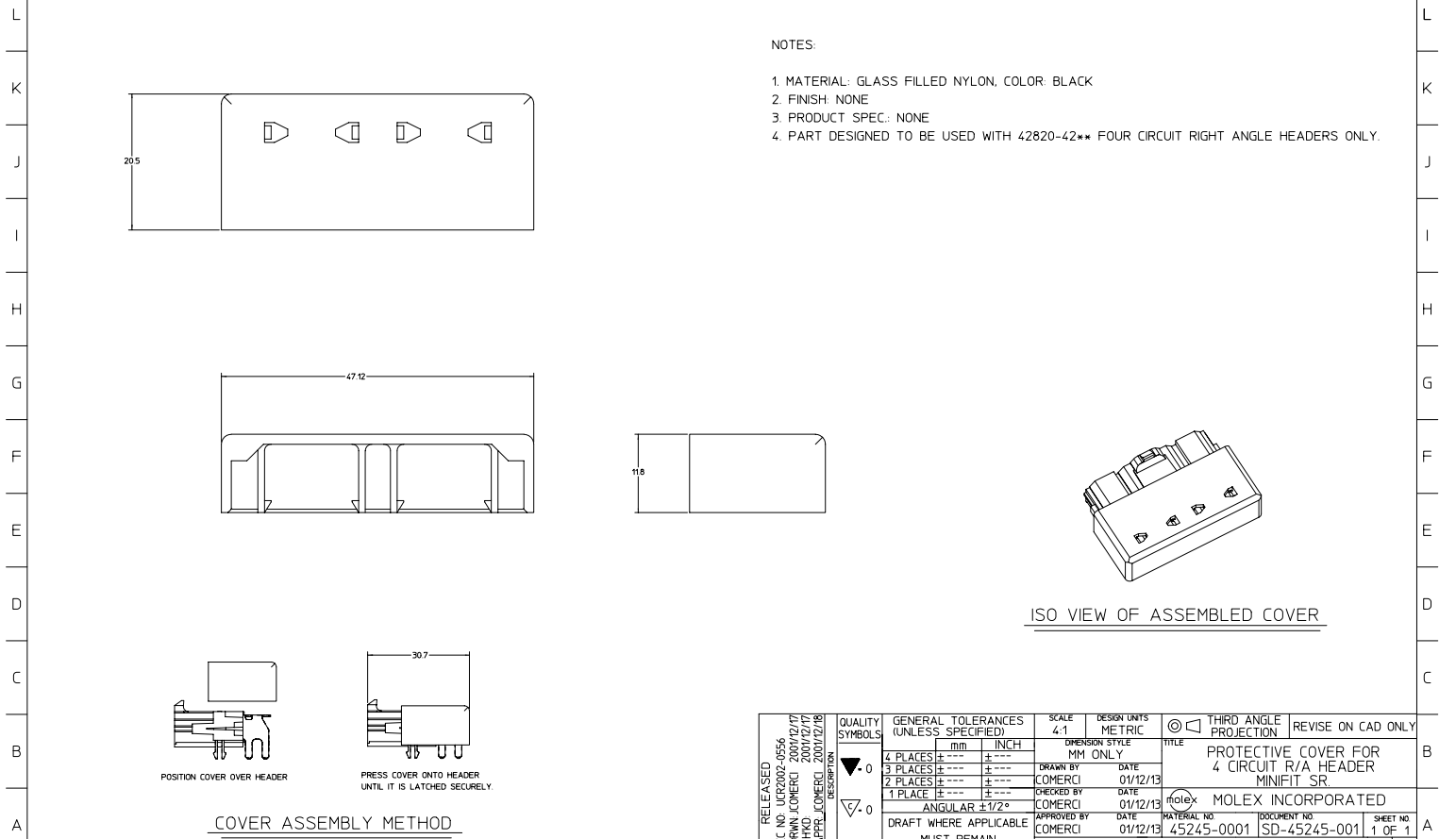
Click to view price, real time Inventory, Delivery & Lifecycle Information:

[Molex Connector Corporation](#)  
[0452450001](#)

For any questions, you can email us directly:

[sales@integrated-circuit.com](mailto:sales@integrated-circuit.com)

20 19 18 17 16 15 14 13 12 11 45245 9 8 7 6 5 4 3 2 1



ISO VIEW OF ASSEMBLED COVER

POSITION COVER OVER HEADER

PRESS COVER ONTO HEADER UNTIL IT IS LATCHED SECURELY.

COVER ASSEMBLY METHOD

RELEASED REC NO. UCR2002-0556 DRAWN BY COMERC 2009/12/17 CHECKED BY COMERC 2009/12/18 APPROVED BY COMERC 2009/12/18 DESCRIPTION A1	QUALITY SYMBOLS	GENERAL TOLERANCES (UNLESS SPECIFIED)	SCALE 4:1	DESIGN UNITS METRIC	THIRD ANGLE PROJECTION	REVISE ON CAD ONLY	
	4 PLACES ±.005 3 PLACES ±.005 2 PLACES ±.005 1 PLACE ±.005	DIMENSION STYLE MM ONLY	DRAWN BY DATE COMERC 01/12/13 CHECKED BY DATE COMERC 01/12/13 APPROVED BY DATE COMERC 01/12/13	TITLE PROTECTIVE COVER FOR 4 CIRCUIT R/A HEADER MINIFIT SR.			
	ANGULAR ±1/2° DRAFT WHERE APPLICABLE MUST REMAIN WITHIN DIMENSIONS	MATERIAL NO. 45245-0001 DOCUMENT NO. SD-45245-001 SHEET NO. 1 OF 1		MOLEX INCORPORATED			
	THIS DRAWING CONTAINS INFORMATION THAT IS PROPRIETARY TO MOLEX INCORPORATED AND SHOULD NOT BE USED WITHOUT WRITTEN PERMISSION						

19 18 17 16 15 14 13 12 11 10 9 8 7 6 5 4 3 2 1