

Excellent Integrated System Limited

Stocking Distributor

Click to view price, real time Inventory, Delivery & Lifecycle Information:

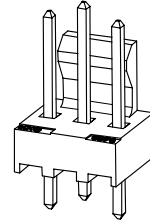
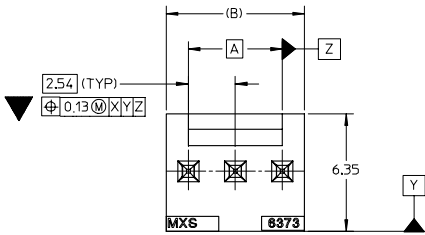
[Molex Connector Corporation](#)
[0456610003](#)

For any questions, you can email us directly:

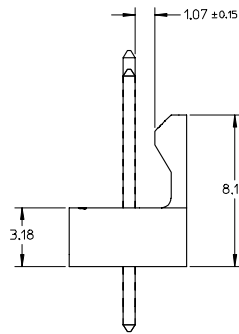
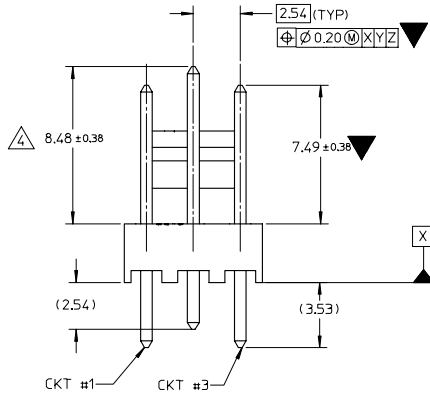
sales@integrated-circuit.com

10 9 8 7 6 5 4 3 2 1

ASSEMBLY	CKT	CKT # WITH LONGER PINS \triangle	QUANTITY PER BAG	DIM. A	DIM. B
45661-0003	3	2	500	5.08	7.47
45661-0006	6	1, 6	300	12.70	15.09



3CKT ASSEMBLY



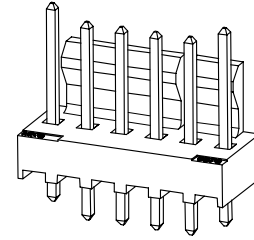
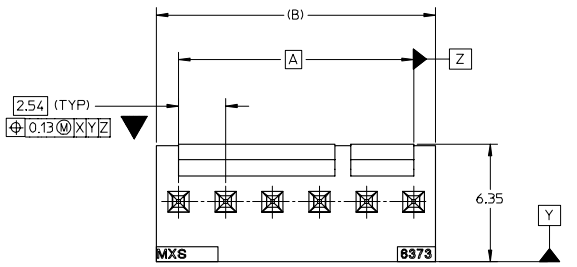
NOTES:

- MATERIAL: NYLON, UL 94V-0, COLOR: WHITE
 - FINISH: 5,00 μ m MIN. TIN OVER 1,25 μ m MIN. NICKEL UNDERPLATE OVERALL.
 - PRODUCT SPECIFICATION: PS-10-07
- \triangle REFER TO TABLE FOR FIRST MATE LAST BREAK PINS POSITION.

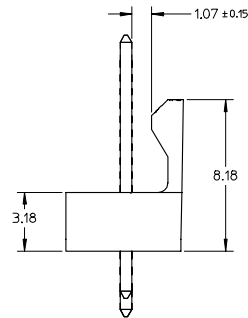
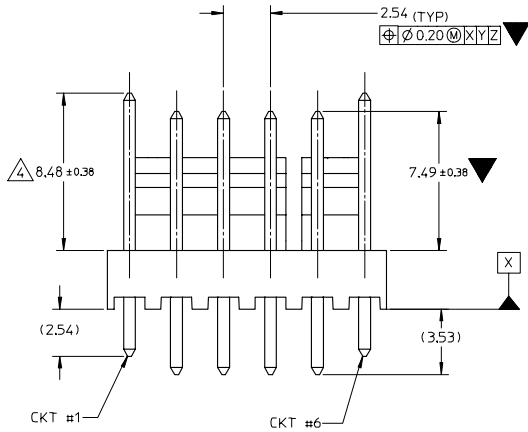
EC NO: S2006-0696 2006/10/30 DRINSKI IM1 2006/01/03 CHKDBK/KK 2006/07/03 APPR:PALEY	DESCRIPTION KK 100 HDR FRLK WITH MULTIPLY MATING	QUALITY SYMBOLS	GENERAL TOLERANCES (UNLESS SPECIFIED)		DIMENSION STYLE MM ONLY		SCALE NTS	DESIGN UNITS METRIC	THIRD ANGLE PROJECTION	
		$\nabla=3$	4 PLACES	± ---	± ---	DRAWN BY KSAMIEC	DATE 2003/10/06	MOLEX INCORPORATED SD-45661-003 SHEET NO. 1 OF 2		
		$\nabla=0$	3 PLACES	± ---	± ---	CHECKED BY MARGUL IS	DATE 2003/10/06			
			2 PLACES	± 0.25	± ---	APPROVED BY MARGUL IS	DATE 2003/10/06			
	1 PLACE	± 0.38	± ---	MATERIAL NO. SEE TABLE	DOCUMENT NO. SD-45661-003					
DRAFT WHERE APPLICABLE MUST REMAIN WITHIN DIMENSIONS		ANGULAR ± 3 °		SIZE A3		THIS DRAWING CONTAINS INFORMATION THAT IS PROPRIETARY TO MOLEX INCORPORATED AND SHOULD NOT BE USED WITHOUT WRITTEN PERMISSION				

9 8 7 6 5 4 3 2 1

10 9 8 7 6 5 4 3 2 1



6CKT ASSEMBLY



EC NO: S2006-0696 2006/10/20 DRAWN/SKL/001 2006/01/03 CHKD/BKOK 2006/01/03 APPR/PATIEY	QUALITY SYMBOLS ▽=3 ▽=0	GENERAL TOLERANCES (UNLESS SPECIFIED) <table border="1"> <thead> <tr> <th></th> <th>mm</th> <th>INCH</th> </tr> </thead> <tbody> <tr> <td>4 PLACES</td> <td>±---</td> <td>±---</td> </tr> <tr> <td>3 PLACES</td> <td>±---</td> <td>±---</td> </tr> <tr> <td>2 PLACES</td> <td>±0.25</td> <td>±---</td> </tr> <tr> <td>1 PLACE</td> <td>±0.38</td> <td>±---</td> </tr> </tbody> </table>		mm	INCH	4 PLACES	±---	±---	3 PLACES	±---	±---	2 PLACES	±0.25	±---	1 PLACE	±0.38	±---	DIMENSION STYLE MM ONLY	SCALE NTS	DESIGN UNITS METRIC	THIRD ANGLE PROJECTION
		mm	INCH																		
	4 PLACES	±---	±---																		
	3 PLACES	±---	±---																		
2 PLACES	±0.25	±---																			
1 PLACE	±0.38	±---																			
DESCRIPTION KK 100 HEADER FRLK WITH MULTIPLY MATING	DRAWN BY KSAMIEC	DATE 2003/10/06	CHECKED BY MARGUL IS	DATE 2003/10/06	MOLEX INCORPORATED																
MATERIAL NO. SEE TABLE	DOCUMENT NO. SD-45661-003	THIS DRAWING CONTAINS INFORMATION THAT IS PROPRIETARY TO MOLEX INCORPORATED AND SHOULD NOT BE USED WITHOUT WRITTEN PERMISSION																			
REV A2	DRAFT WHERE APPLICABLE MUST REMAIN WITHIN DIMENSIONS	SIZE A3	SHEET NO. 2 OF 2																		

9 8 7 6 5 4 3 2 1