



Distributor of Molex Connector Corporation: Excellent Integrated System Limited
Datasheet of 0497489001 - Connector Quick Connect Receptacle 19-25.5 AWG 0.110"
(2.79mm) Crimp

Contact us: sales@integrated-circuit.com Website: www.integrated-circuit.com

Excellent Integrated System Limited

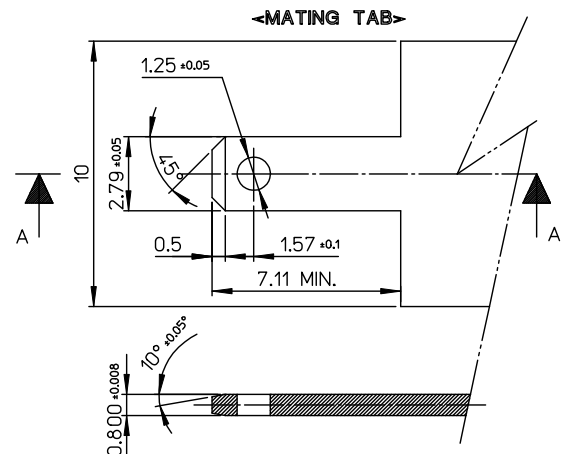
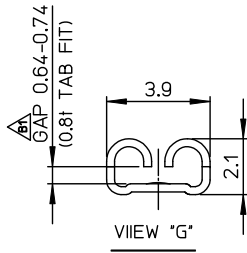
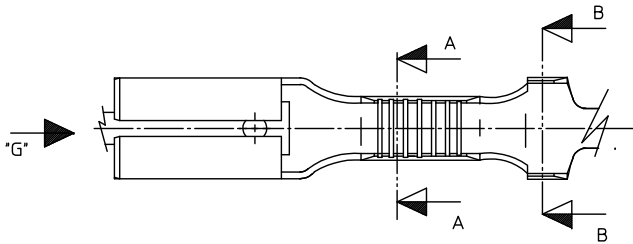
Stocking Distributor

Click to view price, real time Inventory, Delivery & Lifecycle Information:

[Molex Connector Corporation](#)
[0497489001](#)

For any questions, you can email us directly:
sales@integrated-circuit.com

Contact us: sales@integrated-circuit.com Website: www.integrated-circuit.com

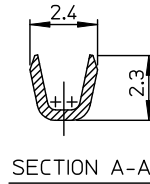
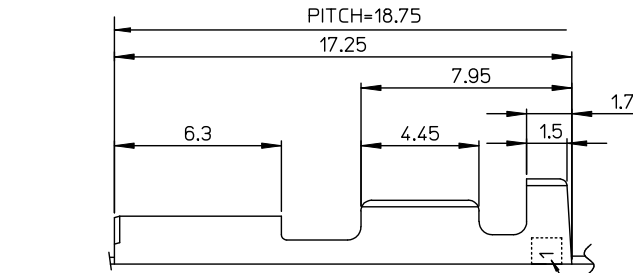


SECTION A-A
 MATERIAL : UNPLATED BRASS(C2600T)
 HARDNESS : 62±7 ROCKWELL 30T SCALE
 (VICKERS HARDNESS : HV104-148)

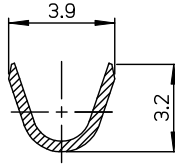
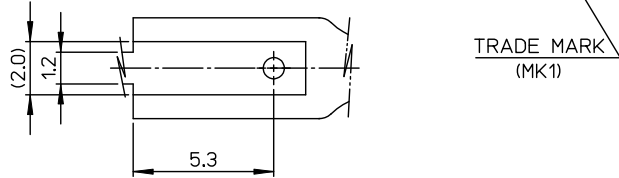
NOTES:

1. MATERIALS: PHOSPHOR BRONZE, 1/2 HARD, 0.3mm THICKNESS
2. FINISHES: POST TIN PLATED
(1.0 μm MIN. TIN OVER 0.3 μm MIN. COPPER)
3. PRODUCT SPECIFICATION: PS-49748-001
4. PACKAGING SPECIFICATION: PK-49748-001
5. APPLICABLE MAGNET WIRE RANGE : AWG #25.5 - #19(280 - 1300 CMA)
6. INSULATION WIRE RANGE : TFS-19 ~ 21 TEFLON TUBING
PER THE FOLLING CS-49748-001
7. TEST TAB INSERTION & WITHDRAWAL FORCE
(MEASURED BY PUSH-PULL GAUGE : USED 0.81 UNPLATED TAB)

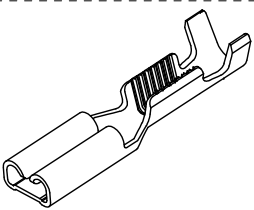
INSERTION FORCE(Kgf)		WITHDRAWAL FORCE(Kgf)		FINISH
INITIAL	MAX.	INITIAL	MIN.	
	5.5kgf MAX.		2.5kgf MIN.	TIN PLATED



SECTION A-A



SECTION B-B



REV	DESCRIPTION
B1	

REVISOR	EC. NO. KOR2014-0002	2013/07/09
DRAWN	SKCHO	2013/07/09
CHECKED	SKCHO	2013/07/09
APPROVED	YSKIM02	2013/07/17

QUALITY SYMBOLS	
▽=0	
▽=0	

GENERAL TOLERANCES (UNLESS SPECIFIED)	
4 PLACES	± 0.15
3 PLACES	± 0.20
2 PLACES	± 0.30
1 PLACE	± 0.40
0 PLACE	± 0.50
ANGULAR ± 1°	
DRAFT WHERE APPLICABLE MUST REMAIN WITHIN DIMENSIONS	

DIMENSION STYLE		SCALE	DESIGN UNITS	THIRD ANGLE PROJECTION
MM ONLY		7/1	METRIC	THIRD ANGLE PROJECTION
DRAWN BY	DATE	TITLE		
JB. JIN	2004/03/16	.110 REC TERMINAL (MAGNET WIRE)		
CHECKED BY	DATE	molex		
WY. YANG	2004/03/16			
APPROVED BY	DATE	MATERIAL NO.	DOCUMENT NO.	SHEET NO.
CW. LEE	2004/03/16	497489001	SD-49748-001	1 OF 1
THIS DRAWING CONTAINS INFORMATION THAT IS PROPRIETARY TO MOLEX INCORPORATED AND SHOULD NOT BE USED WITHOUT WRITTEN PERMISSION				