

## Excellent Integrated System Limited

Stocking Distributor

Click to view price, real time Inventory, Delivery & Lifecycle Information:

[Molex Connector Corporation](#)  
[0513360710](#)

For any questions, you can email us directly:

[sales@integrated-circuit.com](mailto:sales@integrated-circuit.com)

10 9 8 7 6 5 4 3 2 1

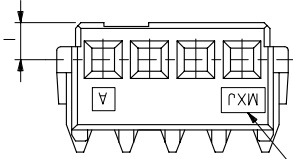
番号 NO.	名称 NAME	原料 MATERIAL	数量 QTY	仕上げ FINISH
①	ハウジング HOUSING	PBT PBT	I	ガラス30% G.F.30% U.L94V-0
②	ターミナル TERMINAL	りん青銅 (+0.2) PHOSPHOR BRONZE(+0.2)	N	全体錫メッキ PRE-TINNED

注) NOTES

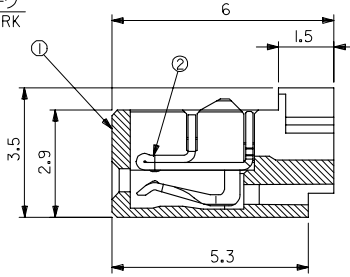
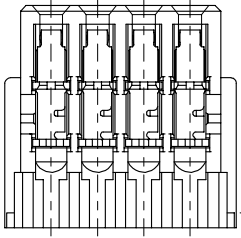
I. 原料および仕上げ: 表参照  
MATERIAL AND FINISH : SEE CHART

△製品番号  
MATERIAL NO.  
51336-\*\*\*I\*

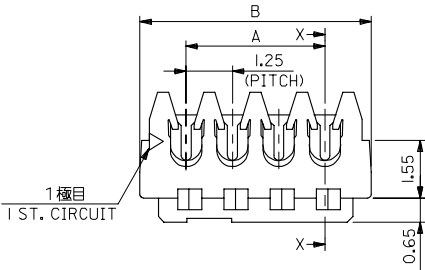
極数 CIRCUIT SIZE(O2 ~ 20)  
色 COLOR IO: 白色 WHITE



トレードマーク  
TRADE MARK



SECTION X-X



1極目  
1 ST. CIRCUIT

26.25	23.75	20	51336-20I*
25	22.5	19	51336-19I*
23.75	21.25	18	51336-18I*
22.5	20	17	51336-17I*
21.25	18.75	16	51336-16I*
20	17.5	15	51336-15I*
18.75	16.25	14	51336-14I*
17.5	15	13	51336-13I*
16.25	13.75	12	51336-12I*
15	12.5	11	51336-11I*
13.75	11.25	10	51336-10I*
12.5	10	9	51336-09I*
11.25	8.75	8	51336-08I*
10	7.5	7	51336-07I*
8.75	6.25	6	51336-06I*
7.5	5	5	51336-05I*
6.25	3.75	4	51336-04I*
5	2.5	3	51336-03I*
3.75	1.25	2	51336-02I*

51336-\*\*\*I\*

B	A	極数 CIRCUIT SIZE	製品番号 MATERIAL NO.	MODEL NO.
---	---	--------------------	----------------------	-----------

材料 MATERIAL	SEE CHART
仕上げ FINISH	SEE CHART
適用電線範囲 WIRE RANGE	AWG #26, #28
被覆外径 INS. RANGE	φ0.8 - φ0.9

RELEASED	2005/11/25
EC NO. J2006-1346	
DRW/M/NABE1	2005/11/28
CHK/KK/TOYODA	
APP/NUKITA	2005/11/30

GENERAL TOLERANCES (UNLESS SPECIFIED)	
10 UNDER	±0.2
10 OVER 30 UNDER	±0.25
30 OVER	±0.3
ANGULAR	±3°
DRAFT WHERE APPLICABLE MUST REMAIN WITHIN DIMENSIONS	

DIMENSION STYLE	
MM ONLY	
DRAWN BY	M.NABE1
DATE	'05/10/24
CHECKED BY	K.TOYODA
DATE	'05/10/24
APPROVED BY	N.UKITA
DATE	'05/10/24
MATERIAL NO.	SEE CHART

SCALE	DESIGN UNITS	THIRD ANGLE PROJECTION
10:1	METRIC	☑
TITLE MINI MI2 REC. ASSY (SN)		
MOLEX INCORPORATED		
DOCUMENT NO.	SD-51336-001	SHEET NO. 1 OF 1
SIZE A3 THIS DRAWING CONTAINS INFORMATION THAT IS PROPRIETARY TO MOLEX INCORPORATED AND SHOULD NOT BE USED WITHOUT WRITTEN PERMISSION		